

LEASE

RETAIL IN BREMERTON

533 4th St Bremerton, WA 98337



OFFERING SUMMARY

Lease Rate:	\$12.00 SF/yr (NNN)
Available SF:	2,700 SF
Lot Size:	0.07 Acres
Year Built:	1920
Zoning:	CITY

PROPERTY OVERVIEW

Please contact the agent for more information about this listing.

PROPERTY HIGHLIGHTS

- Prime 4th St Retail/Office Location
- First Time On The Market In Many Years
- Fully-Customizable Floor Plan Offers Maximum Flexibility

Cameron Wilson, CCIM
702 604 4119
cameron.wilson@cbcworldwide.com

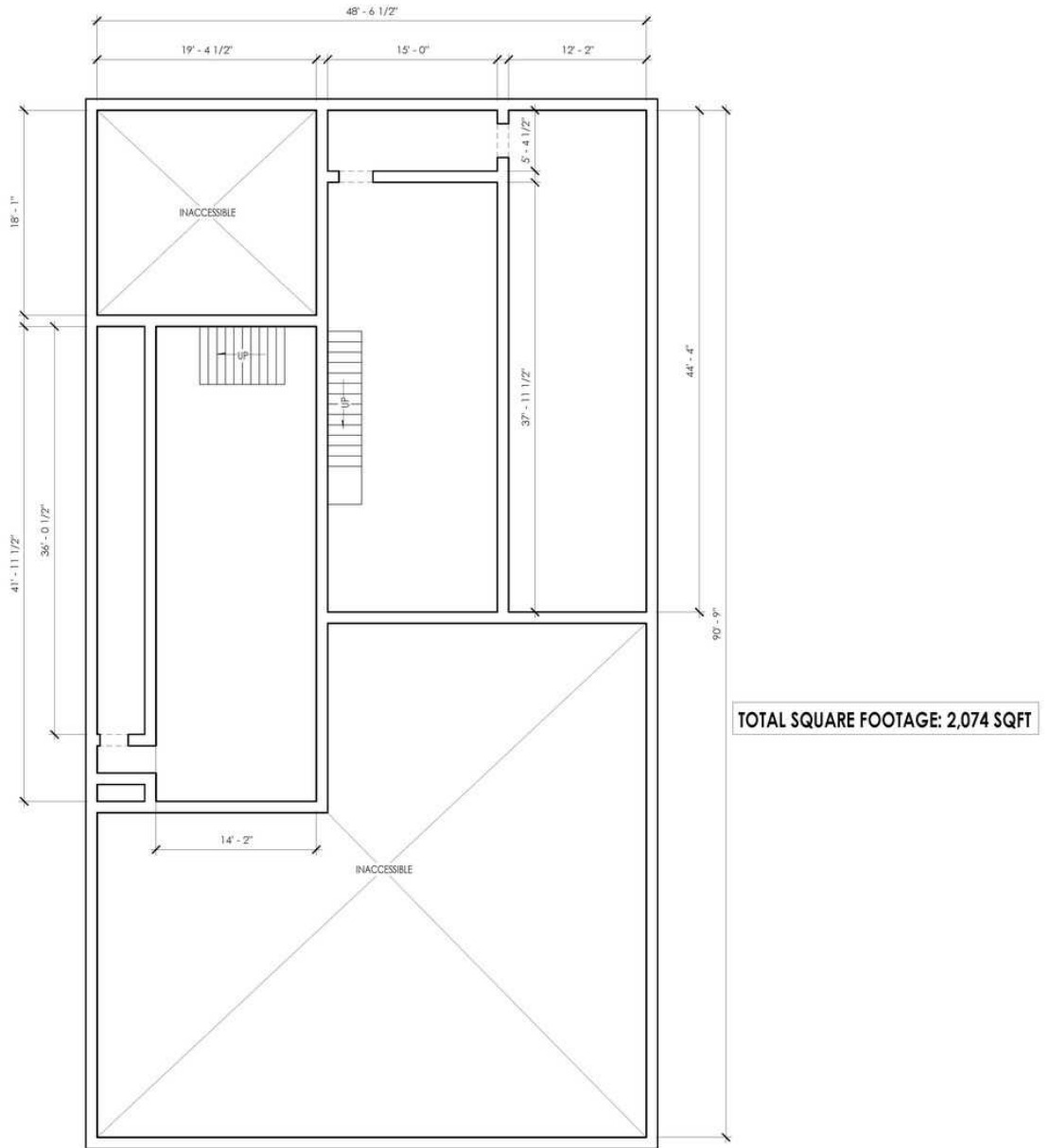


**COLDWELL BANKER
COMMERCIAL**
DANFORTH

LEASE

RETAIL IN BREMERTON

533 4th St Bremerton, WA 98337



① LEVEL 0 - FLOOR PLAN - EXISTING
3/16" = 1'-0"



Cameron Wilson, CCIM
702 604 4119
cameron.wilson@cbcworldwide.com

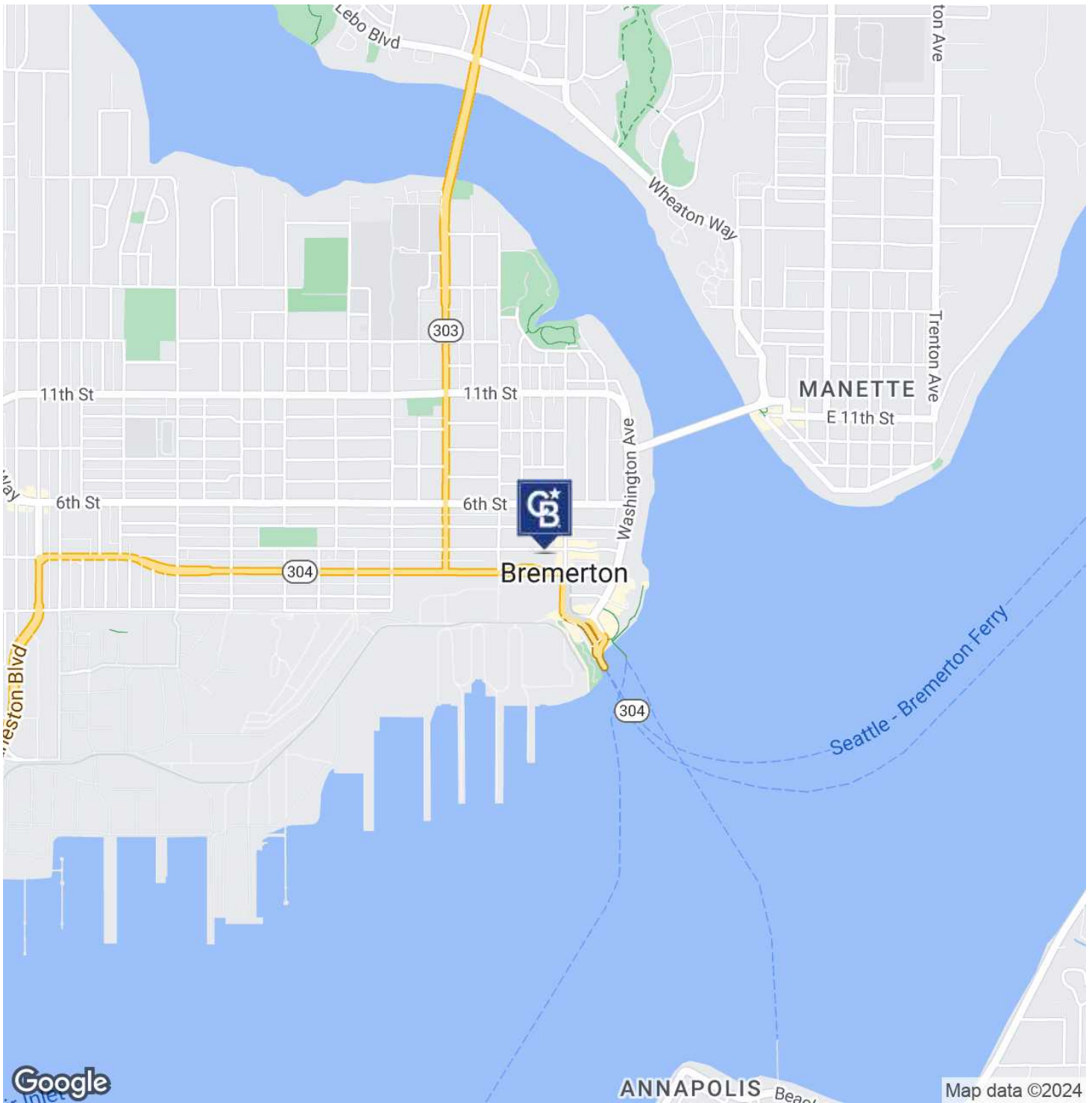


**COLDWELL BANKER
COMMERCIAL**
DANFORTH

LEASE

RETAIL IN BREMERTON

533 4th St Bremerton, WA 98337



Cameron Wilson, CCIM
702 604 4119
cameron.wilson@cbcworldwide.com

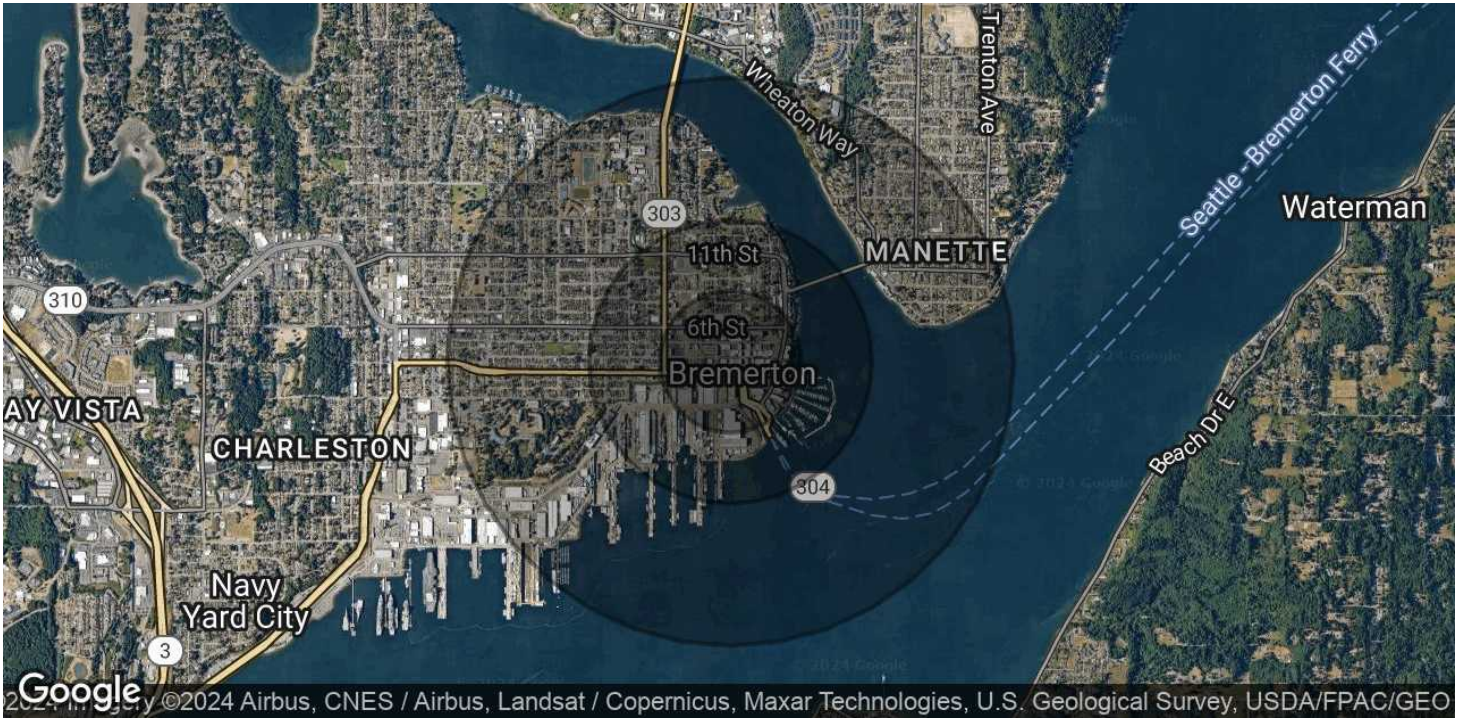


**COLDWELL BANKER
COMMERCIAL**
DANFORTH

LEASE

RETAIL IN BREMERTON

533 4th St Bremerton, WA 98337



POPULATION	0.25 MILES	0.5 MILES	1 MILE
Total Population	632	2,654	11,119
Average Age	34.8	34.2	32.8
Average Age (Male)	32.3	32.3	32.2
Average Age (Female)	39.5	36.7	33.3

HOUSEHOLDS & INCOME	0.25 MILES	0.5 MILES	1 MILE
Total Households	332	1,293	4,839
# of Persons per HH	1.9	2.1	2.3
Average HH Income	\$46,741	\$53,123	\$65,000
Average House Value	\$227,607	\$253,738	\$278,047

* Demographic data derived from 2020 ACS - US Census

Cameron Wilson, CCIM
702 604 4119
cameron.wilson@cbcworldwide.com



**COLDWELL BANKER
COMMERCIAL**
DANFORTH