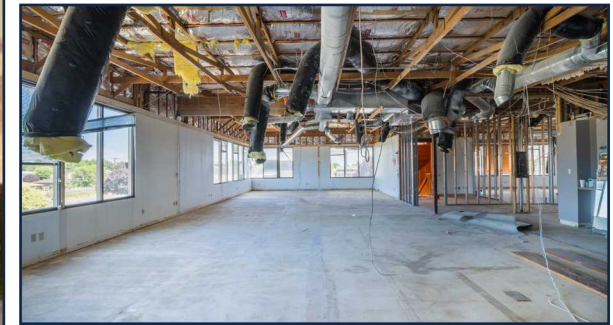


FOR LEASE \$21.00 SF/yr + NNN

MULTI-TENANT OFFICE IN HIGH TRAFFIC AREA!

Under new ownership, this office property is undergoing a significant transformation, with extensive exterior enhancements, upgraded signage, and interior remodeling. The suite sizes range from 4,000 SF to 14,047 SF. The owner is willing to customize layouts and suite improvements to meet your unique tenant requirements. Positioned as an ideal location for a regional office or corporate headquarters, this property offers great potential. **MLS#265837 MLS#265831 MLS #265838**

- Tailorable Space
- 5 year minimum term
- NNN estimated at \$5.50/sf
- 4,000-14,047 sf suite sizes

FOR LEASE **\$21.00 SF/yr + NNN**

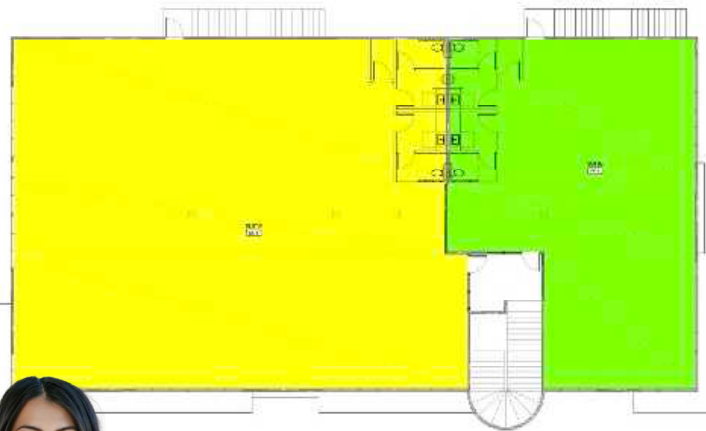
2810 CLEARWATER | Kennewick, WA.



CONCEPTUAL FIRST FLOOR PLAN



CONCEPTUAL SECOND FLOOR PLAN



STRICKER
CRE®



DERRICK STRICKER
DESIGNATED BROKER



derrick@strickercre.com
509.591.9949



JAZMINE MURILLO
COMMERCIAL BROKER

jazmine@strickercre.com
509.591.9949

