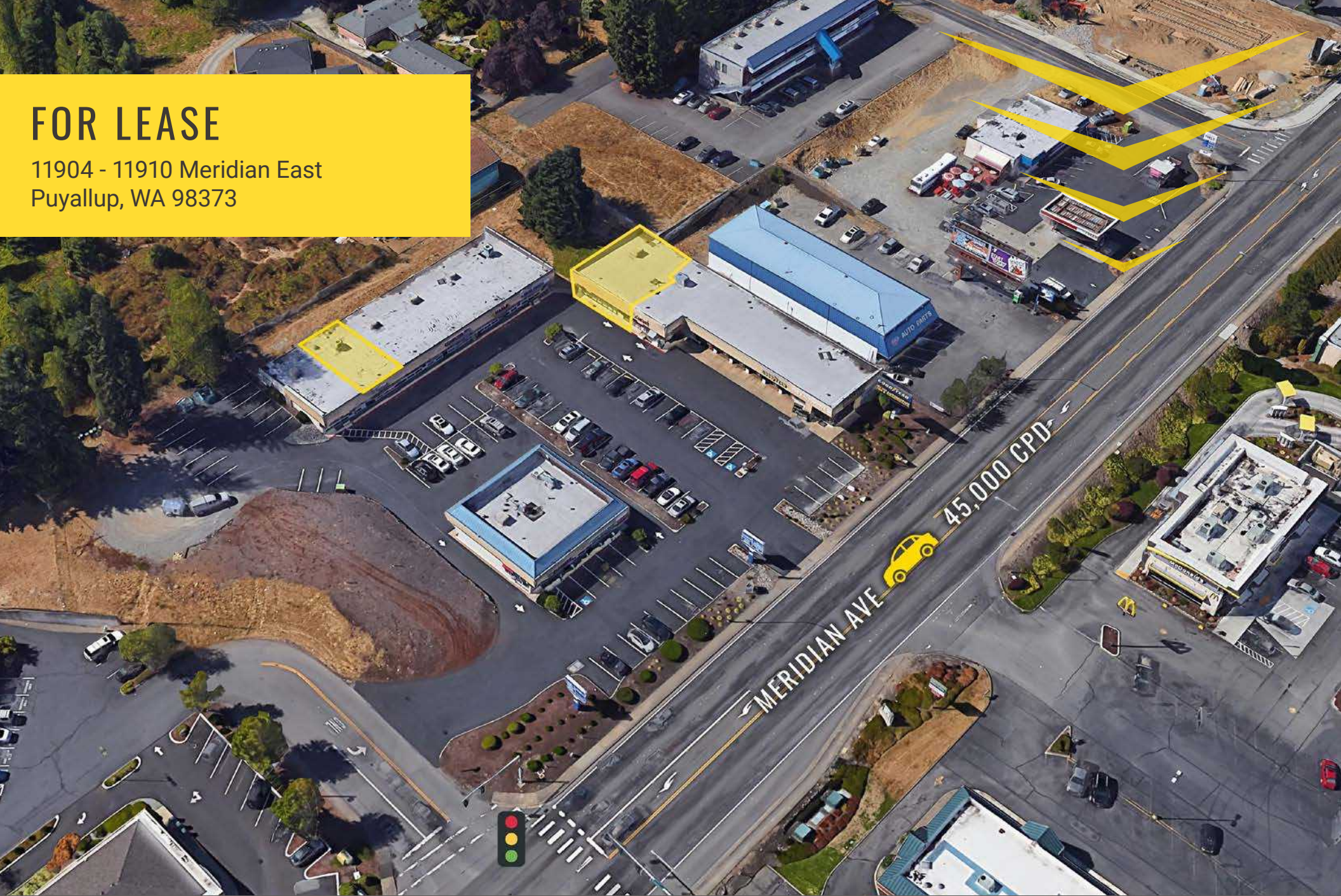


FOR LEASE

11904 - 11910 Meridian East
Puyallup, WA 98373



MERIDIAN SQUARE

Blake Weber | Tim Weber | Don Whittles | Jacob Fors

First Western Properties—Tacoma Inc. | 253.472.0404
6402 Tacoma Mall Blvd, Tacoma, WA 98409 | fwp-inc.com

11904 - 11910 MERIDIAN EAST:

1,443 SF \$24.00 PSF \$9.00 NNN

1,918 SF \$22.00 PSF \$9.00 NNN

- NNN is estimated and subject to change
- Pylon signage available
- Located on South Hill Meridian with high traffic volume
- Close to South Hill Mall, Walgreens, Starbucks, YMCA and other major retailers!



Population



Average HH Income



Daytime Population

Regis - 2024

| | Population | Average HH Income | Daytime Population |
|--------|------------|-------------------|--------------------|
| Mile 1 | 12,978 | \$100,872 | 9,745 |
| Mile 3 | 86,791 | \$137,179 | 47,789 |
| Mile 5 | 186,837 | \$133,242 | 96,502 |

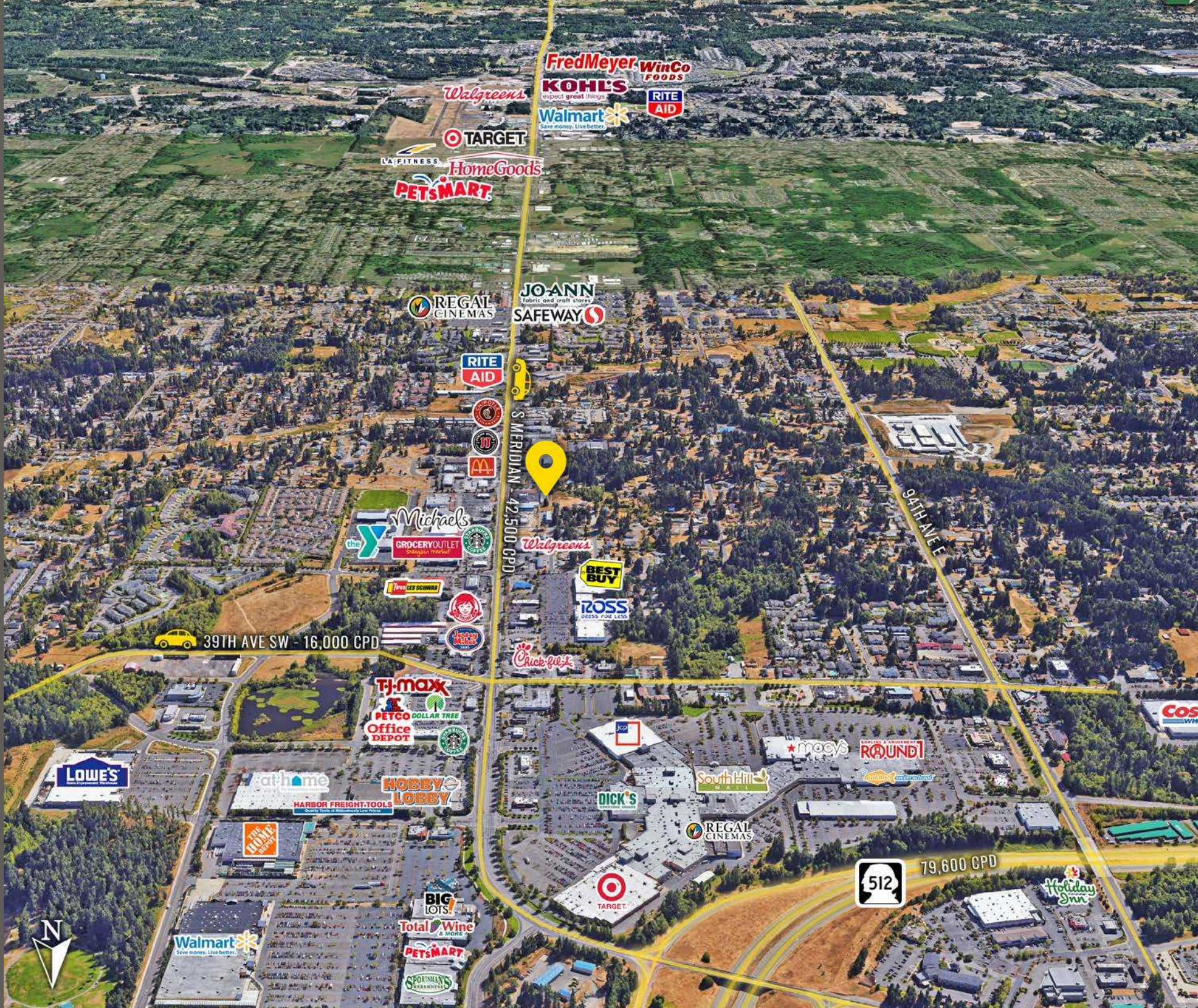
TENANTS



NEARBY TENANTS



LOCATION AERIAL



SITE PLAN





PUYALLUP, WA is just 35 miles south of Seattle situated at the foot of scenic Mount Rainier. Puyallup plays host to the Washington State Fair, where over one million people attend each September. The city has a rich agricultural past but there is much more to Puyallup than meets the eye. The retail shopping centers, dining opportunities and a modern regional medical center are just some of the many amenities appreciated by residents and visitors.

TACOMA | KIRKLAND | PORTLAND | SEATTLE



RELATIONSHIP FOCUSED. RESULTS DRIVEN.

BLAKE WEBER
206.898.1231
bweber@firstwesternproperties.com

JACOB FORS
253.472.0472
jfors@firstwesternproperties.com

TIM WEBER
253.471.5502
tweber@firstwesternproperties.com

DON WHITTLES
253.471.5509
dwhittles@firstwesternproperties.com



First Western Properties—Tacoma Inc. | 253.472.0404
6402 Tacoma Mall Blvd, Tacoma, WA 98409 | fwp-inc.com

© First Western Properties, Inc. DISCLAIMER: The above information has been secured from sources believed to be reliable, however, no representations are made to its accuracy. Prospective tenants or buyers should consult their professional advisors and conduct their own independent investigation. Properties are subject to change in price and/or availability without notice.