

# AUBURN PARK 277



*Industrial Space  
For Lease*

**40,000**  
AVAILABLE SF

**6.8 AC**  
SITE

**30'**  
CLEAR HEIGHT

40,000 SF total with 3,556 SF office

ESFR sprinkler system

11 dock-high doors (6 with EOD levelers)

1 grade level door

Immediate access to SR-167 and quick I-5 access

No city B&O tax

30' clear height

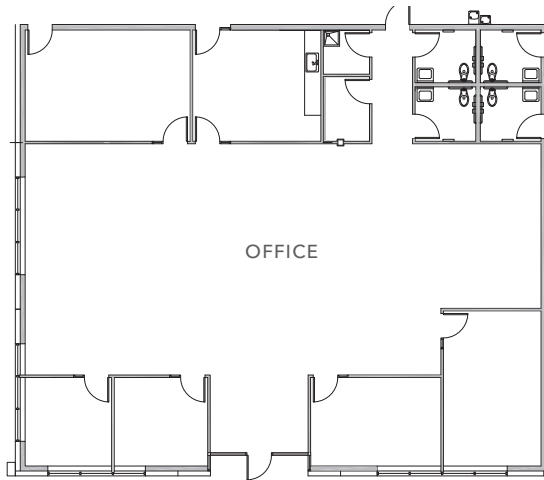
Available July 1, 2024

**DOUG KLEIN, SIOR**  
206.248.7348  
doug.klein@kidder.com

**TRAVIS STANAWAY**  
206.248.6526  
travis.stanaway@kidder.com

**KIDDER.COM**

This information supplied herein is from sources we deem reliable. It is provided without any representation, warranty, or guarantee, expressed or implied as to its accuracy. Prospective Buyer or Tenant should conduct an independent investigation and verification of all matters deemed to be material, including, but not limited to, statements of income and expenses. Consult your attorney, accountant, or other professional advisor.



40,000 SF

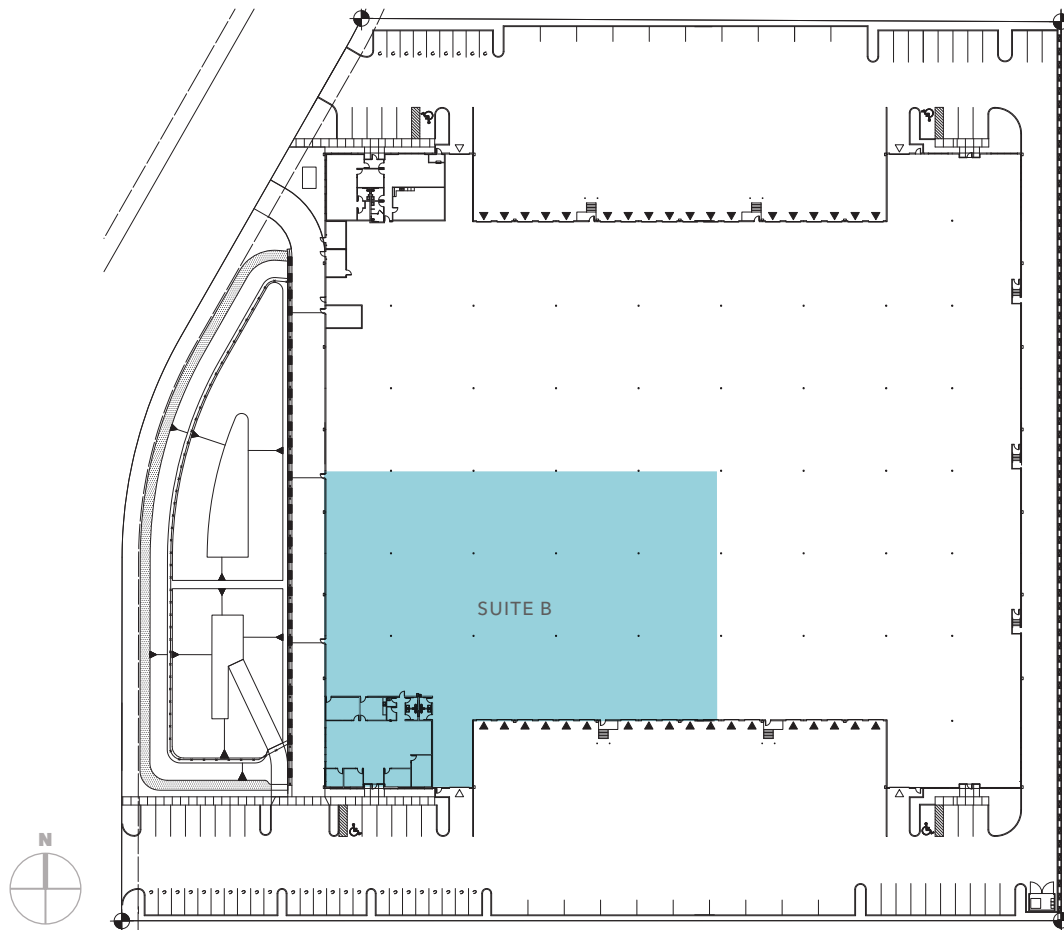
TOTAL AREA

3,556 SF

OFFICE AREA

7/1/2024

AVAILABLE

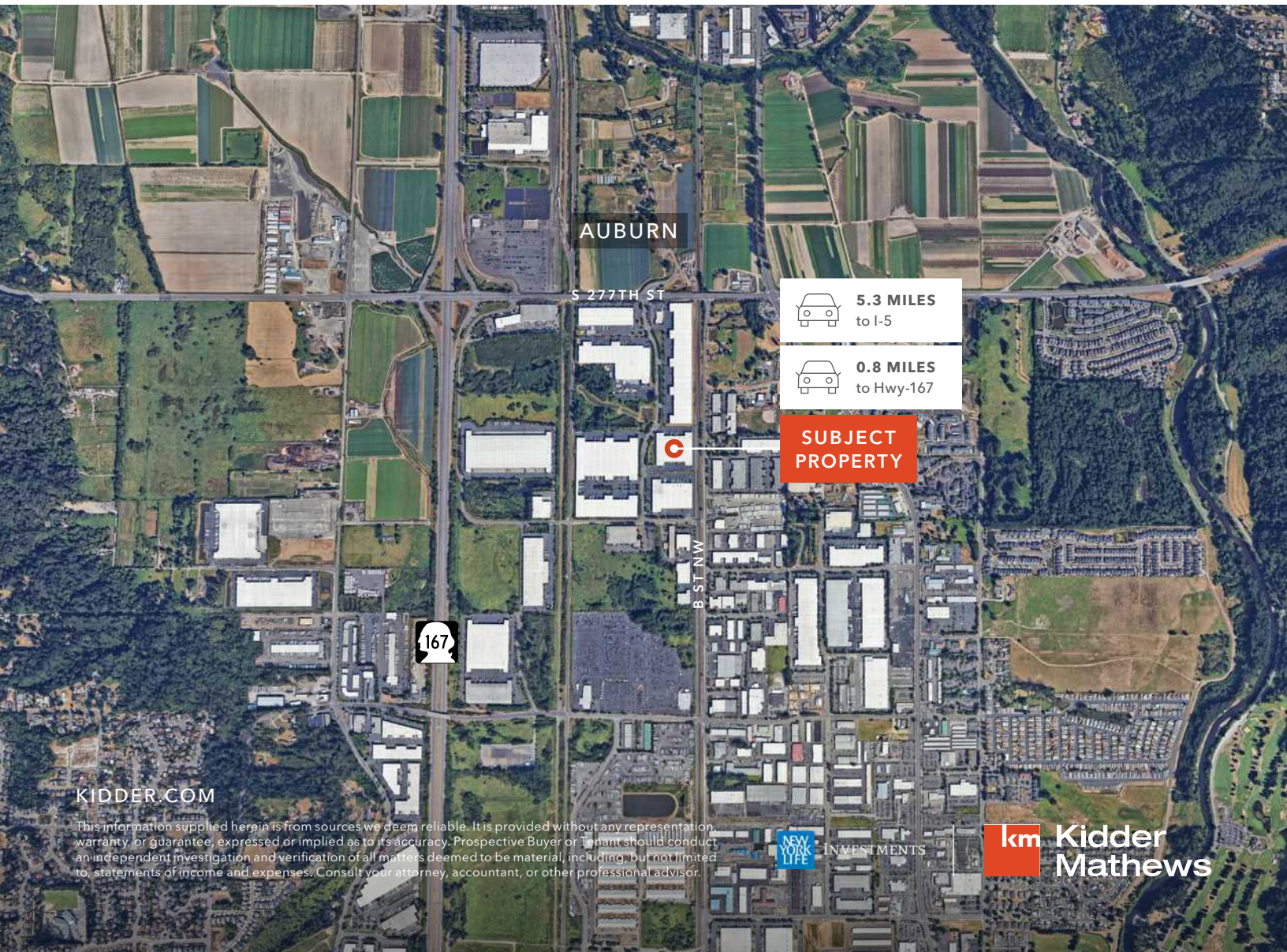
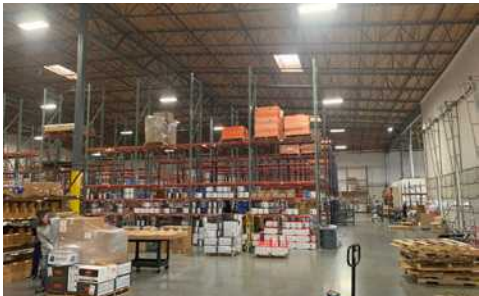


KIDDER.COM

This information supplied herein is from sources we deem reliable. It is provided without any representation, warranty, or guarantee, expressed or implied as to its accuracy. Prospective Buyer or Tenant should conduct an independent investigation and verification of all matters deemed to be material, including, but not limited to, statements of income and expenses. Consult your attorney, accountant, or other professional advisor.







KIDDER.COM

This information supplied herein is from sources we deem reliable. It is provided without any representation, warranty, or guarantee, expressed or implied as to its accuracy. Prospective Buyer or Tenant should conduct an independent investigation and verification of all matters deemed to be material, including, but not limited to, statements of income and expenses. Consult your attorney, accountant, or other professional advisor.

