

For Lease

9,130 SF stand-alone office building with 36 on-site parking stalls

Evergreen Building

2265 First Avenue S, Seattle, WA 98134

Building Highlights

- Premier, close-in Seattle location
- Minutes away from I-90, I-5 and Hwy 99
- Easy access to the Downtown Seattle Transit Tunnel
- Adjacent to Starbucks Headquarters
- Exciting new neighborhood developments include Urban Visions' plans and permits for 1 million RSF in five new Class A buildings
- Transportation 50-yard line - Amtrak station two blocks away
- Corporate neighbors include Starbucks, Attachmate, Intel, Avvo, Getty Images, Oculus, Groupon, King5, and the Port of Seattle, and more.

David Gurry

Senior Vice President
+1 206 931 6474
david.gurry@colliers.com

Dan Dahl

Senior Vice President
+1 206 650 6154
dan.dahl@colliers.com

Asking Rent:

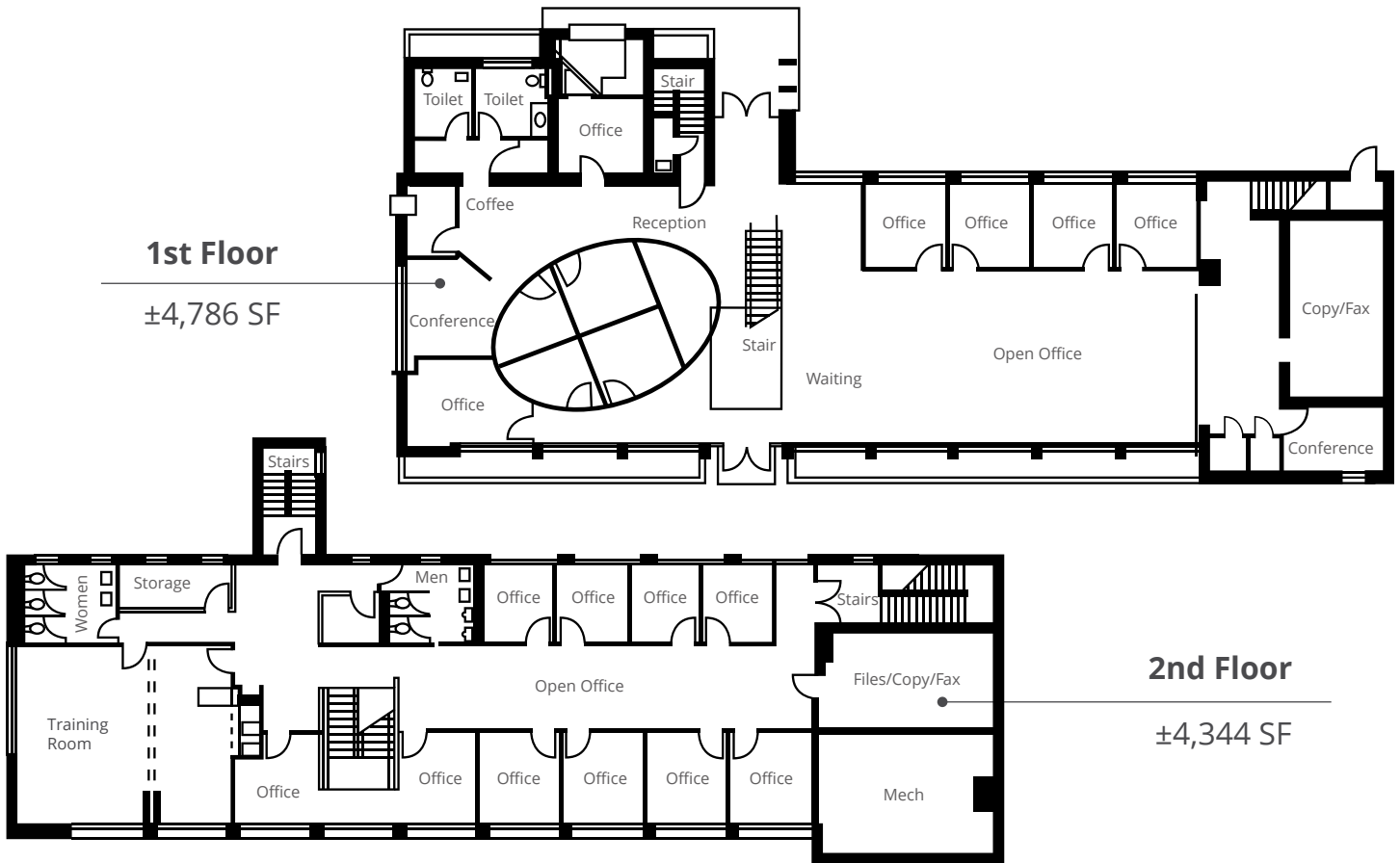
\$15.00/SF + NNN



Evergreen Building

2265 First Ave S, Seattle, WA 98134

Current Availabilities



This document has been prepared by Colliers International for advertising and general information only. Colliers International makes no guarantees, representations or warranties of any kind, expressed or implied, regarding the information including, but not limited to, warranties of content, accuracy and reliability. Any interested party should undertake their own inquiries as to the accuracy of the information. Colliers International excludes unequivocally all inferred or implied terms, conditions and warranties arising out of this document and excludes all liability for loss and damages arising therefrom. This publication is the copyrighted property of Colliers International and/or its licensor(s). © 2024. All rights reserved.