

# FOR LEASE

1009 Monroe Avenue  
Enumclaw, WA 98022



## ENUMCLAW MARKET SQUARE

Lisa Tallman

First Western Properties—Tacoma Inc. | 253.472.0404  
6402 Tacoma Mall Blvd, Tacoma, WA 98409 | fwp-inc.com

**ENUMCLAW, WA** is a quaint city located in the east Puget Sound lowlands surrounded by farmland. The downtown area is filled with locally owned shops and restaurants, which host many events throughout the year such as the Scottish Highland Games, Wine Walks, and the town's annual Christmas Parade.

**1009 MONROE AVENUE**

1,580 ± SF      \$11.00 PSF      \$4.04 NNN (ESTIMATE)

1,894 ± SF      \$18.00 PSF      \$4.04 NNN (ESTIMATE)

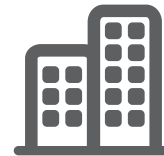
- Primary Retail Center in Enumclaw!
- Anchored by QFC
- Join: Walgreen's, MOD Pizza, Verizon Wireless, Chase Bank, & More!
- Frontage Along Busy SR 410, the Main thoroughfare through the City for Residents and Tourists Traveling to The King County Fairgrounds, Mt. Rainier, and the Cascade Mountains
- Strong Commercial and Retail Development in Enumclaw Proper



Population



Average HH Income

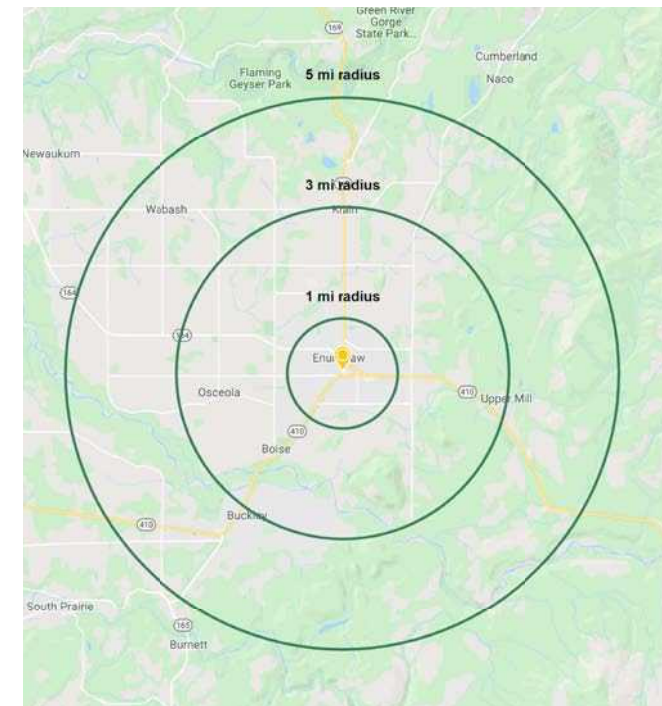


Daytime Population

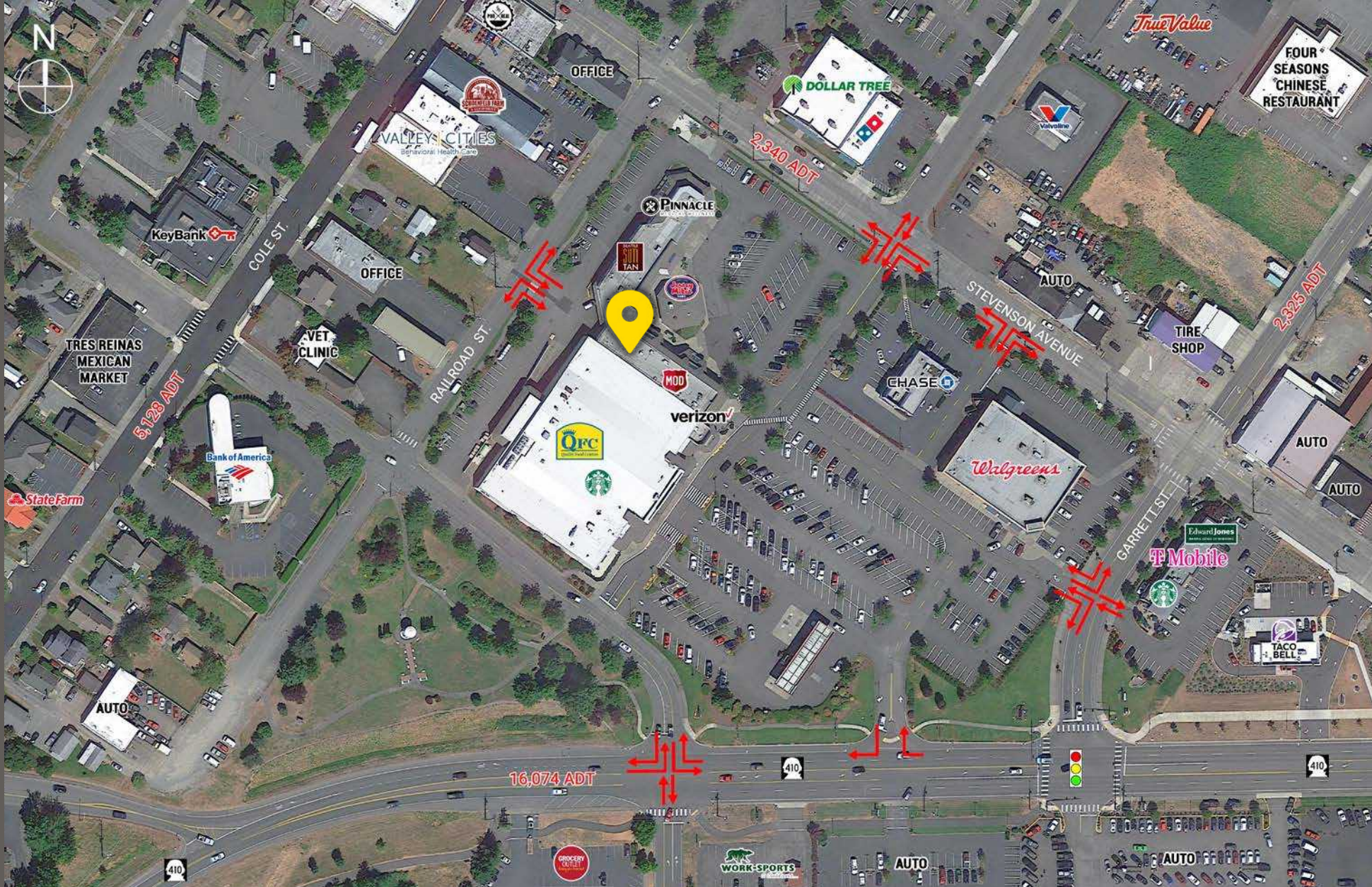
Regis - 2023

	Population	Average HH Income	Daytime Population
Mile 1	10,363	\$147,532	4,890
Mile 3	18,279	\$150,001	6,414
Mile 5	27,772	\$153,699	9,108

**NEARBY TENANTS**



LOCATION DETAILS



Located along  
SR 410



Located in the Heart of  
Enumclaw's Retail Core



16,074 ADT  
SR 410



5,128 ADT  
Cole Avenue

LOCATION DETAILS



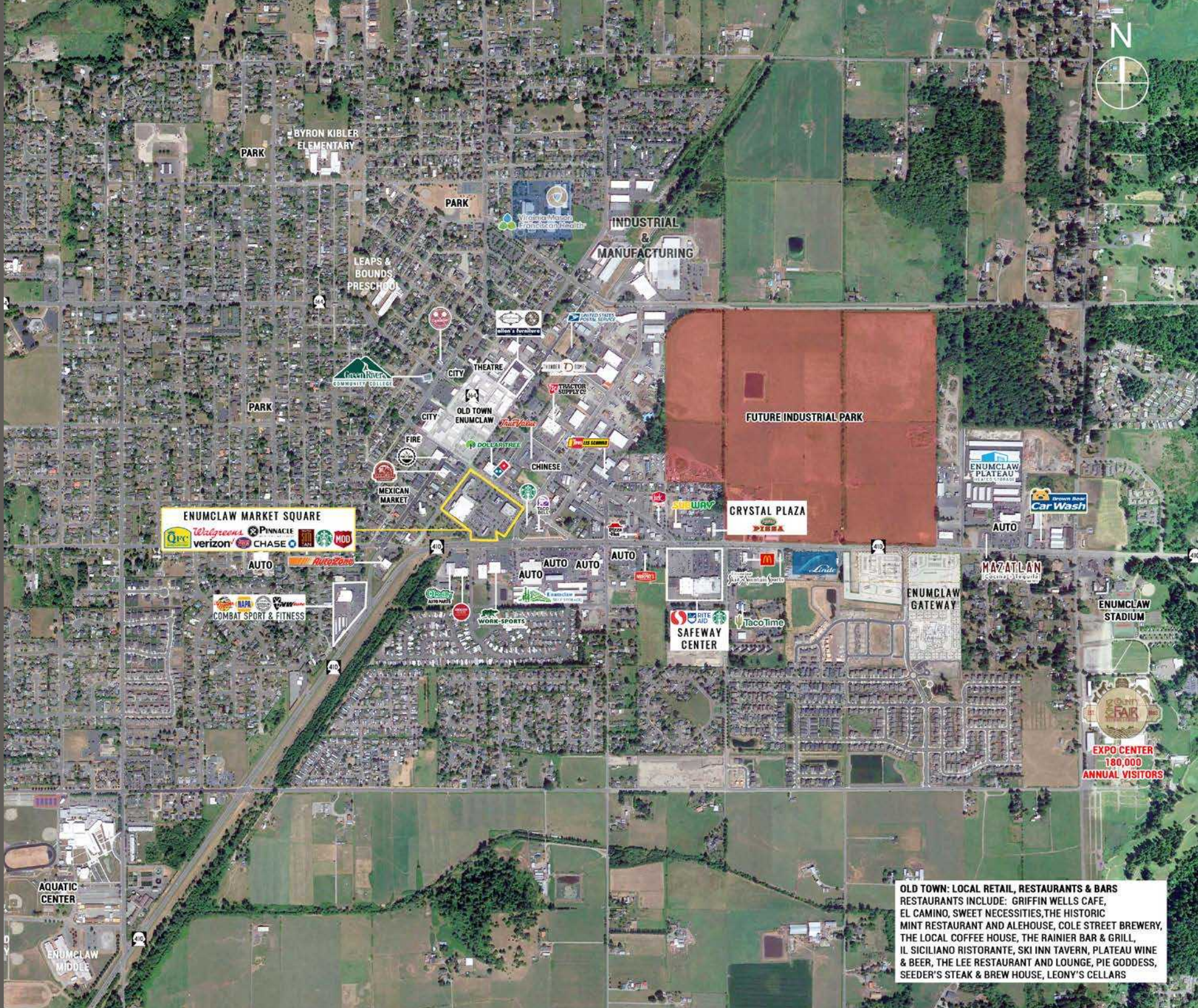
SITE PLAN

1,580 ± SF AVAILABLE

1,894 ± SF AVAILABLE



# MARKET AERIAL



**ENUMCLAW MARKET SQUARE**  
QFC | Walgreens | Pinnacle | verizon | CHASE | MOD | Starbucks | Fire | Mexican Market | Tractor Supply Co. | Subway | Dunkin' Donuts | Dunkin' Donuts | Dunkin' Donuts

**OLD TOWN: LOCAL RETAIL, RESTAURANTS & BARS**  
RESTAURANTS INCLUDE: GRIFFIN WELLS CAFE, EL CAMINO, SWEET NECESSITIES, THE HISTORIC MINT RESTAURANT AND ALEHOUSE, COLE STREET BREWERY, THE LOCAL COFFEE HOUSE, THE RAINIER BAR & GRILL, IL SICILIANO RISTORANTE, SKI INN TAVERN, PLATEAU WINE & BEER, THE LEE RESTAURANT AND LOUNGE, PIE GODDESS, SEEDER'S STEAK & BREW HOUSE, LEONY'S CELLARS



TACOMA | KIRKLAND | PORTLAND | SEATTLE

RELATIONSHIP FOCUSED. RESULTS DRIVEN.

LISA TALLMAN

253.471.5504

[lisa@firstwesternproperties.com](mailto:lisa@firstwesternproperties.com)



First Western Properties—Tacoma Inc. | 253.472.0404  
6402 Tacoma Mall Blvd, Tacoma, WA 98409 | [fwp-inc.com](http://fwp-inc.com)

© First Western Properties, Inc. DISCLAIMER: The above information has been secured from sources believed to be reliable, however, no representations are made to its accuracy. Prospective tenants or buyers should consult their professional advisors and conduct their own independent investigation. Properties are subject to change in price and/or availability without notice.