

# ODDFELLOWS BUILDING

915 E PINE STREET, SEATTLE, WA 98122

## Office Space For Lease

East Hall – Suite 201                    2,642 SF

Suite 101                                    ±1,455 SF

Suite 200                                    ±1,030 SF

Suites 101 and 200 can be combined to ±2,485 SF

### CAVAN O'KEEFE

t 206.395.2903

cavan.okeefe@nmrk.com

### TRACY TURNURE

t 425.372.9923

tracy.turnure@nmrk.com

# NEWMARK





## BUILDING

# Highlights

Dynamic, historic office space for lease in the heart of Capitol Hill

- Built in 1908 and renovated in 2008
- Across from Cal Anderson Park
- One block to Seattle Streetcar's First Hill Line and King County metro buses, four blocks to Link light rail's Capitol Hill Station
- Neighboring retailers include Oddfellows Cafe + Bar, Molly Moon's ice cream, The Tin Table, Le Labo and Elliott Bay Book Company
- New passenger elevator and shared restrooms



BUILDING

# Accessibility

- Easy access to I-5
- 5 minute walk to Link Light Rail
- 1 block from Seattle Streetcar
- Buses: 49,11,60,43,9x
- Protected bike lane on Broadway



WALK SCORE

100



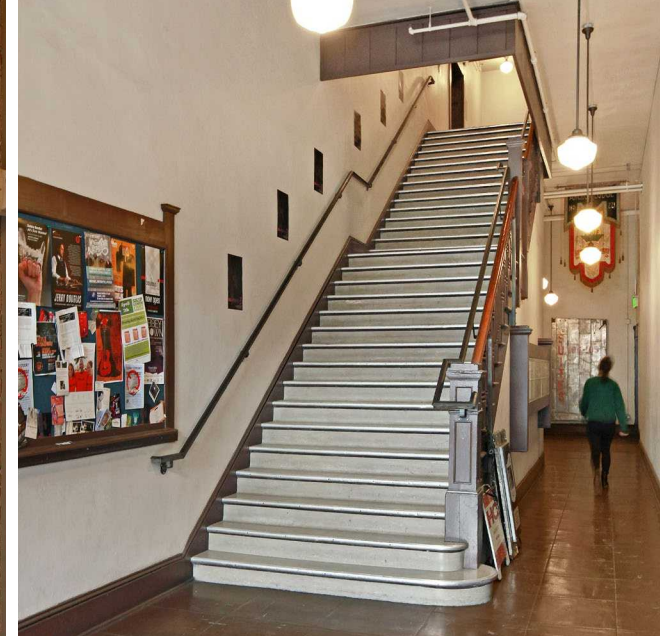
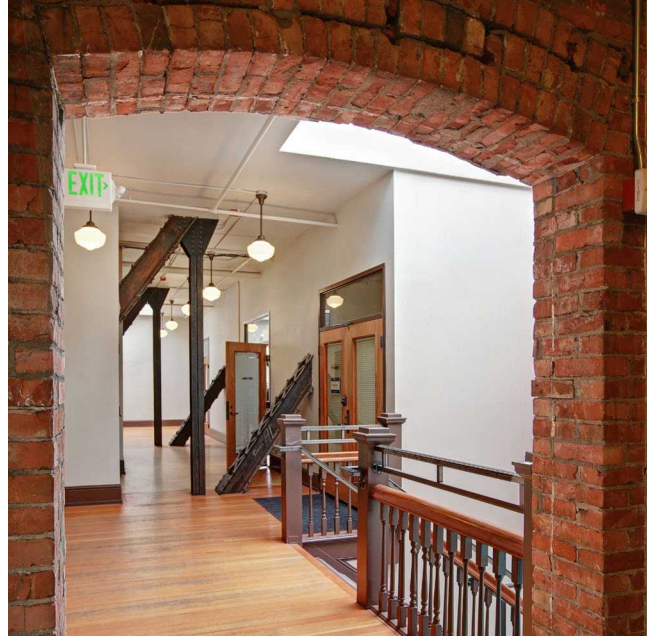
TRANSIT SCORE

86



BIKE SCORE

93



FLOOR PLAN

# Second Floor

East Hall – Suite 201

2,642 SF

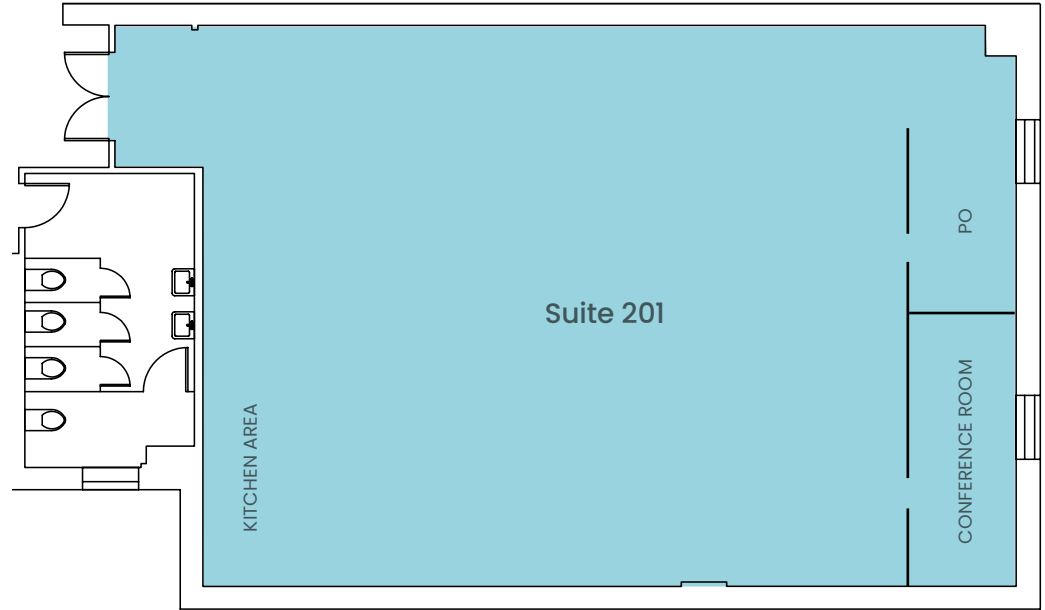
\$26.00 NNN

Available January 1, 2025

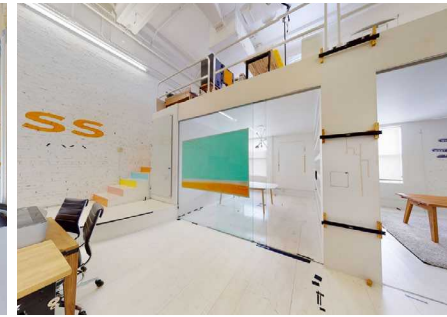
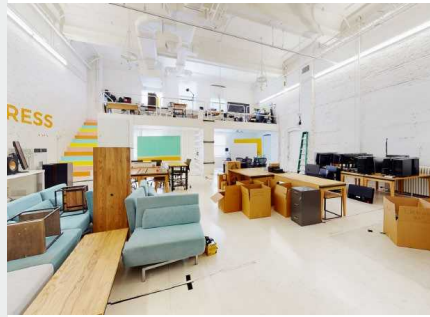
Bright creative office space

Open space, kitchen area, high ceilings, two private offices, and two conference rooms with a mezzanine/storage area

Furniture available at no cost



SUITE 201 VIRTUAL TOUR



FLOOR PLAN

# First Floor

**Suite 101 | ±1,455 SF**

\$18.00 NNN

Available Now

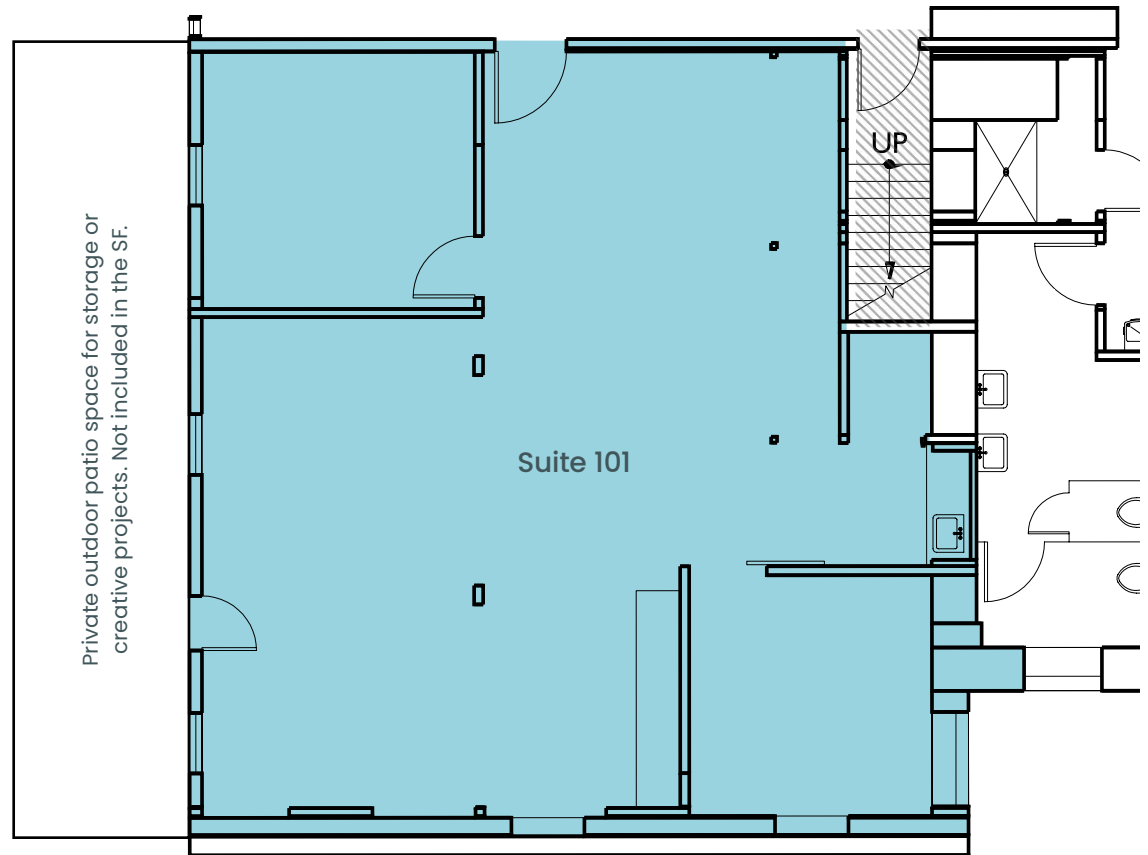
Creative office space

Open space with two private offices and conference rooms

Brick & beam character with high ceilings and a gated outdoor patio

Suite 101 & 200: 1,455-2,485 RSF  
Ideally rented together.

SUITE 101 VIRTUAL TOUR 



FLOOR PLAN

# Second Floor

**Suite 200 | ±1,030 SF**

\$18.00 NNN

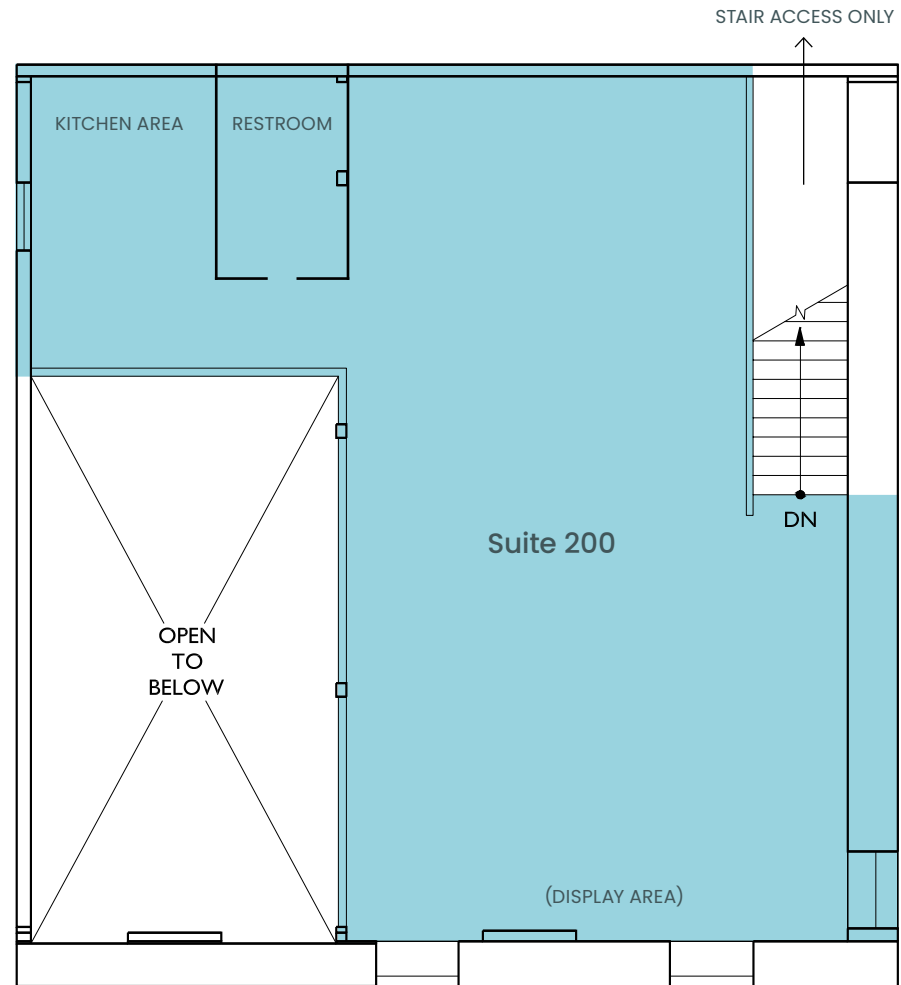
Available Now

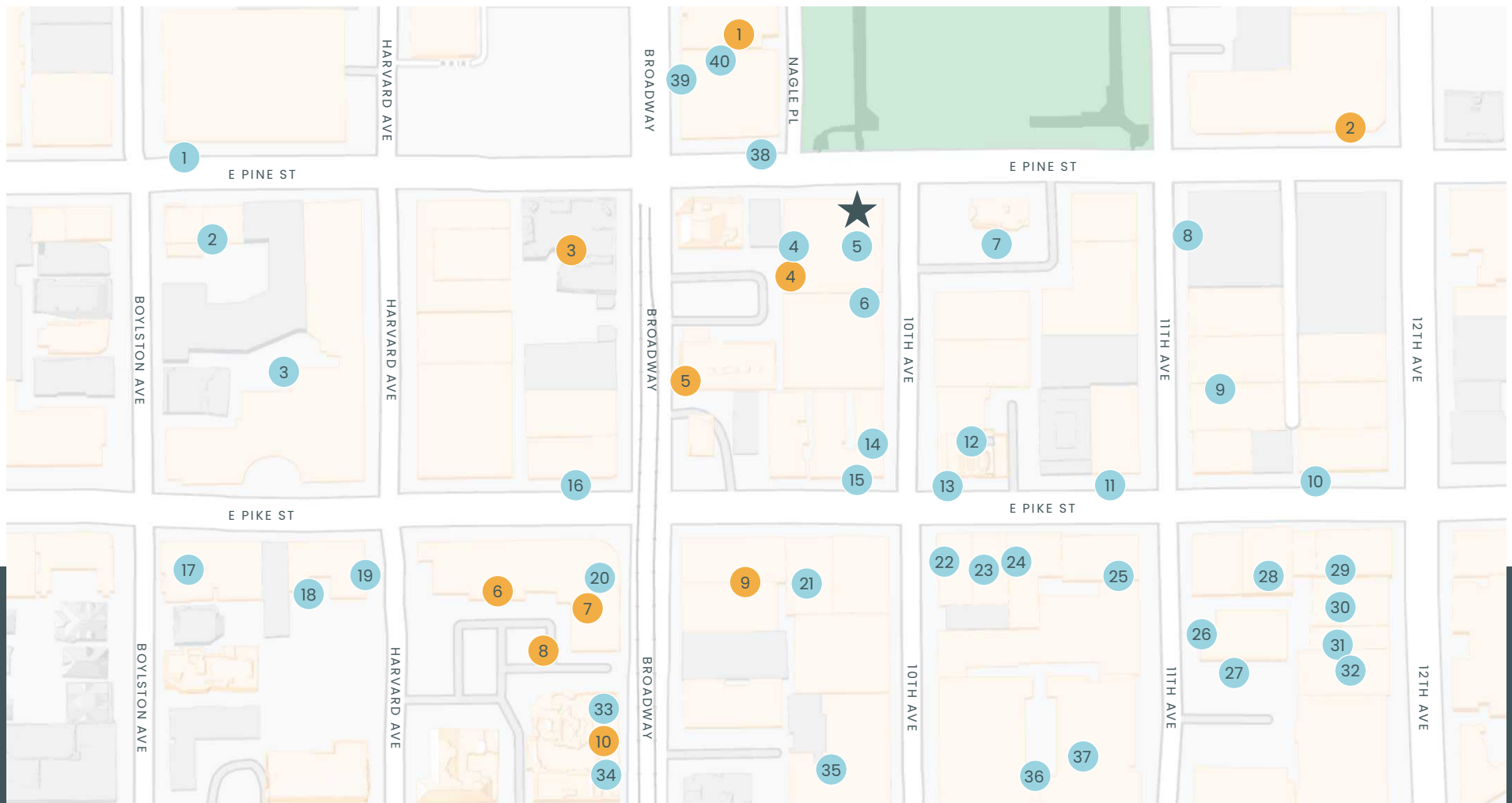
Creative office space

Showroom type of creative space

Stair access only, hardwood floors,  
brick character, open space with  
display areas, kitchen, and bathroom

Suite 101 & 200: 1,455-2,485 RSF  
Ideally rented together.





## EAT & DRINK

1. Hot Mama's Pizza
2. Linda's Tavern
3. Verve Bowls
4. The Tin Table Restaurant & Bar
5. Molly Moon's Homemade Ice cream
6. Oddfellows Cafe & Bar
7. Rancho Bravo Tacos
8. Stout
9. Grim's Provisions & Spirits
10. Unicorn
11. Sam's Tavern
12. Havana
13. Poquitos
14. Lost Lake Cafe & Lounge
15. Comet Tavern
16. Capitol Cider
17. Honey Hole
18. Ayutthaya Thai
19. Saint John's Bar & Eatery
20. Starbucks
21. Via Tribunali
22. Quinn's Pub
23. Cafe Vita
24. Big Mario's Pizza
25. Wildrose
26. Marmite Seattle
27. Petite Galette
28. Cupcake Royale
29. Bai Tong Thai Street Cafe
30. Plum Bistro

31. Osteria la Spiga
32. Plum Chopped
33. Chipotle Mexican Grill
34. 8oz Burger & Co.
35. The Gokan by Musashi
36. General Porpose Doughnuts
37. Bateau
38. Rock Box
39. Yo Zushi
40. Ian's Pizza By The Slice

## SHOP

1. Game Stop
2. NW Liquor and Wine
3. Walgreens
4. Fleet Feet Sports Seattle
5. Mud Bay
6. AT&T Store
7. QFC
8. Havard Market
9. Retail Therapy
10. Bartell Drug

# ODDFELLOWS BUILDING

915 E PINE STREET, SEATTLE, WA 98122

**CAVAN O'KEEFE**

t 206.395.2903

[cavan.okeefe@nmrk.com](mailto:cavan.okeefe@nmrk.com)

**TRACY TURNURE**

t 425.372.9923

[tracy.turnure@nmrk.com](mailto:tracy.turnure@nmrk.com)

## NEWMARK

The information contained herein has been obtained from sources deemed reliable but has not been verified and no guarantee, warranty or representation, either express or implied, is made with respect to such information. Terms of sale or lease and availability are subject to change or withdrawal without notice.