

Retail For Lease

29 TACOMA

*Experience the Rebirth of Tacoma's Iconic Corner:
Historic Renovation Underway*

29 TACOMA AVE | STADIUM DISTRICT | TACOMA, WA 98403



29TACOMA.COM

km Kidder
Mathews



A prime corner in Tacoma, since the early days of the 1920s, 29 Tacoma's historic renovation will transform this iconic location to deliver modern restaurant, retail and office space.

RESTAURANT SF 2,500 - 5,320 SF
\$30 - \$45 NNN

RETAIL/OFFICE SF 1,500 - 13,085 SF
\$30 - \$40 NNN

BROADWAY SUITE 1,100 - 5,000 SF of creative space with high ceilings on Broadway Street level
\$24 NNN

PARKING Secured garage and dedicated surface level parking on Broadway Street level



CONVENIENT
LOCATION
NEAR MAJOR
AMENITIES



RETAIL AND
PROFESSIONAL
OFFICE SPACE
AVAILABLE



AMPLE TRANSIT
CONNECTIONS
NEARBY



SECURED
PARKING
GARAGE



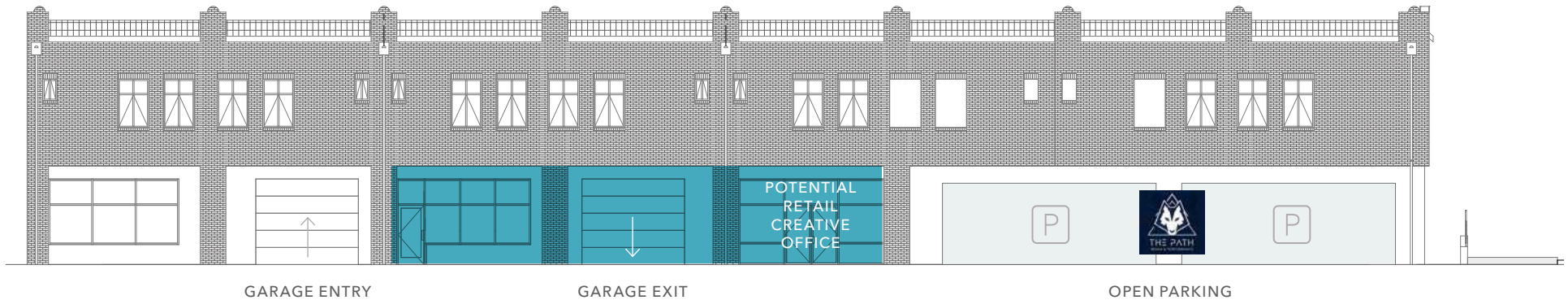
*High profile end cap with
existing restaurant available*

ELEVATIONS

Tacoma Avenue

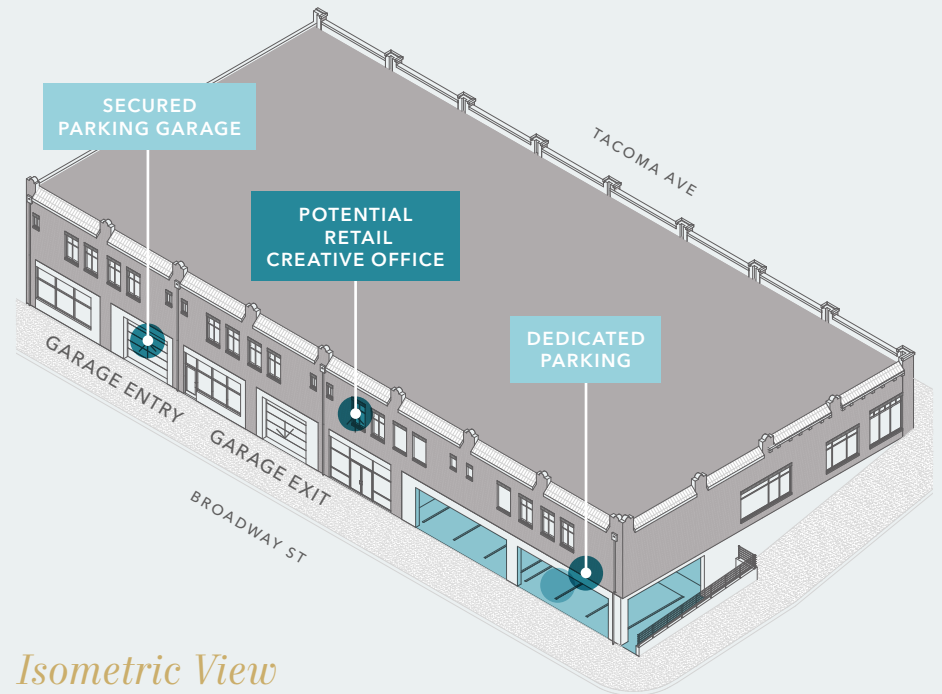
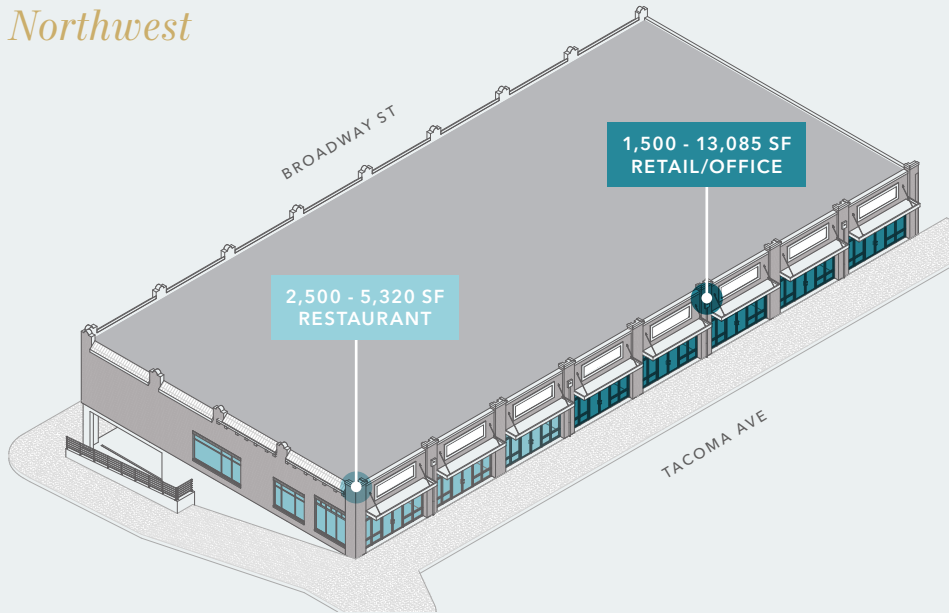


Broadway Street



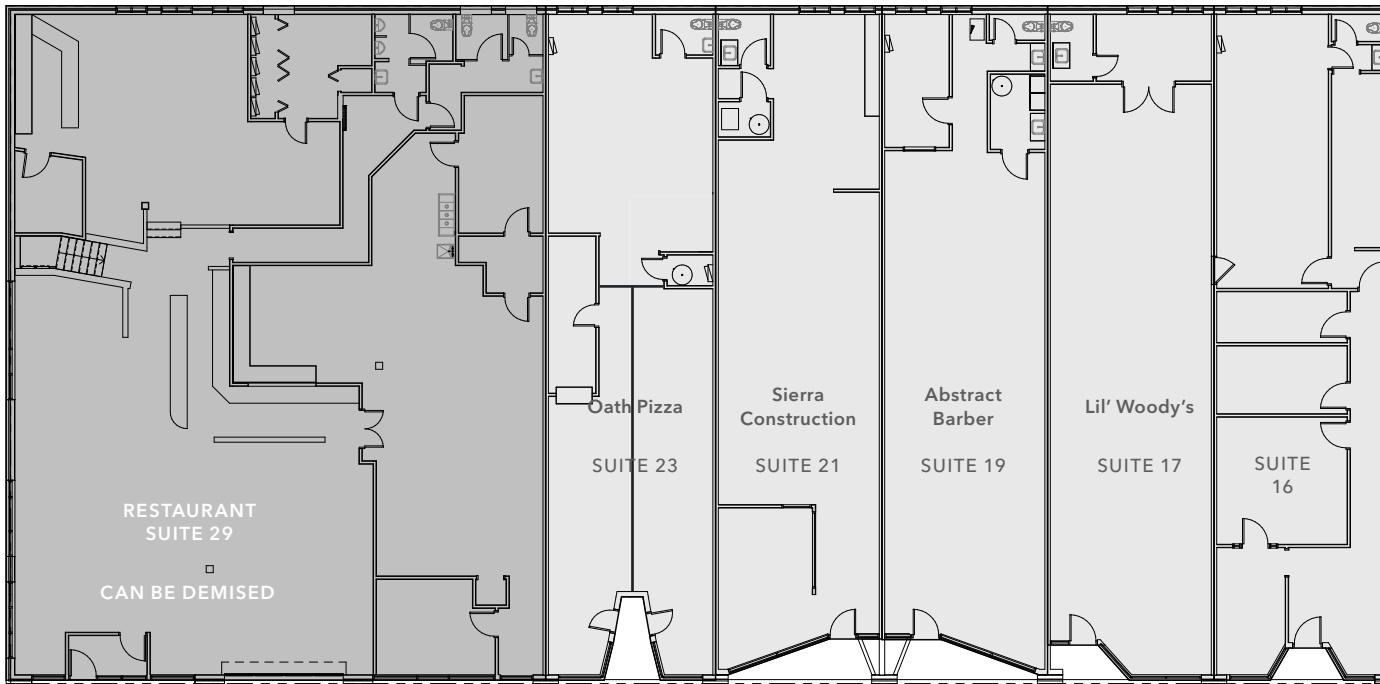
PICTORIAL VIEWS

*Isometric View
Northwest*



*Isometric View
Southwest*

TACOMA AVENUE FLOOR PLAN



1,500-15,500

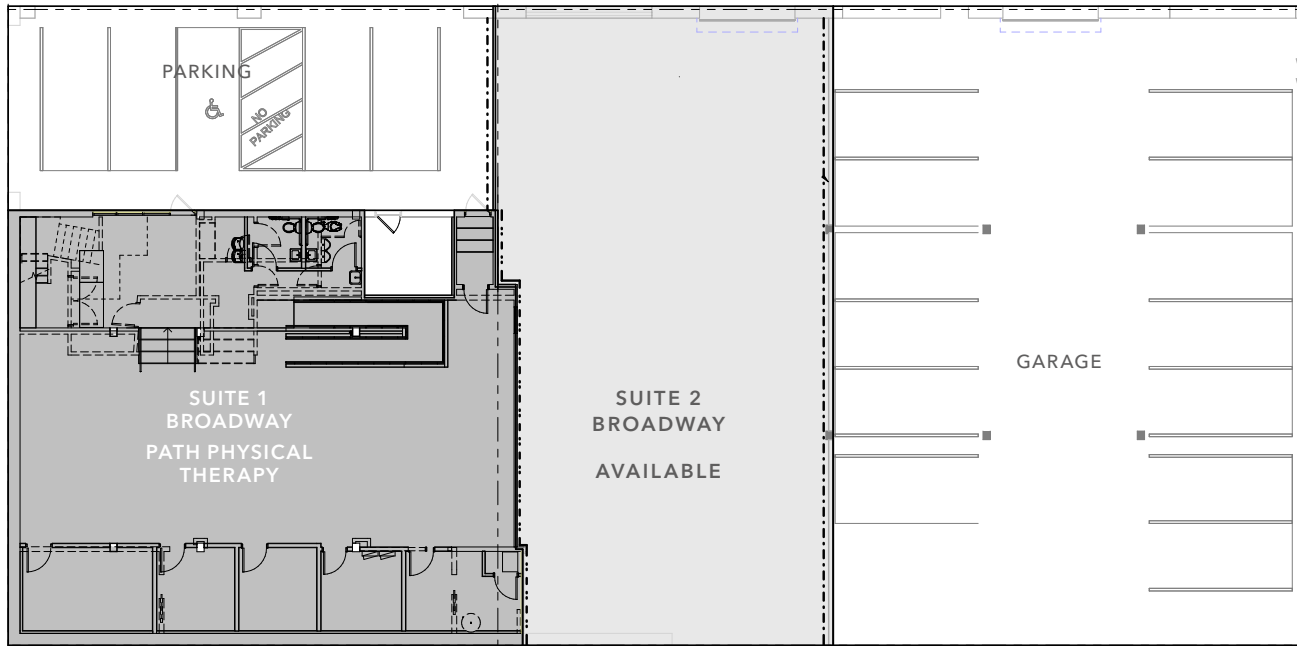
SQUARE FEET AVAILABLE

NOW

AVAILABLE

Suite	Lease Rate (SF/YR)	Size	Notes
Suite 29	\$30 - \$45, NNN	5,320 SF	Existing restaurant with equipment. Can be demised to 16,000 SF
Suite 23	Leased	1,600 SF	Oath Pizza
Suite 21	Leased	1,500 SF	Sierra Construction
Suite 19	\$30 - \$40, NNN	1,500 SF	Abstract Barber lease expiration 5/31/2024
Suite 17	Leased	1,550 SF	Lil' Woody's
Suite 16	\$30 - \$40, NNN	1,685 SF	Shell condition with allowance

BROADWAY STREET FLOOR PLAN



1,100

SQUARE FEET AVAILABLE

17

SECURED PARKING SPACES

Suite	Lease Rate (SF/YR)	Size	Notes
Broadway 1	Leased	3,300 SF	Path PT
Broadway 2	\$24, NNN	1,100 - 5,000 SF	Roll up doors, new storefront

29 TACOMA

WELL-LOCATED IN TACOMA'S COVETED *STADIUM DISTRICT*

Convenient access to Wright Park, grocery, food,
& entertainment

Blocks from Tacoma Link Light Rail

Close proximity to Tacoma General & Mary Bridge
Hospital Campus

Near Downtown Tacoma & new multifamily apartments



Downtown
Tacoma

LIGHT RAIL STATION

RETAIL AVAILABLE FOR LEASE

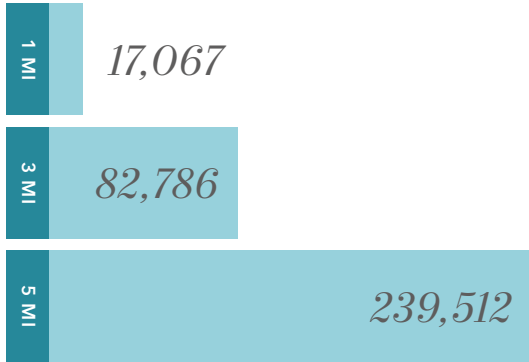
COMMERCE ST

29 TACOMA

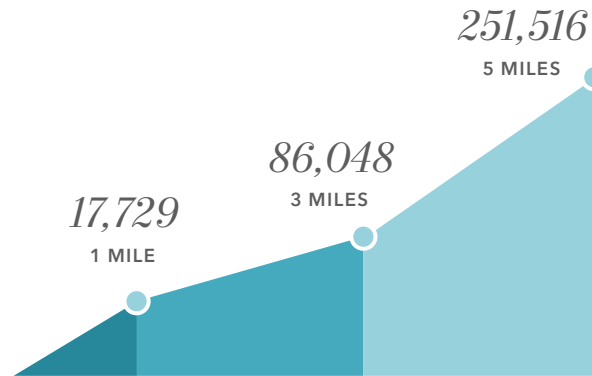
KIDDER MATHEWS

DEMOGRAPHICS

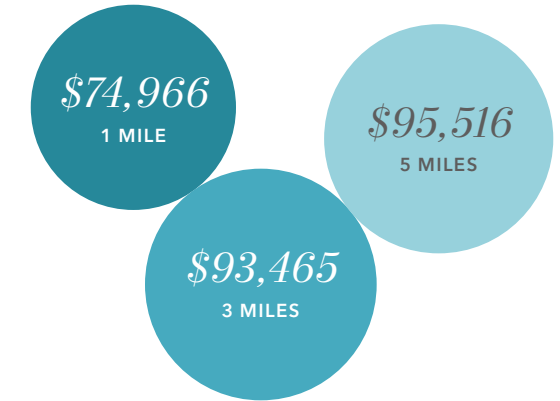
TOTAL POPULATION 2022



ESTIMATED POPULATION 2027



AVERAGE HOUSEHOLD INCOME 2022



SUPERIOR ACCESS

The Tacoma Link Light Rail expansion was delivered in 2022, with six new stations that connect Stadium District, Wright Park, and major medical facilities. 29 Tacoma is only 2 miles away from Tacoma Dome Station which has the most transit connections of any transit hub in Washington state including the Sounder Commuter Train System, AMTRAK, Intercity Link Light Rail, and Pierce County bus lines, making it the most accessible location in the Puget Sound.

95

WALK SCORE

1

BLOCK TO NEAREST BUS STOP

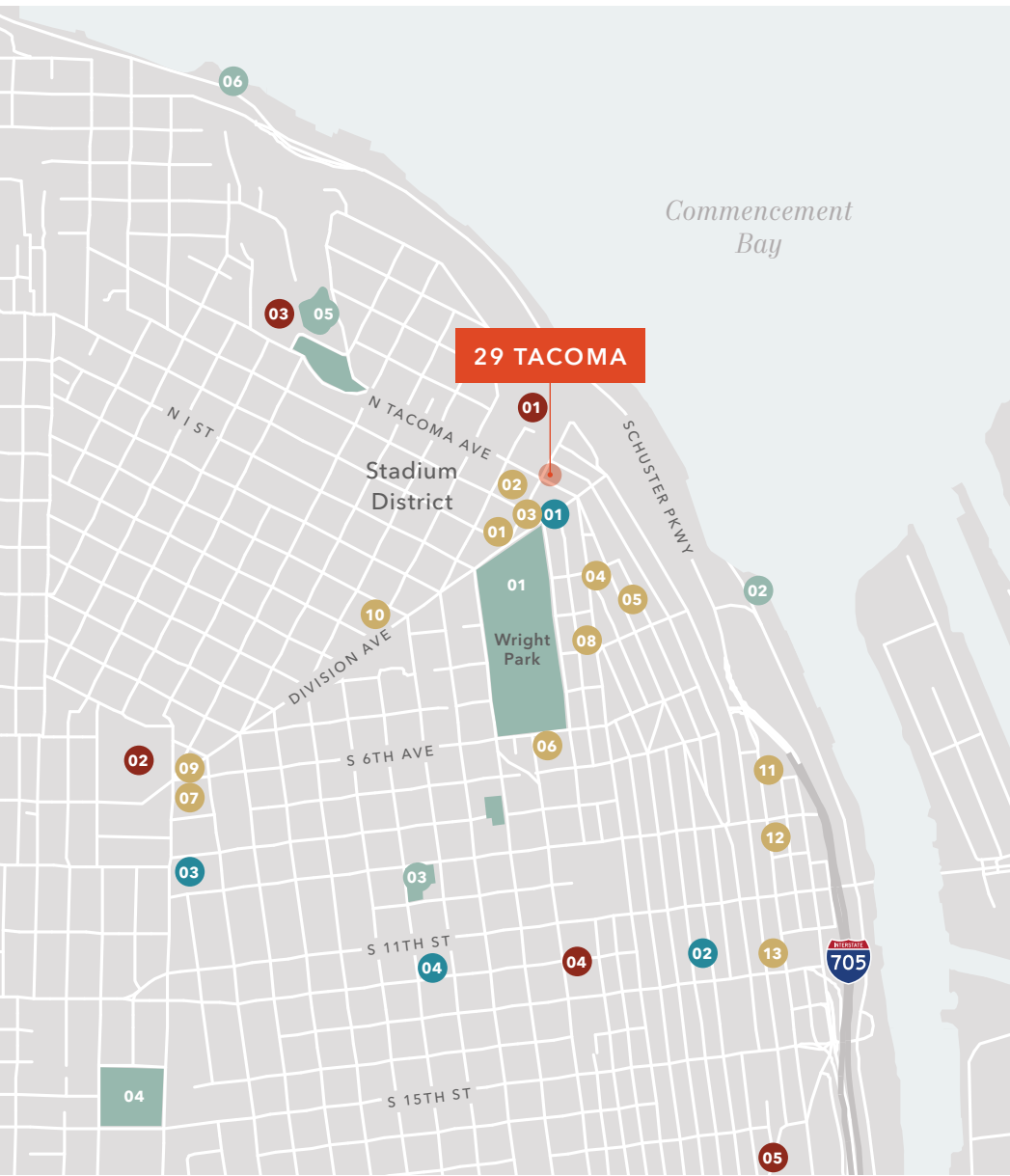
2 MI

TO TACOMA DOME STATION

0.8 MI

TO DOWNTOWN TACOMA





NEARBY AMENITIES

RESTAURANTS & BARS

- 01 Stadium Thriftway
- 02 Indo Asian Street Eatery
- 03 Jimmy John's
- 04 Doyle's Public House
- 05 Le Sel Bistro
- 06 Hob Nob Restaurant
- 07 Southern Kitchen
- 08 Zen Ramen & Sushi Burrito
- 09 Memo's Mexican
- 10 Frisko Freeze
- 11 Matador
- 12 The Forum
- 13 The Old Spaghetti Factory

LIFESTYLE & FITNESS

- 01 Orangetheory Fitness
- 02 Tacoma Center YMCA
- 03 The Training Pit
- 04 Ascent Fitness

RECREATION & PARKS

- 01 Wright Park
- 02 Thea's Park
- 03 People's Park
- 04 Peck Athletic Fields
- 05 Garfield Park
- 06 Jack Hyde Park

SCHOOLS

- 01 Stadium High School
- 02 Hilltop Heritage Middle School
- 03 Anne Wright Schools
- 04 Bates Technical College
- 05 University of Washington Tacoma

29 TACOMA



*Exclusively
leased by*

BEN NORBE
253.722.1410
ben.norbe@kidder.com

29TACOMA.COM

This information supplied herein is from sources we deem reliable. It is provided without any representation, warranty, or guarantee, expressed or implied as to its accuracy. Prospective Buyer or Tenant should conduct an independent investigation and verification of all matters deemed to be material, including, but not limited to, statements of income and expenses. Consult your attorney, accountant, or other professional advisor.

KIDDER.COM

