

# FOR LEASE UNDERWOOD GARTLAND 64

815 Sievers Duecy Blvd • Everett, WA



DEREK HEED  
Executive Vice President  
+1 425 453 3133  
derek.heed@colliers.com

GREGG RIVA  
Executive Vice President  
+1 206 595 1525  
gregg.riva@colliers.com

TALOR OKADA  
Executive Vice President  
+1 425 492 5145  
talor.okada@colliers.com

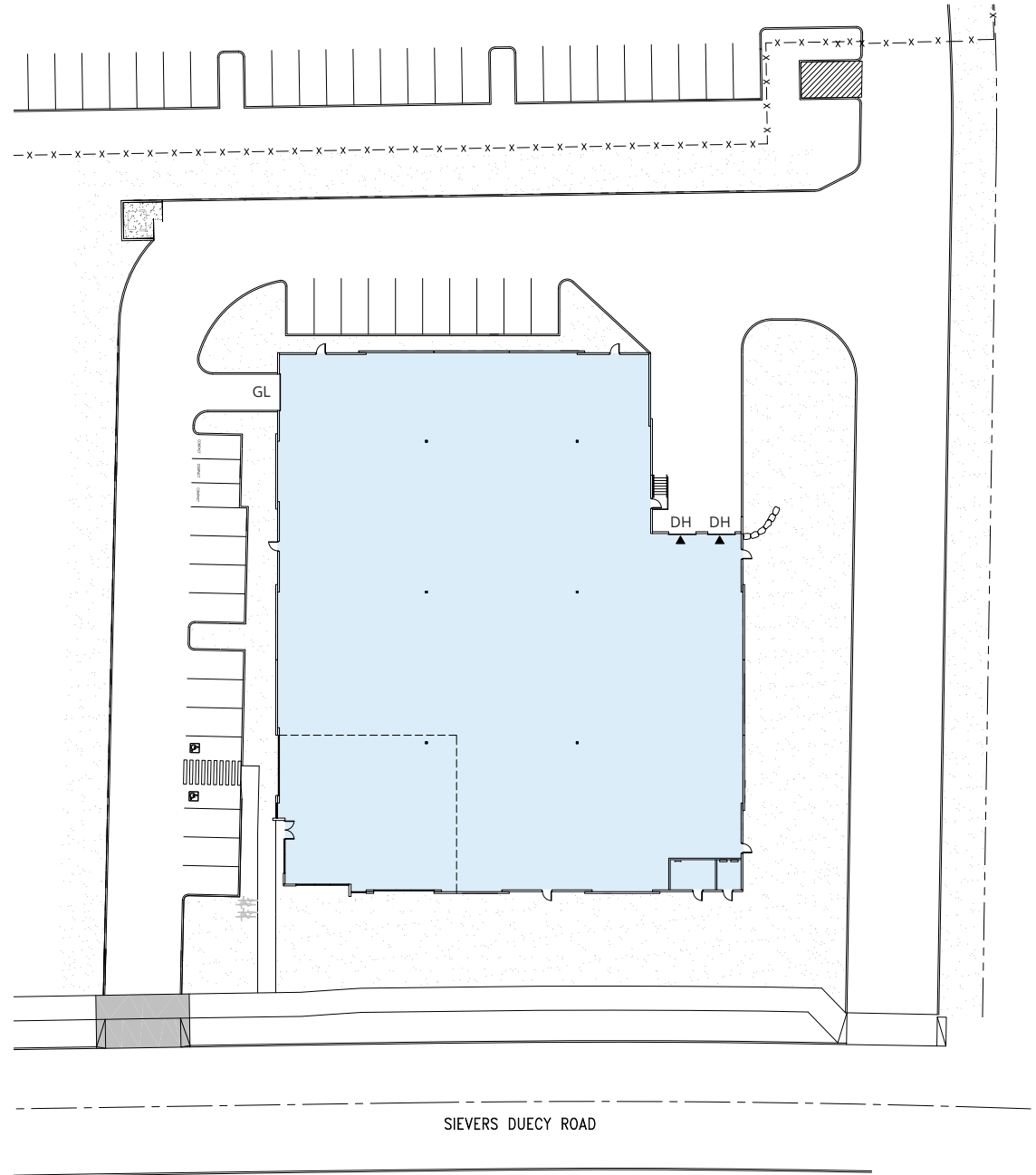


UNDERWOOD GARTLAND  
DEVELOPMENT

# PROPERTY HIGHLIGHTS

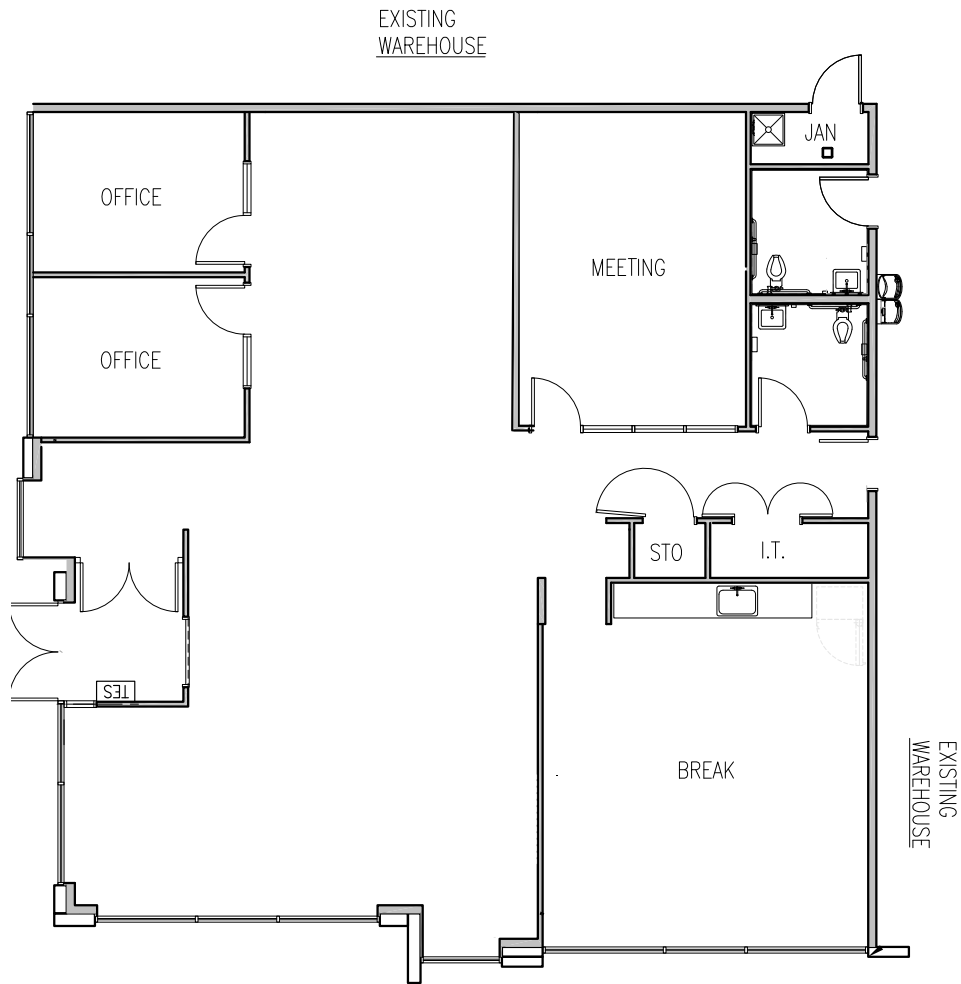


- ±26,666 SF building footprint (~180' x 160')
- 2,596 SF office
- 24' clear height
- 25 parking stalls
- 2 dock high doors (9' x 10')
- 1 drive-in door (12' x 14')
- 50' x 50' column spacing
- 600 amps 277/480 volts 3 phase
- Concrete tilt-up construction
- 110' truck maneuvering in loading area
- T-5 LED hi bay lights
- ESFR sprinkler system
- 5.5" thick rebar reinforced slab





# OFFICE FLOOR PLAN



## Office Highlights

- 2,596 SF
- Two private offices
- Conference room
- Breakroom
- Open work area
- Office and warehouse restrooms







DEREK HEED  
 Executive Vice President  
 +1 425 453 3133  
 derek.heed@colliers.com

GREGG RIVA  
 Executive Vice President  
 +1 206 595 1525  
 gregg.riva@colliers.com

TALOR OKADA  
 Executive Vice President  
 +1 425 492 5145  
 talor.okada@colliers.com

