

FOR LEASE

Owned and Operated by



South 200th St Industrial Building

2367 South 200th St, SeaTac, WA 98198



±2,325 SF



LEASING INFO
& CONTACT

Kent Channing
Arie Salomon

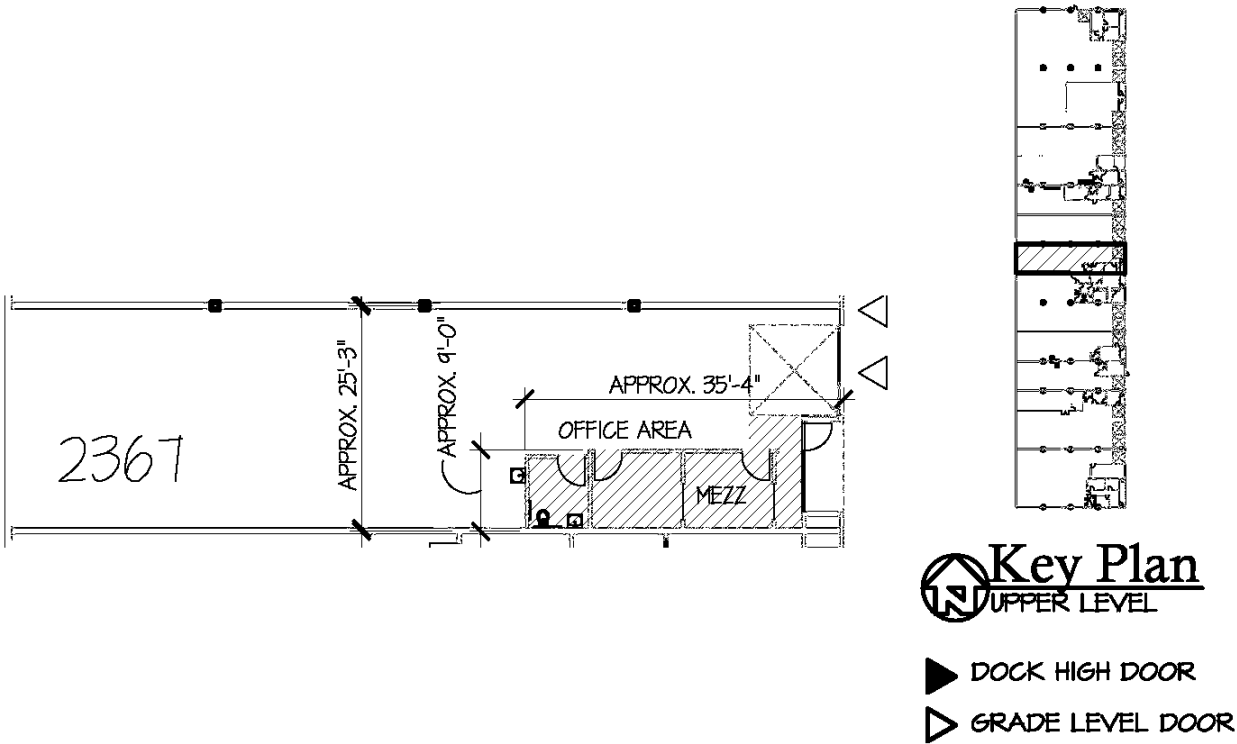
(425) 586-5628 / kchanning@nai-psp.com
(425) 586-5636 / asalomon@nai-psp.com



This is not an offer or acceptance of an offer to lease space. A lease will only be offered or made in a written agreement signed by landlord. No representation or warranty of any kind is made by landlord unless set forth in a written definitive lease executed by the landlord.

OVERVIEW

2,325 SF
332 SF Office
1 grade level door
16' Clear Height
Excellent access to I-5 & SR-509
Lease Rate: \$1.20 Shell, \$1.25 office add on
NNN's: \$0.38
Available with 60 days notice



 **2367 South 200th Street, Seatac, Washington**

SCALE : 1" = 20'-0"

TOTAL AREA: 2,325 S.F.

OFFICE AREA: 332 S.F.