



RETAIL FOR LEASE

5516 20th Ave NW, Seattle, WA 98107



DISCOVER YOUR NEXT RETAIL SPACE IN THE HEART OF BALLARD, SEATTLE!

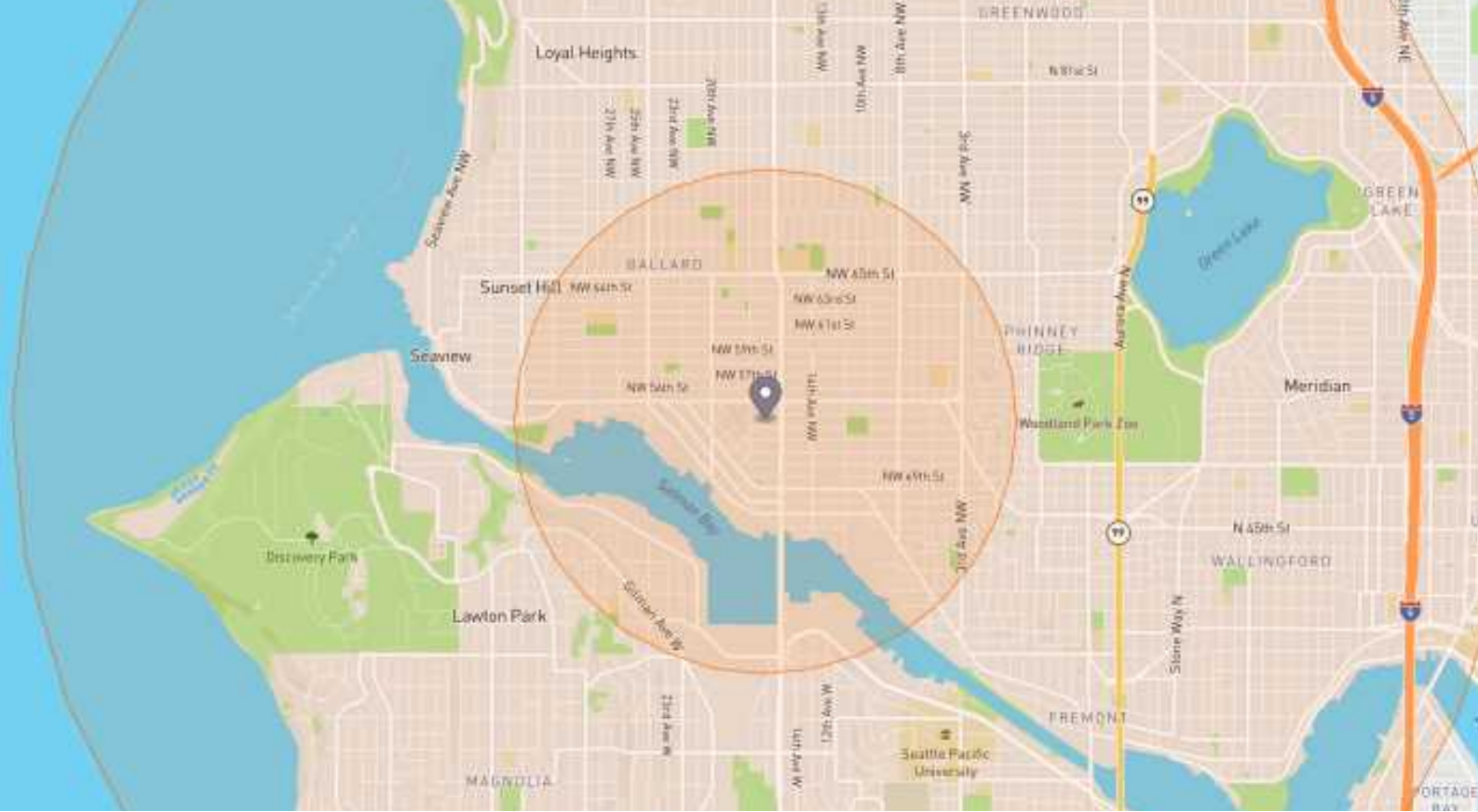
JOIN A LINEUP OF SUCCESSFUL BUSINESSES IN ONE OF SEATTLE'S MOST SOUGHT-AFTER NEIGHBORHOOD VILLAGE DESTINATIONS.

- ✓ Prime heart of Ballard retail space
- ✓ 1,000 - 3,600sf available
- ✓ Vibrant Ballard community
- ✓ Capitalize on one of the highest density neighborhoods in Seattle.

Contact:
Mike Todd
Managing Broker
206-708-4655

 1200 Westlake Ave N, #608,
Seattle, WA 98109

 mike@wolfbayam.com



NEIGHBORHOOD DEMOGRAPHICS

How many
people live
here?

1 MI	3 MI
35K	214K
CITY: 735K	COUNTY: 2,254K

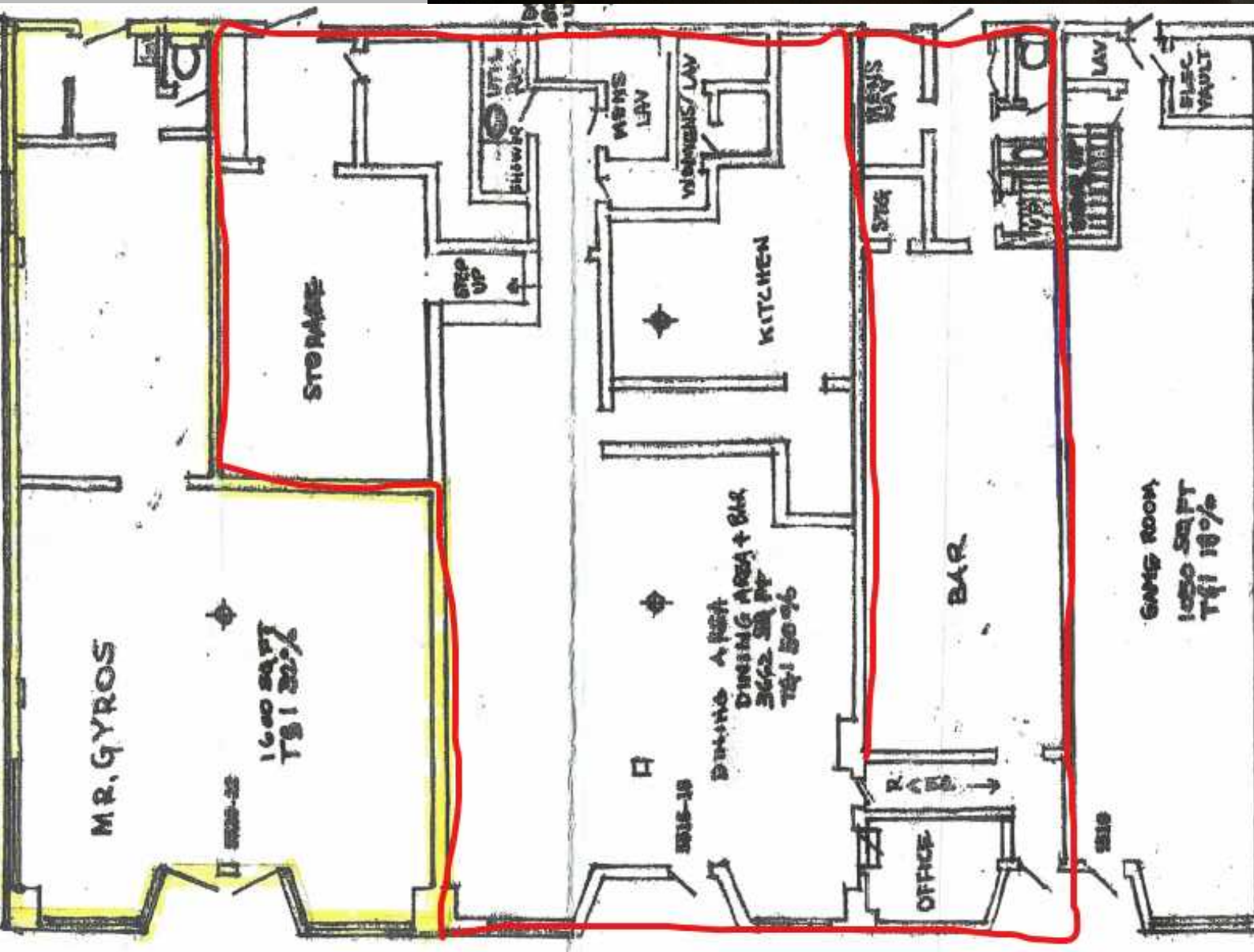
How much
money do
they make?

1 MI	3 MI
\$135K	\$126K
CITY: \$116K	COUNTY: \$116K
<i>median household income</i>	

How **old** are they?

1 MI	3 MI
34	34
CITY: 35	COUNTY: 37
<i>median age in years</i>	







BALLARD IS NOT JUST A PLACE; IT'S A COMMUNITY

Look no further than the vibrant and eclectic Ballard neighborhood in Seattle! Nestled between the historic charm of old-world architecture and the trendy, modern pulse of urban living, our retail space is the canvas for your entrepreneurial dreams.

Situated in the heart of Ballard, our retail space boasts prime real estate that guarantees a steady flow of foot traffic. Surrounded by bustling cafes, chic boutiques, and a lively community spirit. Benefit from the charm of Ballard's historic streets while embracing the innovative and forward-thinking atmosphere that defines Seattle.

Ballard's distinctive character creates a memorable backdrop for your retail venture. The neighborhood is a melting pot of creativity, culture, and commerce