



# RETAIL FOR LEASE

2609 NW Market St, Seattle, WA 98107



**DISCOVER YOUR NEXT RETAIL SPACE IN THE HEART OF  
BALLARD, SEATTLE!**

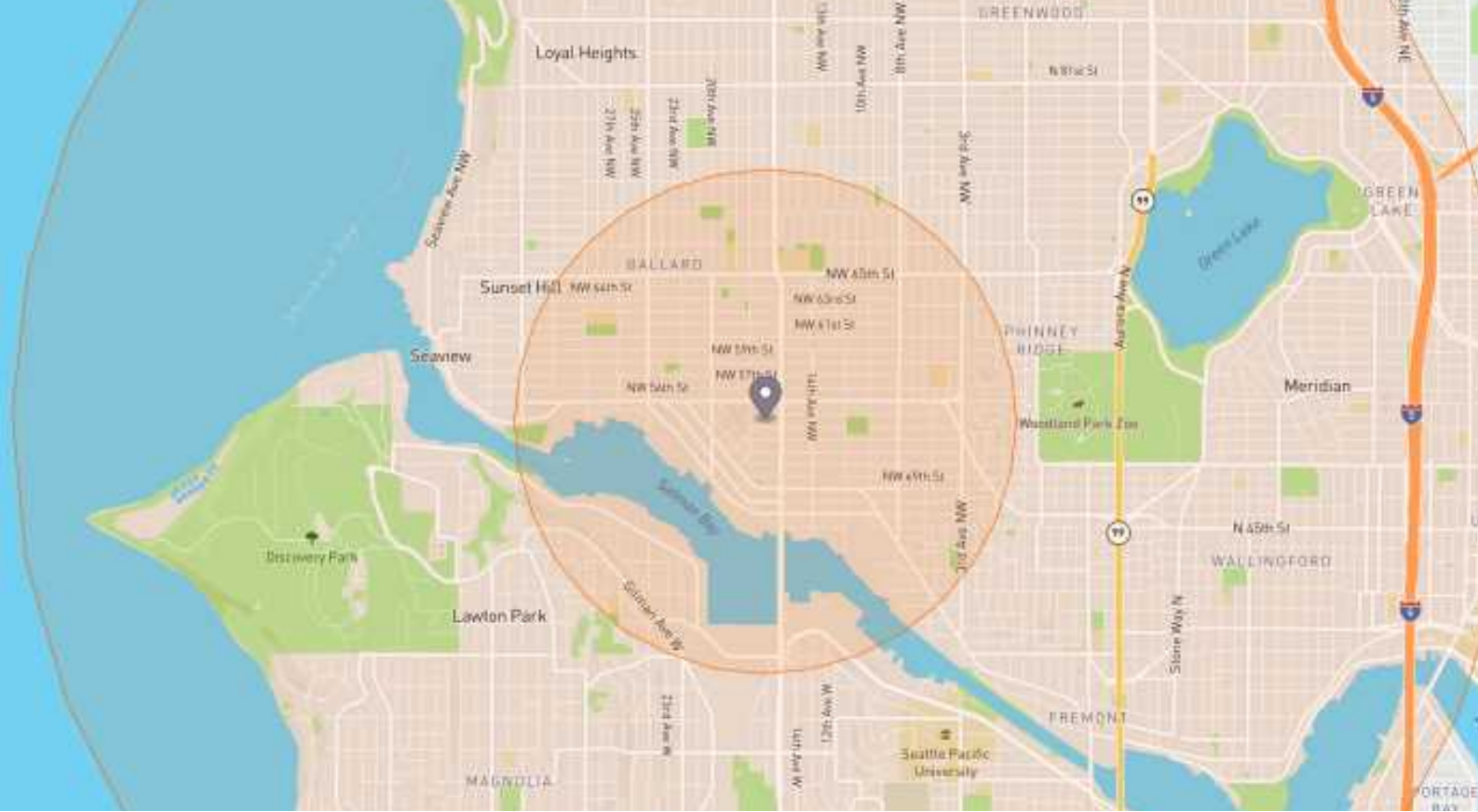
**JOIN A LINEUP OF SUCCESSFUL BUSINESSES IN ONE OF  
SEATTLE'S MOST SOUGHT-AFTER NEIGHBORHOOD  
VILLAGE DESTINATIONS.**

- ✓ Prime heart of Ballard retail space
- ✓ 1,357sf available
- ✓ Adjacent to the National Nordic Museum
- ✓ Capitalize on one of the highest density neighborhoods in Seattle.

Contact:  
Mike Todd  
Managing Broker  
206-708-4655

 1200 Westlake Ave N, #608,  
Seattle, WA 98109

 [mike@wolfbayam.com](mailto:mike@wolfbayam.com)



## NEIGHBORHOOD DEMOGRAPHICS

How many  
**people** live  
here?

1 MI

**35K**

CITY: 735K

3 MI

**214K**

COUNTY: 2,254K

How much  
**money** do  
they make?

1 MI

**\$135K**

CITY: \$116K

3 MI

**\$126K**

COUNTY: \$116K

*median household income*

How **old** are they?

1 MI

**34**

CITY: 35

3 MI

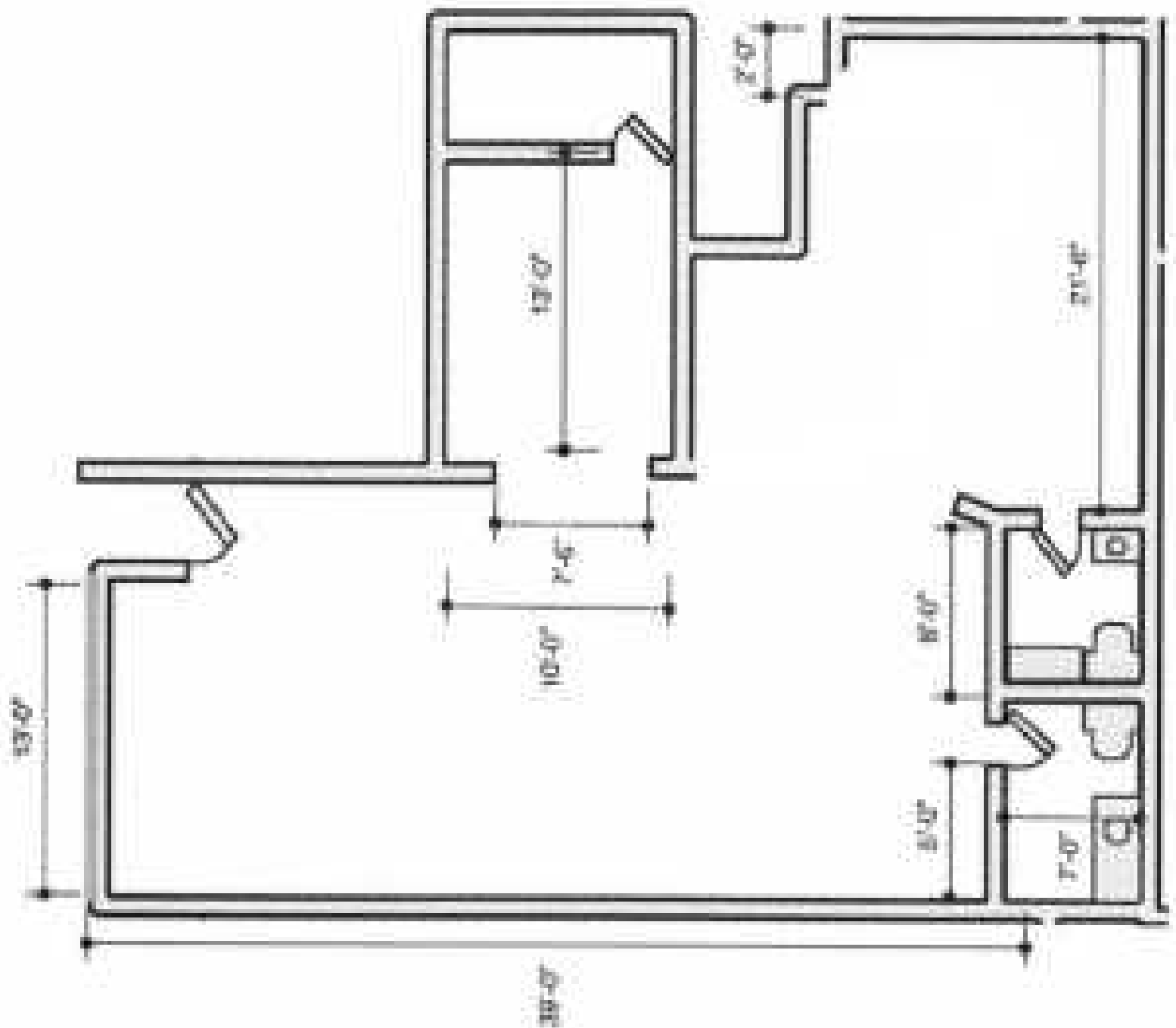
**34**

COUNTY: 37

*median age in years*









## **BALLARD IS NOT JUST A PLACE; IT'S A COMMUNITY**

Look no further than the vibrant and eclectic Ballard neighborhood in Seattle! Nestled between the historic charm of old-world architecture and the trendy, modern pulse of urban living, our retail space is the canvas for your entrepreneurial dreams.

Situated in the heart of Ballard, our retail space boasts prime real estate that guarantees a steady flow of foot traffic. Surrounded by bustling cafes, chic boutiques, and a lively community spirit. Benefit from the charm of Ballard's historic streets while embracing the innovative and forward-thinking atmosphere that defines Seattle.

Ballard's distinctive character creates a memorable backdrop for your retail venture. The neighborhood is a melting pot of creativity, culture, and commerce