



CLARION PARTNERS

For Lease

Exclusively listed by:



Everett Commerce Center – Building A

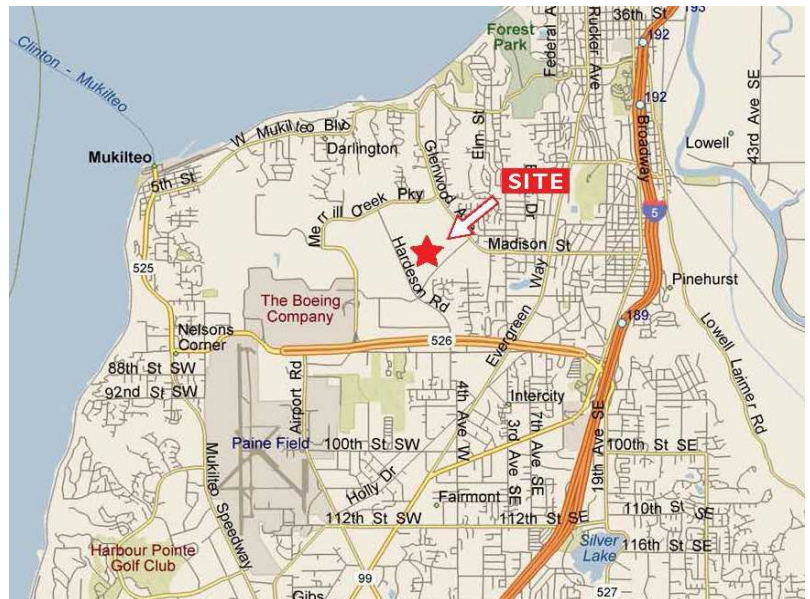
6611 Associated Blvd.  
Everett, WA 98203

91,544 Square Feet Available

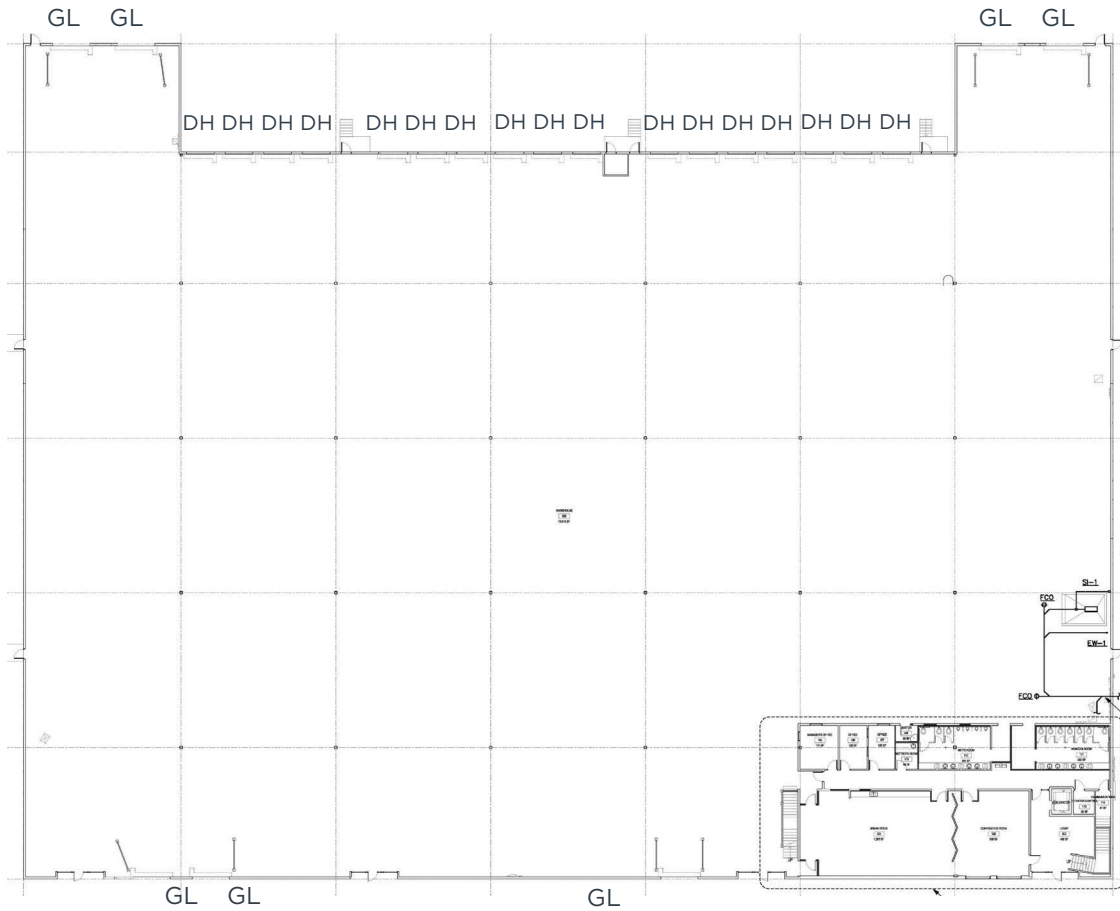


**BUILDING HIGHLIGHTS**

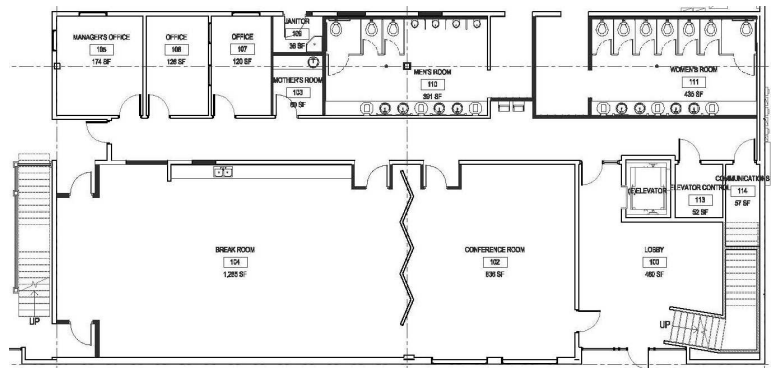
- 9,760 SF office / 81,784 SF warehouse
- 24' clear height
- Sprinklered
- 17 dock high doors
- 7 grade-level doors (4 in back, 3 in front)
- 480 volts/1200 amps 3 phase service
- Fully temperature-controlled warehouse area
- 41' x 50' typical column spacing
- 1.67 parking stalls per 1,000 SF
- Available November 1, 2024
- Contact brokers for rates



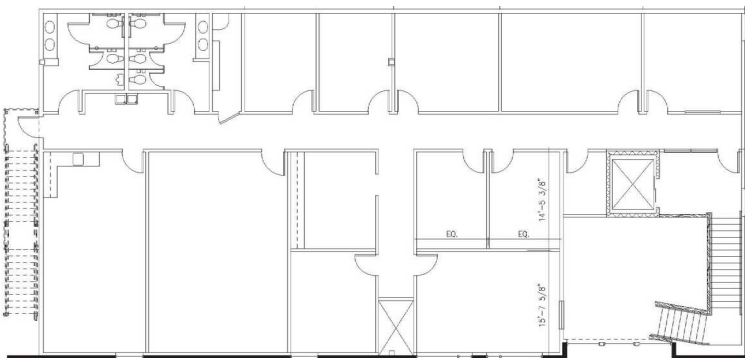
This information contained herein was obtained from sources deemed reliable and is believed to be true. It has not been verified and as such, cannot be warranted nor form any part of any future contract.



First Floor Office



Second Floor Office







# CLARION PARTNERS

Everett Commerce Center – Building A



## PROPERTY HIGHLIGHTS

- Located in the popular Seaway Business Center next to Boeing’s Everett facility
- Convenient access to SR 526, I-5, and many nearby amenities
- Business friendly City of Everett
- Within 10 minutes of Paine Field Airport
- Corporate neighbors include Boeing, Amazon, Seattle Genetics, Helion, Food Services of America, Aviation Technical Services and Fluke



## CLARION PARTNERS

[www.clarionpartners.com](http://www.clarionpartners.com)

For more information on this opportunity, please contact:

Derek Heed  
425.453.3133  
[derek.heed@colliers.com](mailto:derek.heed@colliers.com)

Gregg Riva  
206.595.1525  
[gregg.riva@colliers.com](mailto:gregg.riva@colliers.com)

Talor Okada  
425.492.5145  
[talor.okada@colliers.com](mailto:talor.okada@colliers.com)

