

300

E PINE ST
SEATTLE, WASHINGTON

520-10,312 SF
available for lease

CHARLIE FARRA
Senior Managing Director
206.999.2928
charlie.farra@nrmk.com

CAVAN O'KEEFE
Senior Managing Director
206.395.2903
cavan.okeefe@nrmk.com

ED MAO
Associate
310.694.7191
edward.mao@nrmk.com

NEWMARK



300 E PINE STREET

SEATTLE, WASHINGTON

- Iconic Capitol Hill Historic building with 50 yard line location near all the hottest retail.
- 520-10,312 SF available for lease.
- Centrally located office spaces in the heart of vibrant Capitol Hill.
- Highly accessible with many retail and restaurant options located within a 5-minute walk, including The Pine Box on the ground level of the building.
- Rare parking available.
- Lower level storage possibilities.

Floor 1	520-1,425 SF
Floor 2	1,049 SF
Floor 3	5,760 SF
Lower Level	2,078 SF
Total SF	10,312 SF

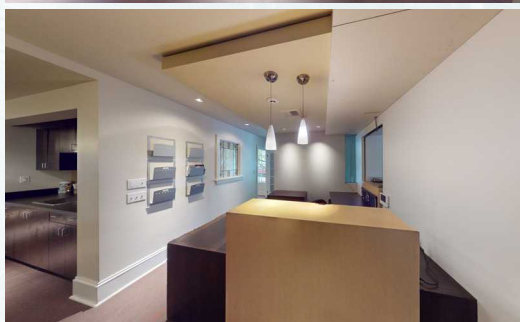
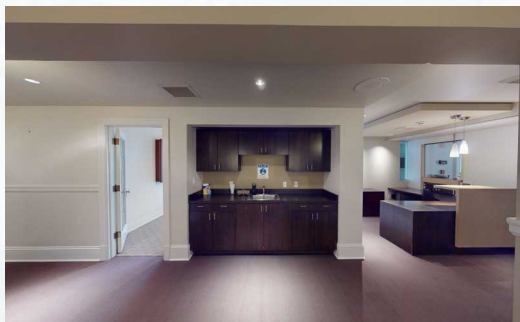
FLOOR PLAN | 520-1,425 SF




300

E PINE ST
SEATTLE, WASHINGTON

1ST FLOOR

TAKE A VIRTUAL TOUR 



-  RESTAURANT
-  SHARED
-  OFFICE

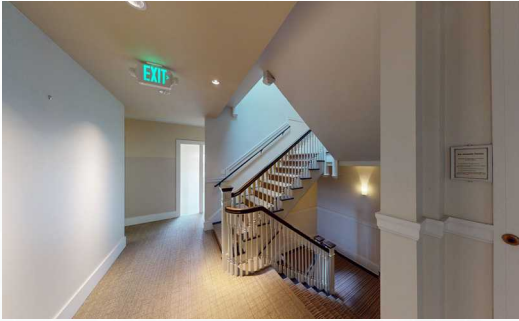
FLOOR PLAN | 1,049 SF

300

E PINE ST
SEATTLE, WASHINGTON

2ND FLOOR

TAKE A VIRTUAL TOUR 



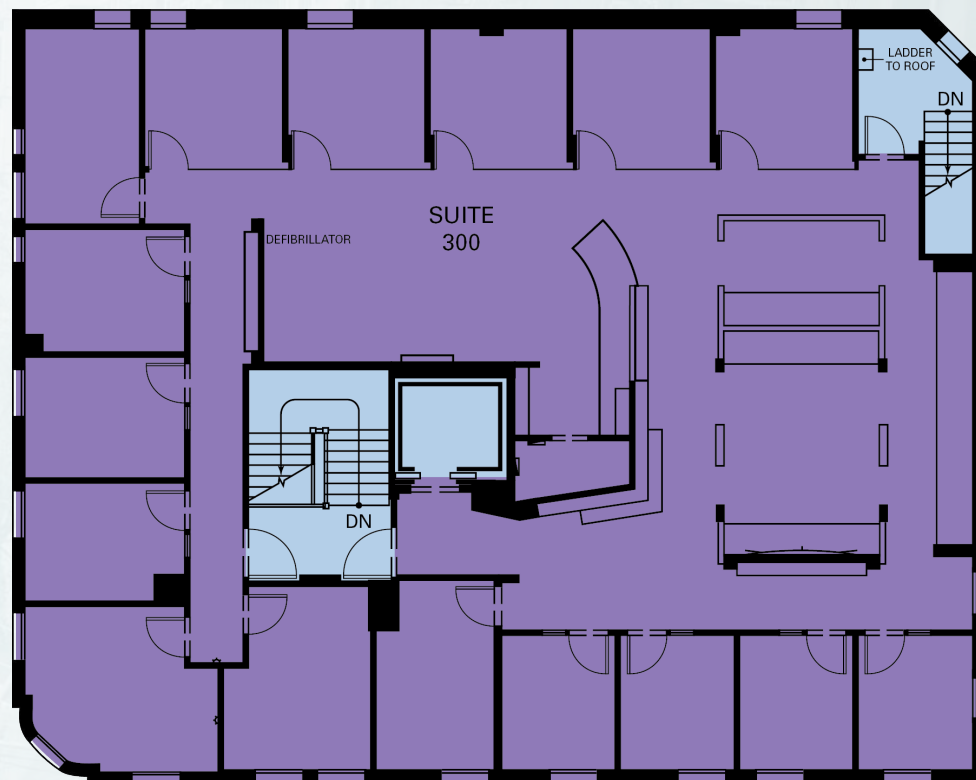
-  LEASED
-  SHARED
-  OFFICE

FLOOR PLAN | 5,760 SF

300

E PINE ST
SEATTLE, WASHINGTON

TAKE A VIRTUAL TOUR 

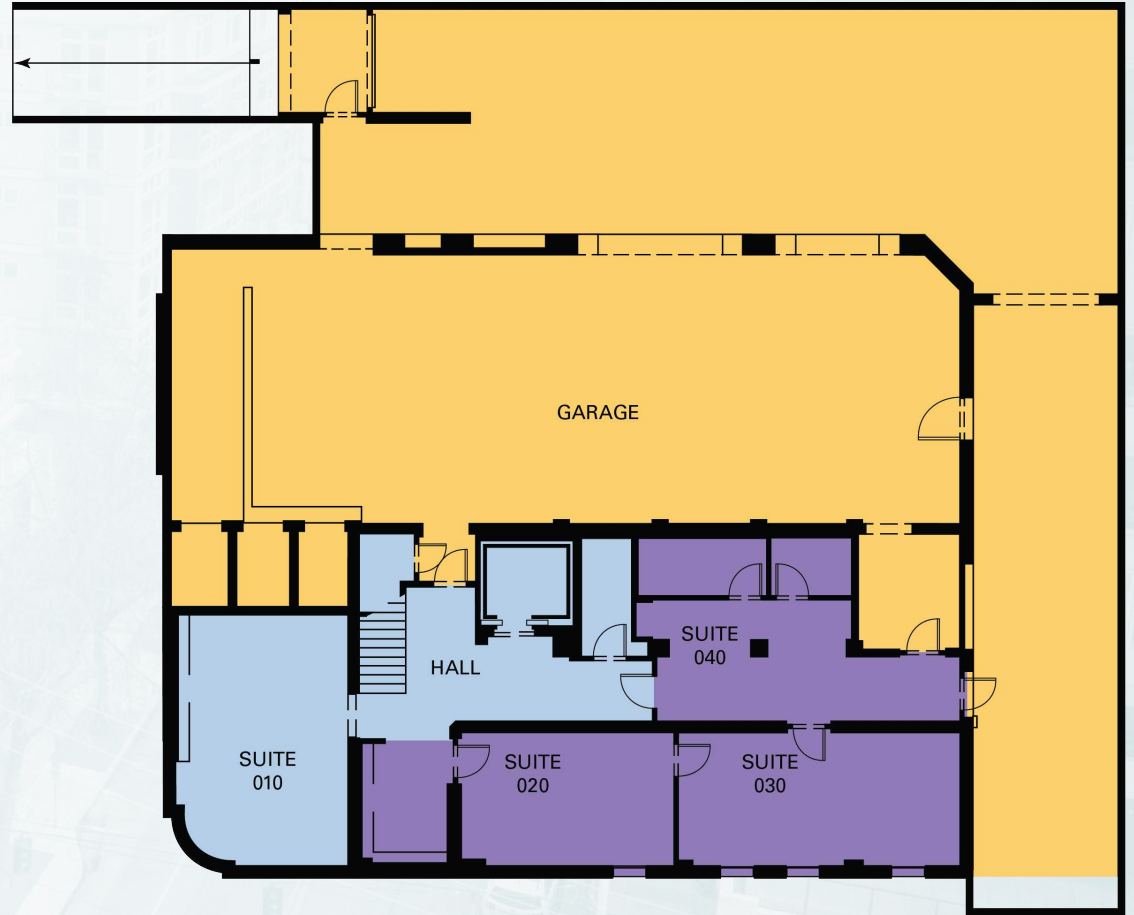


 SHARED
 OFFICE

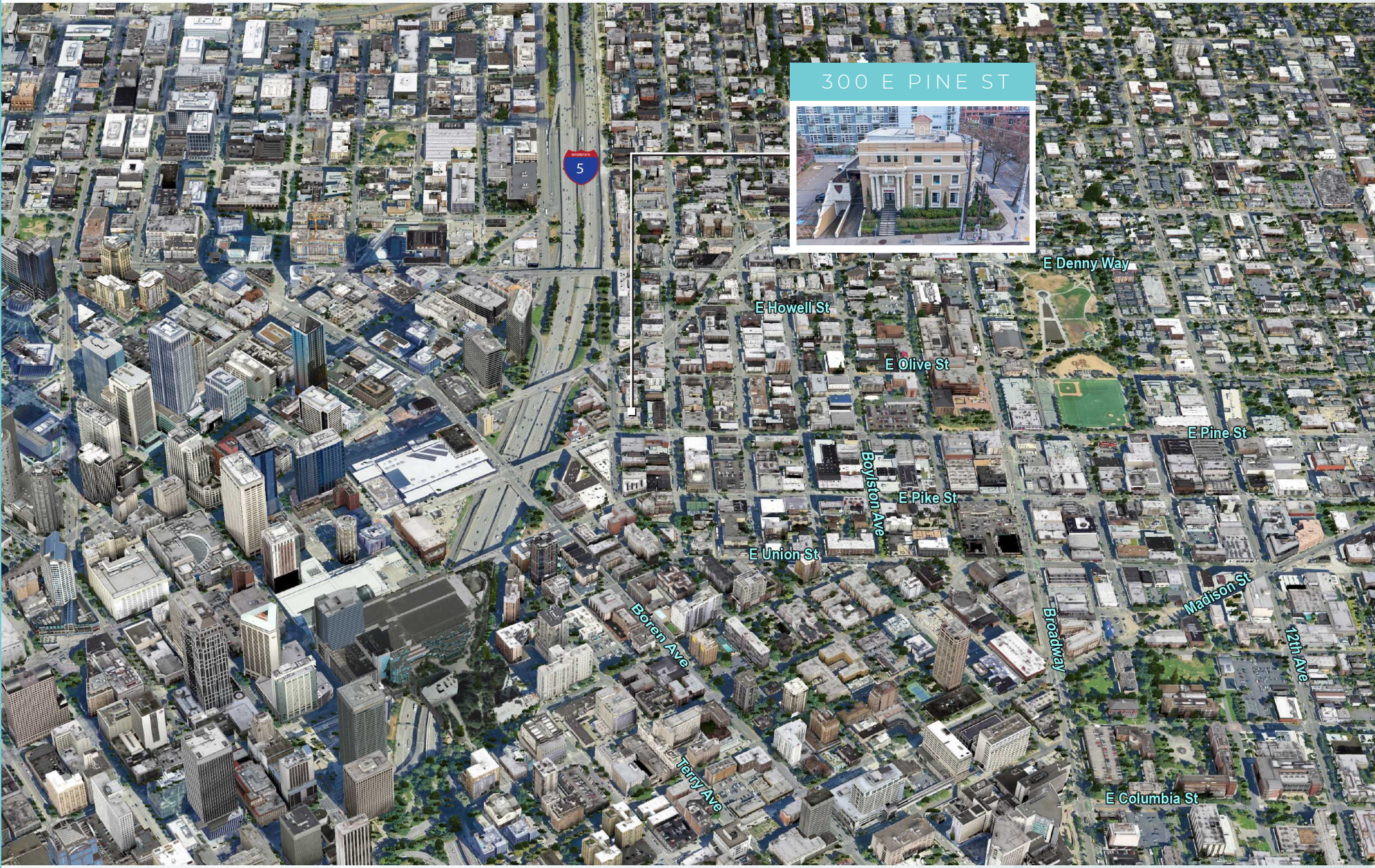
FLOOR PLAN | 2,078 SF

300
E PINE ST
SEATTLE, WASHINGTON

LOWER LEVEL



- BUILDING
- SHARED
- OFFICE



AMENITIES MAP

300

E PINE ST
SEATTLE, WASHINGTON

300 E PINE ST



99

WALK SCORE



98

TRANSIT SCORE



71

BIKE SCORE



300

E PINE ST
SEATTLE, WASHINGTON

JEFF MURPHY
LAWYERS

CHARLIE FARRA
Senior Managing Director
206.999.2928
charlie.farra@nrmk.com

CAVAN O'KEEFE
Senior Managing Director
206.395.2903
cavan.okeefe@nrmk.com

ED MAO
Associate
310.694.7191
edward.mao@nrmk.com

NEWMARK

The distributor of this communication is performing acts for which a real estate license is required. The information contained herein has been obtained from sources deemed reliable but has not been verified and no guarantee, warranty or representation, either express or implied, is made with respect to such information. Terms of sale or lease and availability are subject to change or withdrawal without notice. MP23-077 • 10/23