

FOR SUBLEASE

# REDMOND CENTER COURT

11,881 SF (977 SF Office) | 8635 154th Ave NE, Redmond, WA



HAM INSULATION  
& SHELVING, INC.  
REDMOND, WA  
425-881-2599  
QUALITY

**NEWMARK**

**BLAKE BENTZ**  
blake.bentz@nmrk.com  
425-362-1391

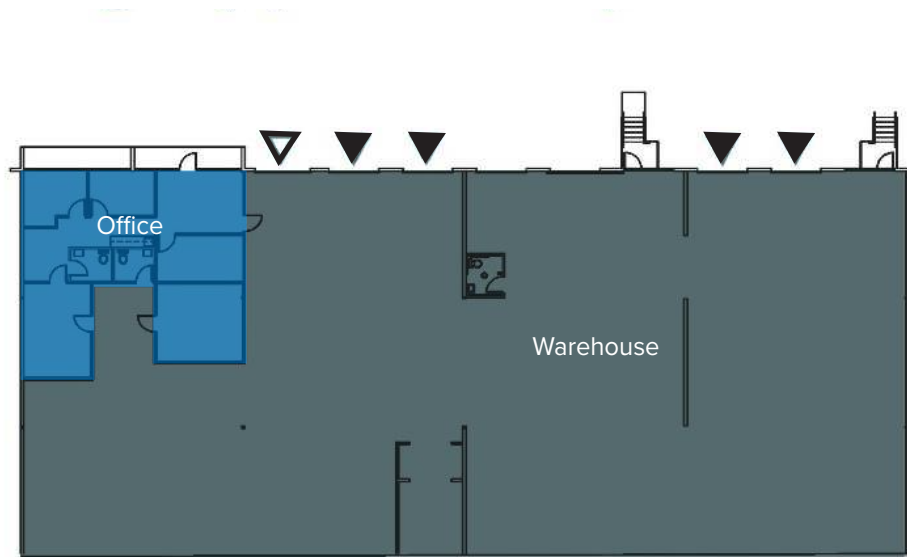
CBRE

FOR SUBLEASE

# REDMOND CENTER COURT

11,881 SF (977 SF Office) | 8635 154th Ave NE, Redmond, WA

## FLOOR PLAN



## BUILDING DETAILS

### ADDRESS

8635 154th Ave NE, Redmond, WA

### TOTAL SF

11,881 Total SF (977 SF Office)

### CLEAR HEIGHT

20'

### LOADING

4 Dock High Doors

1 Grade Level Door

## PROPERTY HIGHLIGHTS

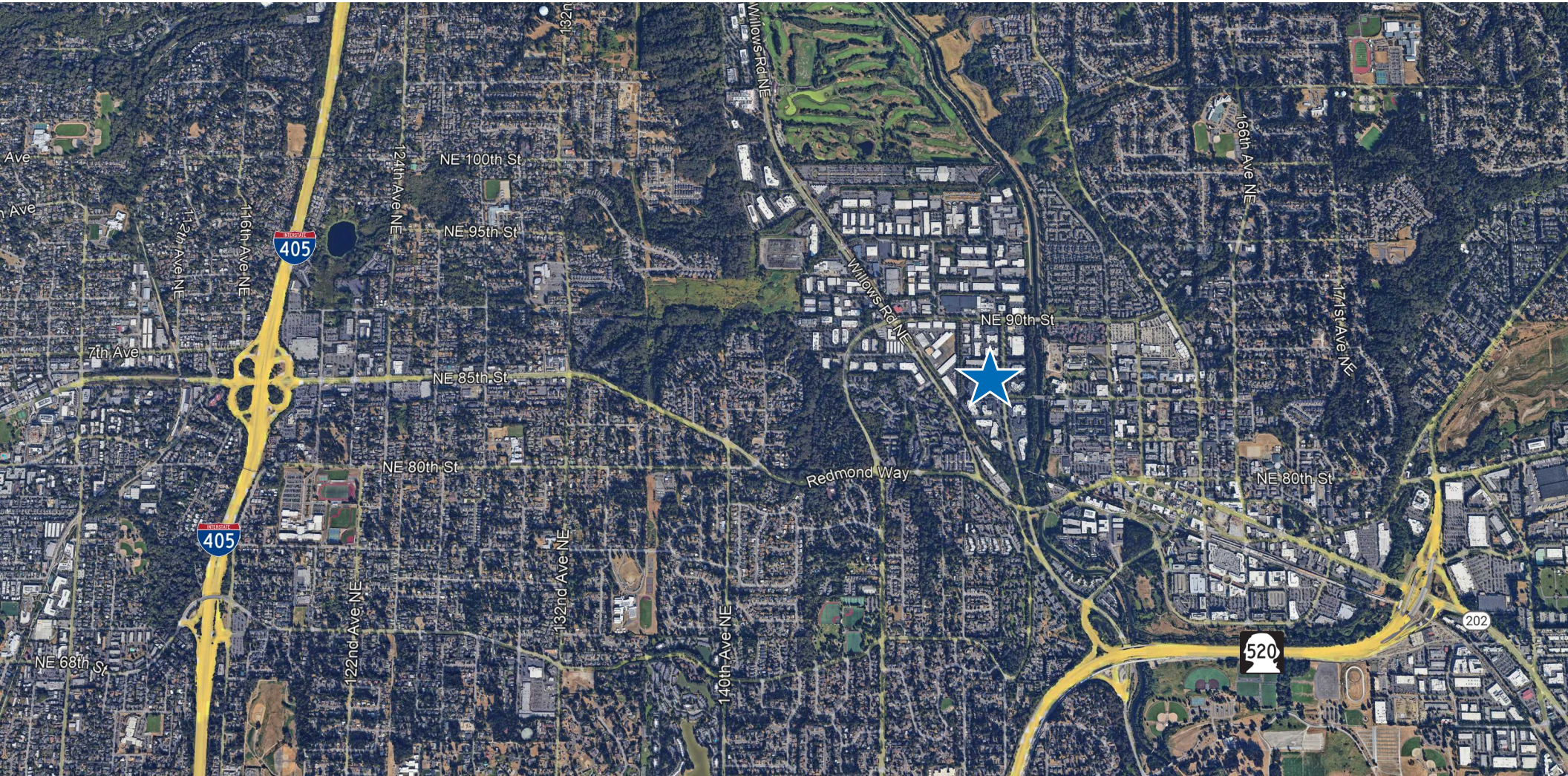
- Sublease term through July 31, 2025
- Available January 2024
- Immediate access to SR 520
- Accessibility to abundant amenities including Redmond Town Center

- ▼ Dock Door
- ▼ Grade Door

FOR SUBLEASE

# REDMOND CENTER COURT

11,881 SF (977 SF Office) | 8635 154th Ave NE, Redmond, WA



**NEWMARK**

The information contained herein has been obtained from sources deemed reliable but has not been verified and no guarantee, warranty or representation, either express or implied, is made with respect to such information. Terms of sale or lease and availability are subject to change or withdrawal without notice.