

# RETAIL/OFFICE AVAILABLE - 1,255 - 1,598 SF

1113 A ST NORTHEAST, AUBURN, WA 98002



## LOCATION INFORMATION

Building Name: The Reserve & Villas at Auburn

Street Address: 1113 A Street Northeast  
1209 A Street Northeast

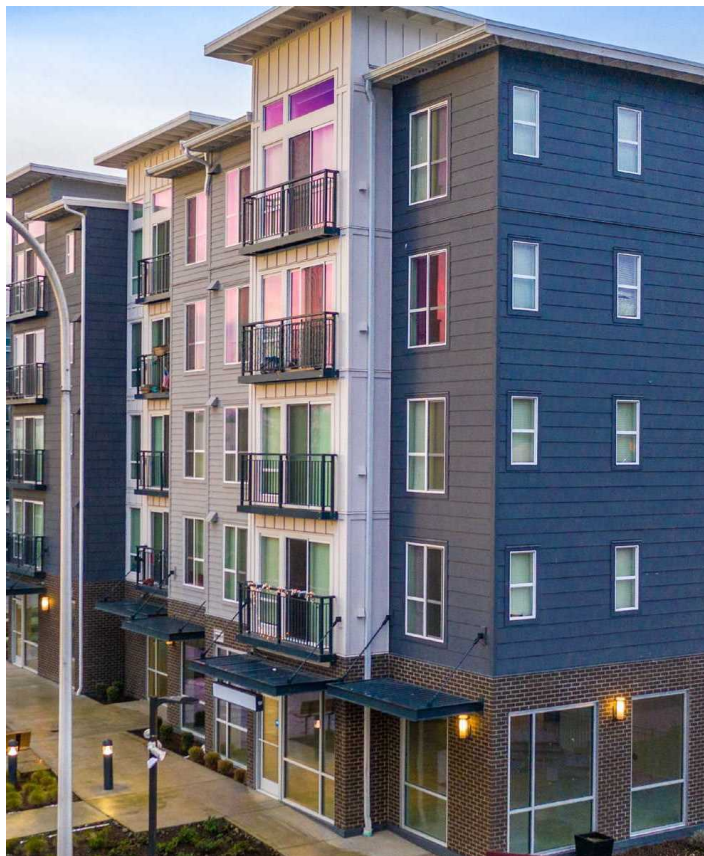
City, State, Zip: Auburn, WA 98002

County: King

Market: King County

Sub-market: Auburn

Cross Streets: A St NE & 10th St NE



## LOCATION OVERVIEW

AUBURN, WA is centrally located between Seattle and Tacoma in the heart of the Green River Valley under the shadow of Mt. Rainier. This is the center of the largest industrial complex in the northwest, with two rail roads and the close proximity to the Seattle and Tacoma ports. Auburn is proud of their vibrant and sustainable business environment with continued job expansion and above average retail growth.

## PROPERTY DESCRIPTION

There are two spaces available in this Mixed Use complex. 1,255 - 1,598 SF available could be used for Retail or Office use. Easy access to SR-167 & SR-18. Walking distance to many amenities. Near Emerald Downs, LA Fitness, and so much more!

## AVAILABLE SUITES

Suite 1113: 1,255 SF \$13.00/SF/YR + NNN  
Suite 1209: 1,598 SF \$13.00/SF/YR + NNN

**KELLER WILLIAMS COMMERCIAL**  
1011 E Main, Suite 420  
Puyallup, WA 98372



Each Office Independently Owned and Operated

**GLORIA FLETCHER**  
Senior Commercial Broker  
O: (253) 840-5574  
C: (253) 223-9176  
gfletcher@kw.com

**RACHEL CORP**  
Director of Commercial Real Estate  
O: (253) 840-5574  
C: (253) 686-7474  
rachel.corp@kwcommercial.com

# RESERVE AT AUBURN

1113 A STREET NORTHEAST



## KELLER WILLIAMS COMMERCIAL

1011 E Main, Suite 420  
Puyallup, WA 98372



Each Office Independently Owned and Operated

## GLORIA FLETCHER

Senior Commercial Broker  
O: (253) 840-5574  
C: (253) 223-9176  
gfletcher@kw.com

## RACHEL CORP

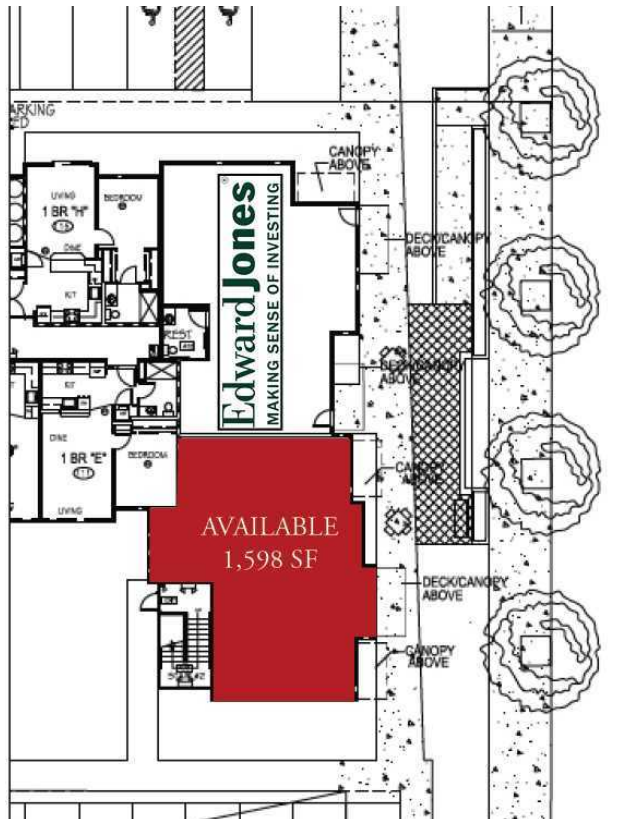
Director of Commercial Real Estate  
O: (253) 840-5574  
C: (253) 686-7474  
rachel.corp@kwcommercial.com

# VILLAS AT AUBURN

1113 A STREET NORTHEAST



VILLAS AT AUBURN



## KELLER WILLIAMS COMMERCIAL

1011 E Main, Suite 420  
Puyallup, WA 98372



Each Office Independently Owned and Operated

## GLORIA FLETCHER

Senior Commercial Broker  
O: (253) 840-5574  
C: (253) 223-9176  
gfletcher@kw.com

## RACHEL CORP

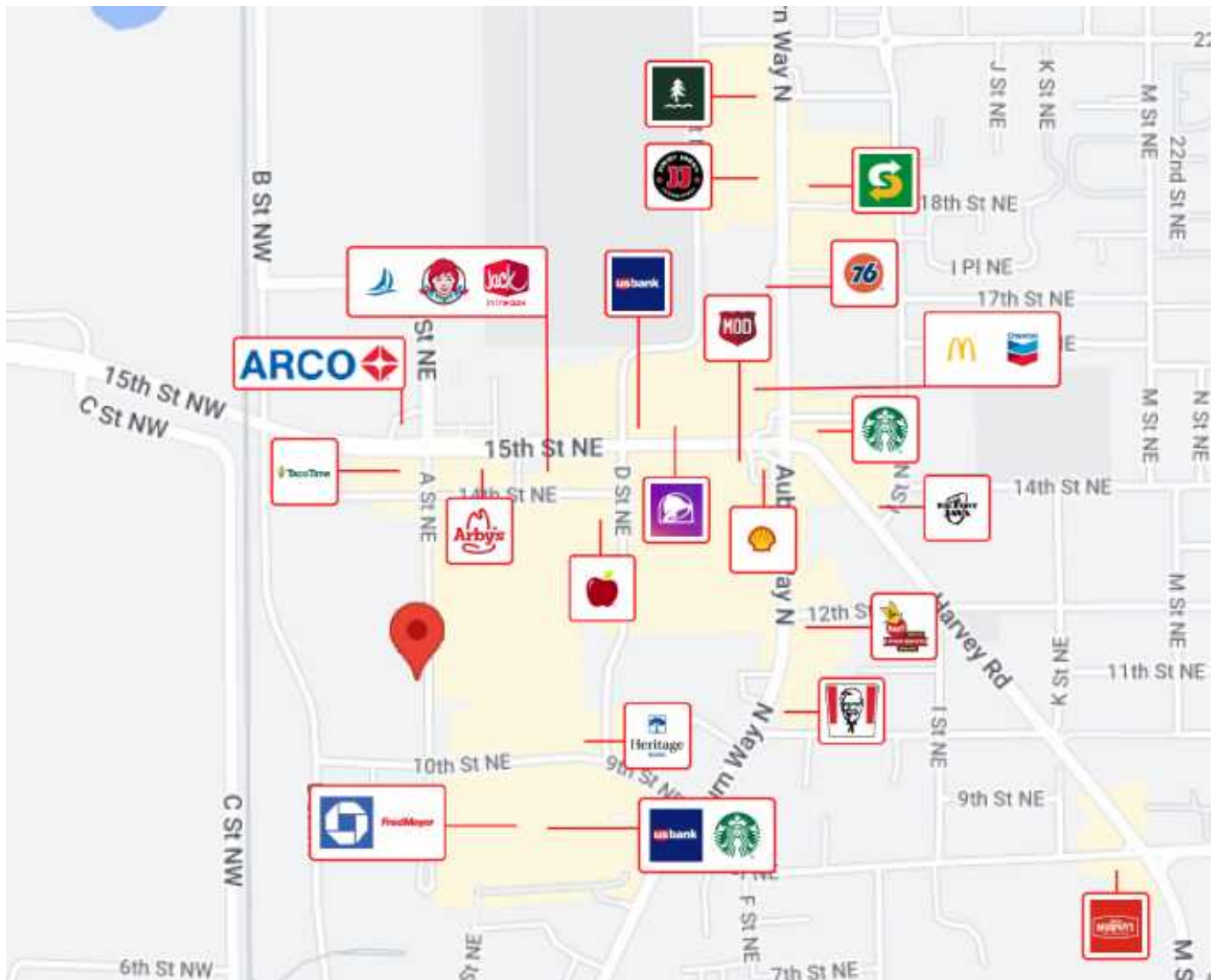
Director of Commercial Real Estate  
O: (253) 840-5574  
C: (253) 686-7474  
rachel.corp@kwcommercial.com

# RESERVE & VILLAS AT AUBURN

1113 A STREET NORTHEAST



**AVAILABLE SPACES**



**KELLER WILLIAMS COMMERCIAL**  
 1011 E Main, Suite 420  
 Puyallup, WA 98372



**GLORIA FLETCHER**  
 Senior Commercial Broker  
 O: (253) 840-5574  
 C: (253) 223-9176  
 gfletcher@kw.com

**RACHEL CORP**  
 Director of Commercial Real Estate  
 O: (253) 840-5574  
 C: (253) 686-7474  
 rachel.corp@kwcommercial.com

Each Office Independently Owned and Operated

# DISCLAIMER

1113 A STREET NORTHEAST



All materials and information received or derived from KW Commercial its directors, officers, agents, advisors, affiliates and/or any third party sources are provided without representation or warranty as to completeness, veracity, or accuracy, condition of the property, compliance or lack of compliance with applicable governmental requirements, developability or suitability, financial performance of the property, projected financial performance of the property for any party's intended use or any and all other matters.

Neither KW Commercial its directors, officers, agents, advisors, or affiliates makes any representation or warranty, express or implied, as to accuracy or completeness of the any materials or information provided, derived, or received. Materials and information from any source, whether written or verbal, that may be furnished for review are not a substitute for a party's active conduct of its own due diligence to determine these and other matters of significance to such party. KW Commercial will not investigate or verify any such matters or conduct due diligence for a party unless otherwise agreed in writing.

EACH PARTY SHALL CONDUCT ITS OWN INDEPENDENT INVESTIGATION AND DUE DILIGENCE.

Any party contemplating or under contract or in escrow for a transaction is urged to verify all information and to conduct their own inspections and investigations including through appropriate third-party independent professionals selected by such party. All financial data should be verified by the party including by obtaining and reading applicable documents and reports and consulting appropriate independent professionals. KW Commercial makes no warranties and/or representations regarding the veracity, completeness, or relevance of any financial data or assumptions. KW Commercial does not serve as a financial advisor to any party regarding any proposed transaction.

All data and assumptions regarding financial performance, including that used for financial modeling purposes, may differ from actual data or performance. Any estimates of market rents and/or projected rents that may be provided to a party do not necessarily mean that rents can be established at or increased to that level. Parties must evaluate any applicable contractual and governmental limitations as well as market conditions, vacancy factors and other issues in order to determine rents from or for the property. Legal questions should be discussed by the party with an attorney. Tax questions should be discussed by the party with a certified public accountant or tax attorney. Title questions should be discussed by the party with a title officer or attorney. Questions regarding the condition of the property and whether the property complies with applicable governmental requirements should be discussed by the party with appropriate engineers, architects, contractors, other consultants, and governmental agencies. All properties and services are marketed by KW Commercial in compliance with all applicable fair housing and equal opportunity laws.

## KELLER WILLIAMS COMMERCIAL

1011 E Main, Suite 420  
Puyallup, WA 98372



Each Office Independently Owned and Operated

## PRESENTED BY:

### GLORIA FLETCHER

Senior Commercial Broker

O: (253) 840-5574

C: (253) 223-9176

gfletcher@kw.com

### RACHEL CORP

Director of Commercial Real Estate

O: (253) 840-5574

C: (253) 686-7474

rachel.corp@kwcommercial.com

The calculations and data presented are deemed to be accurate, but not guaranteed. They are intended for the purpose of illustrative projections and analysis. The information provided is not intended to replace or serve as substitute for any legal, accounting, investment, real estate, tax or other professional advice, consultation or service. The user of this software should consult with a professional in the respective legal, accounting, tax or other professional area before making any decisions.