

1000 N NORTHLAKE WAY

TWO FLOORS | 21,772 RSF



NEWMARK

CAVAN O'KEEFE
Senior Managing Director
206.604.7921
cavan.okeefe@nrmk.com

BRODY O'KEEFE
Director
206.453.1463
brody.okeefe@nrmk.com

BUILDING HIGHLIGHTS

- Rare standalone building in the heart of Fremont with high exposure signage opportunity.
- Plug & Play potential with furniture that can be included.
- Located on the Burke-Gilman Trail with an on-site shower. Great walkability to surrounding restaurants, neighborhood amenities and waterfront parks.
- Open layout with breakout meeting rooms and private offices. Recently updated high-end finishes.
- 3 parking stalls included in lease with additional month-to-month availability in adjacent lot.
- Fibre optic cable into the building
- Zonal HVAC control



1000 N NORTHLAKE WAY





AVAILABILITIES

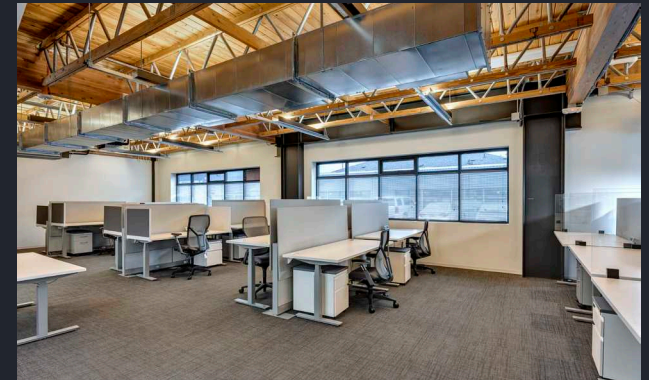
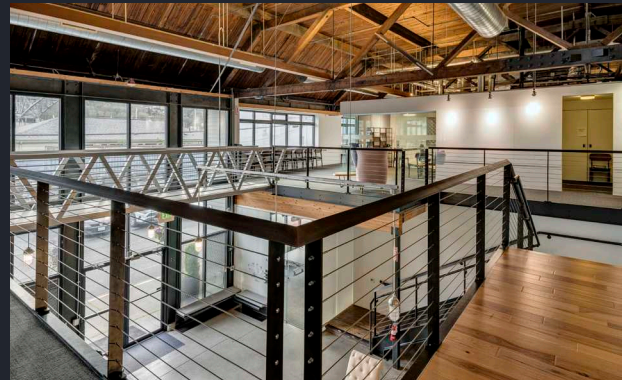
Floors 1 and 2

Floors must be leased together

21,772 RSF

Available September 1, 2024

1000 N NORTHLAKE WAY



AMENITIES

FOOD & DRINK

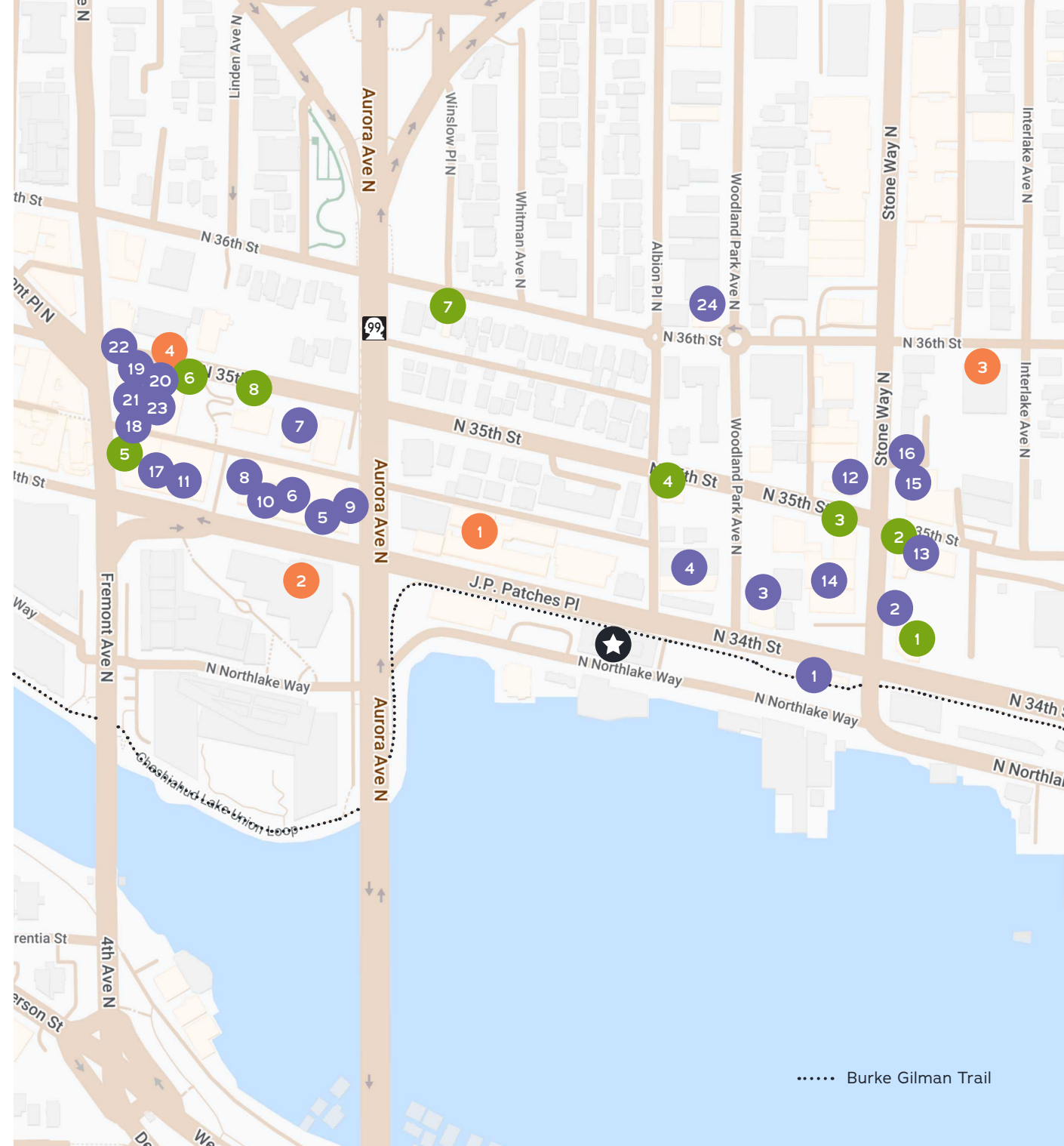
1. Mini Bar Seattle
2. Livbud Cafe
3. The Dock Sports Bar & Grill
4. Fremont Brewing's Urban Beer Garden
5. Cafe Turko
6. Evergreens
7. Just Burgers Fremont
8. Tivoli
9. Milstead & Co.
10. Just Poke Fremont
11. Schilling Cider House
12. Pacific Inn Pub
13. Fiasco
14. I Love Teriyaki
15. The Whale Wins
16. Joule
17. Eve Fremont
18. SabbVerr Thai Bar & Grill
19. Lazy Cow Bakery
20. CrackleMi Cafe- Fremont
21. Lucky's Pho
22. Palmi Korean Cuisine & Teriyaki
23. Esters Enoteca
24. My Friend Derek's

RETAIL

1. Brooks Trailhead
2. Brooks Sports Inc
3. Davidson Custom Bicycles
4. Urban Earth Nursery
5. Dusty Strings Music Store & School
6. Phantom Quartz
7. 3Xink
8. Reality Relics (Books)

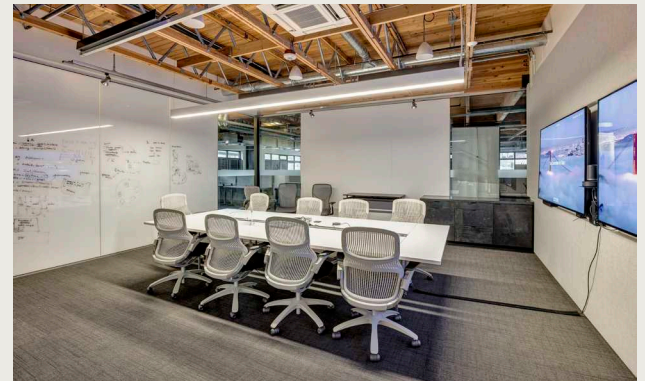
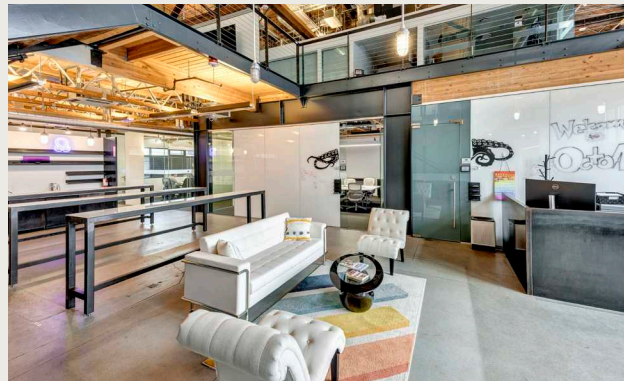
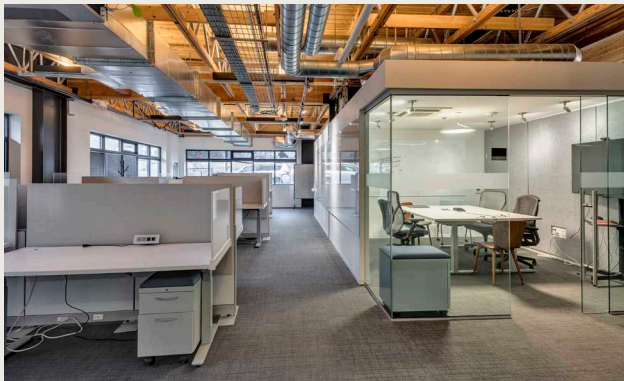
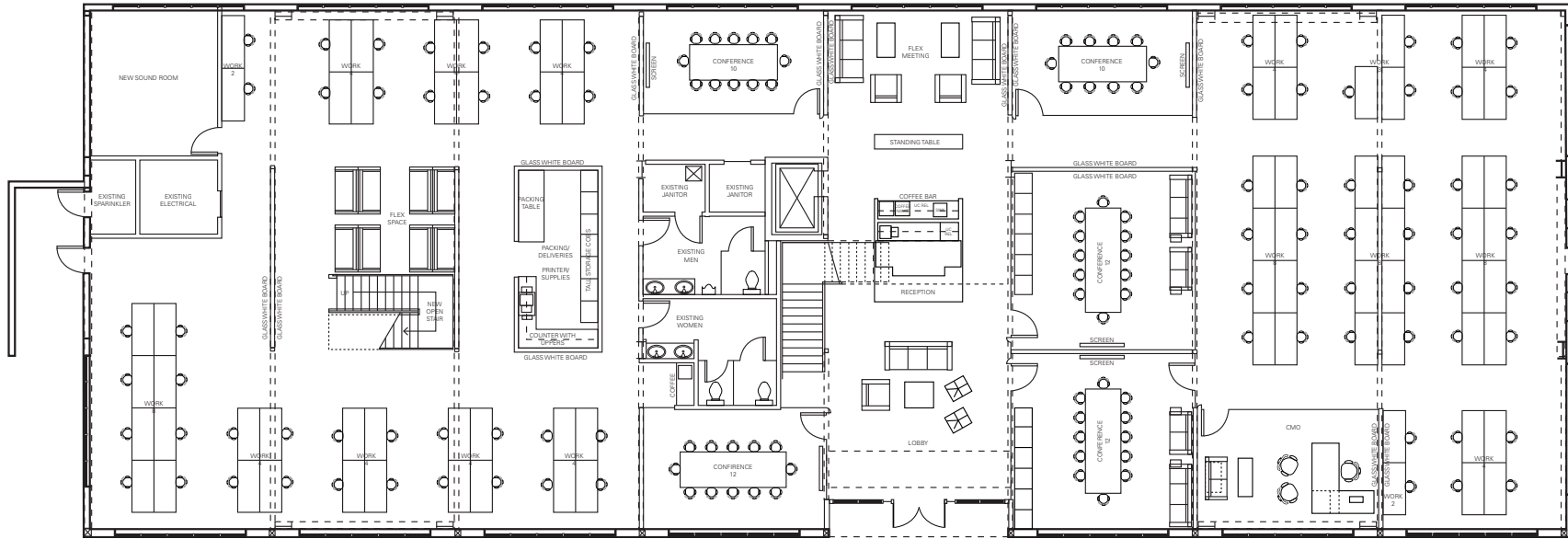
FITNESS

1. Fremont Health Club
2. Anytime Fitness
3. Seattle Bouldering Project, Fremont
4. flux & flow bodywork



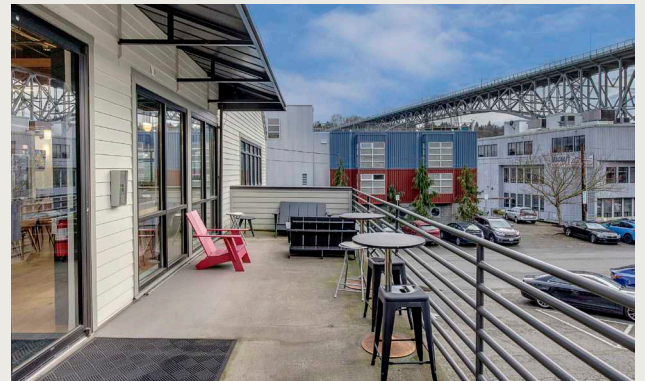
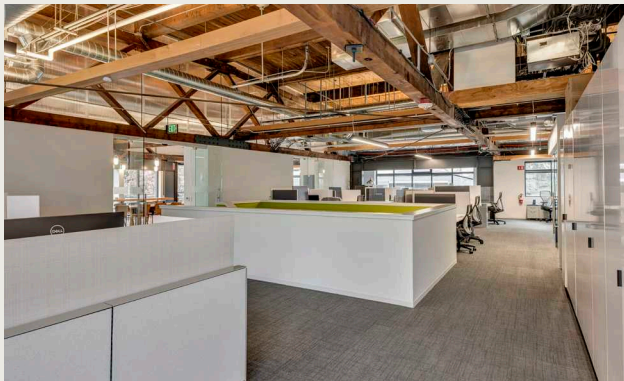
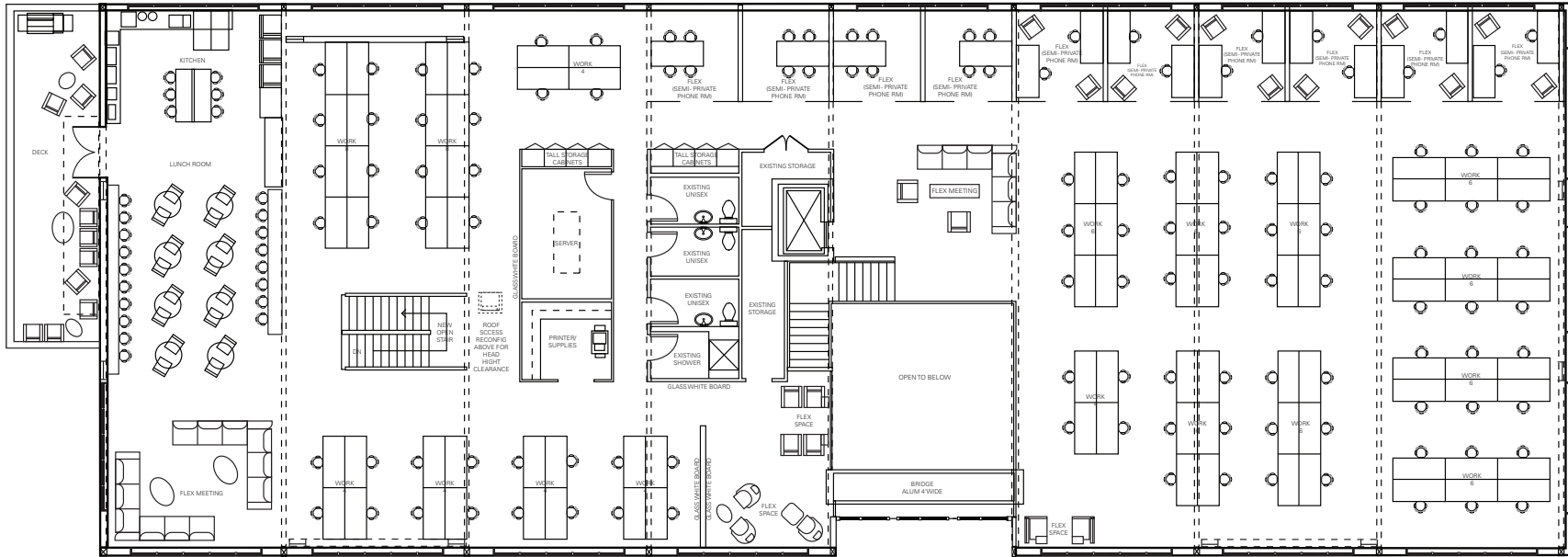
FLOOR 1

10,886 SF | Available September 1, 2024 | Floors 1 & 2 must be leased together



FLOOR 2

10,886 SF | Available September 1, 2024 | Floors 1 & 2 must be leased together





1000 N NORTHLAKE WAY

CAVAN O'KEEFE
Senior Managing Director
206.604.7921
cavan.okeefe@nmrk.com

BRODY O'KEEFE
Director
206.453.1463
brody.okeefe@nmrk.com

NEWMARK

The distributor of this communication is performing acts for which a real estate license is required. The information contained herein has been obtained from sources deemed reliable but has not been verified and no guarantee, warranty or representation, either express or implied, is made with respect to such information. Terms of sale or lease and availability are subject to change or withdrawal without notice.