

FOR LEASE

702 South Hill Park Dr
Puyallup, WA 98373



SOUTH HILL PARK PROFESSIONAL CENTER

Jamie Firth | Lisa Tallman

First Western Properties—Tacoma Inc. | 253.472.0404
6402 Tacoma Mall Blvd, Tacoma, WA 98409 | fwp-inc.com

AVAILABLE: PROFESSIONAL OFFICE SPACE

SUITE 202 | ± 474 SF | \$22.00 PSF

SUITE 203 | ± 3,082 SF | \$22.00 PSF

SUITE 205 | ± 631 SF | \$22.00 PSF



- NNN: \$9.94 PSF
- Medical, office, professional, and service retail uses
- Excellent access with abundant parking
- Monument and building signage available
- Close proximity to Good Samaritan Hospital
- Adjacent to South Hill Mall and SR 512 interchange
- Close access to SR 512 and Interstate 5 exchange

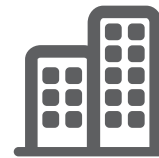
SUMMARY



Population



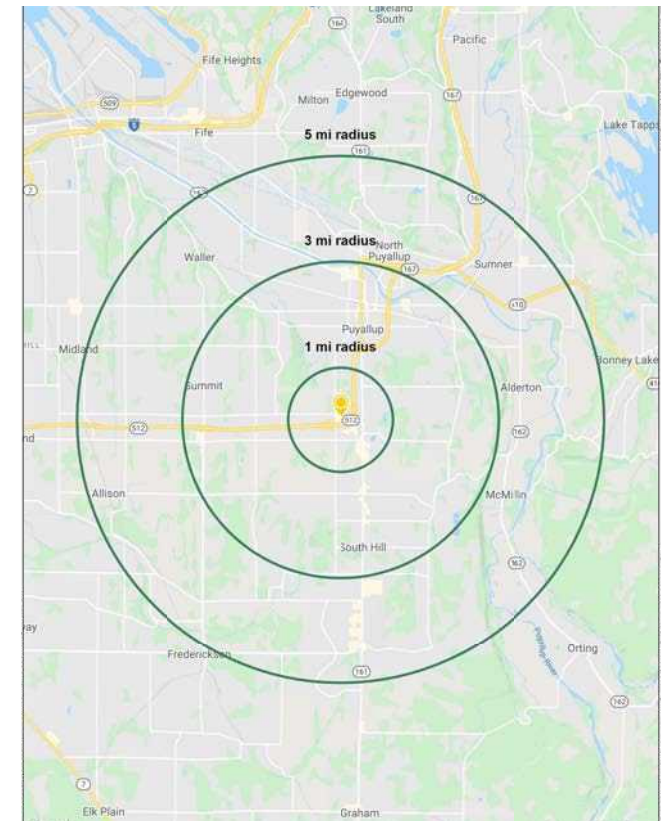
Average HH Income

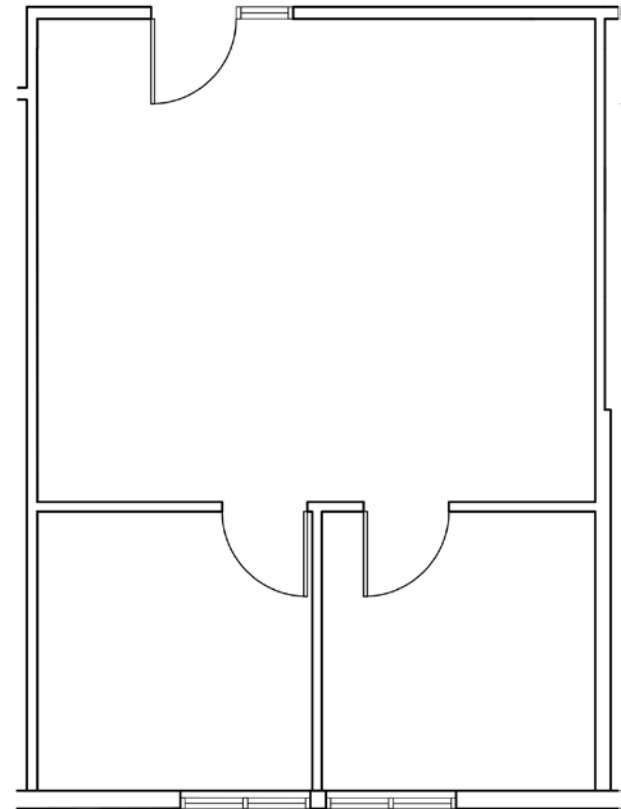
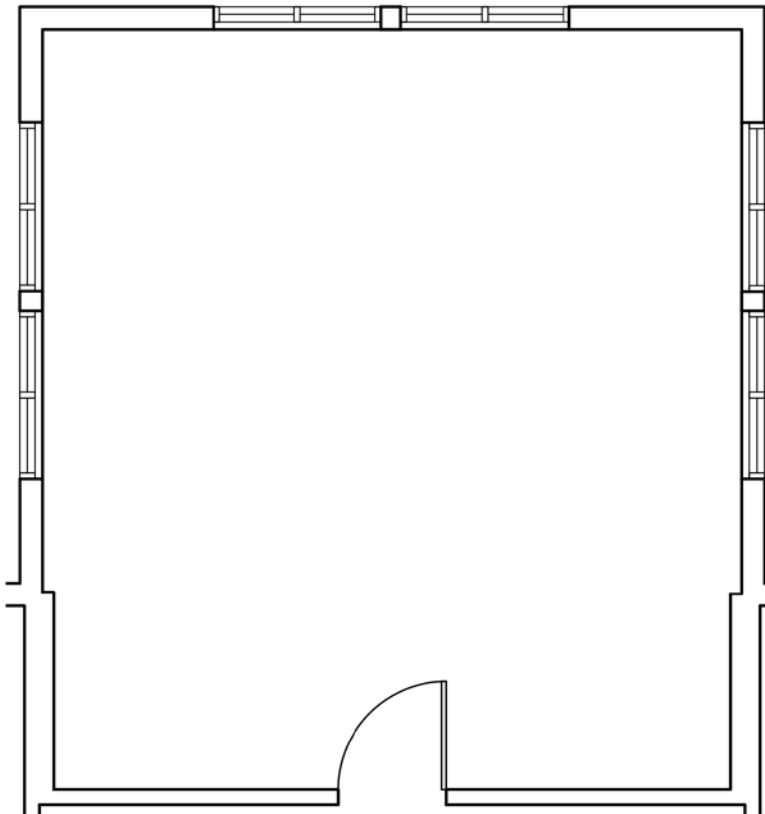


Daytime Population

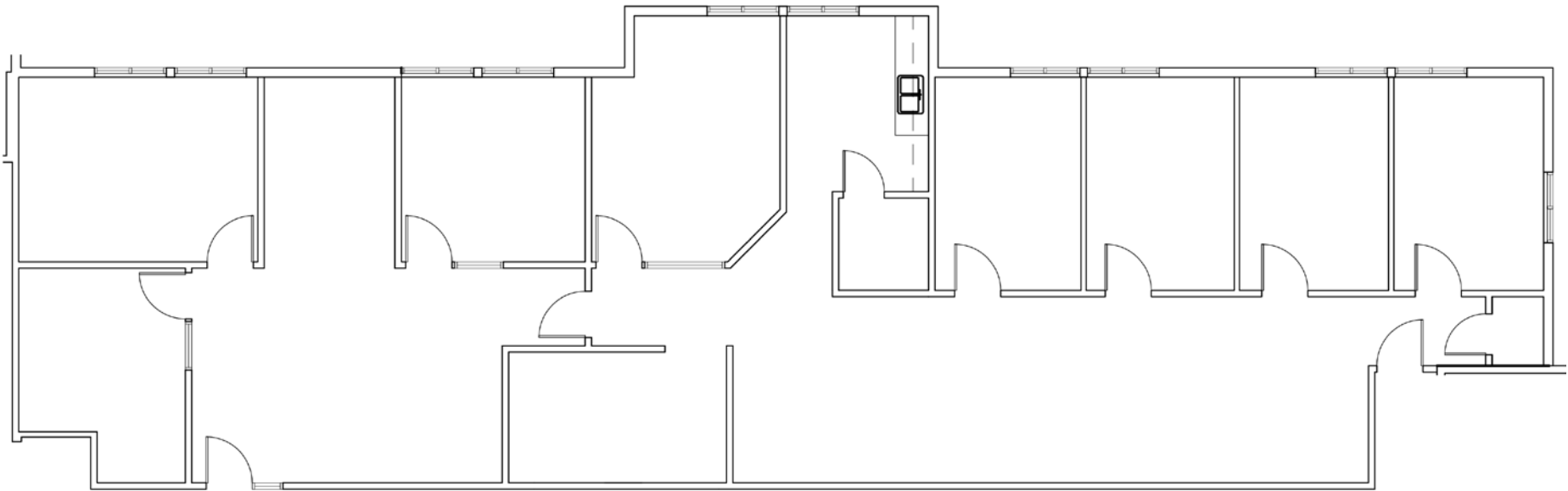
Regis - 2023

	Population	Average HH Income	Daytime Population
Mile 1	10,417	\$92,635	5,767
Mile 3	90,631	\$122,208	28,551
Mile 5	178,753	\$125,622	51,219





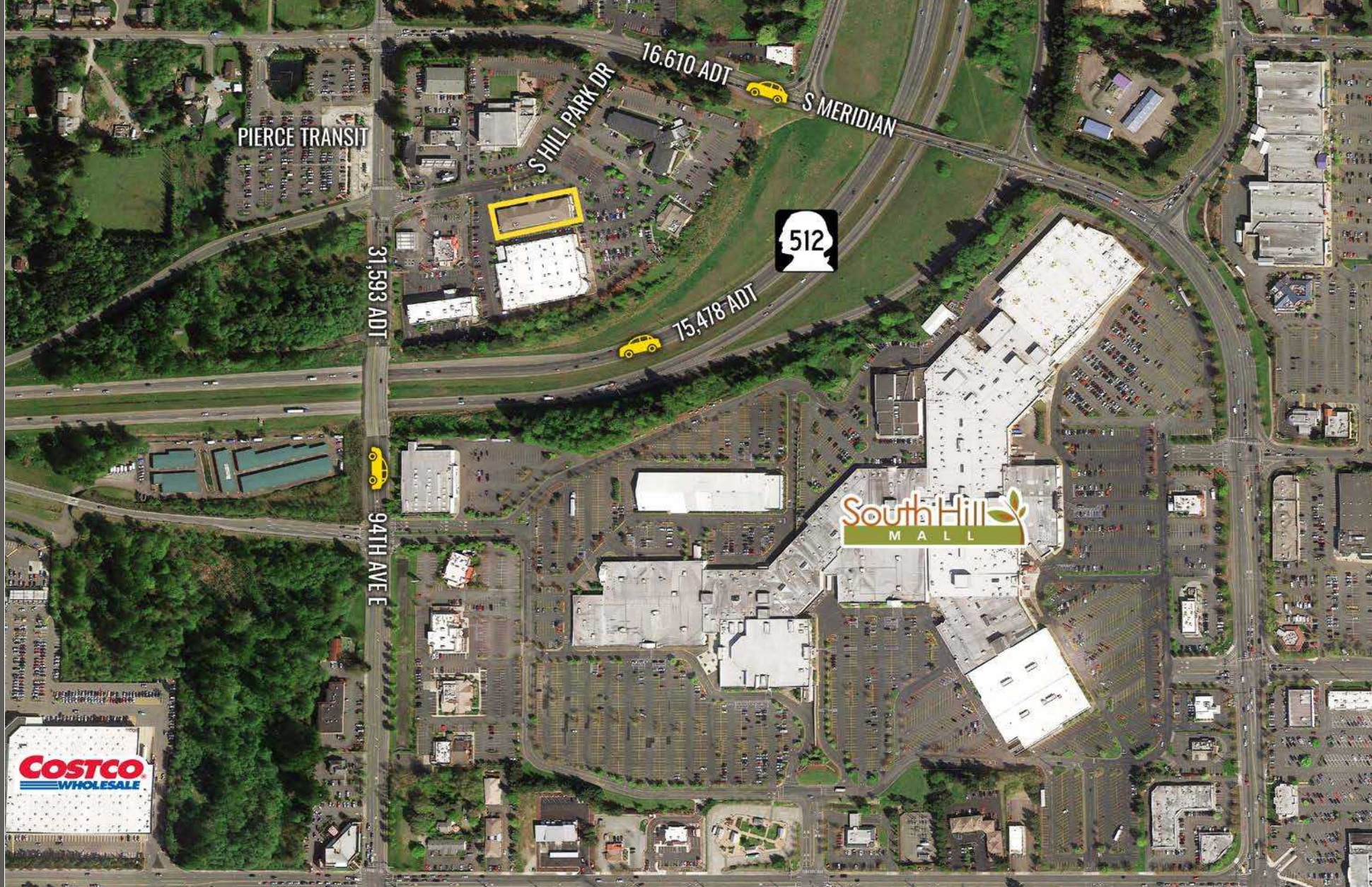
SUITE 203



LOCATION AERIAL



LOCATION DETAILS



Located Moments from SR 512



Close Proximity to the South Hill Mall



31,596 ADT
94th Ave. E




84,664 ADT
SR 512

TACOMA | KIRKLAND | PORTLAND | SEATTLE


RELATIONSHIP FOCUSED. RESULTS DRIVEN.


JAMIE FIRTH

 253.284.3649

 jamie@firstwesternproperties.com

LISA TALLMAN

 253.471.5504

 lisa@firstwesternproperties.com



First Western Properties—Tacoma Inc. | 253.472.0404
6402 Tacoma Mall Blvd, Tacoma, WA 98409 | fwp-inc.com

© First Western Properties, Inc. DISCLAIMER: The above information has been secured from sources believed to be reliable, however, no representations are made to its accuracy. Prospective tenants or buyers should consult their professional advisors and conduct their own independent investigation. Properties are subject to change in price and/or availability without notice.