

1400 5th Avenue

Seattle WA 98101



6,906 SF

Restaurant space available
at a highly visible corner location
in the heart of downtown Seattle



WCCR
West Coast Commercial Realty

1400 5th Avenue

Seattle WA 98101

THE OPPORTUNITY:



Former Specialty's Bakery space for lease in the heart of Downtown Seattle's Central Business District.



Open to short-term and pop-up deals. Space offers a plethora of well-maintained equipment ready for the next tenant's use.



Conveniently located just half a block from the 5th Avenue Theatre, and adjacent to the Rainer Square Tower, this is the dot on the map for retailers to be as you are surrounded by office towers, hotels, and residents.

Specialty's
café  bakery



1400 5th Avenue

Seattle WA 98101



New data released earlier this year, shows that there are now more people living in Downtown Seattle than in 2019, — topping 100,000+ residents!

DEMOGRAPHICS



**TOTAL
POPULATION**



**TOTAL
EMPLOYEES**



**AVERAGE
HOUSEHOLD
INCOME**

1-Mile: 99,660
2-Mile: 195,485
3-Mile: 262,637
5-Mile: 377,118

1-Mile: 191,817
2-Mile: 261,042
3-Mile: 299,498
5-Mile: 435,056

1-Mile: \$123,278
2-Mile: \$128,617
3-Mile: \$136,289
5-Mile: \$136,680



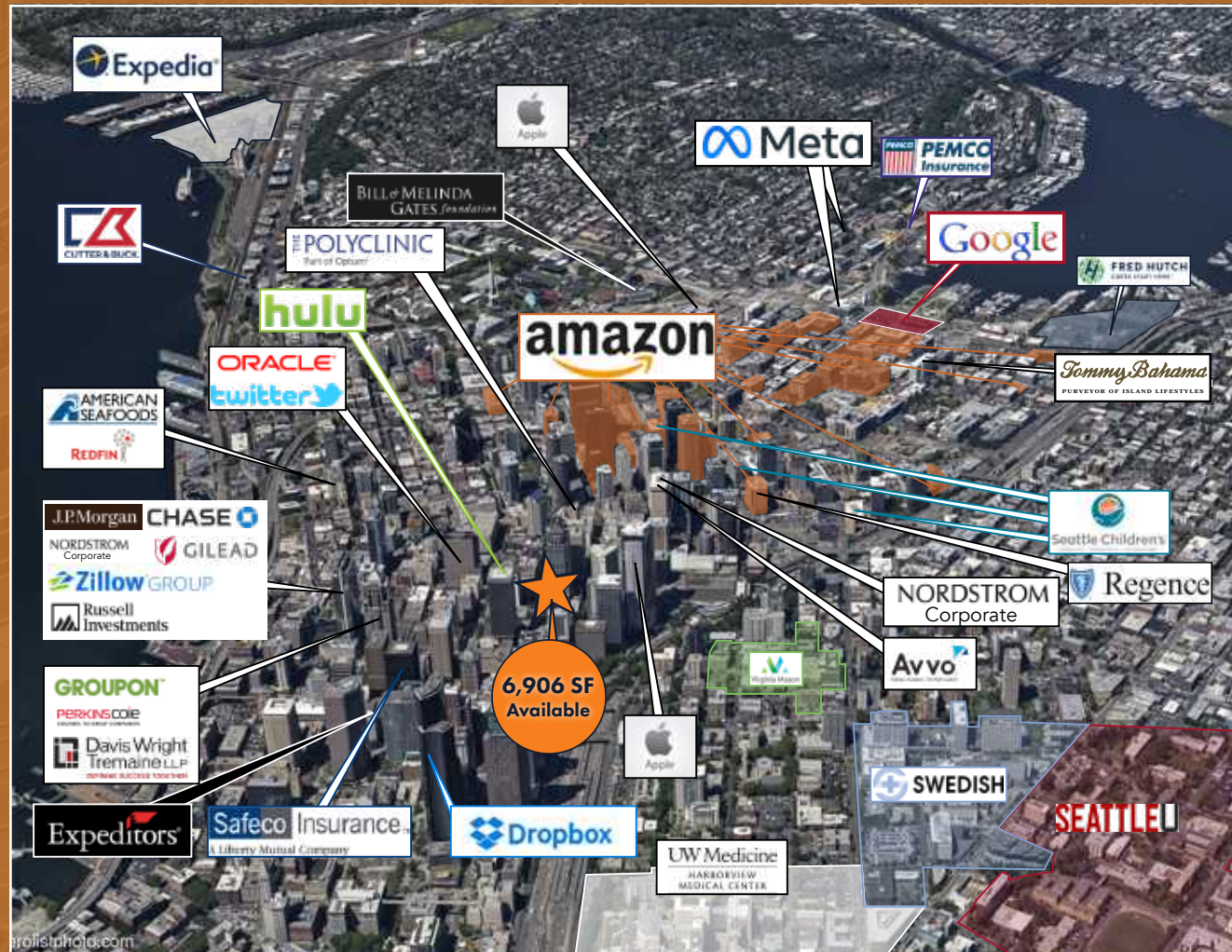
1400 5th Avenue

Seattle WA 98101



Surrounded by the region's top employers, nearly 200,000 employees are located within a 1-mile radius. Seattle has added over 48,000 tech jobs in the past 5 years, making it the fastest growing tech market in the United States.

Average household incomes within a 1-mile radius exceed \$123,000, supporting nearly 170 new street-level businesses that opened downtown in the past 12 months.



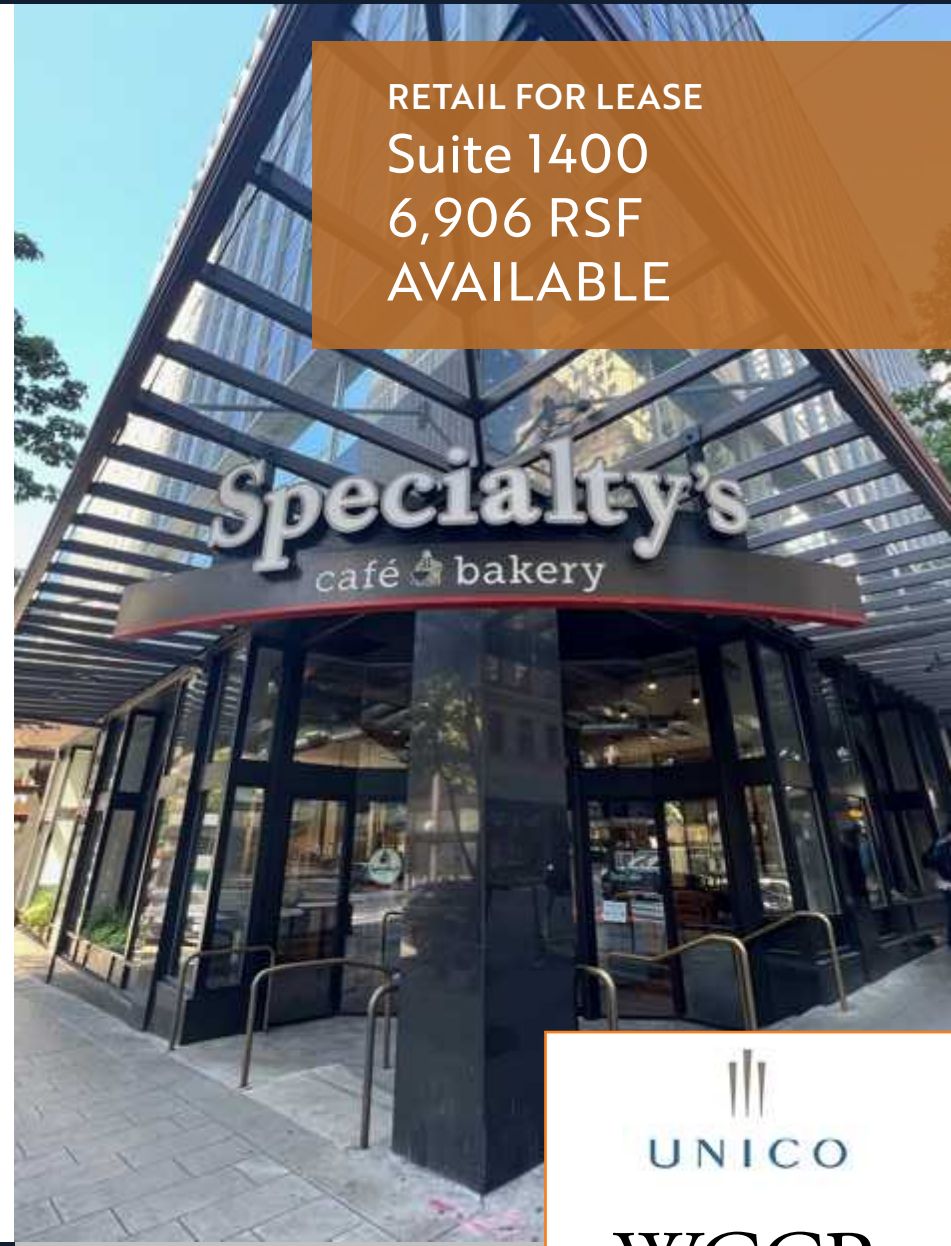
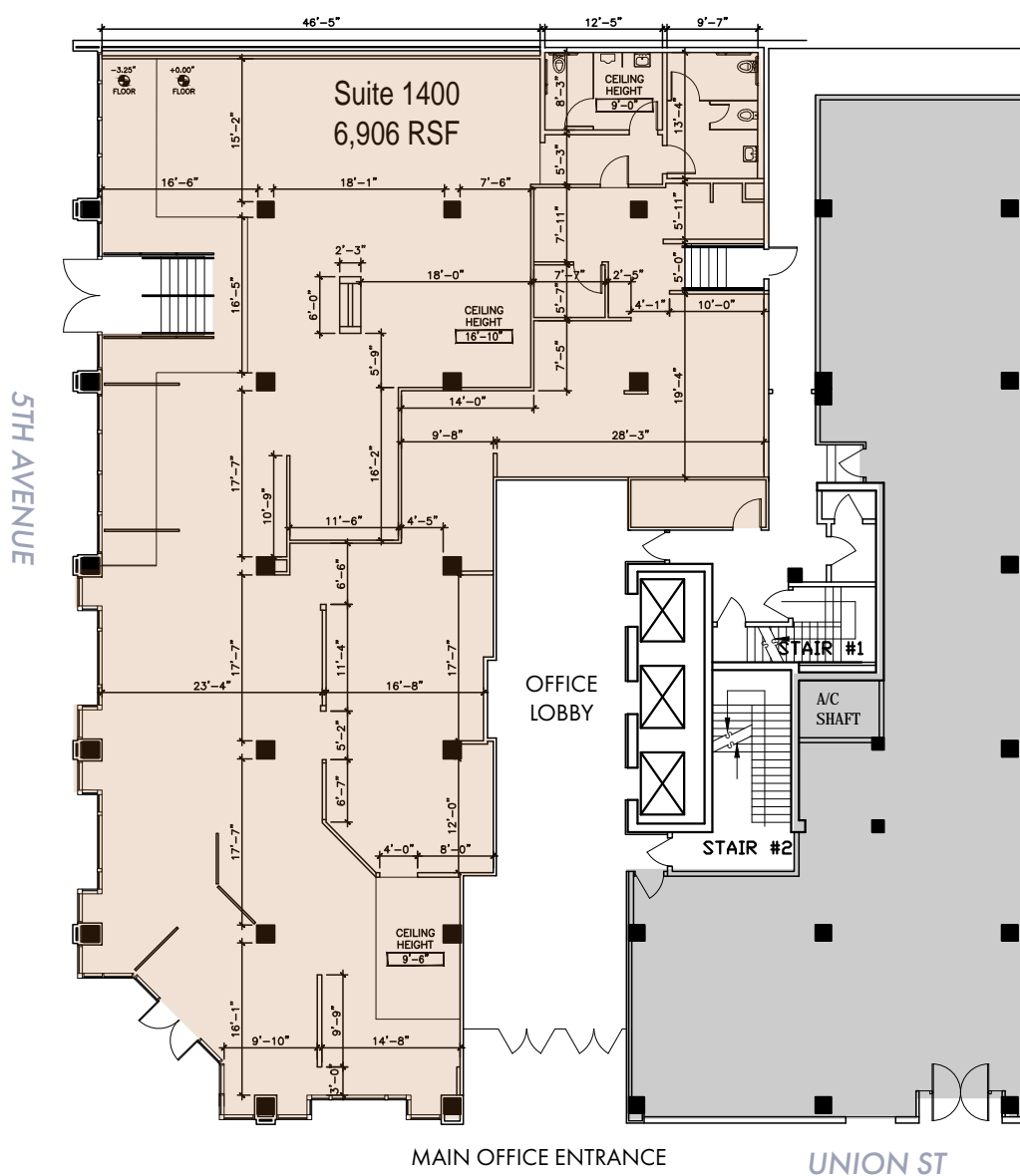
1400 5th Avenue

Seattle WA 98101



1400 5th Avenue

Seattle, WA 98101



Tiffini Connell & Avery Connell

(206) 283-5212

www.wccommercialrealty.com

DISCLAIMER: The above information has been secured from sources believed to be reliable, however, no representations are made to its accuracy. Prospective tenants or buyers should consult their professional advisors and conduct their own independent investigation. Site plan and configuration are subject to change. Properties are subject to change in price and/or availability without notice. West Coast Commercial Realty, LLC

UNICO

WCCR

West Coast Commercial Realty

INTERIOR PHOTOS

Existing Equipment Includes:

Turbo chef oven

Convection ovens

Brand new dishwasher

Walk in fridge

Walk in freezer

Warming oven

Turbo air 2 drawer oven

Type 1 Hood Capability



Tiffini Connell & Avery Connell

(206) 283-5212

www.wccommercialrealty.com

DISCLAIMER: The above information has been secured from sources believed to be reliable, however, no representations are made to its accuracy. Prospective tenants or buyers should consult their professional advisors and conduct their own independent investigation. Site plan and configuration are subject to change. Properties are subject to change in price and/or availability without notice. West Coast Commercial Realty, LLC

WCCR
West Coast Commercial Realty

UNICO