

3,000 SF AVAILABLE FOR LEASE

3601 20th St E

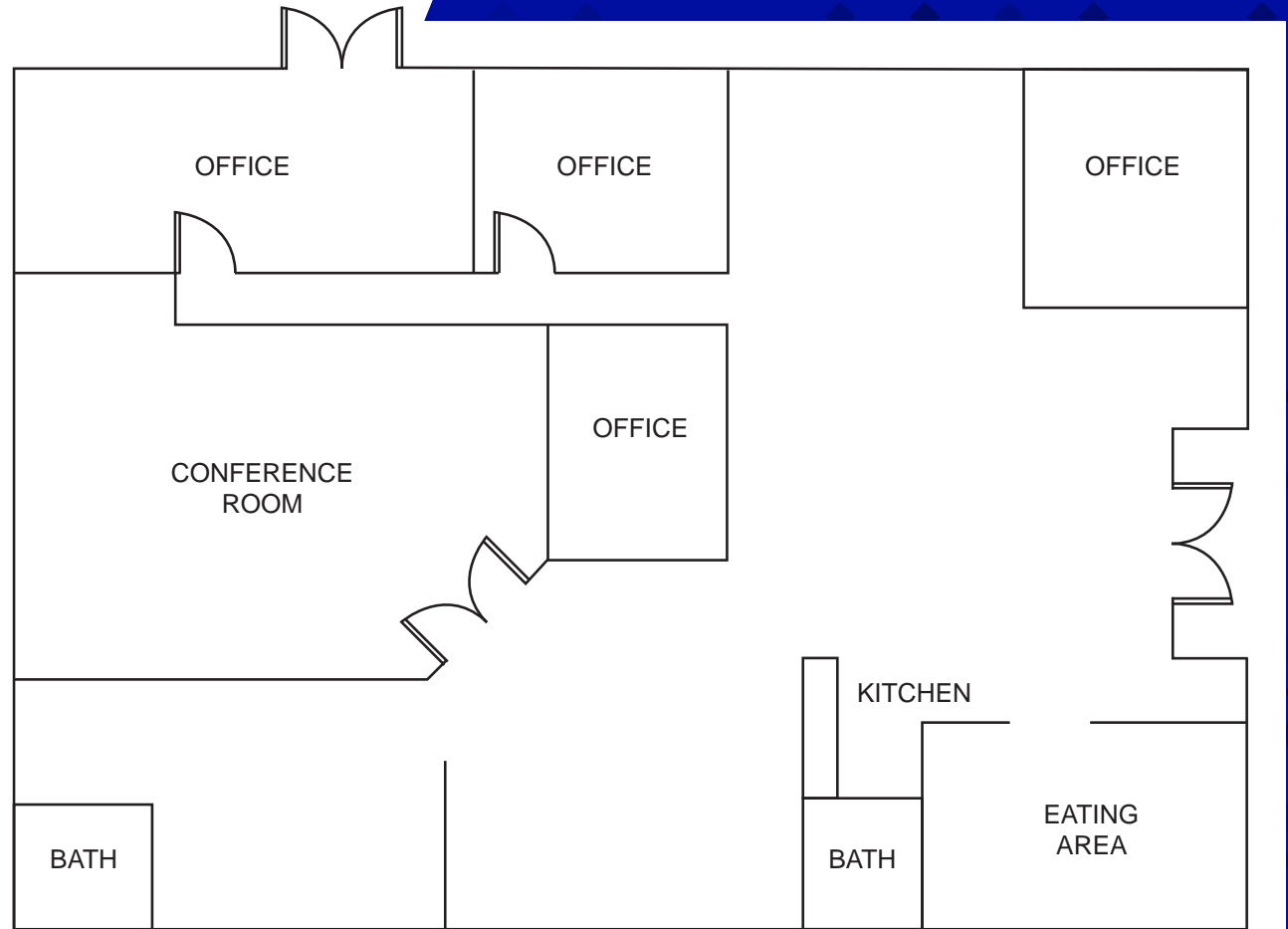
Fife, WA

- Rate: \$18.00 NNN
- Updated office build out, great for office, retail or showroom
- Signage opportunities and prominent location on 20th Street retail corridor
- 15 reserved parking stalls
- Excellent freeway access to the I-5
- 2 private restrooms



3601 20th St E

Fife, WA

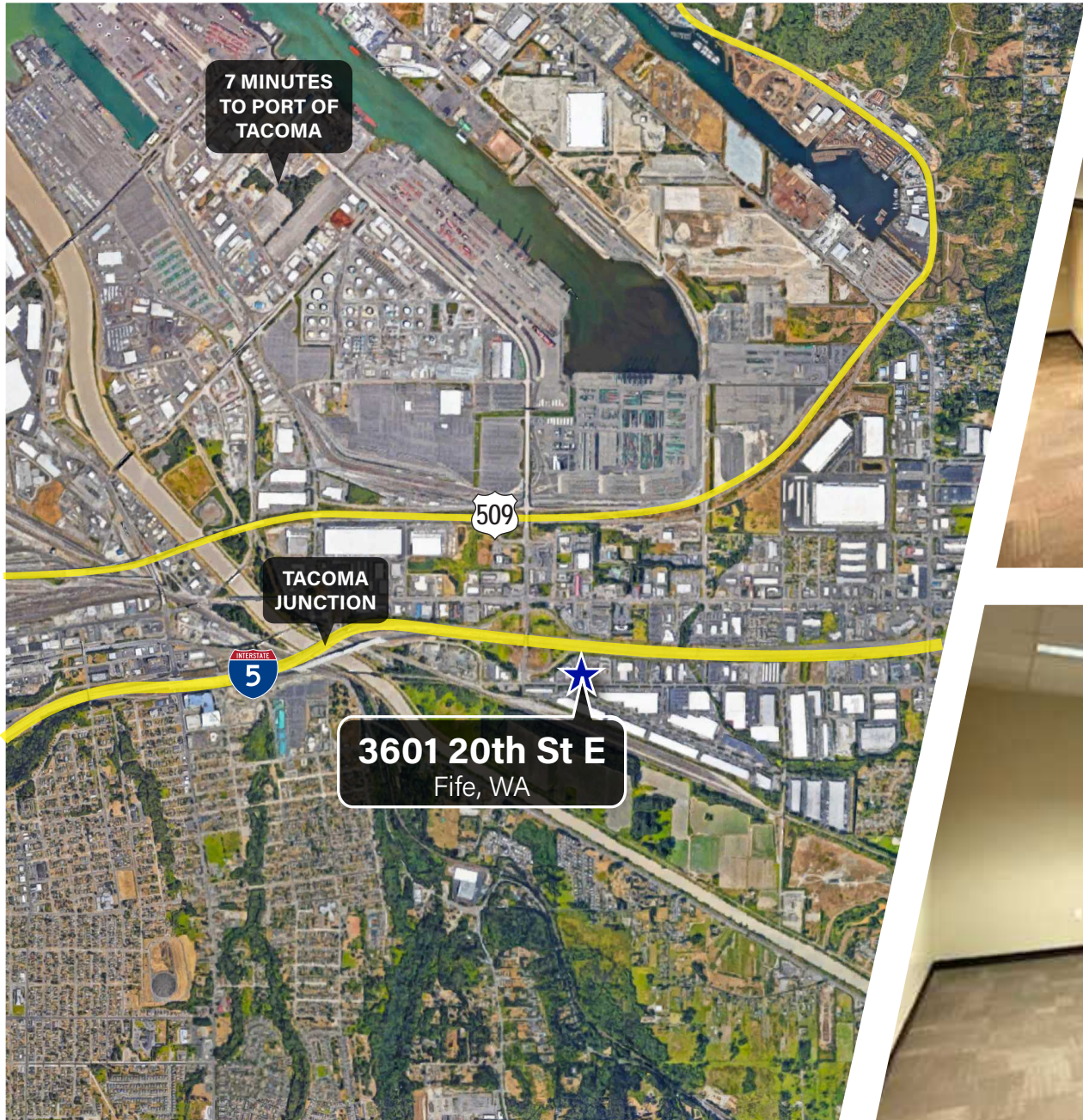


NEWMARK

MORGAN RICHEY
425.362.1409
morgan.richey@nmrk.com

BLAKE BENTZ
425.362.1391
blake.bentz@nmrk.com

CAVAN O'KEEFE
206.395.2903
cavan.okeefe@nmrk.com



NEWMARK

MORGAN RICHEY
425.362.1409
morgan.richey@nrmk.com

BLAKE BENTZ
425.362.1391
blake.bentz@nrmk.com

CAVAN O'KEEFE
206.395.2903
cavan.okeefe@nrmk.com

The distributor of this communication is performing acts for which a real estate license is required. The information contained herein has been obtained from sources deemed reliable but has not been verified and no guarantee, warranty or representation, either express or implied, is made with respect to such information. Terms of sale or lease and availability are subject to change or withdrawal without notice.