



ONE CLICK MAP



## ARCTIC CLUB HOTEL RESTAURANT SPACE

Blake Weber | Ned Whalen | Tim Weber | Don Whittles

700 3rd Ave,  
Seattle, WA 98104

First Western Properties—Tacoma Inc. | 253.472.0404  
6402 Tacoma Mall Blvd, Tacoma, WA 98409 | fwp-inc.com



# FOR LEASE

**3,000 SF ±**

Turn-Key Restaurant

**CALL FOR DETAILS**

**2,042 SF**

Former Piroshki on 3rd

**CALL FOR DETAILS**

- DO NOT DISTURB EMPLOYEES
- \$13.00 est. NNN
- Located in the heart of Downtown Seattle
- Adjacent to Seattle's first proposed supertall skyscraper
- Conveniently located near Seattle's tech start ups, popular restaurants, Lumen Field, T-Mobile Park, and the Seattle Waterfront

NAME	Arctic Club Hotel
ADDRESS	700 3rd Ave, Seattle, WA 98104
ROOMS	120
TOTAL SF	104,352 SF
TYPICAL FLOOR SF	10,435 SF
STORIES	10



## THE ARCTIC CLUB HOTEL

was formed in 1907 by successful veterans of the Klondike Gold Rush. As the story goes, the building is associated with one of the most overlooked facets to come out of the 1896 Gold Rush - the formation of a social institution for the many men who returned to Seattle after "striking it rich". Hence, the introduction of this "social club" in Seattle. For many, this provided a space for businessmen with Gold Rush or Alaska connections; and for others, it became a social gathering place in downtown Seattle for men, women and even prominent figures throughout history.

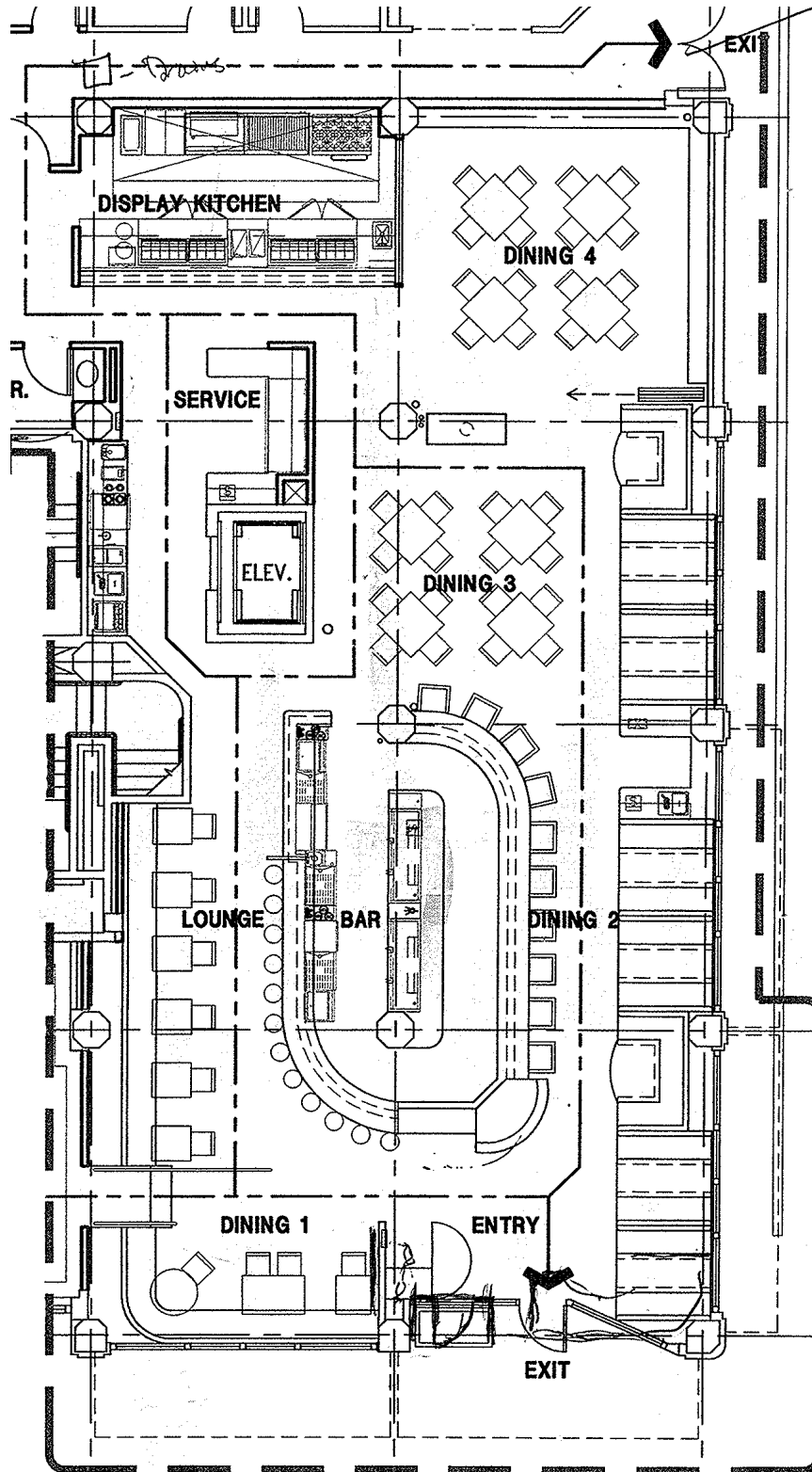


# RESTAURANT PHOTOS

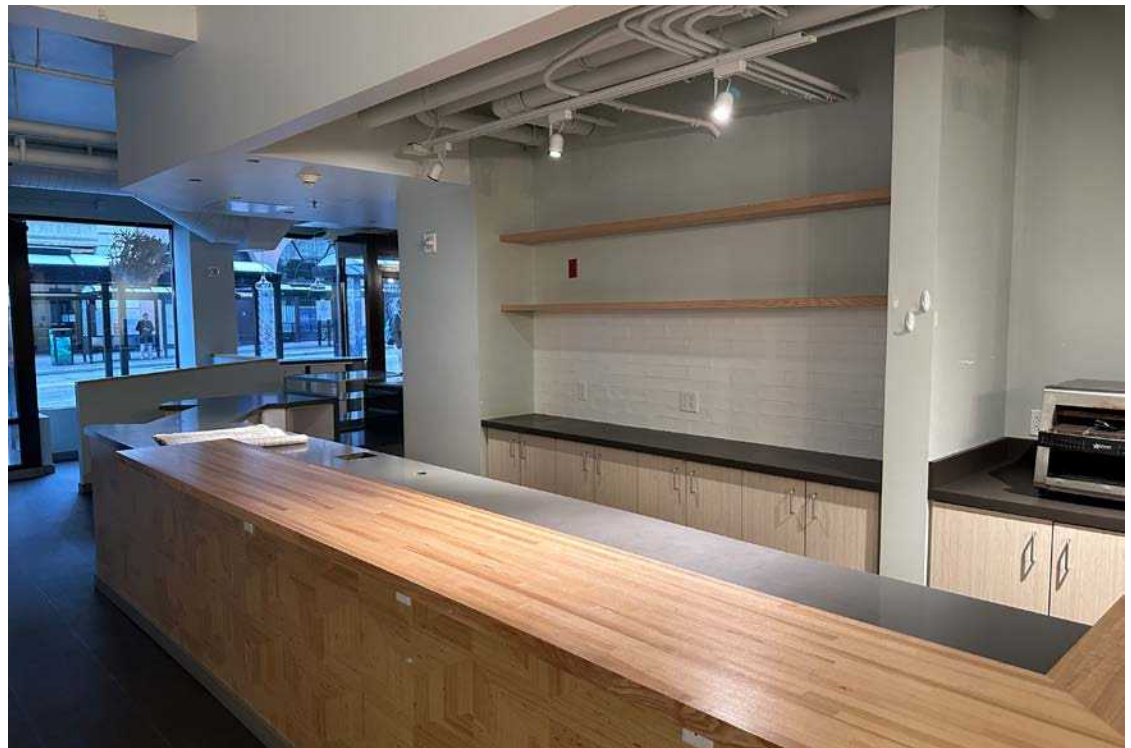
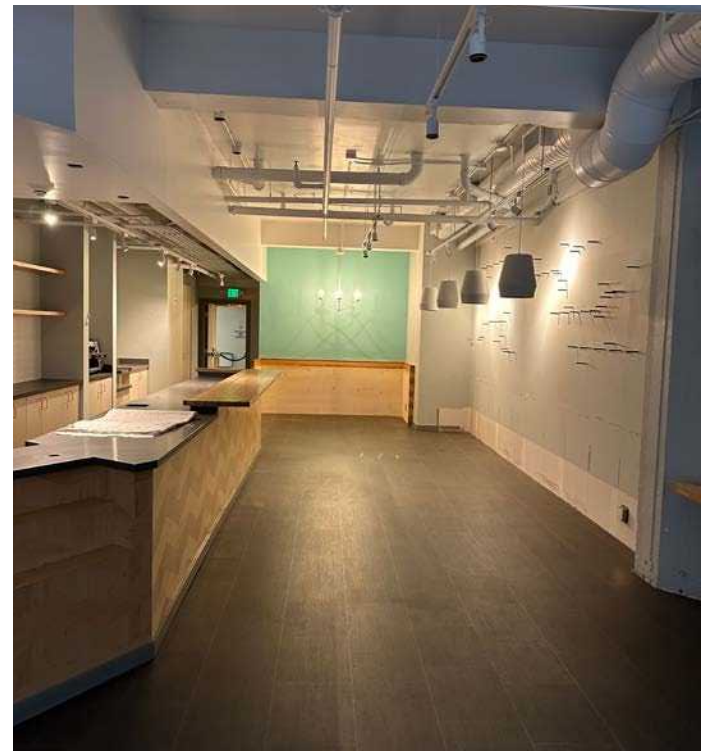




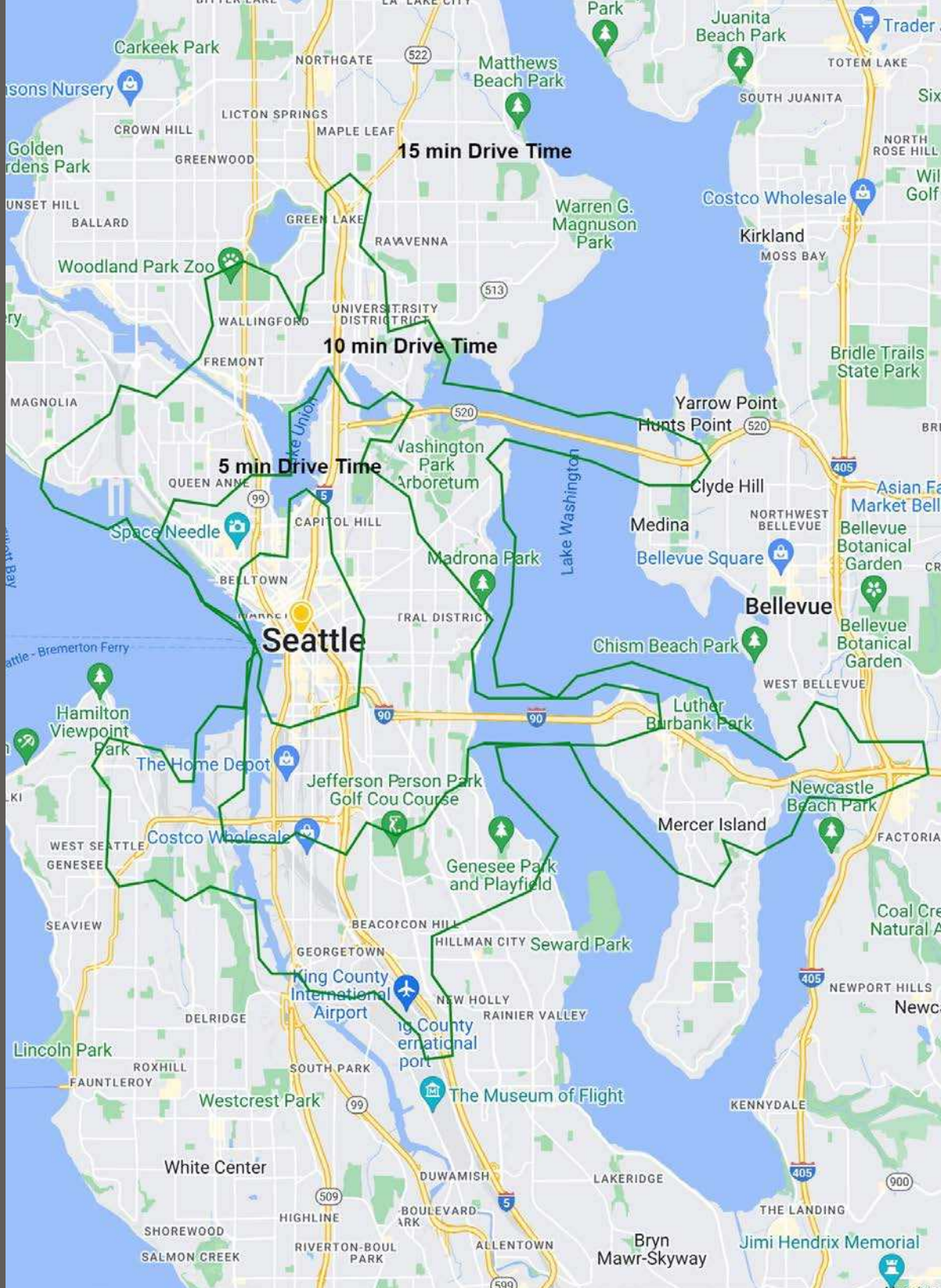
# RESTAURANT FLOOR PLAN



# PIROSHKI PHOTOS







## DEMOGRAPHICS

Regis - 2022

## POPULATION

5 Minutes	10 Minutes	15 Minutes
68,747	187,813	362,948

## AVERAGE HH INCOME

5 Minutes	10 Minutes	15 Minutes
\$114,527	\$138,260	\$147,833

## DAYTIME POPULATION

5 Minutes	10 Minutes	15 Minutes
203,488	336,748	478,954



LOCATION AERIAL



10 

MIN WALK TO  
FERRY TERMINAL

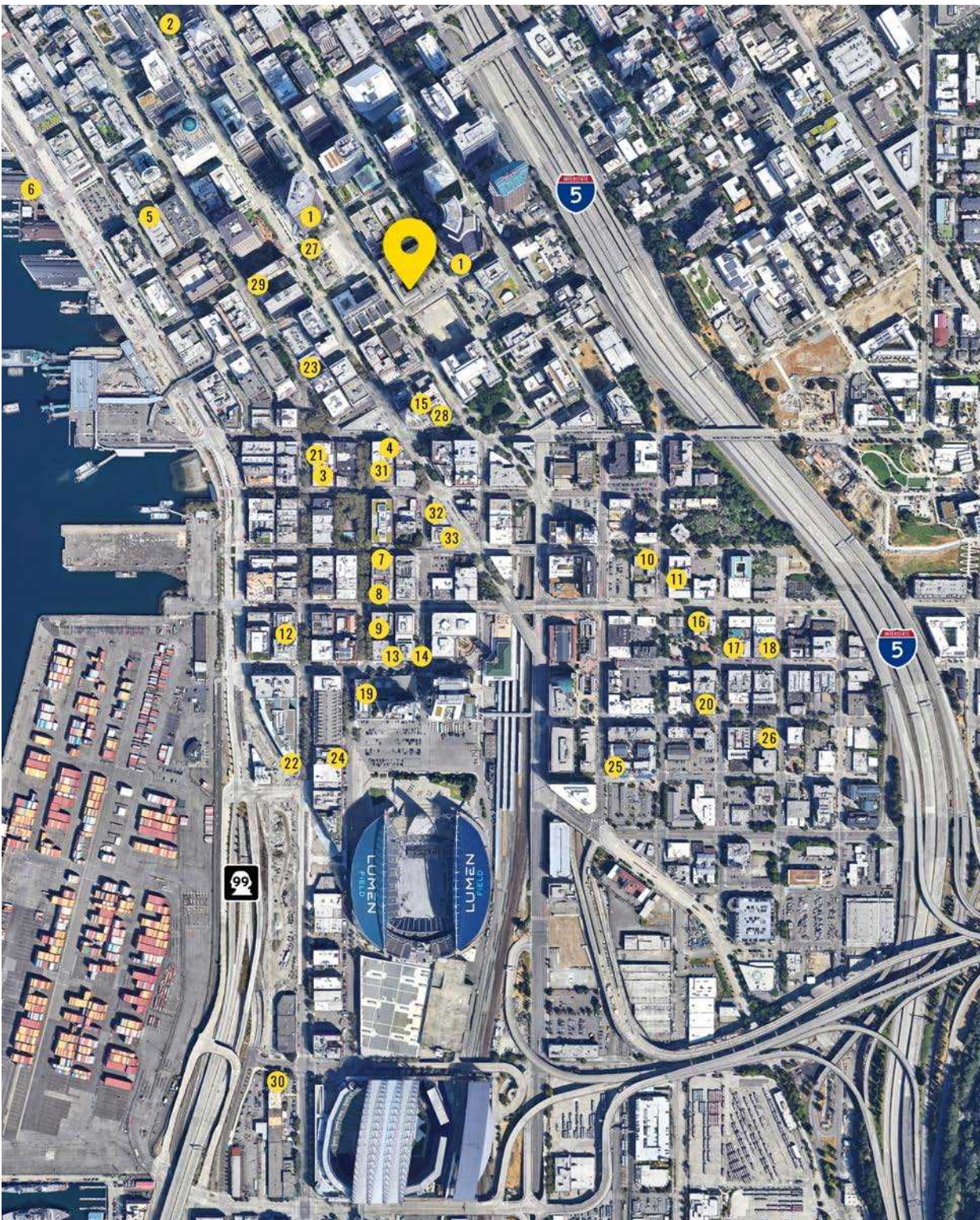
7 

MIN WALK TO  
TRANSIT TERMINAL

25 

BUS ROUTES  
WITHIN BLOCKS





	Restaurant
1	Starbucks
2	Delicatus
3	Damn the Weather
4	Tats Delicatessen
5	Skalka
6	Elliott's Oyster House
7	The London Plane
8	Caffe Umbria
9	Salumi
10	Tsukushinbo Restaurant
11	Maneki Restaurant
12	Il Terrazzo Carmine
13	Taylor Shellfish Oyster Bar
14	S.E.A Crab House
15	Smith Tower Observatory Bar
16	Dim Sum King
17	Mikes Noodle House
18	World Pizza
19	Quality Athletics
20	Cake House
21	Dead Line
22	Seattle's Historic Triangle Pub
23	Cherry Street Coffee House
24	Sluggers
25	Boiling Point
26	Ocean Star Chinese
27	Metropolitan Grill
28	Yellow Butterfly Coffee Shop
29	Cafe Hitchcock
30	Hatback Bar and Grill
31	Nirmal's
32	Goldbar
33	Flatstick





**SEATTLE** is a multi-faceted city located in the Pacific Northwest. An extremely multicultural influenced by the Pacific Rim in art and architecture, the city offers residents a pace of life that can be either relaxed or fast paced & entrepreneurial. Seattle is home to many successful startup businesses such as Microsoft, Starbucks, Eddie Bauer, Nintendo, Amazon.com, and REI. Water is everywhere and the city's maritime heritage is very noticeable.



TACOMA | KIRKLAND | PORTLAND | SEATTLE

# RELATIONSHIP FOCUSED. RESULTS DRIVEN.

**BLAKE WEBER**

206.898.1231  
bweber@firstwesternproperties.com

**NED WHALEN**

206.491.5998  
nwhalen@firstwesternproperties.com

**TIM WEBER**

253.471.5502  
tweber@firstwesternproperties.com

**DON WHITTLES**

253.471.5509  
dwhittles@firstwesternproperties.com



First Western Properties—Tacoma Inc. | 253.472.0404  
6402 Tacoma Mall Blvd, Tacoma, WA 98409 | fwp-inc.com

© First Western Properties, Inc. DISCLAIMER: The above information has been secured from sources believed to be reliable, however, no representations are made to its accuracy. Prospective tenants or buyers should consult their professional advisors and conduct their own independent investigation. Properties are subject to change in price and/or availability without notice.