

FOR LEASE

# FOREST OFFICE PARK

BUILDING G

## HIGHLIGHTS:

- Elevator served
- \$30.00/SF, Full Service
- On-site storage
- 4/1,000 Parking Ratio
- Accessible from Bel-Red and 148th

14715 BEL-RED ROAD  
BELLEVUE, WA 98007

**Brian Toy**

Director

425 985 6706

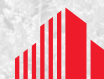
[brian.toy@cushwake.com](mailto:brian.toy@cushwake.com)

**Taylor Hudson**

Director

425 260 6761

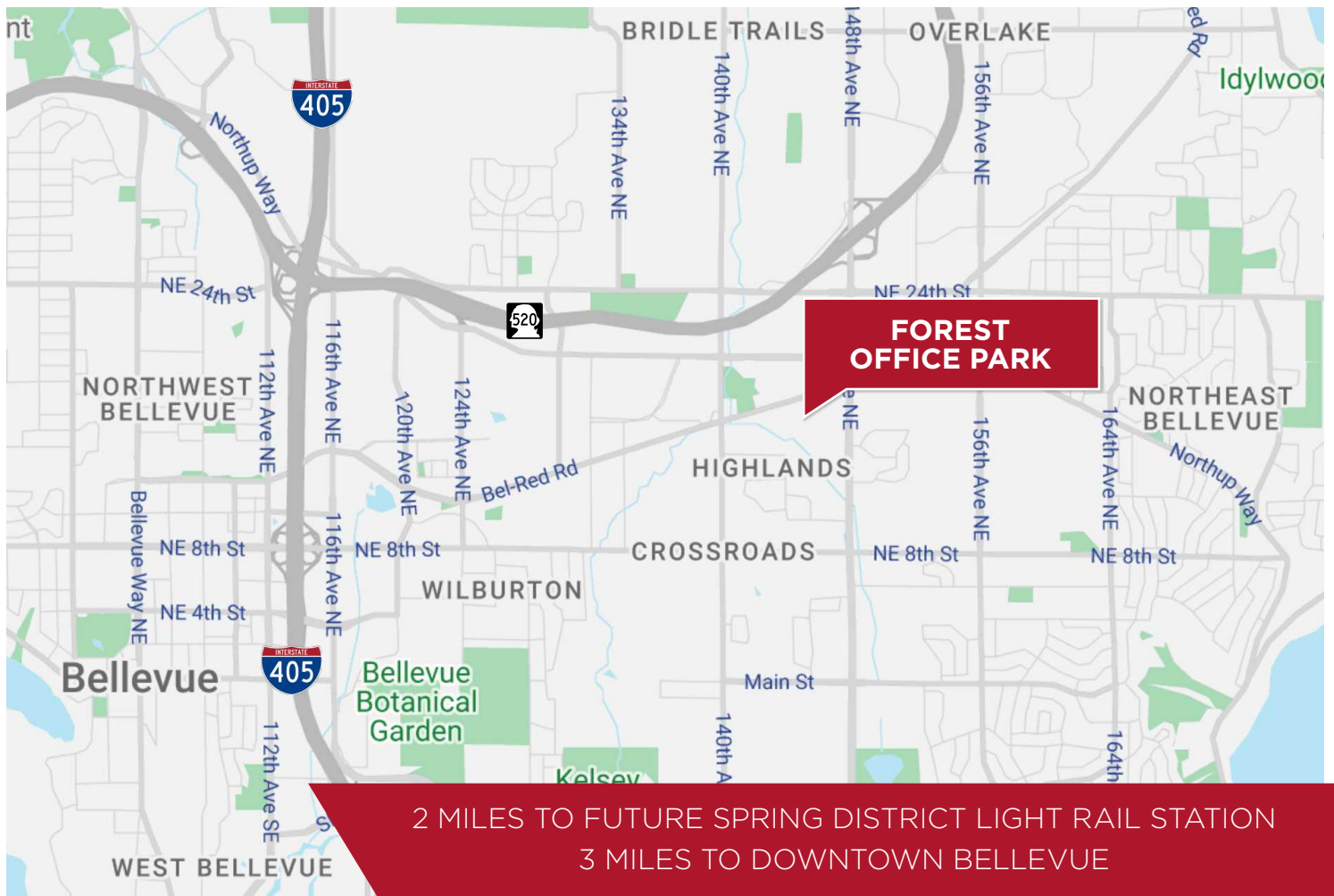
[taylor.hudson@cushwake.com](mailto:taylor.hudson@cushwake.com)



**CUSHMAN &  
WAKEFIELD**



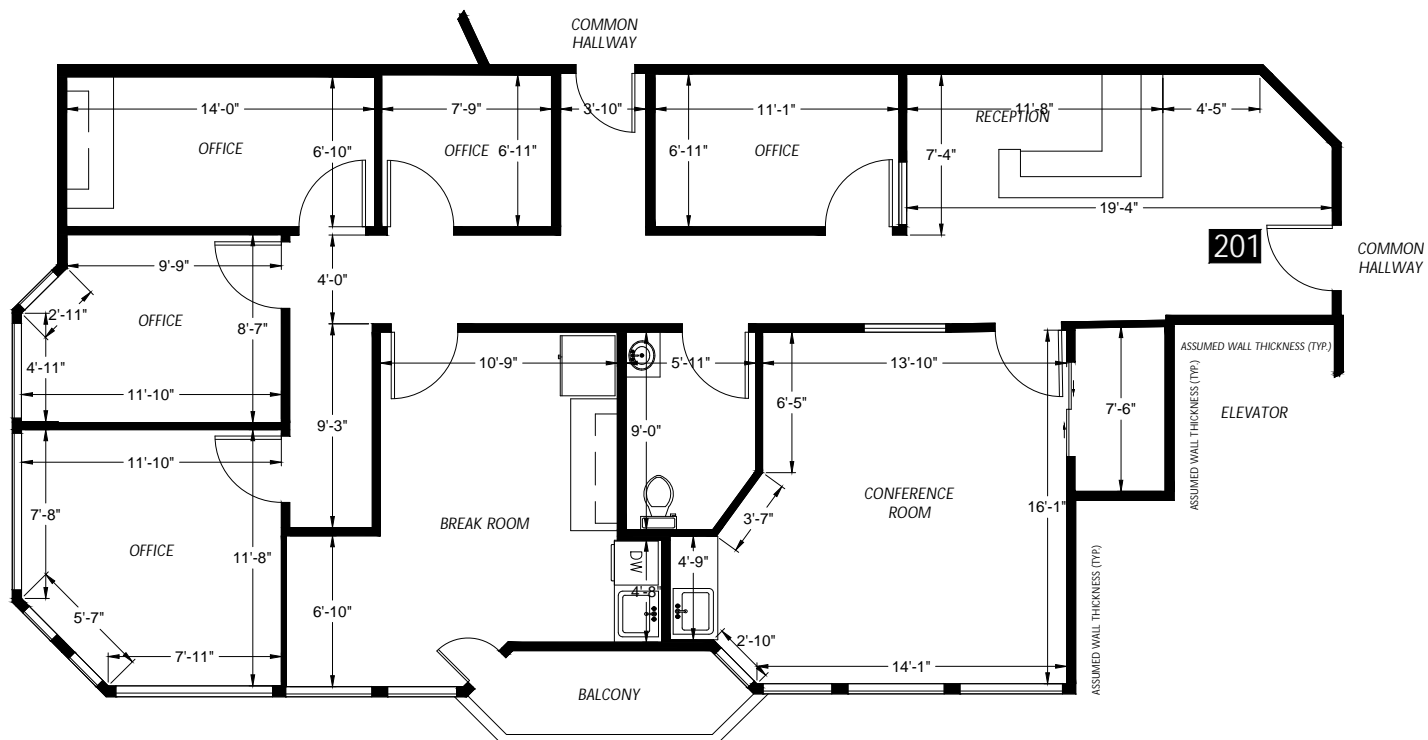
# BUILDING LOCATION





# SUITE 201 (1,643 SF)

Available January 1, 2024



**Brian Toy**  
Director  
425 985 6706  
brian.toy@cushwake.com

**Taylor Hudson**  
Director  
425 260 6761  
taylor.hudson@cushwake.com

