

1201 PACIFIC SUBLEASE

FOR SUBLEASE | 1201 PACIFIC AVENUE | TACOMA, WA



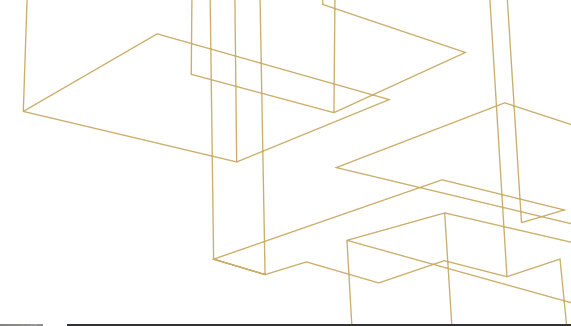
KIDDER.COM

km Kidder
Mathews

FOR SUBLEASE

1201 Pacific, Suite 1200

1201 PACIFIC AVENUE | TACOMA, WA



SUITE 1200: 9,960 SF

FULLY BUILT out modern office space

CALL for rates

SUBLEASE through December 2032

FURNITURE AND FIXTURES available to subtenant

STATE OF THE ART electronic systems available to subtenant

DREW FRAME
253.722.1433
drew.frame@kidder.com

WILL FRAME
253.722.1412
will.frame@kidder.com

KIDDER.COM

This information supplied herein is from sources we deem reliable. It is provided without any representation, warranty, or guarantee, expressed or implied as to its accuracy. Prospective Buyer or Tenant should conduct an independent investigation and verification of all matters deemed to be material, including, but not limited to, statements of income and expenses. Consult your attorney, accountant, or other professional advisor.

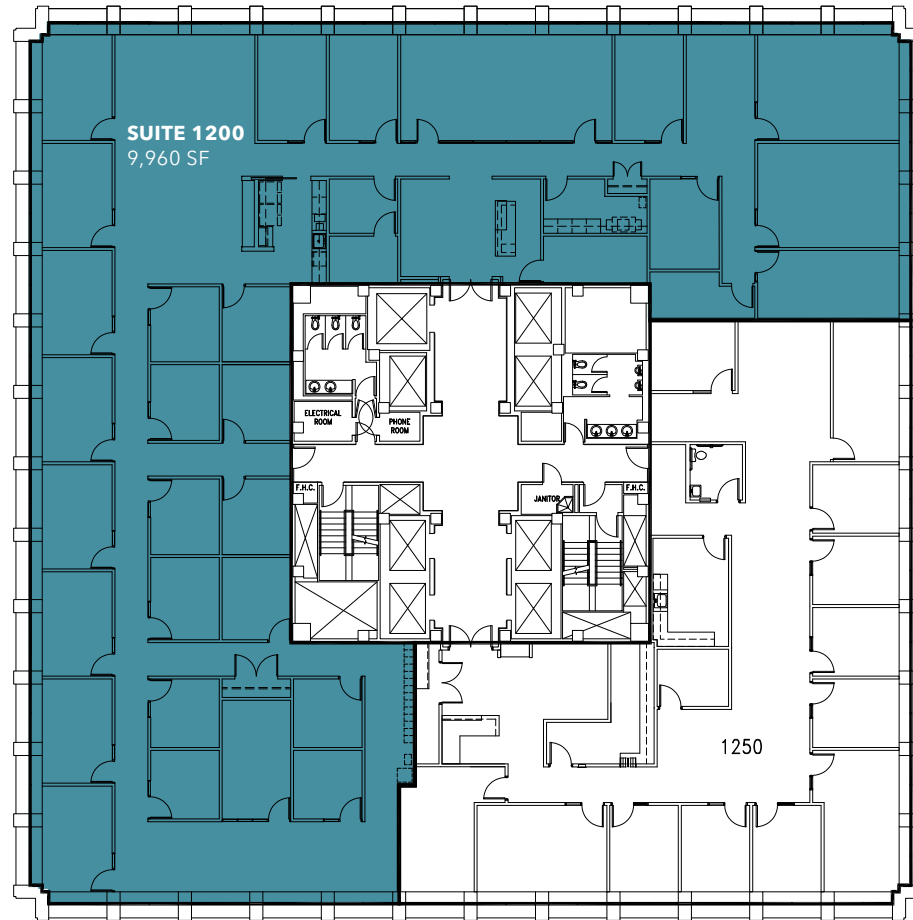


FOR SUBLEASE

1201 Pacific, Suite 1200

1201 PACIFIC AVENUE | TACOMA, WA

Suite 1200: 9,960 SF



DREW FRAME
253.722.1433
drew.frame@kidder.com

WILL FRAME
253.722.1412
will.frame@kidder.com

KIDDER.COM

This information supplied herein is from sources we deem reliable. It is provided without any representation, warranty, or guarantee, expressed or implied as to its accuracy. Prospective Buyer or Tenant should conduct an independent investigation and verification of all matters deemed to be material, including, but not limited to, statements of income and expenses. Consult your attorney, accountant, or other professional advisor.



FOR SUBLEASE

1201 Pacific, Suite 1200

1201 PACIFIC AVENUE | TACOMA, WA



KIDDER.COM

This information supplied herein is from sources we deem reliable. It is provided without any representation, warranty, or guarantee, expressed or implied as to its accuracy. Prospective Buyer or Tenant should conduct an independent investigation and verification of all matters deemed to be material, including, but not limited to, statements of income and expenses. Consult your attorney, accountant, or other professional advisor.

km Kidder Mathews