

SPRINGBROOK 188

FOR LEASE

183,452 SF
(2,403 SF OFFICE)

ADDRESS

7811-7915 South 188th St
Kent, WA

TOTAL BUILDING SF

183,452 SF

OFFICE SF

2,403 SF Total

S 188TH ST

NEWMARK

THAD MALLORY, SIOR

thad.mallory@nrmk.com
425-362-1410

TAYLOR HOFF, SIOR

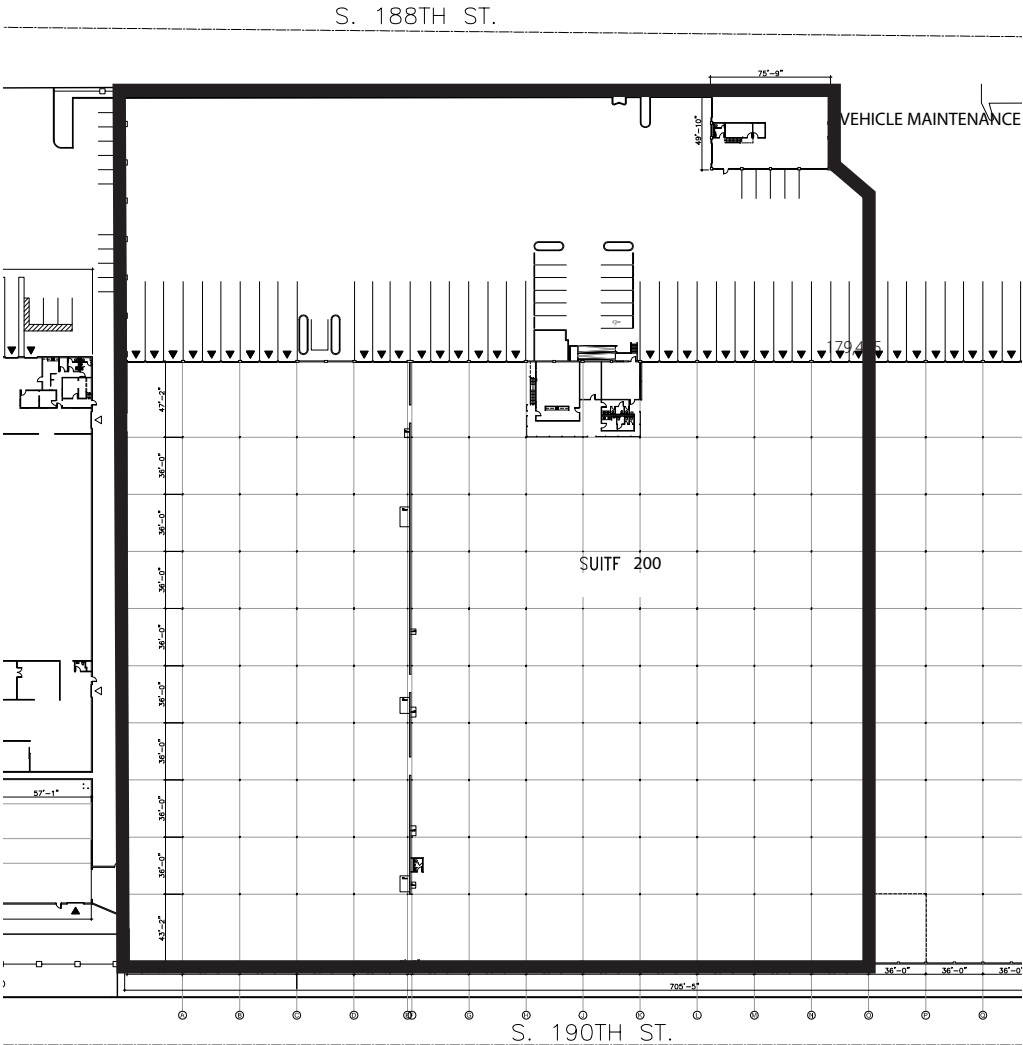
taylor.hoff@nrmk.com
425-362-1388

BLAKE BENTZ

blake.bentz@nrmk.com
425-362-1391

SPRINGBROOK 188

FLOOR PLAN



BUILDING DETAILS

ADDRESS
7811-7915 S 188th St, Kent, WA (Suite 200)

TOTAL BUILDING SF
183,452 SF

OFFICE SF
2,403 SF

CLEAR HEIGHT
24'

LOADING
30 Dock High Doors

PARKING/YARD AREA
Fenced Truck Court
Vehicle Maintenance Facility
23 Stripped Trailer Stalls

PROPERTY HIGHLIGHTS

- Available October 2024
- Kent Valley Location
- Immediate Access to SR 167, I-5 and I-405
- ESRF Sprinkler System
- 100% Temperature Controlled Warehouse

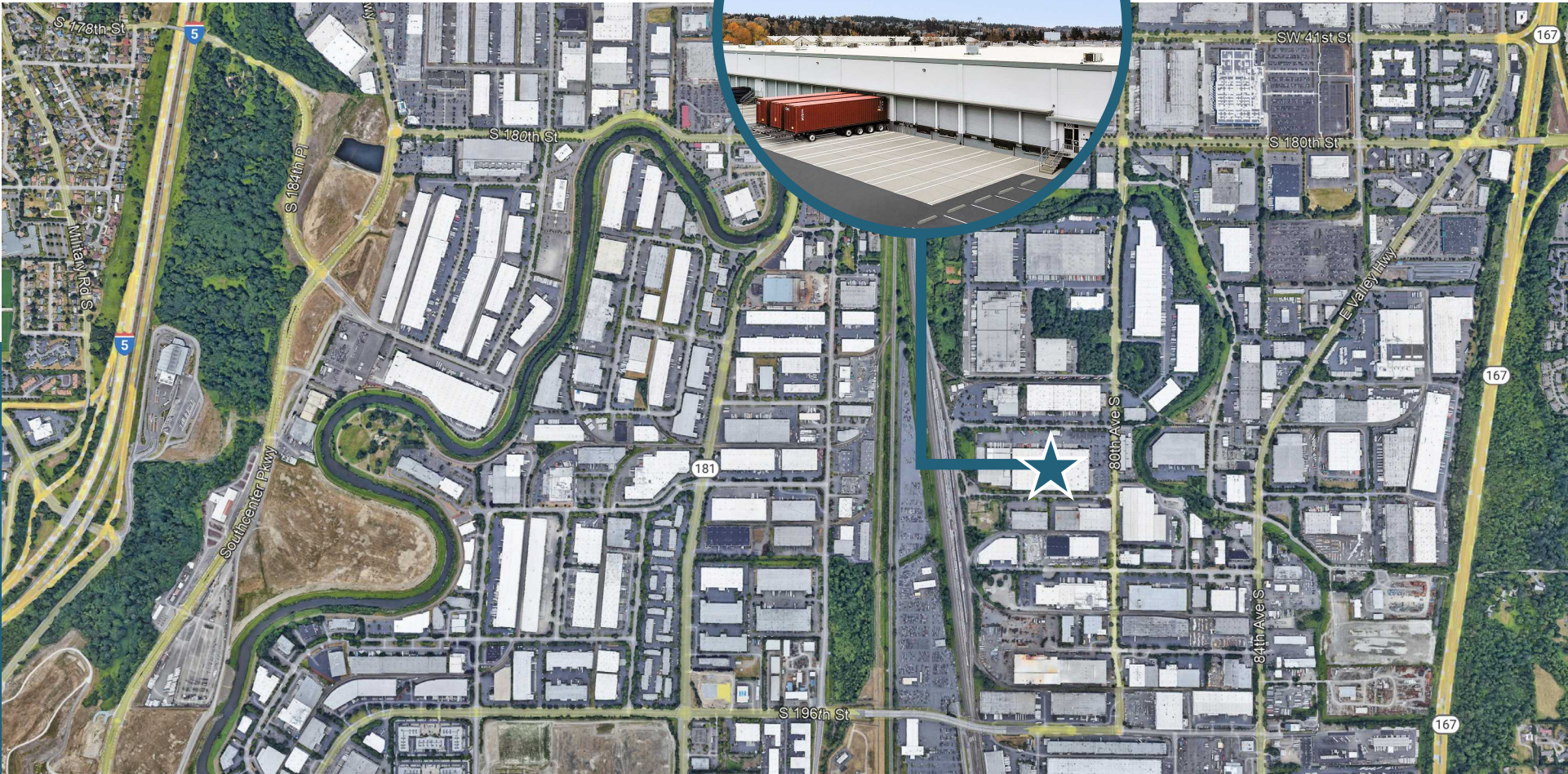
▲ DOCK HIGH

SPRINGBROOK 188

DRIVE TIMES

Seattle-Tacoma International Airport	6 Miles
Port of Seattle	13.5 Miles

7811-7915 S 188TH ST
KENT, WA



SPRINGBROOK 188

NEWMARK

Thad Mallory, SIOR
425.362.1410
thad.mallory@nmrk.com

Taylor Hoff, SIOR
425.362.1388
taylor.hoff@nmrk.com

Blake Bentz
425.362.1391
blake.bentz@nmrk.com

The distributor of this communication is performing acts for which a real estate license is required. The information contained herein has been obtained from sources deemed reliable but has not been verified and no guarantee, warranty or representation, either express or implied, is made with respect to such information. Terms of sale or lease and availability are subject to change or withdrawal without notice.