

# Twin Creeks Center

# OFFICE FOR LEASE

500 SE Everett Mall Way  
Everett, WA 98208



Jonathan Willett  
Madeline Stutz

(206) 283-5212  
[www.wccommercialrealty.com](http://www.wccommercialrealty.com)

# WCCR

West Coast Commercial Realty

DISCLAIMER: The above information has been secured from sources believed to be reliable, however, no representations are made to its accuracy. Prospective tenants or buyers should consult their professional advisors and conduct their own independent investigation. Site plan and configuration are subject to change. Properties are subject to change in price and/or availability without notice. West Coast Commercial Realty, LLC

# Twin Creeks Center

# OFFICE FOR LEASE

500 SE Everett Mall Way  
Everett, WA 98208



## THE OPPORTUNITY

Second floor office space available at Twin Creeks Center. Located just blocks from the future Everett Mall as well as neighboring tenants such as Target, Trader Joe's, Ulta, and L.A. Fitness. Please reach out for more information.

Suite B240: 1,930 SF, asking rent \$25/SF, full service gross

Suite B227: 525 SF, asking rent \$25/SF, full service gross



Jonathan Willett  
Madeline Stutz

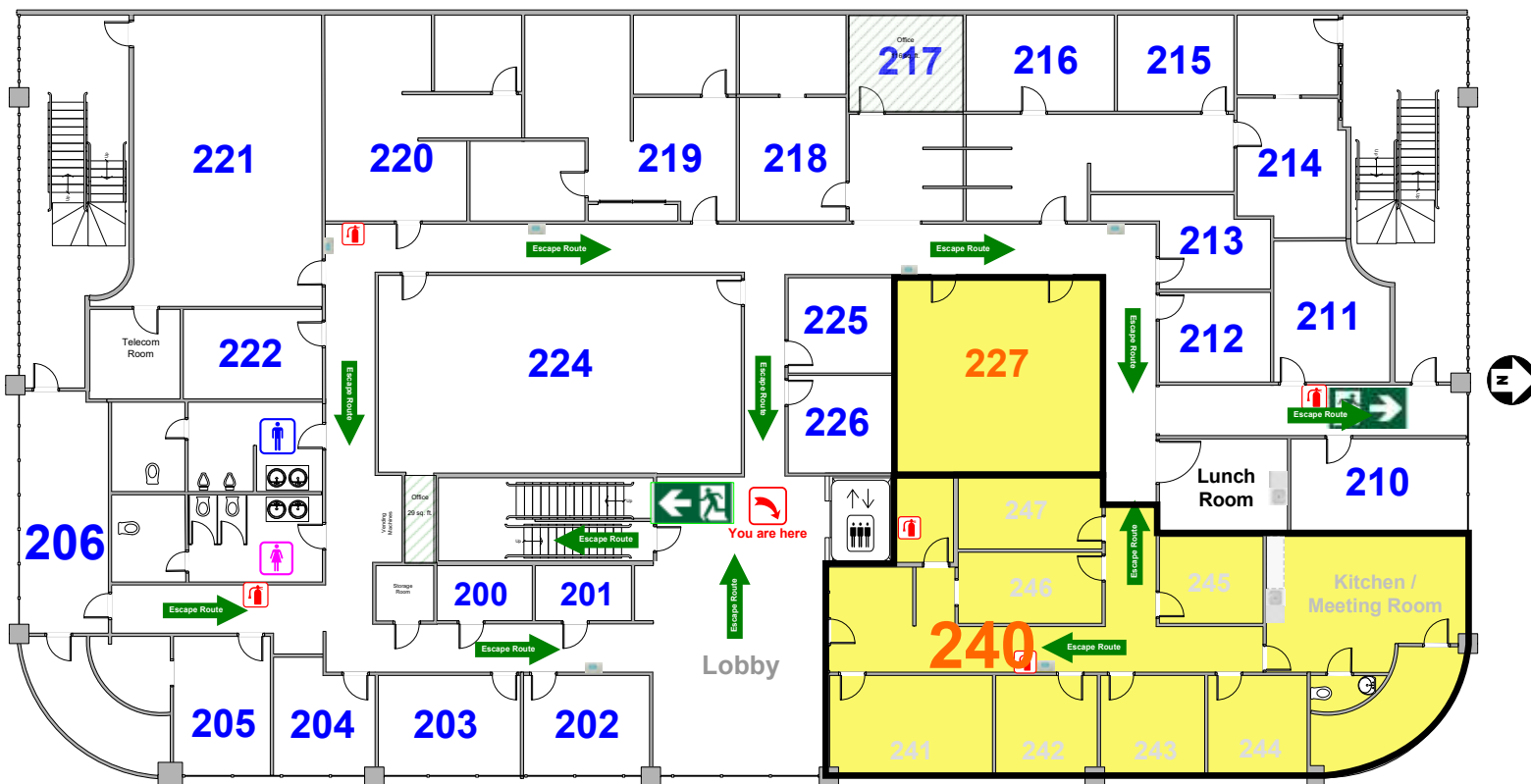
(206) 283-5212  
www.wccommercialrealty.com

# WCCR

West Coast Commercial Realty

DISCLAIMER: The above information has been secured from sources believed to be reliable, however, no representations are made to its accuracy. Prospective tenants or buyers should consult their professional advisors and conduct their own independent investigation. Site plan and configuration are subject to change. Properties are subject to change in price and/or availability without notice. West Coast Commercial Realty, LLC

## FLOOR PLAN



Suite B 240: 1,930 SF AVAILABLE

Suite B 227: 525 SF AVAILABLE



Jonathan Willett  
Madeline Stutz

(206) 283-5212  
www.wccommercialrealty.com

# WCCR

West Coast Commercial Realty

DISCLAIMER: The above information has been secured from sources believed to be reliable, however, no representations are made to its accuracy. Prospective tenants or buyers should consult their professional advisors and conduct their own independent investigation. Site plan and configuration are subject to change. Properties are subject to change in price and/or availability without notice. West Coast Commercial Realty, LLC

# Twin Creeks Center

# OFFICE FOR LEASE

500 SE Everett Mall Way  
Everett, WA 98208



**Twin Creeks Center**  
500 SE Everett Mall Way  
Everett, WA 98208

## DEMOGRAPHICS

### TOTAL POPULATION

1-Mile: 20,123  
2-Mile: 79,592  
3-Mile: 111,193

### TOTAL EMPLOYEES

1-Mile: 9,458  
2-Mile: 23,299  
3-Mile: 79,872

### AVERAGE HOUSEHOLD INCOME

1-Mile: \$76,412  
2-Mile: \$84,859  
3-Mile: \$94,725



Jonathan Willett  
Madeline Stutz

(206) 283-5212  
www.wccommercialrealty.com

# WCCR

West Coast Commercial Realty

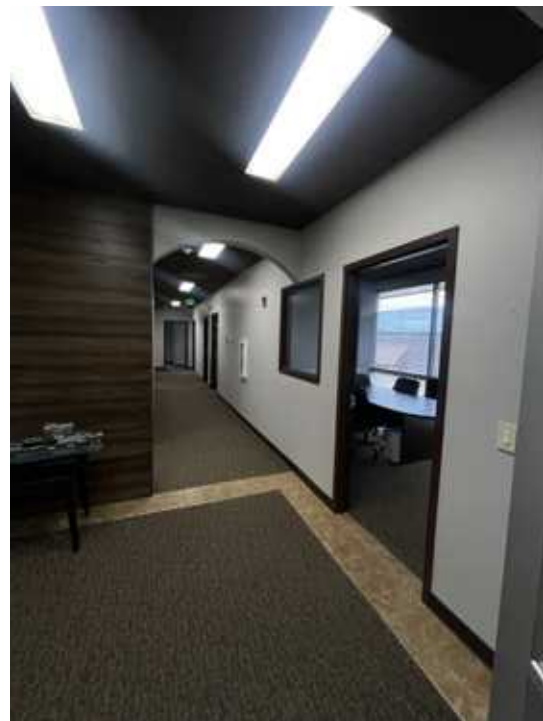
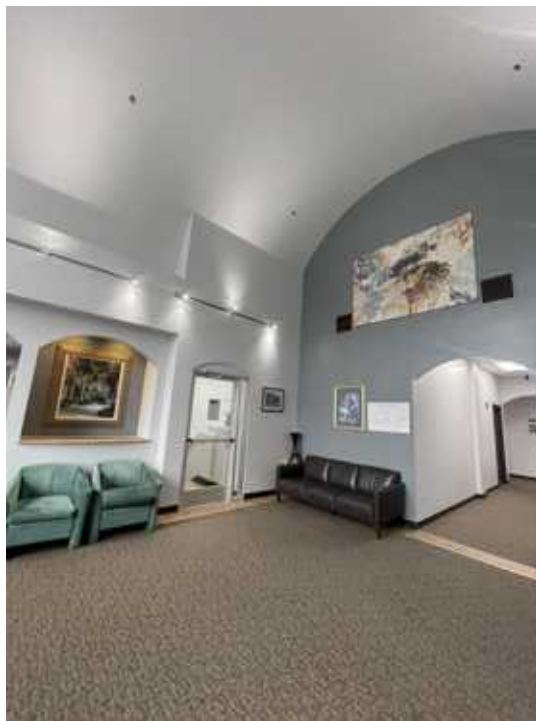
DISCLAIMER: The above information has been secured from sources believed to be reliable, however, no representations are made to its accuracy. Prospective tenants or buyers should consult their professional advisors and conduct their own independent investigation. Site plan and configuration are subject to change. Properties are subject to change in price and/or availability without notice. West Coast Commercial Realty, LLC

# Twin Creeks Center

# OFFICE FOR LEASE

500 SE Everett Mall Way  
Everett, WA 98208

## INTERIOR OFFICE PHOTOS



Jonathan Willett  
Madeline Stutz

(206) 283-5212  
www.wccommercialrealty.com

# WCCR

West Coast Commercial Realty

DISCLAIMER: The above information has been secured from sources believed to be reliable, however, no representations are made to its accuracy. Prospective tenants or buyers should consult their professional advisors and conduct their own independent investigation. Site plan and configuration are subject to change. Properties are subject to change in price and/or availability without notice. West Coast Commercial Realty, LLC