



For Lease

## Office space in Northwest Lodge-style building

# Vigilant Office Center

6003 23rd Dr. W | Everett, WA 98203

### Property Highlights

- Suite 101: ± 3,250 RSF
- Three private offices, open reception area, full kitchen and open work area
- Ample & free on-site parking
- High-end finishes throughout and multiple signage opportunities on monument & in building
- Numerous nearby amenities and easy access to SR 526, SR 525 and I-5
- Available immediately
- Asking Rental Rate: \$18.75/ SF/Yr, NNN  
NNNs - \$9.80/SF/Yr

#### Talor Okada

Executive Vice President

425 492 5145

[talor.okada@colliers.com](mailto:talor.okada@colliers.com)

#### Rich Sander

Senior Associate

360 981 2543

[rich.sander@colliers.com](mailto:rich.sander@colliers.com)

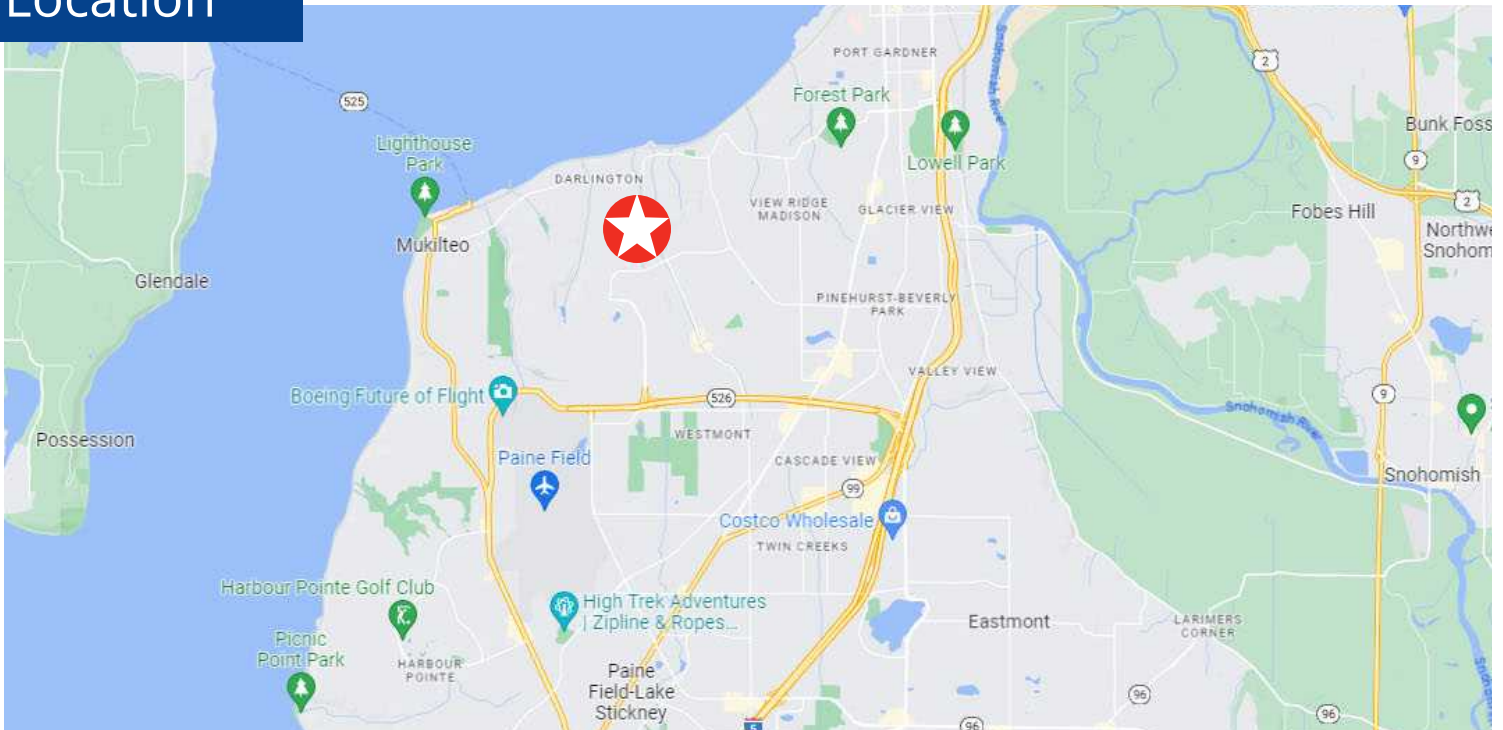
11225 SE 6th St., Suite 240

Bellevue, WA 98004

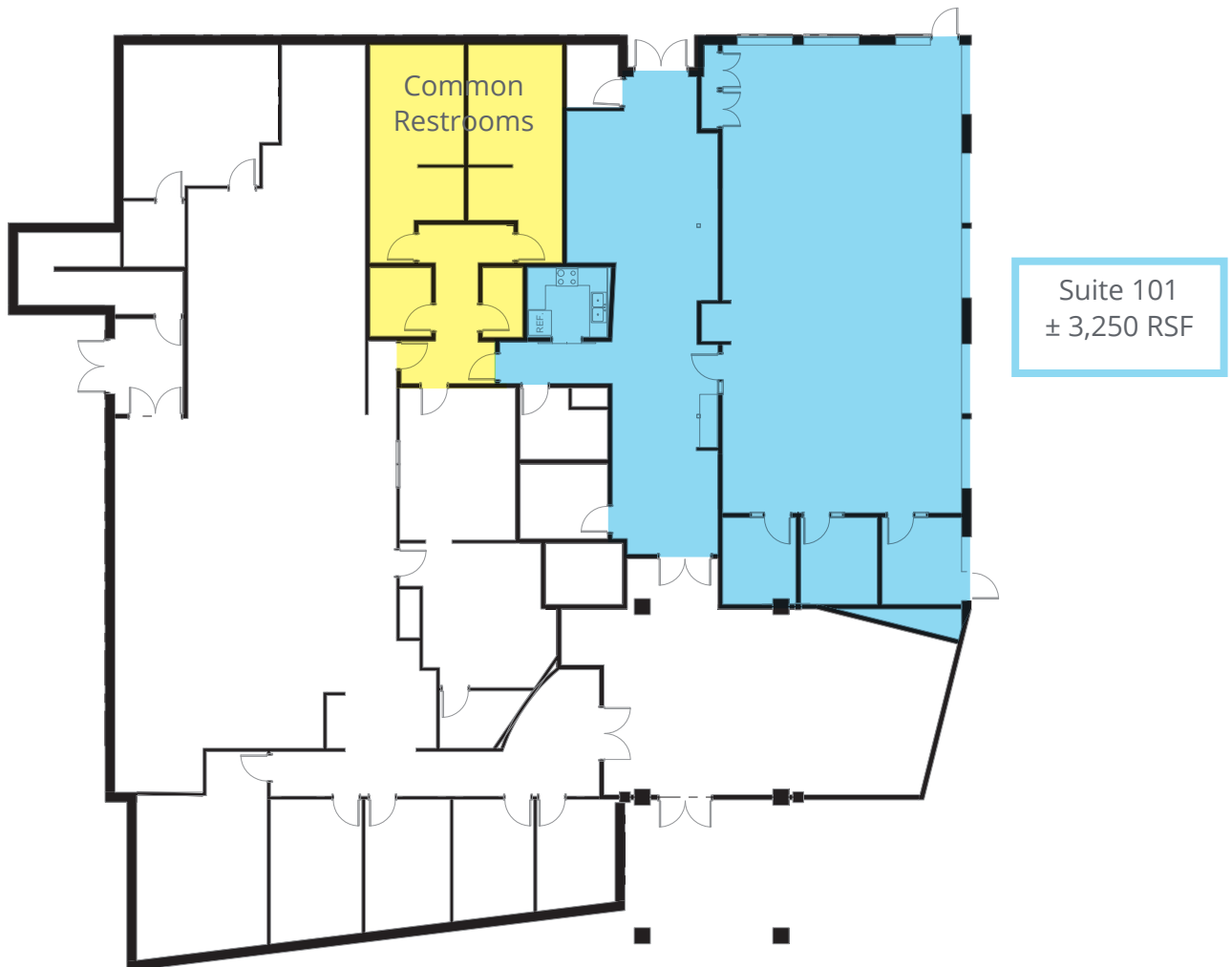
425 453 4545

[www.colliers.com](http://www.colliers.com)

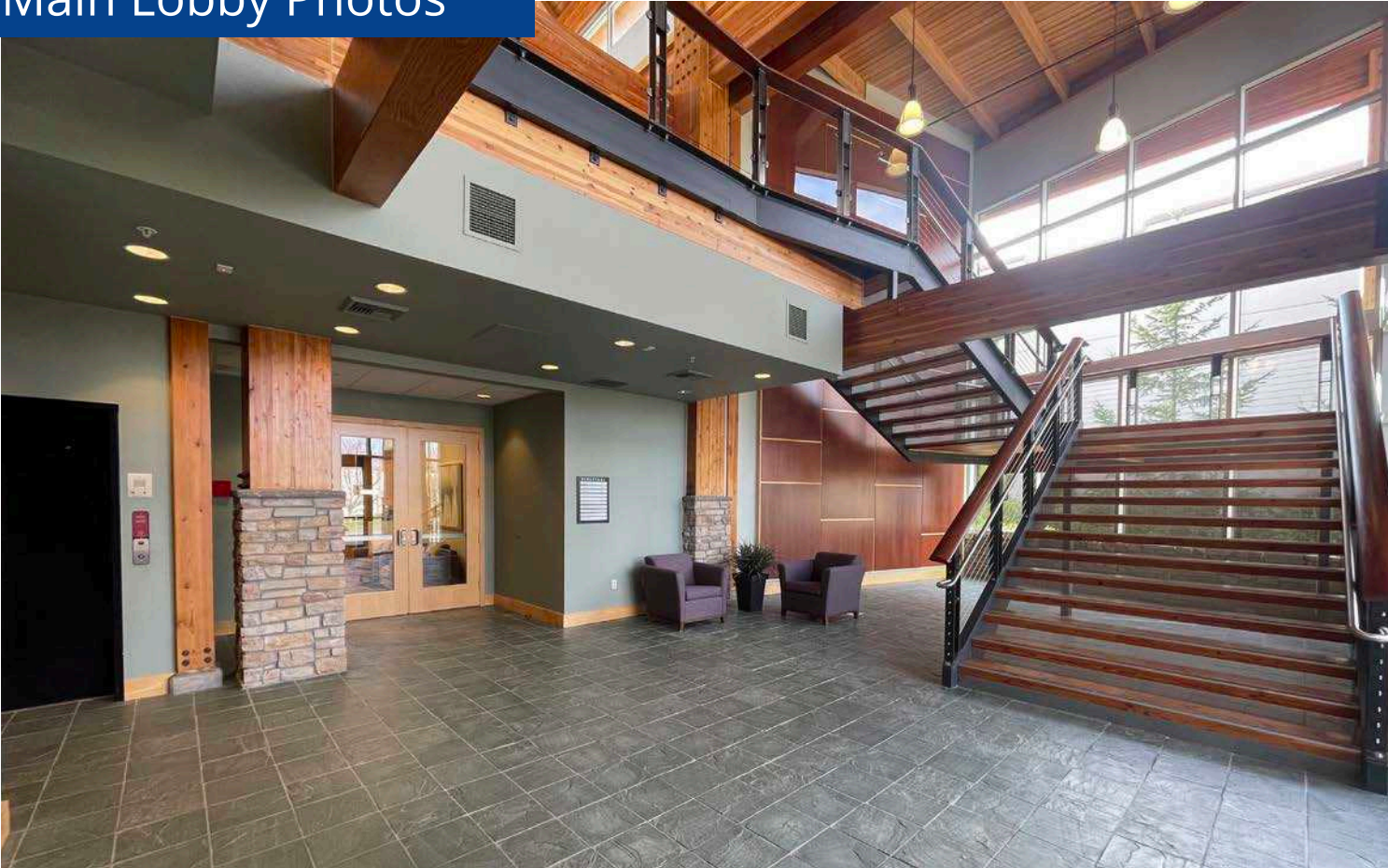
# Location



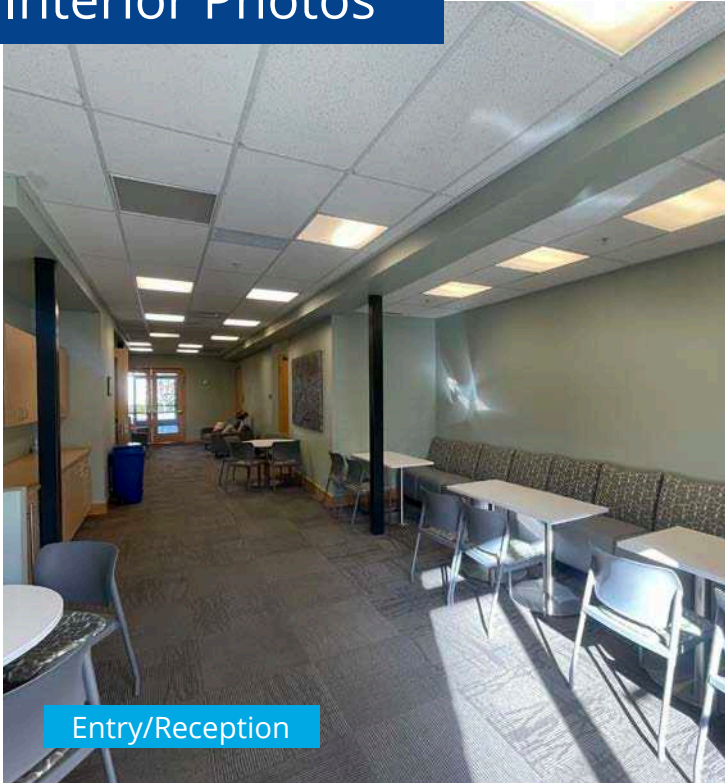
# Floor Plan



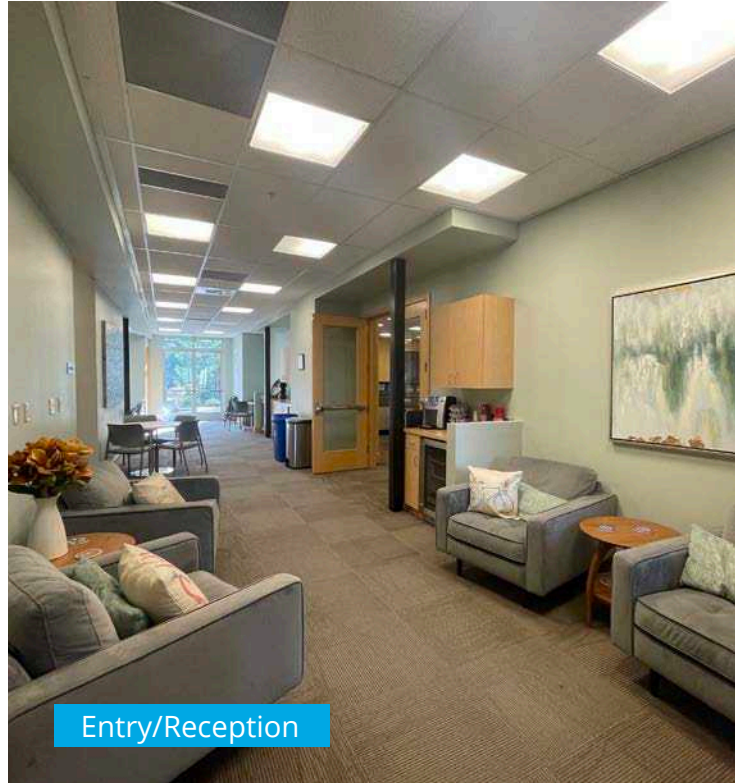
Main Lobby Photos



# Interior Photos



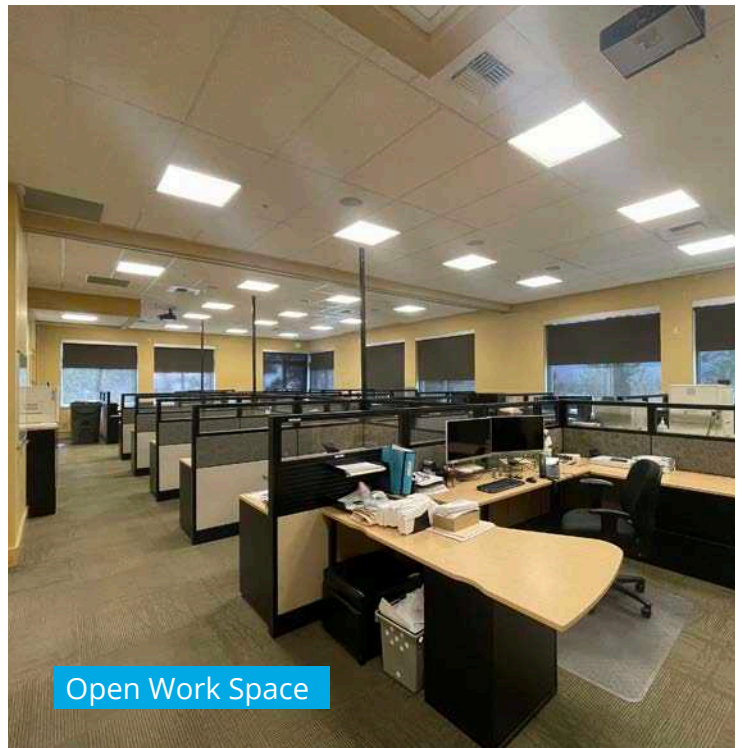
Entry/Reception



Entry/Reception



Full Kitchen



Open Work Space



11225 SE 6th St., Suite 240  
Bellevue, WA 98004  
425 453 4545  
www.colliers.com

**Talor Okada**  
Executive Vice President  
425 492 5145  
talor.okada@colliers.com

**Rich Sander**  
Senior Associate  
360 981 2543  
rich.sander@colliers.com