

TUMWATER LOGISTICS CENTER

9744 Blomberg Street SW, Tumwater, WA

CLASS A INDUSTRIAL BUILDING
FOR LEASE



339,420 SF INDUSTRIAL BUILDING

EXCLUSIVELY MARKETING BY:

Arie Salomon, SIOR, CCIM
Principal
+1 425 586 5636
asalomon@nai-psp.com

Jeff Forsberg, CCIM
Principal
+1 425 586 5610
jforsberg@nai-psp.com

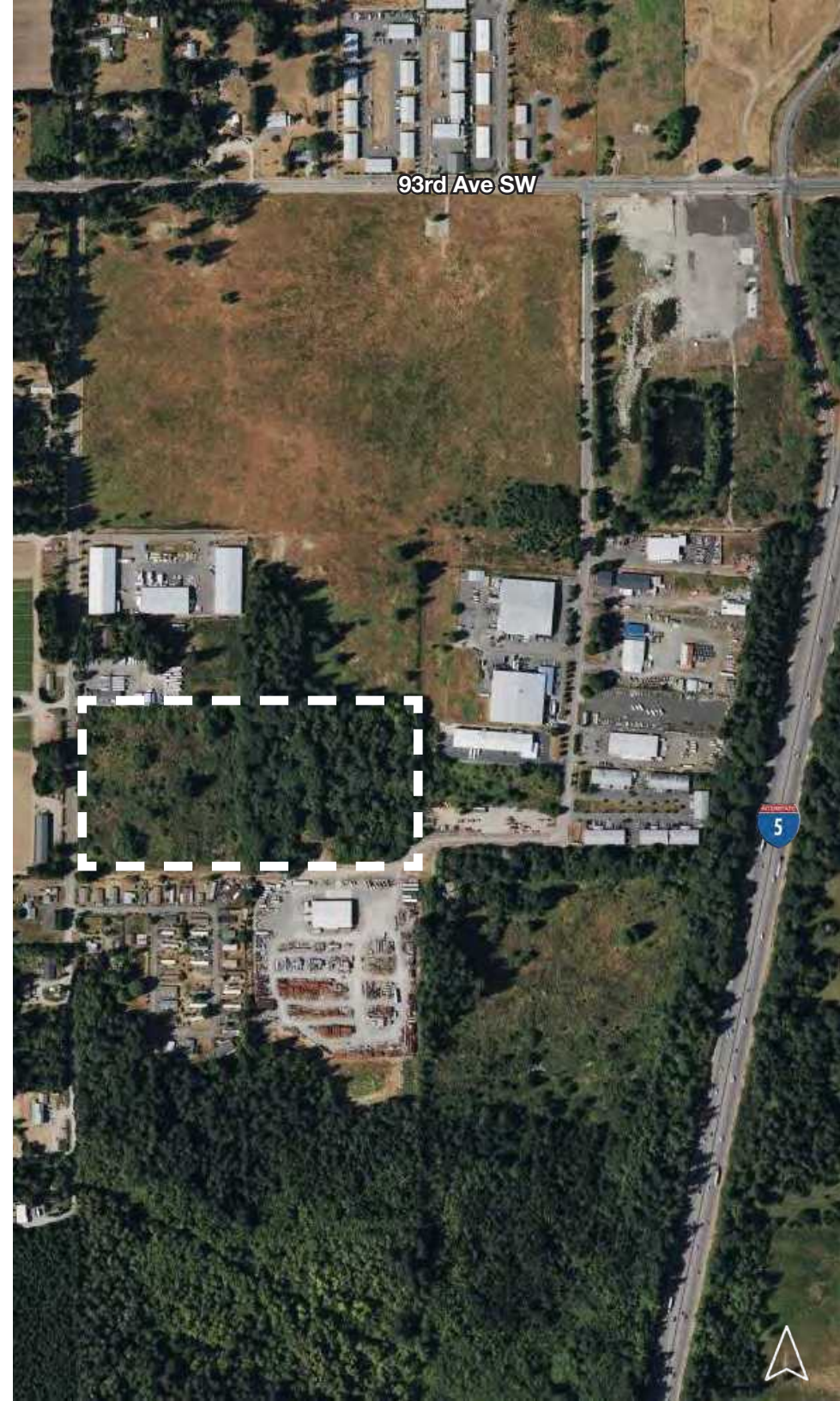
Dave Douglas, CCIM
Partner
+1 253 203 1326
ddouglas@nai-psp.com

NAI Puget Sound
Properties

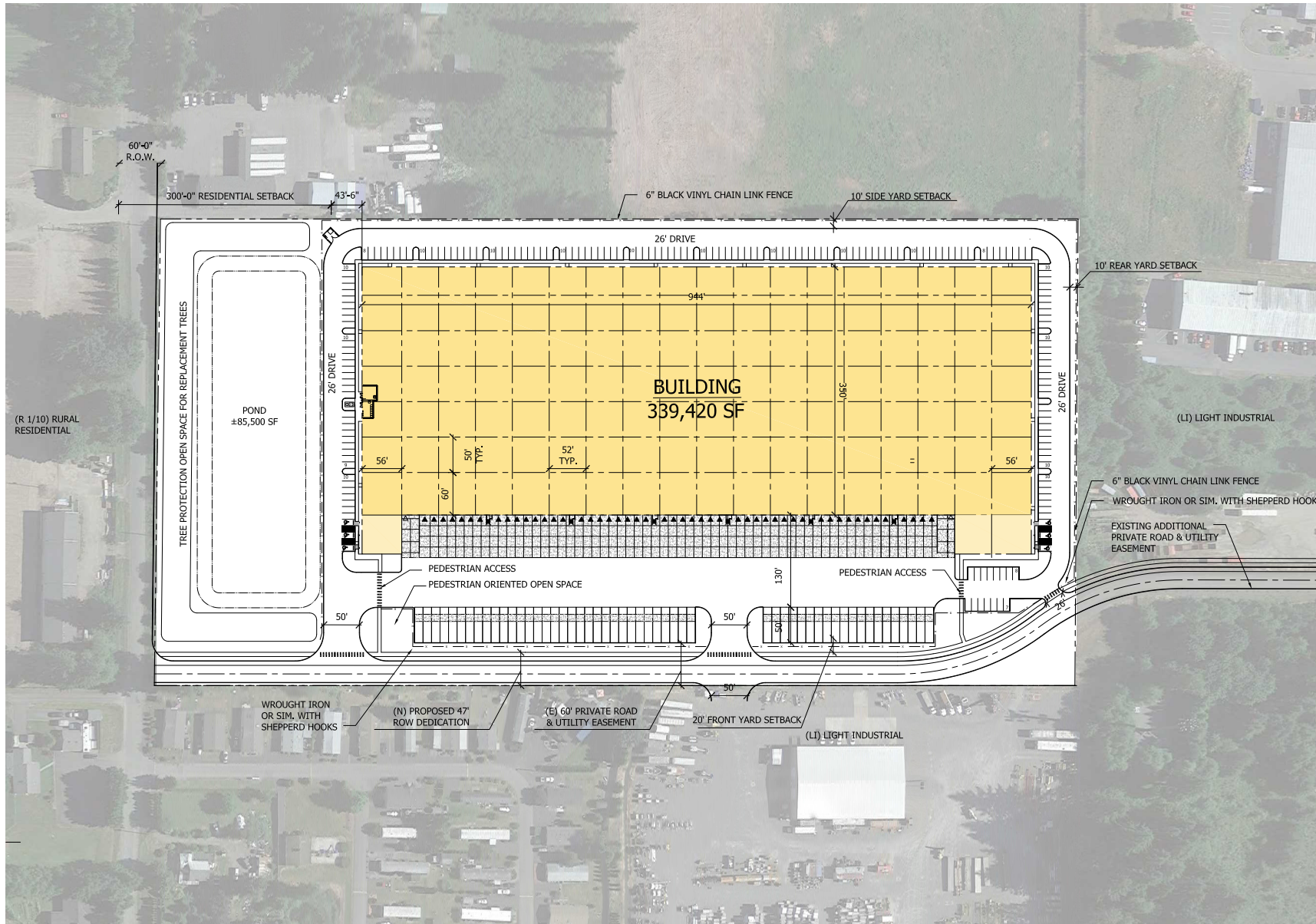
CROW HOLDINGS

TUMWATER LOGISTICS CENTER

Square footage	339,420 SF
Total Site Area	19.58 acres
Clear Height	40'
Column Spacing	52' x 50'
Auto Parking	190
Trailer parking	53
Structure	Concrete Tilt
Zoning	LI (Light Industrial)
Dock Doors	50
Drive-In Doors	2
Fire Protection	ESFR
Electrical Service	3,000 amps
Lighting	Energy efficient LED lighting
Tax Incentive	Significant Sale Tax Rebate Available



SITE PLAN



THE INFORMATION CONTAINED HEREIN HAS BEEN GIVEN TO US BY THE OWNER OF THE PROPERTY OR OTHER SOURCES WE DEEM RELIABLE, WE HAVE NO REASON TO DOUBT ITS ACCURACY, BUT WE DO NOT GUARANTEE IT. ALL INFORMATION SHOULD BE VERIFIED PRIOR TO PURCHASE OR LEASE. G:\SHARED DRIVES\ADMIN TEAM\MARKETING\FLYERS\OUTSIDE MARKET COUNTY\THURSTON COUNTY\9744 BLOMBERG ST SW\TUMWATER LOGISTICS CENTER (9744 BLOMBERG ST SW)

AREA OVERVIEW

