

# 30,000 SF

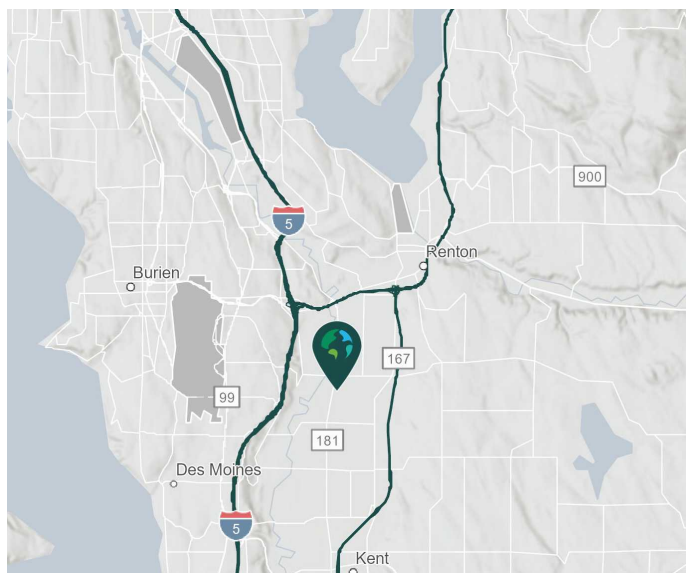
Industrial Space For Lease



## Prologis Park Kent 45



18405 – 72nd Avenue S  
Kent, WA 98032 USA



### LOCATION

- Located in Prologis Park Kent
- Located on a prominent North Kent Valley thoroughfare

### FACILITY

- 30,000 SF total available
- 3,005 SF office space
- 24' clear height
- 50' x 20' column spacing
- 5 dock high doors & 1 grade level door
- Available 10/1/2024

### ADVANTAGES AND AMENITIES

- Access to the Prologis Essentials platform, which includes:
  - [Operations Essentials](#)
  - [Energy Essentials](#)
  - [Workforce Essentials](#)
  - [Mobility Essentials](#)
  - [Digital Essentials](#)

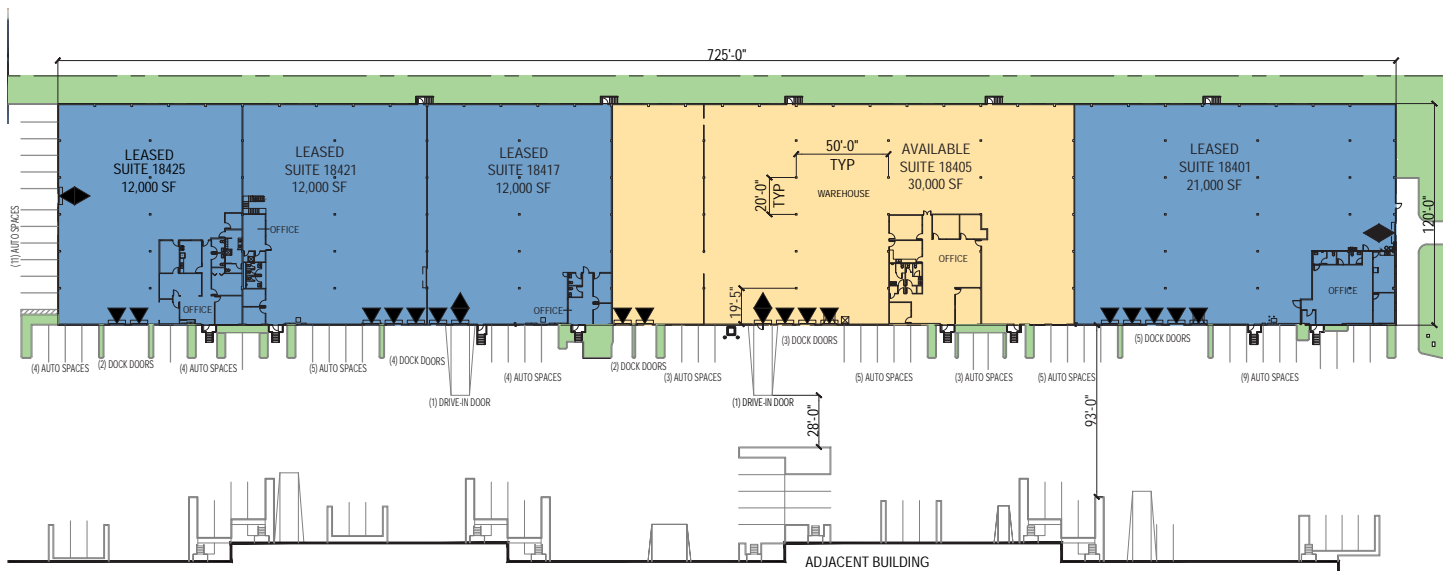
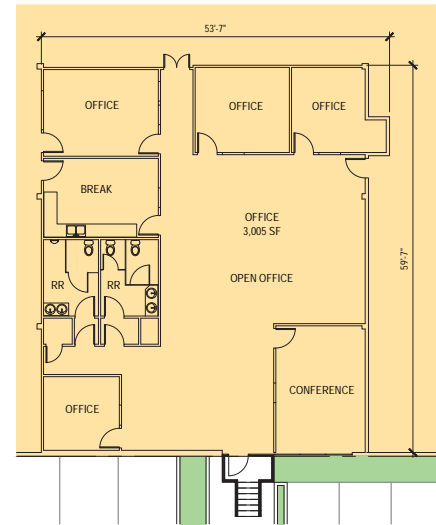
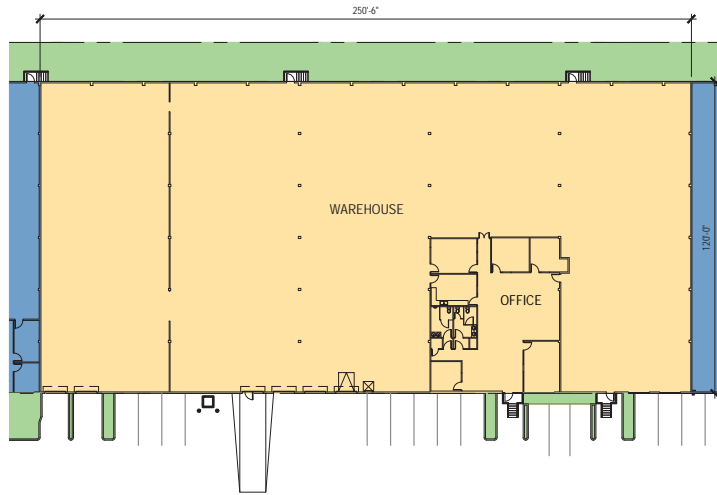
**Your single-source service for efficient move-in and operations: [prologisessentials.com](https://www.prologisessentials.com)**

# 30,000 SF

## Industrial Space For Lease



### Prologis Park Kent 45



**NAI Puget Sound Properties**  
Arie Salomon, SIOR, CCIM  
asalomon@nai-psp.com  
ph +1 425.586.5636  
fax +1 425.455.9138  
10900 NE 8th St, Suite 1500  
Bellevue, WA 98004 USA

**NAI Puget Sound Properties**  
Jeff Forsberg, CCIM  
jforsberg@nai-psp.com  
ph +1 425.586.5610  
fax +1 425.455.9138  
10900 NE 8th St, Suite 1500  
Bellevue, WA 98004 USA

**NAI Puget Sound Properties**  
Connor Powell, CCIM  
cpowell@nai-psp.com  
ph +1 425.586.5642  
fax +1 425.455.9138  
10900 NE 8th St, Suite 1500  
Bellevue, WA 98004 USA

**Prologis**  
Luca Merlino  
lmerlino@prologis.com  
ph +1 206.414.7621  
fax +1 206.424.7601  
5900 Airport Way S, Suite 300  
Seattle, WA 98108 USA