

**RG RG**

**ROB GASCA**  
REAL ESTATE GROUP  
COMMERCIAL | MULTI-FAMILY  
MAPLE LEAF REAL ESTATE

*FOR LEASE*

# Town Centre Village

10240 Bridgeport Way SW Lakewood WA 98499



Rob Gasca

Cell: 425-766-3054

Robgasca@mapleleafmgt.com

Alex Ardiente

Cell: 425-273-3386

alex@mapleleafmgt.com

**Rob Gasca Real Estate Group**  
www.robgasca.com

DISCLAIMER: The information on the following pages has been secured from sources believed to be reliable, however, no representations are made to its accuracy. Prospective tenants or buyers should consult their professional advisors and conduct their own independent investigation. Properties are subject to change in price and/or availability without notice.

# Town Centre Village

10240 Bridgeport Way SW Lakewood, WA 98499

Rob Gasca

Cell: 425-766-3054

Robgasca@mapleleafmgt.com

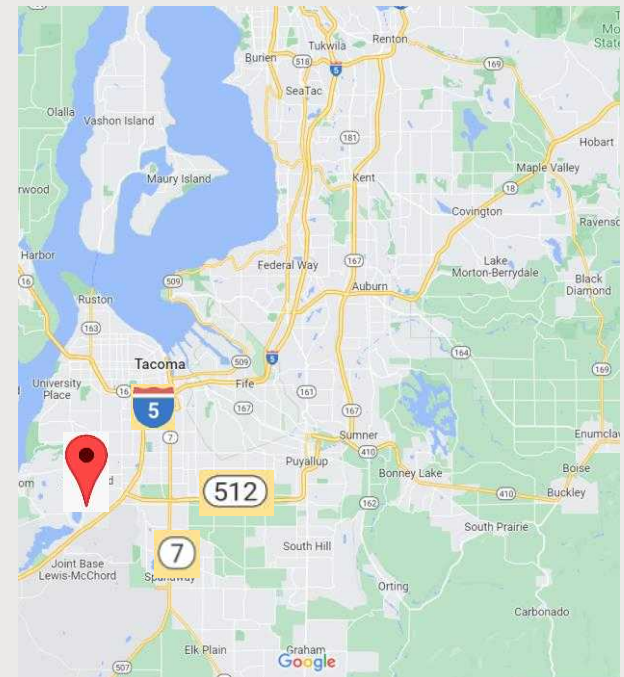
Alex Ardiente

Cell: 425-273-3386

alex@mapleleafmgt.com



- 5-minute access to I-5
- 5-minute access to HW512
- 10-minute access to HW7



DEMOGRAPHICS 2023 consensus	MILE 1	MILE 3	MILE 5
Population	12,508	99,820	244,201
Average HH Income	\$57,999	\$71,087	\$75,324



**Rob Gasca Real Estate Group**  
8809 Roosevelt Way NE, Seattle, WA 98115  
(206) 250-7367

DISCLAIMER: The information on the following pages has been secured from sources believed to be reliable, however, no representations are made to its accuracy. Prospective tenants or buyers should consult their professional advisors and conduct their own independent investigation. Properties are subject to change in price and/or availability without notice.

FOR LEASE

## Town Centre Village

10240 Bridgeport Way SW Lakewood, WA 98499

Rob Gasca


Cell: 425-766-3054

Robgasca@mapleleafmgt.com

Alex Ardiente

Cell: 425-273-3386

alex@mapleleafmgt.com



Versatile retail spaces in the heart of Lakewood! Town Centre Village is a multi-family, mixed use building with retail spaces on the ground level and 37 residential units on the second and third floor. Minutes from Interstate 5 and Highway 512 within close proximity to McChord Airport and Lakewood Town Center. This property has high visibility from Bridgeport Way, with an average of 25,674 cars passing by daily, creating a great opportunity for any type of retail use. All spaces have accessible floorplans with HVAC access throughout. Units 110-111 are in grey shell condition, adaptable for any type of business buildout. Units 104-105 are in white shell condition containing 1,480 total square feet and can be leased together or separate. Café, convenience store, professional services, and food/beverage would be a great fit at this property!

**Rob Gasca Real Estate Group**  
8809 Roosevelt Way NE, Seattle, WA 98115  
(206) 250-7367

DISCLAIMER: The information on the following pages has been secured from sources believed to be reliable, however, no representations are made to its accuracy. Prospective tenants or buyers should consult their professional advisors and conduct their own independent investigation. Properties are subject to change in price and/or availability without notice.



FOR LEASE

## Town Centre Village

10240 Bridgeport Way SW Lakewood, WA 98499

Rob Gasca

Cell: 425-766-3054

Robgasca@mapleleafmgt.com

Alex Ardiente

Cell: 425-273-3386

alex@mapleleafmgt.com



Unit	SF	\$/SF	Estimated NNN	Terms
104-105	663-1,480	\$14	\$5.95	Negotiable
110-111	1,000-2,396	\$14	\$5.95	Negotiable

**Rob Gasca Real Estate Group**  
8809 Roosevelt Way NE, Seattle, WA 98115  
(206) 250-7367

DISCLAIMER: The information on the following pages has been secured from sources believed to be reliable, however, no representations are made to its accuracy. Prospective tenants or buyers should consult their professional advisors and conduct their own independent investigation. Properties are subject to change in price and/or availability without notice.



FOR LEASE

# Town Centre Village

10240 Bridgeport Way SW Lakewood, WA 98499

# 104-105 Floorplans

Rob Gasca

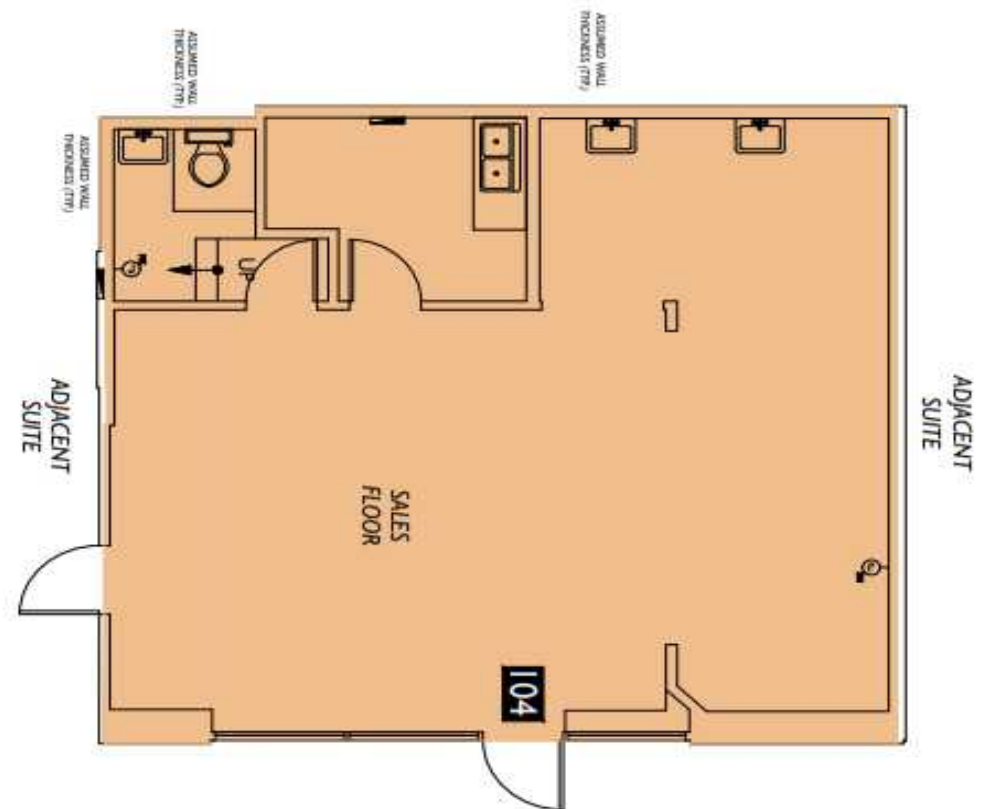
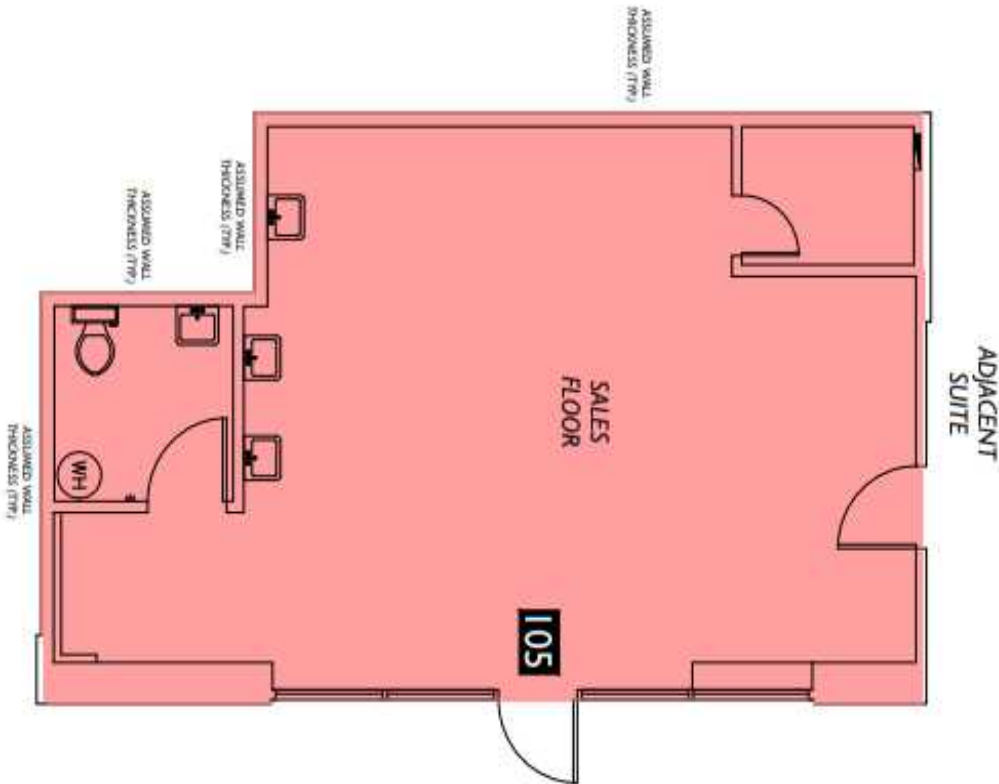
Cell: 425-766-3054

Robgasca@mapleleafmgt.com

Alex Ardiente

Cell: 425-273-3386

alex@mapleleafmgt.com



**Rob Gasca Real Estate Group**  
8809 Roosevelt Way NE, Seattle, WA 98115  
(206) 250-7367

DISCLAIMER: The information on the following pages has been secured from sources believed to be reliable, however, no representations are made to its accuracy. Prospective tenants or buyers should consult their professional advisors and conduct their own independent investigation. Properties are subject to change in price and/or availability without notice.

FOR LEASE

# Town Centre Village

10240 Bridgeport Way SW Lakewood, WA 98499

# Units 104-105

Rob Gasca

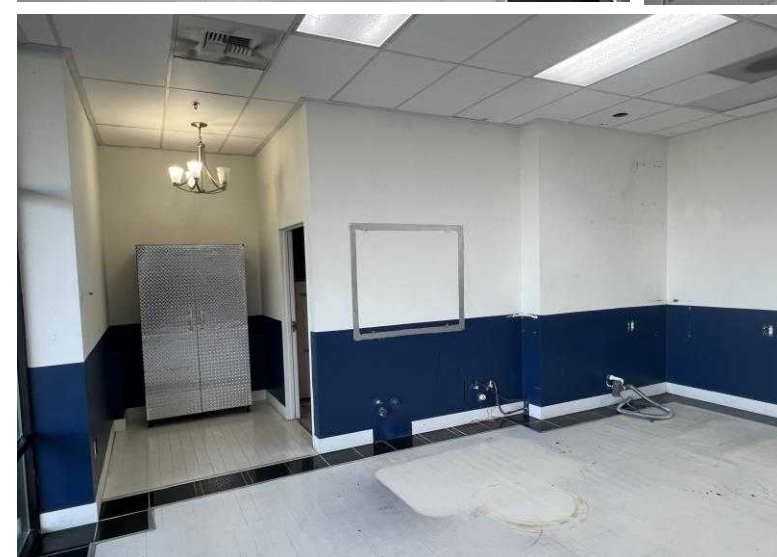
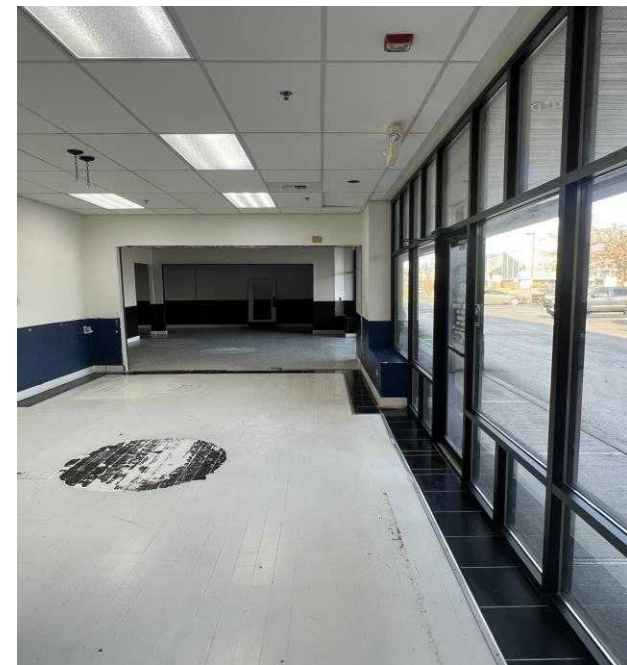
Cell: 425-766-3054

Robgasca@mapleleafmgt.com

Alex Ardiente

Cell: 425-273-3386

alex@mapleleafmgt.com



**Rob Gasca Real Estate Group**  
8809 Roosevelt Way NE, Seattle, WA 98115  
(206) 250-7367

DISCLAIMER: The information on the following pages has been secured from sources believed to be reliable, however, no representations are made to its accuracy. Prospective tenants or buyers should consult their professional advisors and conduct their own independent investigation. Properties are subject to change in price and/or availability without notice.

FOR LEASE

# Town Centre Village

10240 Bridgeport Way SW Lakewood, WA 98499

# 110-111 Floorplans

Rob Gasca

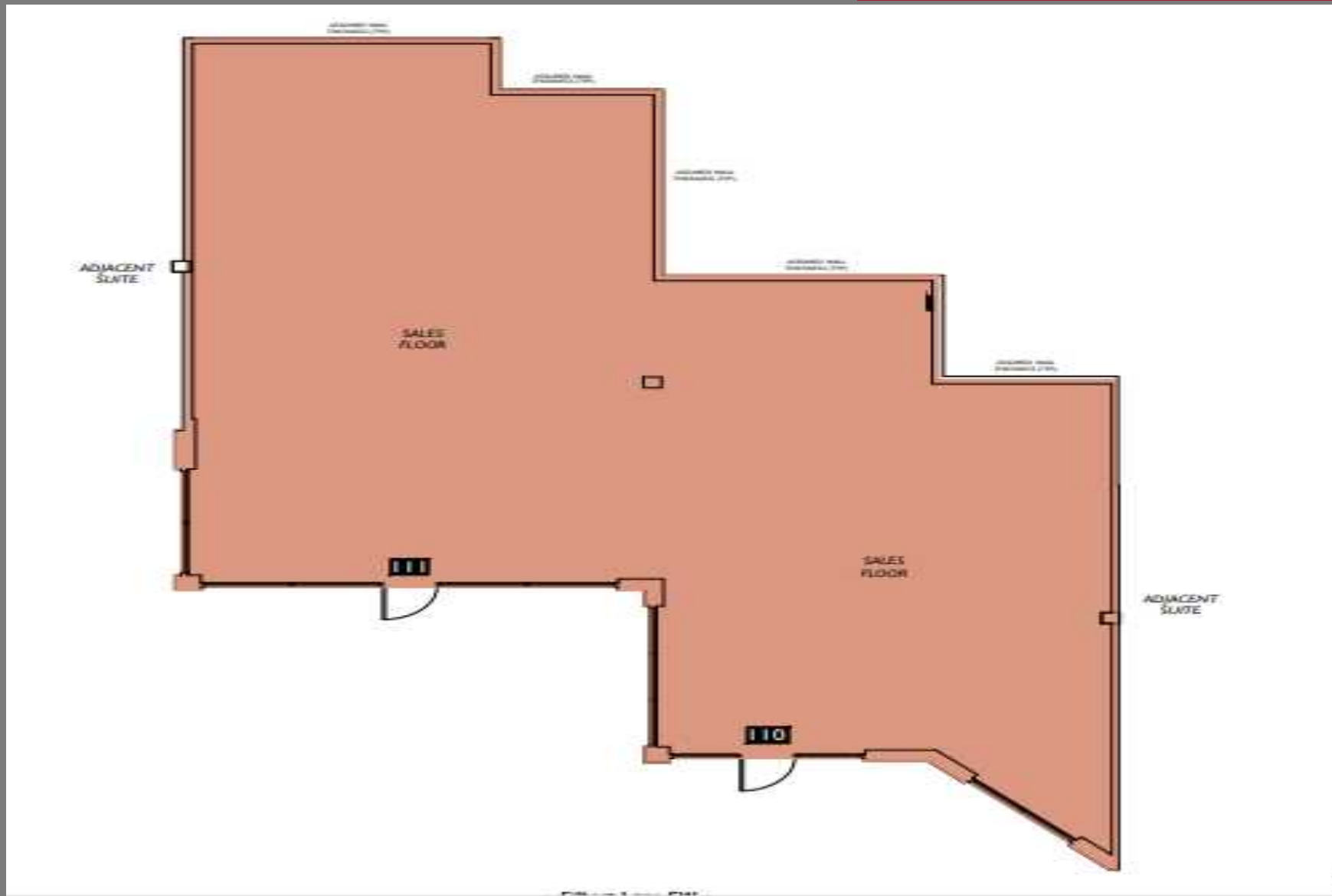
Cell: 425-766-3054

Robgasca@mapleleafmgt.com

Alex Ardiente

Cell: 425-273-3386

alex@mapleleafmgt.com



**Rob Gasca Real Estate Group**  
8809 Roosevelt Way NE, Seattle, WA 98115  
(206) 250-7367

DISCLAIMER: The information on the following pages has been secured from sources believed to be reliable, however, no representations are made to its accuracy. Prospective tenants or buyers should consult their professional advisors and conduct their own independent investigation. Properties are subject to change in price and/or availability without notice.

FOR LEASE

# Town Centre Village

10240 Bridgeport Way SW Lakewood, WA 98499

# Units 110-111

Rob Gasca

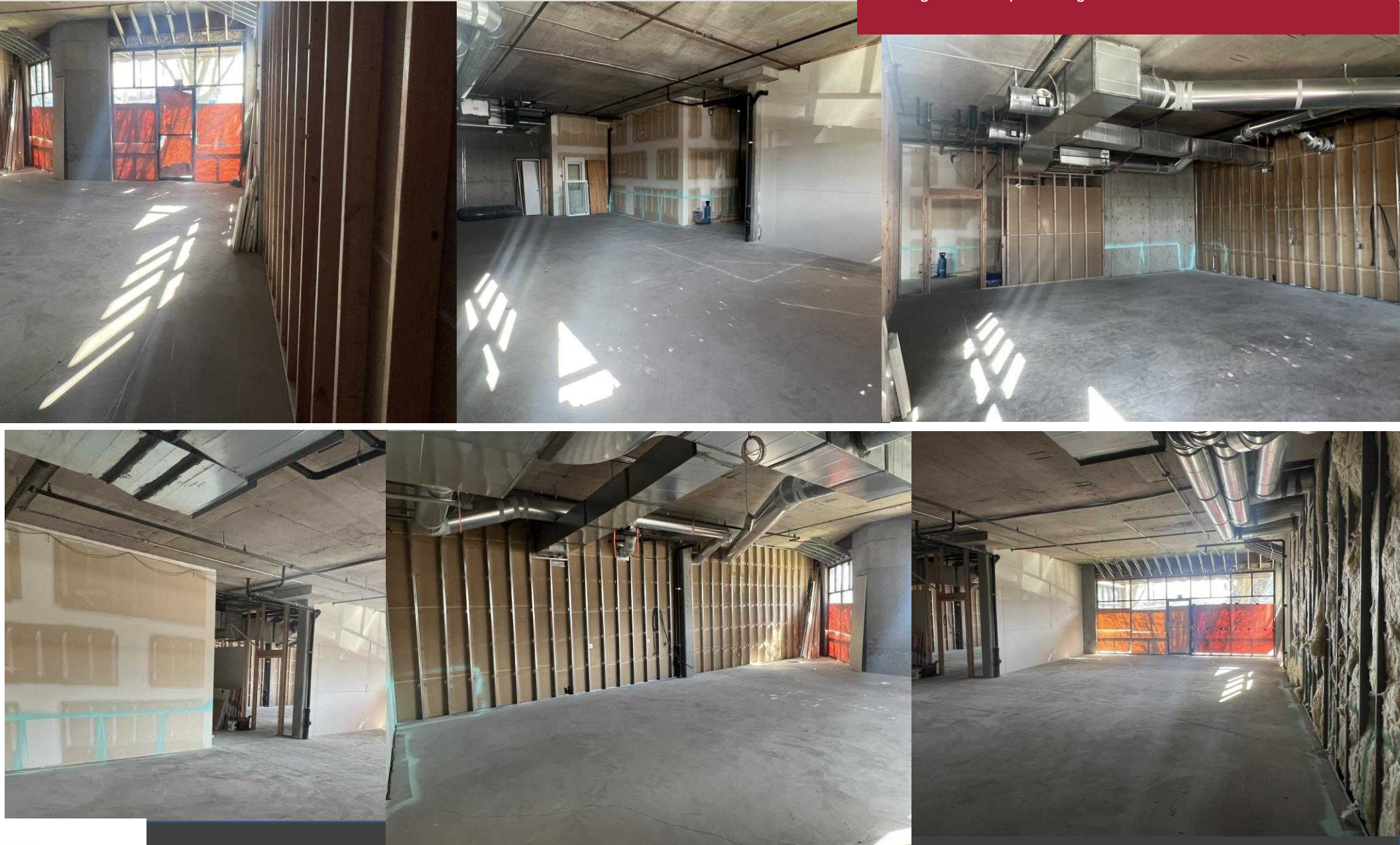
Cell: 425-766-3054

Robgasca@mapleleafmgt.com

Alex Ardiente

Cell: 425-273-3386

alex@mapleleafmgt.com



**Rob Gasca Real Estate Group**  
8809 Roosevelt Way NE, Seattle, WA 98115  
(206) 250-7367

DISCLAIMER: The information on the following pages has been secured from sources believed to be reliable, however, no representations are made to its accuracy. Prospective tenants or buyers should consult their professional advisors and conduct their own independent investigation. Properties are subject to change in price and/or availability without notice.