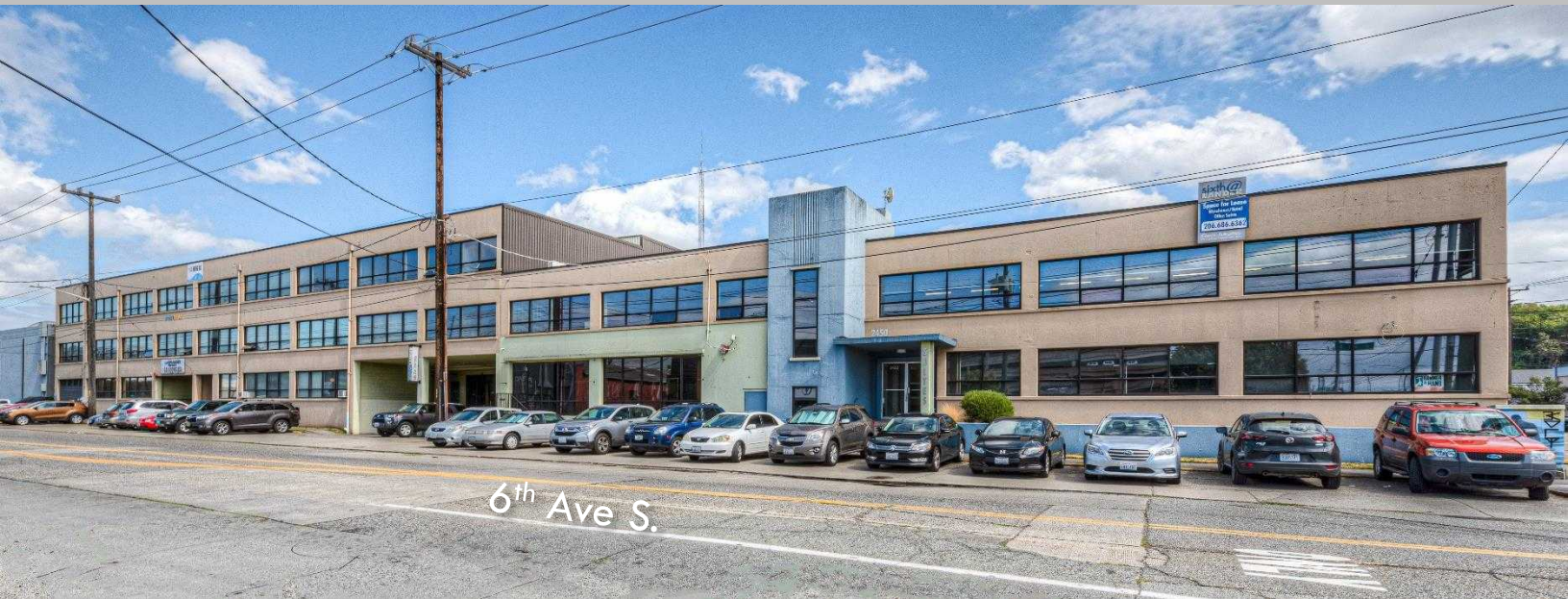


# SODO - 6<sup>th</sup> & Lander

2450 6<sup>th</sup> Ave S., Suite 302

Seattle, WA 98134



## FOR LEASE

Professional Office

CONTACT:

MARK TEMMEL

(206) 307-5726

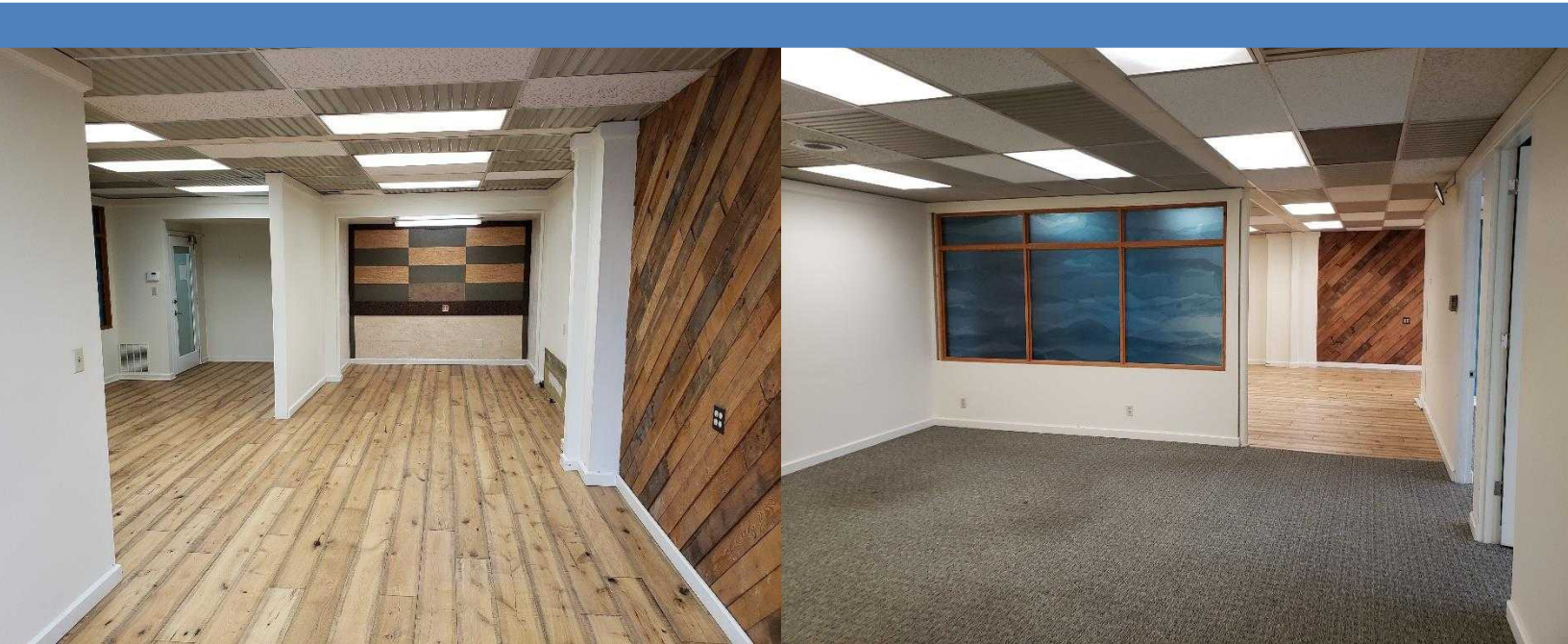
[mark@temmelre.com](mailto:mark@temmelre.com)

Temmel Real Estate

# SPACE DETAILS

Located one block from the SODO light rail station, this 1,806 sq.ft. (usable) move-in ready professional office or creative workspace is available now. Suite 302 has three private offices, tons of open co-working space, a conference room and a reception area. Asking rate of (\$15/sq.ft.) \$3,004/month + NNN for a total of \$4,158/month. NNN charges include utilities and in-suite janitorial 3x a week. There is free street parking in front of the building. Easy access to I-5, Hwy 99 and I-90.

## [VIDEO TOUR](#)



Square Feet	2,403 (BOMA)
Base Rent	\$3,004/month
NNN (\$5.76)	\$1,154/month
Available	Now
Suite	302

