

# CASCADE BUSINESS PARK

Spaces for lease in an industrial/flex park  
with immediate access to I-90

1045-1145 12TH AVE NW, ISSAQUAH, WA





FOR LEASE

# Cascade Business Park

1045-1145 12TH AVE NW, ISSAQUAH, WA



**6-BUILDING** complex, totaling ±96,000 SF office, warehouse, and flex space

**IMMEDIATE** access to I-90 and SR-900

**ONE** block away from Issaquah Transit Center

**PARK-LIKE** setting off of Newport Way, next to Tibbetts Park

**LOCALLY OWNED** and managed

**PROFESSIONALLY** maintained facilities

**FLEXIBLE** rates and configurations

**AMPLE** free parking

**WALKING** distance to restaurants, grocery stores, banks, coffee shops, and Tibbetts Park

**JAMES LEPTICH**  
425.450.1159  
james.leptich@kidder.com

**RYAN FOSTER**  
425.450.1124  
ryan.foster@kidder.com

**ZACH VALL-SPINOSA**  
425.450.1115  
zach.vallspinosa@kidder.com

[KIDDER.COM](http://KIDDER.COM)

This information supplied herein is from sources we deem reliable. It is provided without any representation, warranty, or guarantee, expressed or implied as to its accuracy. Prospective Buyer or Tenant should conduct an independent investigation and verification of all matters deemed to be material, including, but not limited to, statements of income and expenses. Consult your attorney, accountant, or other professional advisor.

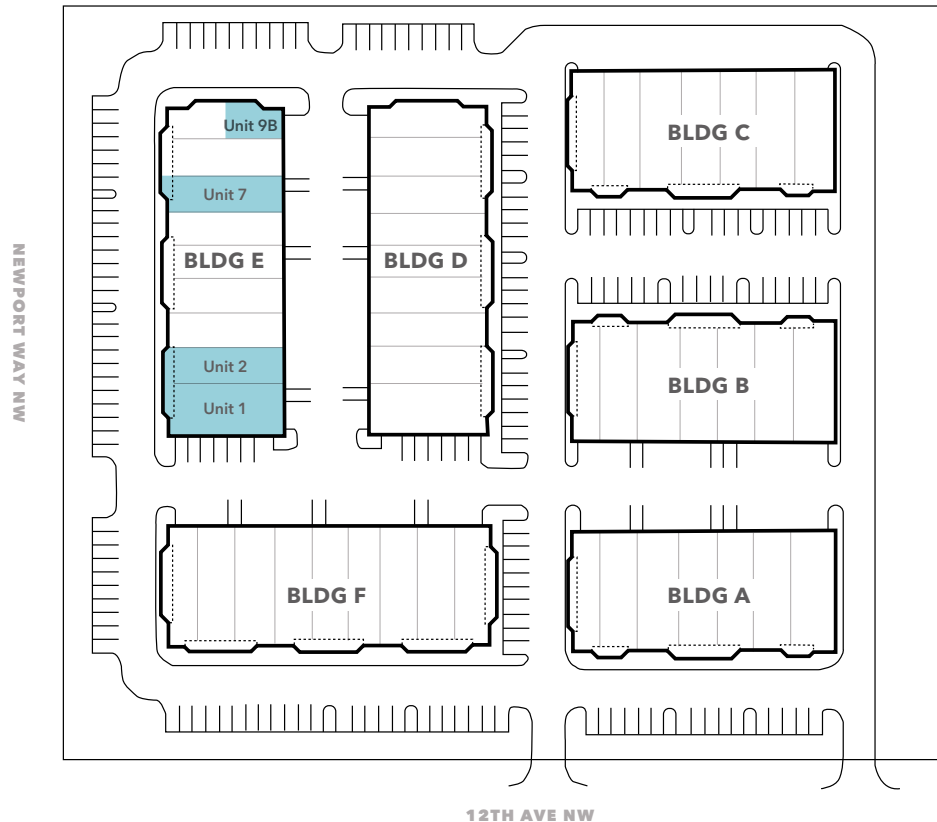
**km** Kidder Mathews

FOR LEASE

# Cascade Business Park

1045-1145 12TH AVE NW, ISSAQUAH, WA

## Site Plan



### AVAILABILITIES

Building	Unit	Total SF	Office SF	Warehouse SF	Base Rent	NNN	Total Rent + NNN
E	1	2,186 SF	2,186 SF	N/A	\$4,918.50	\$1,377.00	\$6,296.00
E	2	1,719 SF	725 SF	994 SF	\$3,122.25	\$1,083.00	\$4,205.00
E	1/2	3,905 SF	2,911 SF	994 SF	\$8,040.75	\$2,460.25	\$10,501.00
E	7	1,974 SF	1,749 SF	225 SF	\$4,273.00	\$1,244.00	\$5,516.00
E	9B	1,093 SF	1,093 SF	N/A	\$2,569.00	\$689.00	\$3,257.00

KIDDER.COM

This information supplied herein is from sources we deem reliable. It is provided without any representation, warranty, or guarantee, expressed or implied as to its accuracy. Prospective Buyer or Tenant should conduct an independent investigation and verification of all matters deemed to be material, including, but not limited to, statements of income and expenses. Consult your attorney, accountant, or other professional advisor.

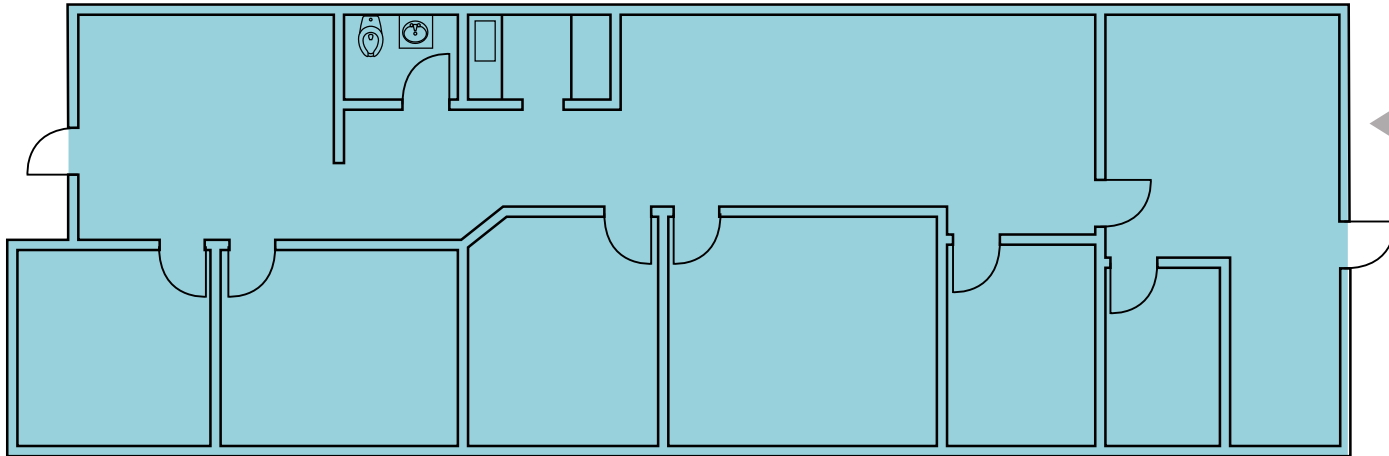


**FOR LEASE**

# Cascade Business Park

1045-1145 12TH AVE NW, ISSAQUAH, WA

## Building E - Unit 1



**2,186**

TOTAL SF

**2,186/0**

OFFICE / WAREHOUSE SF

**\$4,918.50**

BASE RENT

**\$1,377.00**

NNN

**\$6,296.00**

TOTAL RENT + NNN

■ OFFICE ■ WAREHOUSE ▲ GRADE LEVEL



[KIDDER.COM](http://KIDDER.COM)

This information supplied herein is from sources we deem reliable. It is provided without any representation, warranty, or guarantee, expressed or implied as to its accuracy. Prospective Buyer or Tenant should conduct an independent investigation and verification of all matters deemed to be material, including, but not limited to, statements of income and expenses. Consult your attorney, accountant, or other professional advisor.

**km** Kidder Mathews

**FOR LEASE**

# Cascade Business Park

1045-1145 12TH AVE NW, ISSAQUAH, WA

## Building E - Unit 2



■ OFFICE   ■ WAREHOUSE   ▲ GRADE LEVEL

**1,719**

TOTAL SF

**725/994**

OFFICE / WAREHOUSE SF

**\$3,122.25**

BASE RENT

**\$1,083.00**

NNN

**\$4,205.00**

TOTAL RENT + NNN

[KIDDER.COM](http://KIDDER.COM)

This information supplied herein is from sources we deem reliable. It is provided without any representation, warranty, or guarantee, expressed or implied as to its accuracy. Prospective Buyer or Tenant should conduct an independent investigation and verification of all matters deemed to be material, including, but not limited to, statements of income and expenses. Consult your attorney, accountant, or other professional advisor.



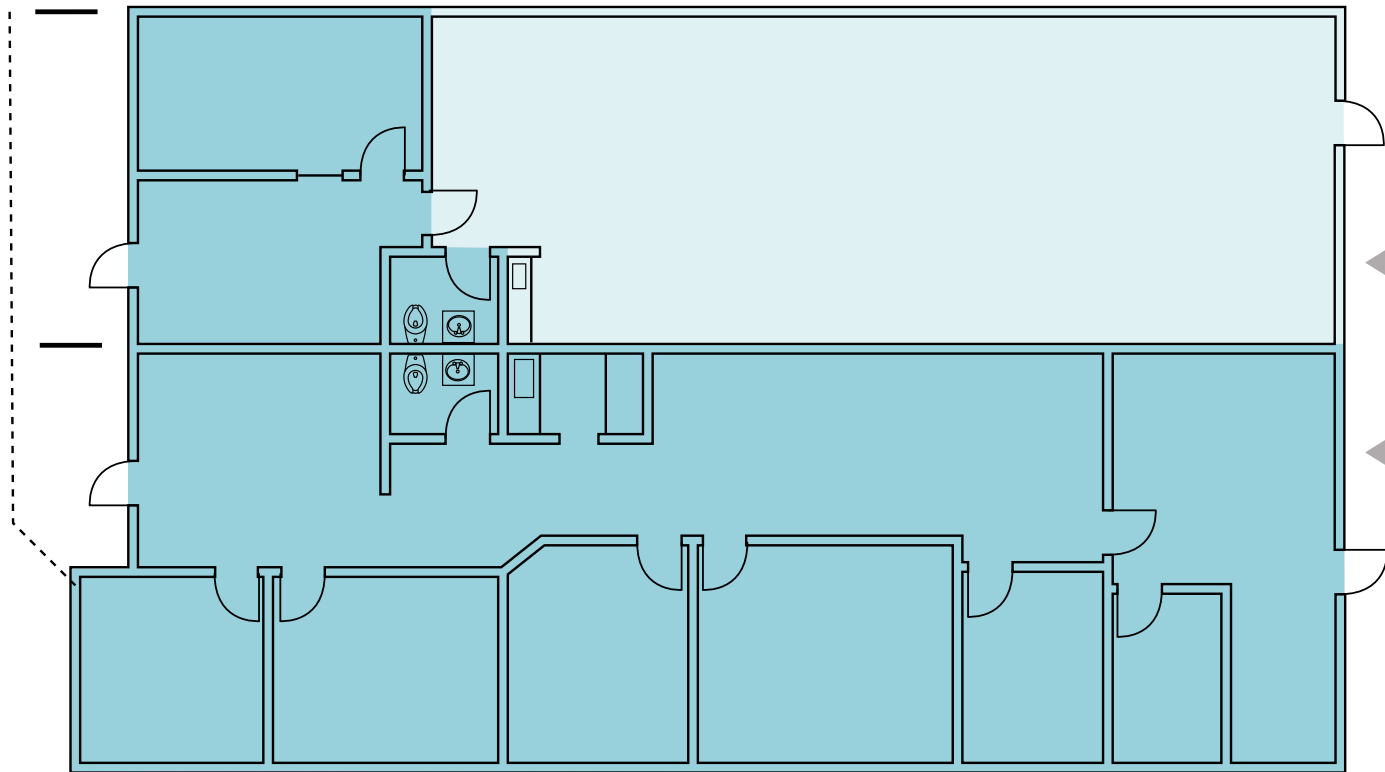
**km** Kidder Mathews

**FOR LEASE**

# Cascade Business Park

1045-1145 12TH AVE NW, ISSAQUAH, WA

## Building E - Unit 1/2



■ OFFICE   ■ WAREHOUSE   ▲ GRADE LEVEL



**3,905**

TOTAL SF

**2,911/994**

OFFICE / WAREHOUSE SF

**\$8,040.75**

BASE RENT

**\$2,460.25**

NNN

**\$10,501.00**

TOTAL RENT + NNN

[KIDDER.COM](http://KIDDER.COM)

This information supplied herein is from sources we deem reliable. It is provided without any representation, warranty, or guarantee, expressed or implied as to its accuracy. Prospective Buyer or Tenant should conduct an independent investigation and verification of all matters deemed to be material, including, but not limited to, statements of income and expenses. Consult your attorney, accountant, or other professional advisor.

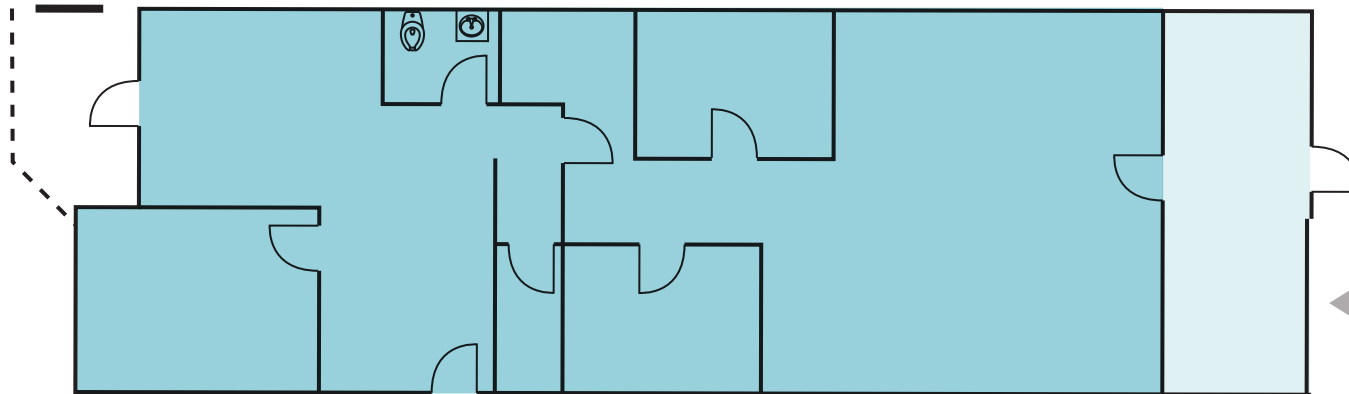
 **Kidder  
Mathews**

**FOR LEASE**

# Cascade Business Park

1045-1145 12TH AVE NW, ISSAQUAH, WA

## Building E - Unit 7



**1,974**

TOTAL SF

**1,749/225**

OFFICE / WAREHOUSE SF

**\$4,273.00**

BASE RENT

**\$1,244.00**

NNN

**\$5,516.00**

TOTAL RENT + NNN

■ OFFICE   ■ WAREHOUSE   ▲ GRADE LEVEL



[KIDDER.COM](http://KIDDER.COM)

This information supplied herein is from sources we deem reliable. It is provided without any representation, warranty, or guarantee, expressed or implied as to its accuracy. Prospective Buyer or Tenant should conduct an independent investigation and verification of all matters deemed to be material, including, but not limited to, statements of income and expenses. Consult your attorney, accountant, or other professional advisor.

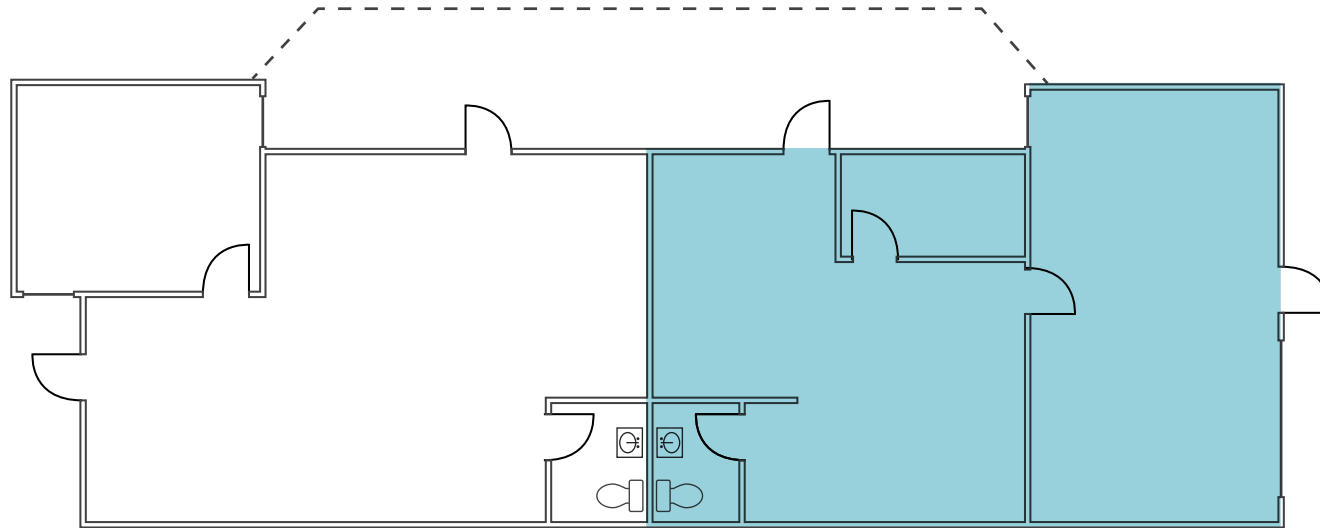
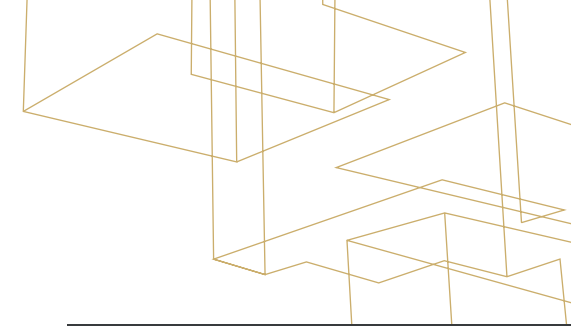
**km** Kidder Mathews

**FOR LEASE**

# Cascade Business Park

1045-1145 12TH AVE NW, ISSAQUAH, WA

## Building E - Unit 9B



**1,093**

TOTAL SF (OFFICE ONLY)

**\$2,569.00**

BASE RENT

**\$689.00**

NNN

**\$3,257.00**

TOTAL RENT + NNN

**05/01/24**

AVAILABLE

■ OFFICE ■ WAREHOUSE



[KIDDER.COM](http://KIDDER.COM)

This information supplied herein is from sources we deem reliable. It is provided without any representation, warranty, or guarantee, expressed or implied as to its accuracy. Prospective Buyer or Tenant should conduct an independent investigation and verification of all matters deemed to be material, including, but not limited to, statements of income and expenses. Consult your attorney, accountant, or other professional advisor.

**km** Kidder Mathews



FOR LEASE

# Cascade Business Park

1045-1145 12TH AVE NW, ISSAQUAH, WA



KIDDER.COM

This information supplied herein is from sources we deem reliable. It is provided without any representation, warranty, or guarantee, expressed or implied as to its accuracy. Prospective Buyer or Tenant should conduct an independent investigation and verification of all matters deemed to be material, including, but not limited to, statements of income and expenses. Consult your attorney, accountant, or other professional advisor.

**km** Kidder Mathews