

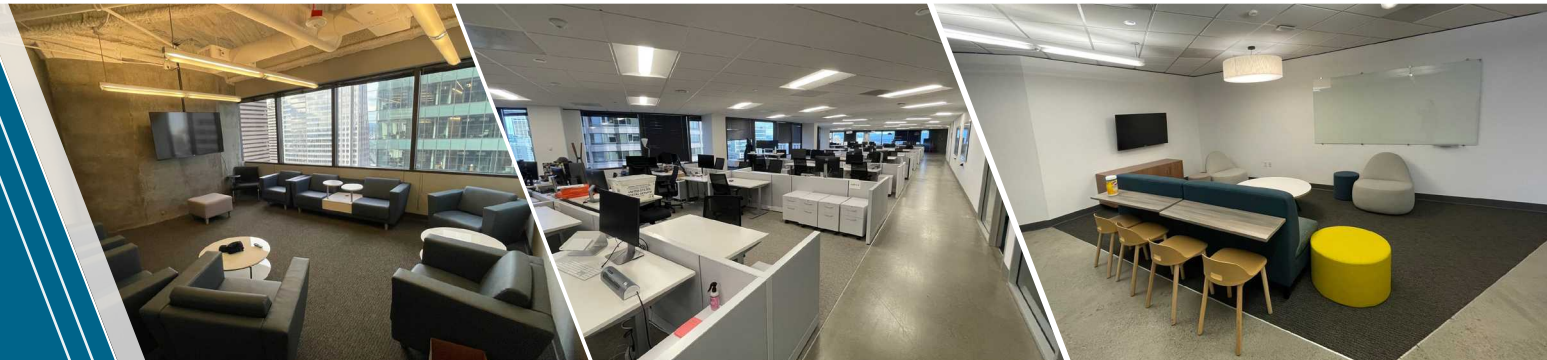


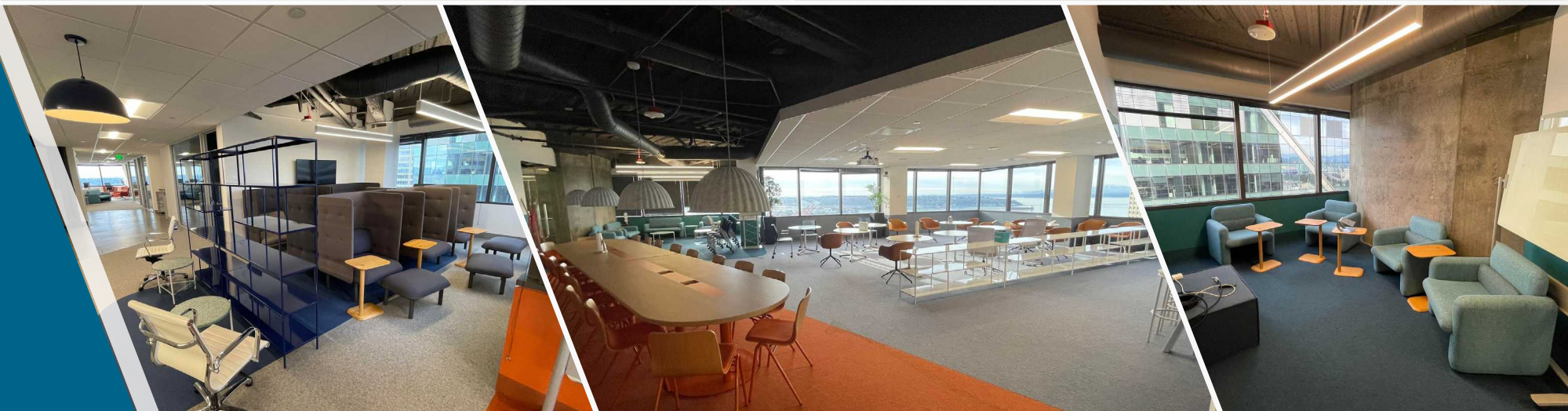
701

5TH AVENUE
SEATTLE, WASHINGTON

CREATIVE PLUG
& PLAY SUBLEASE

NEWMARK





- » Plug & play with furniture available
- » Full floor with open plan, multiple kitchen spaces, and perimeter rooms with seating
- » Unobstructed views of Elliott Bay, Mount Rainier, and the Seattle skyline
- » Newly renovated atrium and access to the Columbia Tower Club, located on the 75th and 76th floors
- » Exceptional access to I-5, I-90, bus, light rail, transit tunnel and Seattle's ferry terminal
- » Fitness center with showers, lockers, and bike storage
- » Sky lobby on Floor 40 with conference center

FLOOR 23

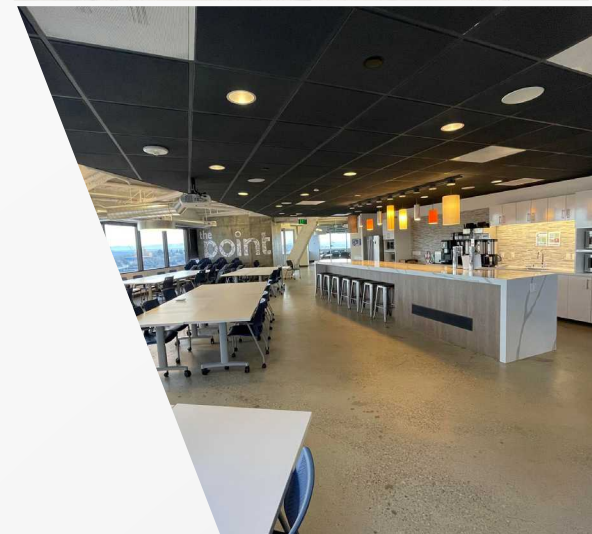
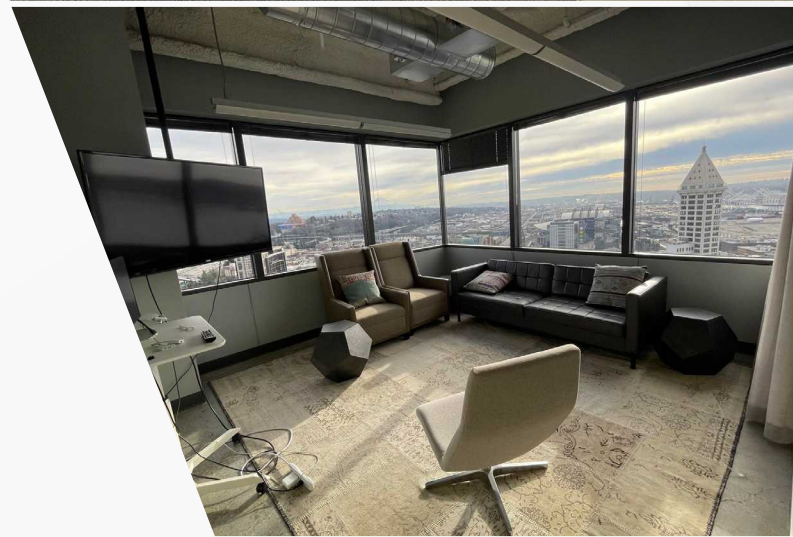
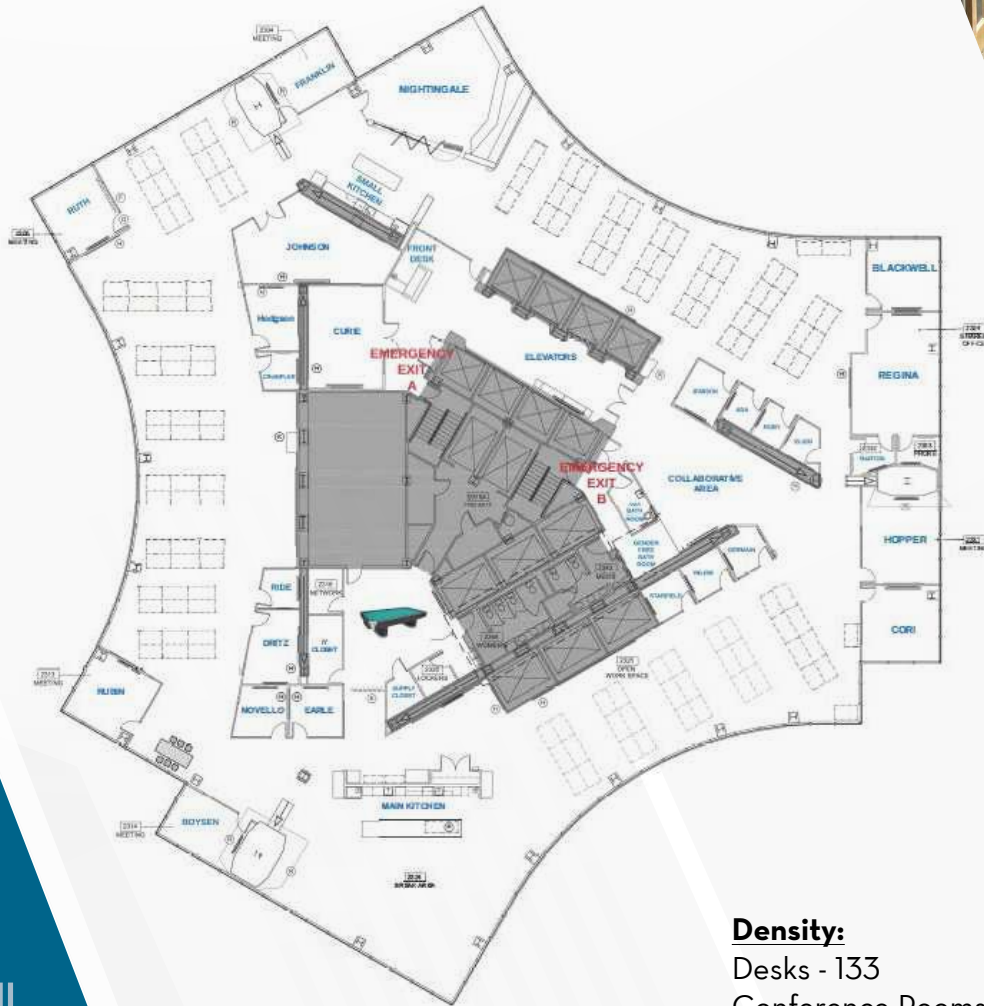
22,913 SF

Available Now

Expiration: October 2027



VIEW MATTERPORT
VIRTUAL TOUR



Density:

Desks - 133

Conference Rooms - 24

701

5TH AVENUE
SEATTLE, WASHINGTON

FLOOR 25

22,915 SF

Available Now

Expiration: March 2030



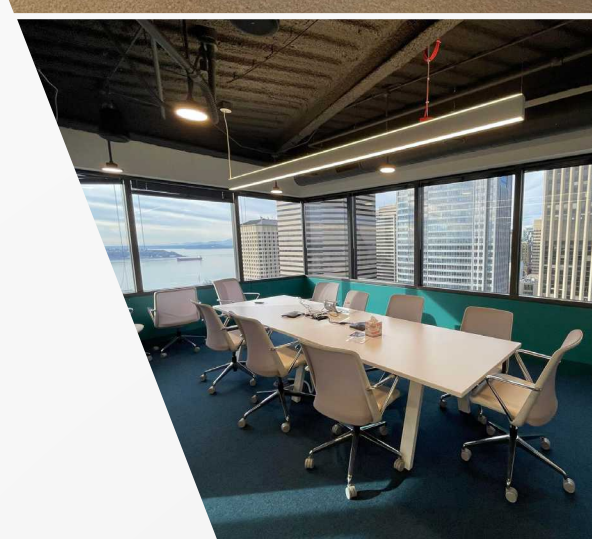
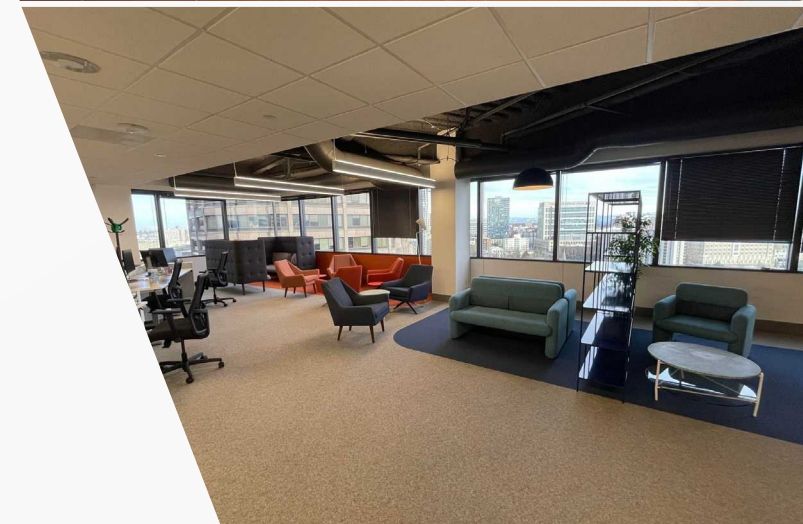
Density:

Desks - 129

Phone/Private Rooms - 13

Conference Rooms - 10

Collaborative Stations - 4



5TH AVENUE
SEATTLE, WASHINGTON



701

5TH AVENUE
SEATTLE, WASHINGTON

NEWMARK

The information contained herein has been obtained from sources deemed reliable but has not been verified and no guarantee, warranty or representation, either express or implied, is made with respect to such information. Terms of sale or lease and availability are subject to change or withdrawal without notice. MP-022.01/24

CHARLIE FARRA

Senior Managing Director
206-999-2928
charlie.farra@nmrk.com

DANIEL SEGER

Senior Managing Director
206.293.9036
daniel.seger@nmrk.com

LEVI BUNDRANT

Associate
425-409-7405
levi.bundrant@nmrk.com

ED MAO

Associate
310-694-7191
edward.mao@nmrk.com