

SODO - 6th & Lander

2450 6th Ave S., Units 49, 50 & 51
Seattle, WA 98134



FOR
LEASE

Industrial Warehouse

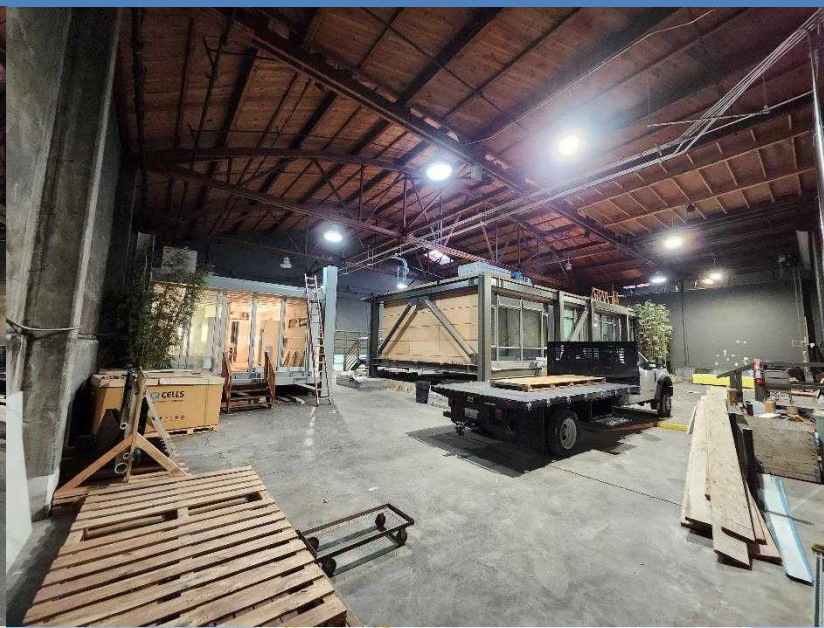
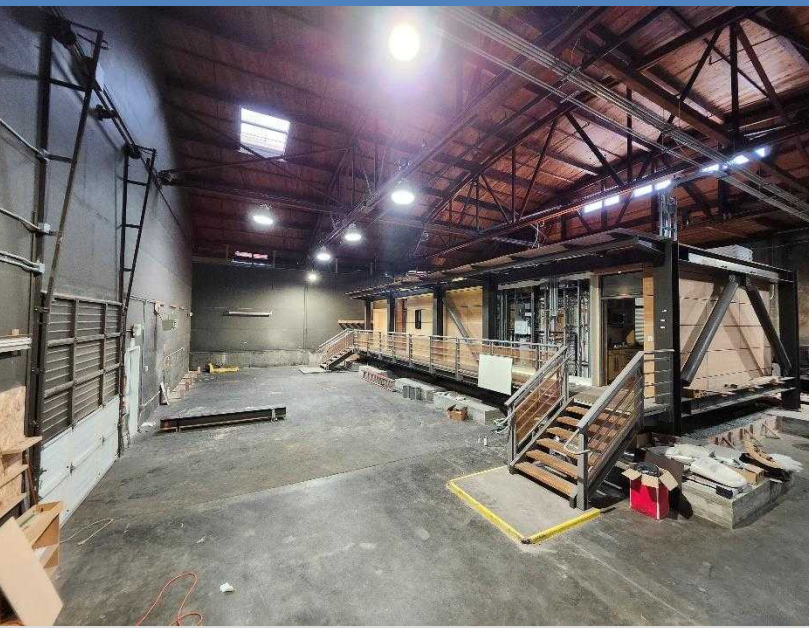
CONTACT:

MARK TEMMEL
(206) 307-5726
mark@temmelre.com
Temmel Real Estate

SPACE DETAILS

Industrial warehouse space available now. Units 49, 50 & 51 is 6,858 sq.ft. (usable). The space is roughly 90'x78' and is sprinklered. Access to the space is via two very large exterior drive-in doors (18'x17' & 21'x17') or interior roll door (10'x10") with access to the shared loading dock. Ceiling height varies with the lowest being 21'7" and the highest 30'+. The space has 150 amps of 480v/208v. Interior structures can be removed to open the space up. Asking rate of \$1.25/sq.ft. + NNN (0.48¢). NNN charges include utilities. Located one block from the SODO light rail station. There is free street parking around the building. Easy access to I-5, Hwy 99, and I-90.

[VIDEO TOUR](#)



| | |
|-------------|--------------|
| Square Feet | 8,420 (BOMA) |
| Base Rent | \$1.25/SF |
| NNN | 0.48¢/SF |
| Available | Now |
| Units | 49, 50 & 51 |

