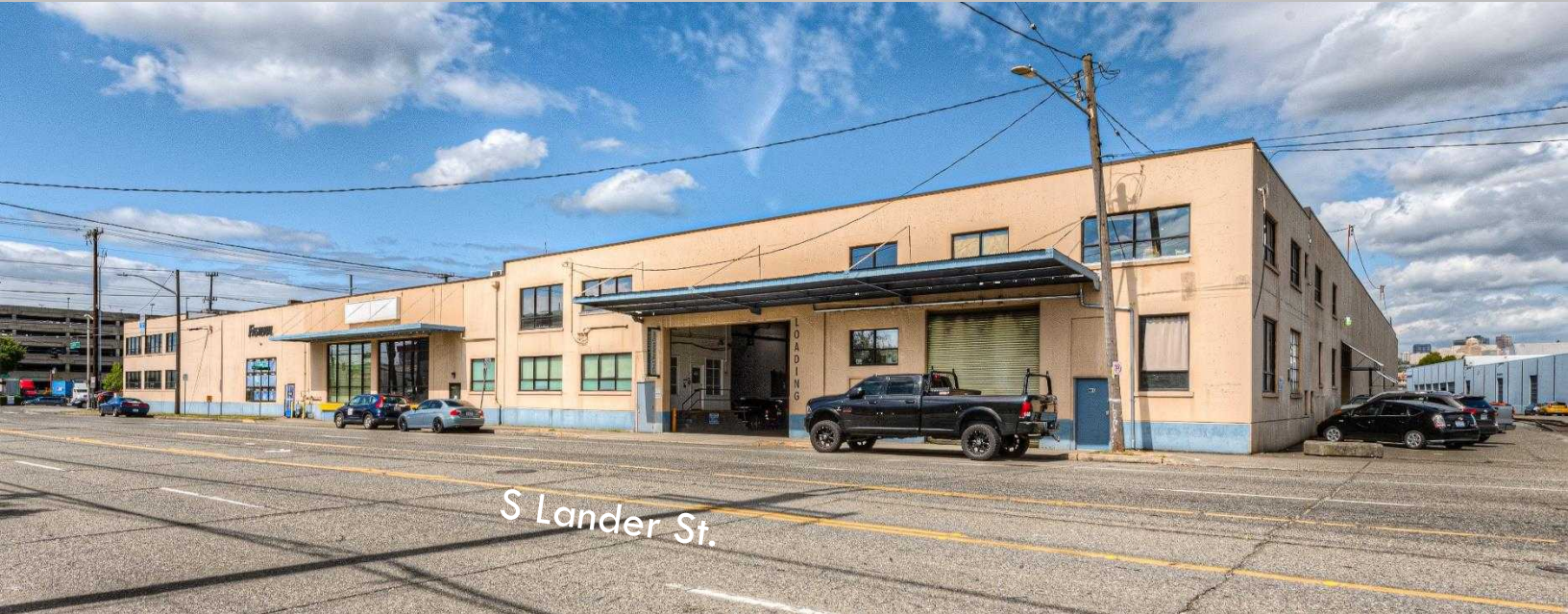


SODO - 6th & Lander

2450 6th Ave S., Unit 40C

Seattle, WA 98134



FOR
SUBLEASE
Industrial Warehouse

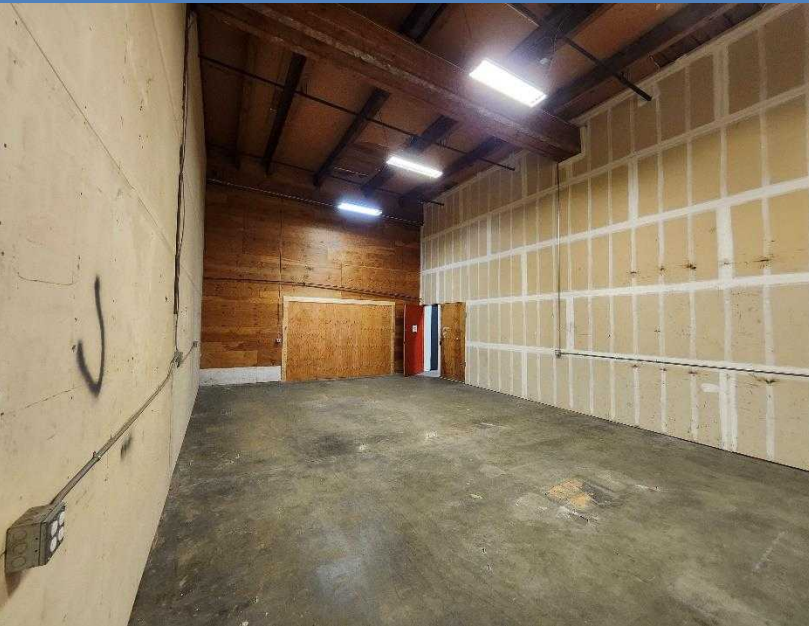
CONTACT:

MARK TEMMEL
(206) 307-5726
mark@temmelre.com
Temmel Real Estate

SPACE DETAILS

Industrial warehouse space available now. Unit 40C is 900 sq.ft. with the ability to expand to 1,500 sq.ft. (BOMA). The space is roughly 35'x23' and the sublease runs through June 2025. Access to the space is through a swinging door that is ~8'x8' via a common hallway. Ceiling height is 20'6" with beams at 17'10". Asking rate for the 900 sq.ft. is \$2,000/month gross which includes utilities. The building is located one block from the SODO light rail station. There is free street parking around the building. Easy access to I-5, Hwy 99, and I-90.

[VIDEO TOUR](#)



Square Feet	900 (BOMA)
Gross Rent	\$2,000/month
Term	Through 6/30/2025
Available	Now
Unit	40C

