



LESTER PROFESSIONAL PLAZA

Class A Medical / Dental Building

km Kidder
Mathews

FOR LEASE | 1800 116TH AVE NE | BELLEVUE, WA

FOR LEASE

Lester Professional Plaza

1800 116TH AVE NE | BELLEVUE, WA



Suite 104: 1,121 RSF

Lease rate \$33/SF, NNN

Therapy build-out in place

First floor corner space

Located just north of Children's Hospital, Overlake Medical Center and Kaiser Permanente

Abundant surface and covered parking available

Can be made available with 30-day notice

KEITH HONSBERGER

Senior Vice President

425.450.1107

keith.honsberger@kiddier.com

ALEX ANDREA

Senior Associate

425.450.1163

alex.andrea@kiddier.com

KIDDER.COM

This information supplied herein is from sources we deem reliable. It is provided without any representation, warranty, or guarantee, expressed or implied as to its accuracy. Prospective Buyer or Tenant should conduct an independent investigation and verification of all matters deemed to be material, including, but not limited to, statements of income and expenses. Consult your attorney, accountant, or other professional advisor.

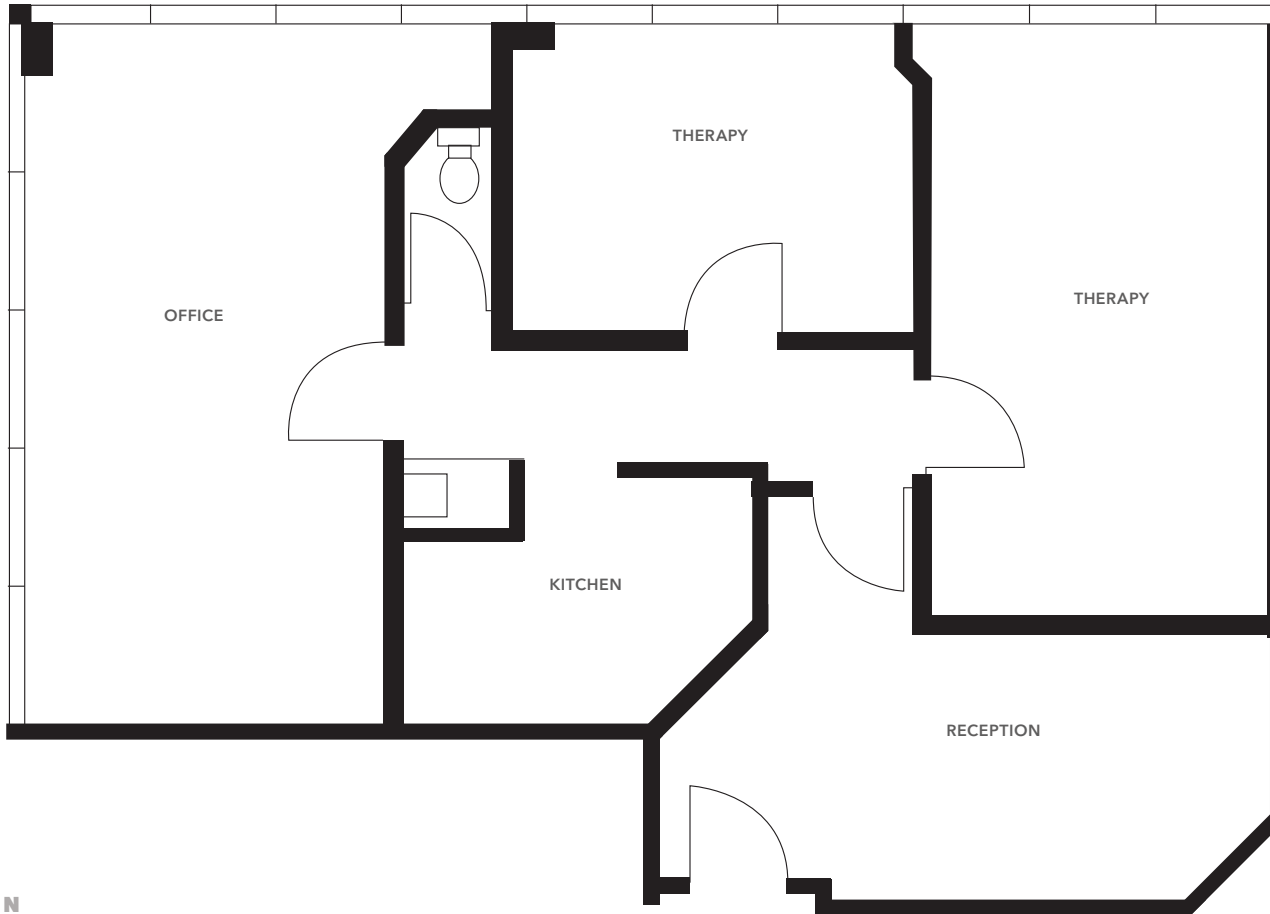


FOR LEASE

Lester Professional Plaza

1800 116TH AVE NE | BELLEVUE, WA

Suite 104



1,121

SQUARE FEET

\$33/SF

LEASE RATE, NNN

BUILDING TENANTS INCLUDE:

Root Hair of WA

Bellevue Endodontics

Bellevue Chiropractic

Eastside Prosthodontics

KEITH HONSBERGER

Senior Vice President

425.450.1107

keith.honsberger@kidder.com

ALEX ANDREA

Senior Associate

425.450.1163

alex.andrea@kidder.com

KIDDER.COM

This information supplied herein is from sources we deem reliable. It is provided without any representation, warranty, or guarantee, expressed or implied as to its accuracy. Prospective Buyer or Tenant should conduct an independent investigation and verification of all matters deemed to be material, including, but not limited to, statements of income and expenses. Consult your attorney, accountant, or other professional advisor.

