

# FOR LEASE

## THE WAREHOUSE BUILDING

111 Avenue C Snohomish, WA 98290



### OFFERING SUMMARY

Lease Rate:	\$25.00 SF/yr (NNN)
Available SF:	1,785 SF
Lot Size:	0.09 Acres
Year Built:	1908
Renovated:	1965
Zoning:	HBD

### PROPERTY OVERVIEW

Fantastic opportunity to be part of the Downtown Snohomish Business District!

This space is on the ground floor of the historic Warehouse Building right off of 1st Street in Downtown Snohomish.

Use can be office or retail. It is currently set up for office use, and the existing cubicles can be included and configured however best suits your office needs. For retail use, the cubicle walls can be removed leaving you open space to set up as you see fit.

The building owner occupies the second floor - Rensch Engineering.

Tours by appointment only.



### PROPERTY HIGHLIGHTS

- Inviting Reception Area
- Versatile Office/Storage Area
- Two Bathrooms, One is an ADA Bathroom
- Convenient Kitchenette

**Heidi Ihde**  
425 478 7546  
heidi@hlbirealestate.com

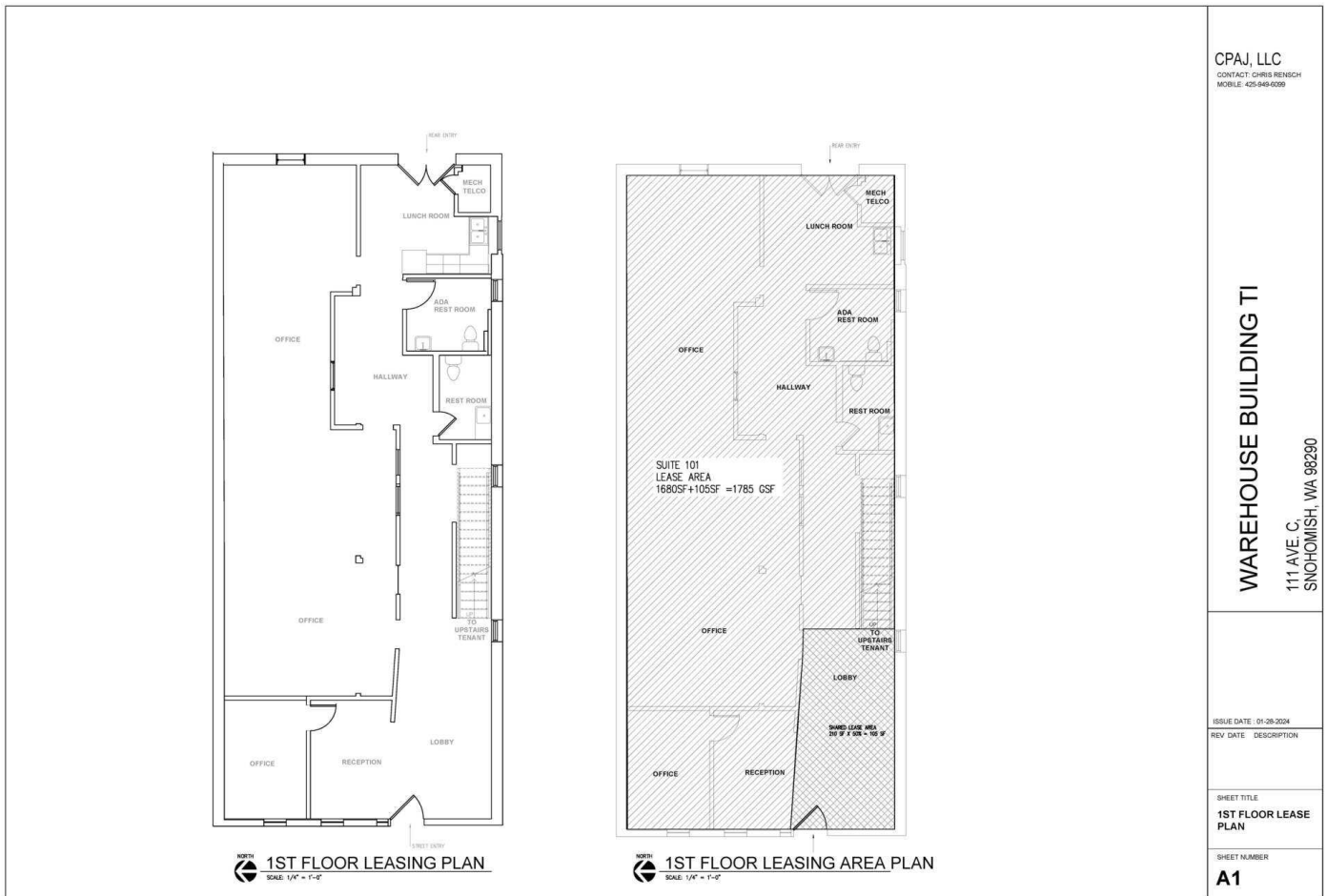


**COLDWELL BANKER  
COMMERCIAL**  
DANFORTH

# FOR LEASE

## THE WAREHOUSE BUILDING

111 Avenue C Snohomish, WA 98290



CPAJ, LLC  
CONTACT: CHRIS RENSCH  
MOBILE: 425-649-6299

WAREHOUSE BUILDING T1

111 AVE. C,  
SNOHOMISH, WA 98290

ISSUE DATE: 01-28-2024

REV. DATE DESCRIPTION

SHEET TITLE  
1ST FLOOR LEASE  
PLAN

SHEET NUMBER

A1

**Heidi Ihde**  
425 478 7546  
heidi@hlbirealestate.com

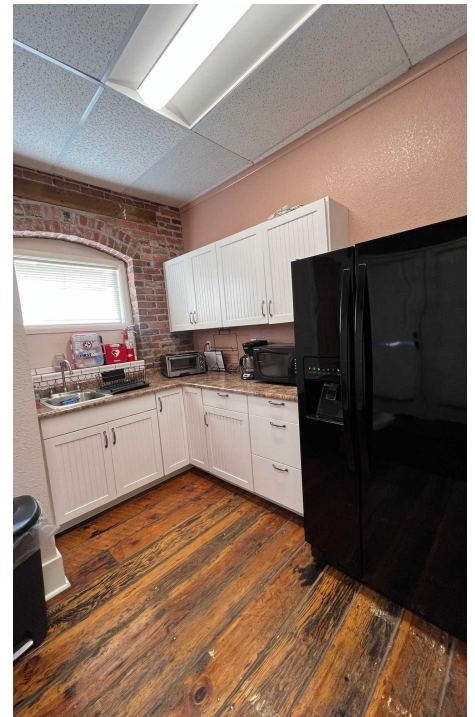
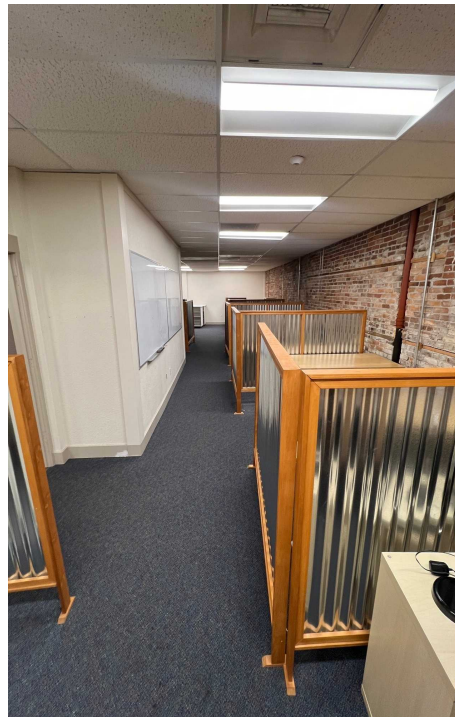
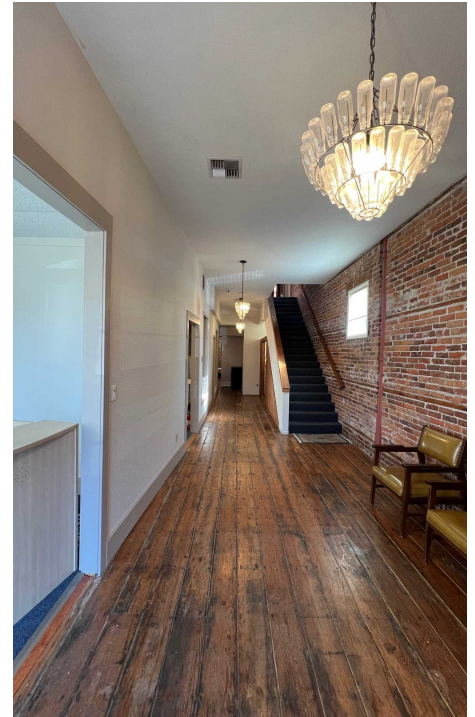


**COLDWELL BANKER  
COMMERCIAL**  
DANFORTH

# FOR LEASE

## THE WAREHOUSE BUILDING

111 Avenue C Snohomish, WA 98290



**Heidi Ihde**  
425 478 7546  
heidi@hlbirealestate.com

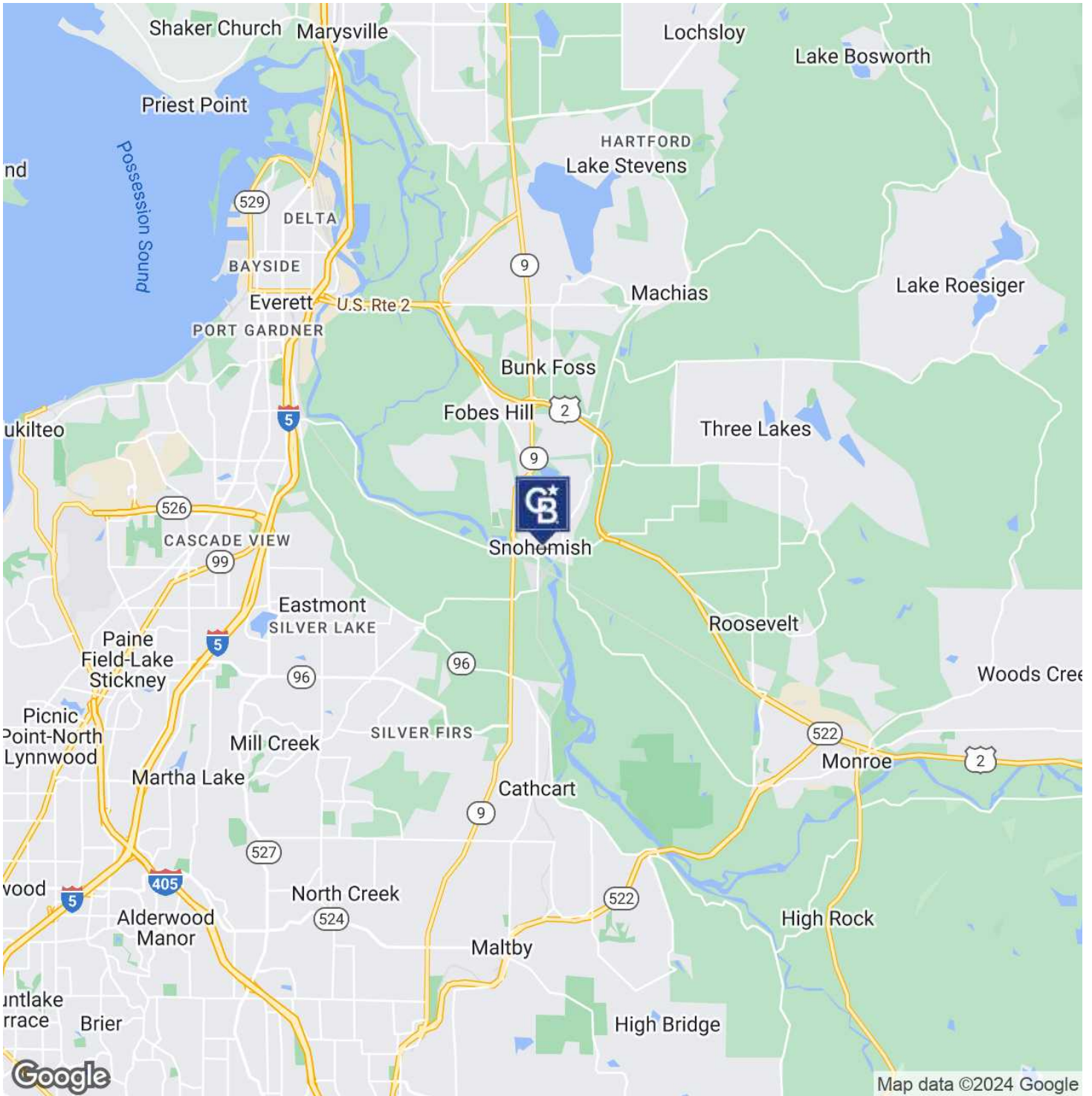


**COLDWELL BANKER  
COMMERCIAL**  
DANFORTH

# FOR LEASE

## THE WAREHOUSE BUILDING

111 Avenue C Snohomish, WA 98290



**Heidi Ihde**  
425 478 7546  
heidi@hlbirealestate.com



**COLDWELL BANKER  
COMMERCIAL**  
DANFORTH