



Sedgwick Retail

1888 SE SEDGWICK ROAD, PORT ORCHARD, WA

FOR LEASE



AVAILABLE
SUITES

**Kidder
Mathews**

BEN NORBE
253.722.1410
ben.norbe@kidder.com

This information supplied herein is from sources we deem reliable. It is provided without any representation, warranty, or guarantee, expressed or implied as to its accuracy. Prospective Buyer or Tenant should conduct an independent investigation and verification of all matters deemed to be material, including, but not limited to, statements of income and expenses. Consult your attorney, accountant, or other professional advisor.

FOR LEASE

Sedgwick Retail

1888 SE SEDGWICK ROAD, PORT ORCHARD, WA



SUITE 101 - 2,150 SF

SUITE 102 - 1,200 SF

\$32.00 PSF, plus NNN

LOCATED directly off Hwy 160 and close to hwy 16

EXISTING tenants include Quiznos and #1 Market

BEN NORBE
253.722.1410
ben.norbe@kidder.com

KIDDER.COM

This information supplied herein is from sources we deem reliable. It is provided without any representation, warranty, or guarantee, expressed or implied as to its accuracy. Prospective Buyer or Tenant should conduct an independent investigation and verification of all matters deemed to be material, including, but not limited to, statements of income and expenses. Consult your attorney, accountant, or other professional advisor.

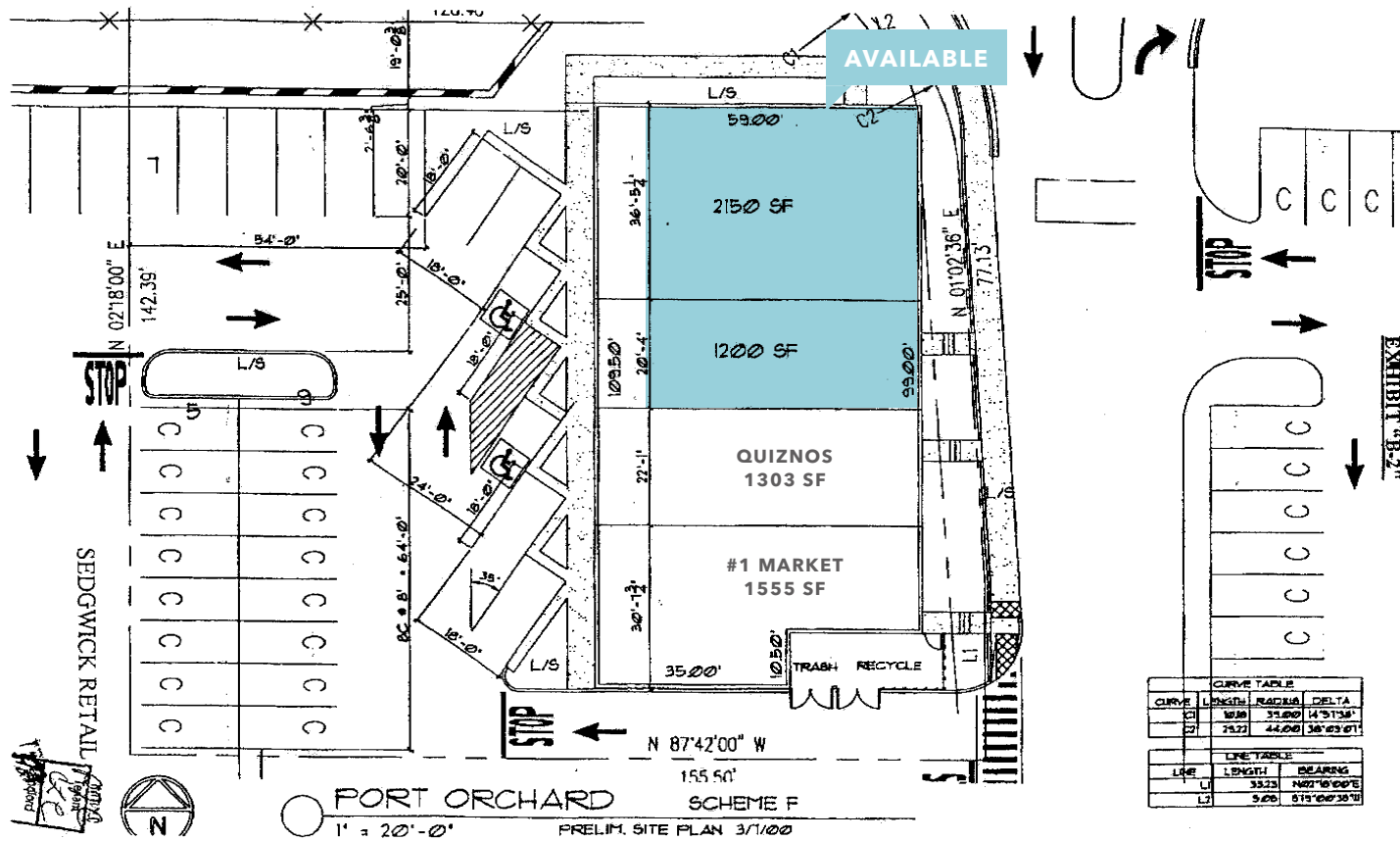
 **Kidder
Mathews**

FOR LEASE

Sedgwick Retail

1888 SE SEDGWICK ROAD, PORT ORCHARD, WA

Site Plan



2,150 SF

SUITE 101

1,200 SF

SUITE 102

\$32.00 PSF

LEASE RATE, PLUS NNN

BEN NORBE

253.722.1410

ben.norbe@kidder.com

KIDDER.COM

This information supplied herein is from sources we deem reliable. It is provided without any representation, warranty, or guarantee, expressed or implied as to its accuracy. Prospective Buyer or Tenant should conduct an independent investigation and verification of all matters deemed to be material, including, but not limited to, statements of income and expenses. Consult your attorney, accountant, or other professional advisor.

