

# SODO - 6<sup>th</sup> & Lander

2450 6<sup>th</sup> Ave S., Unit 42  
Seattle, WA 98134



# FOR LEASE

## Industrial Warehouse

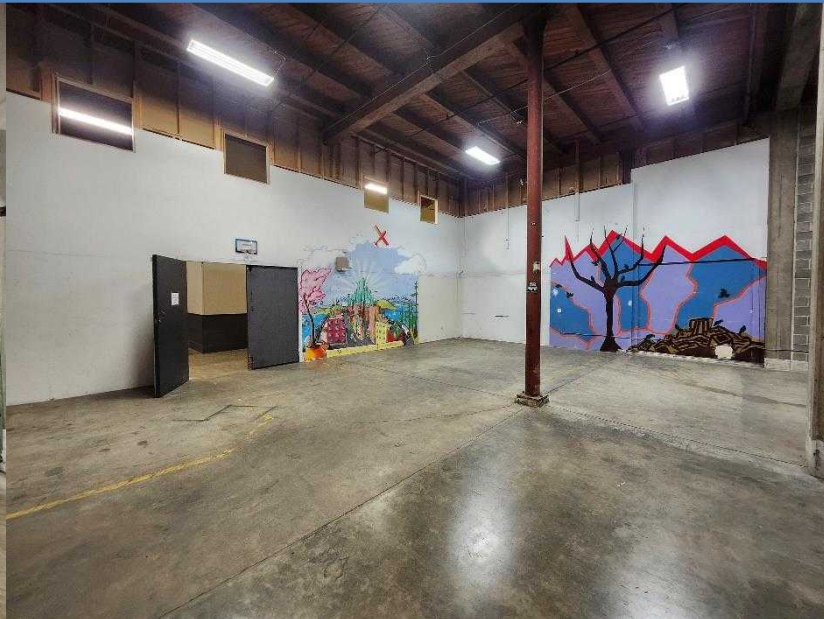
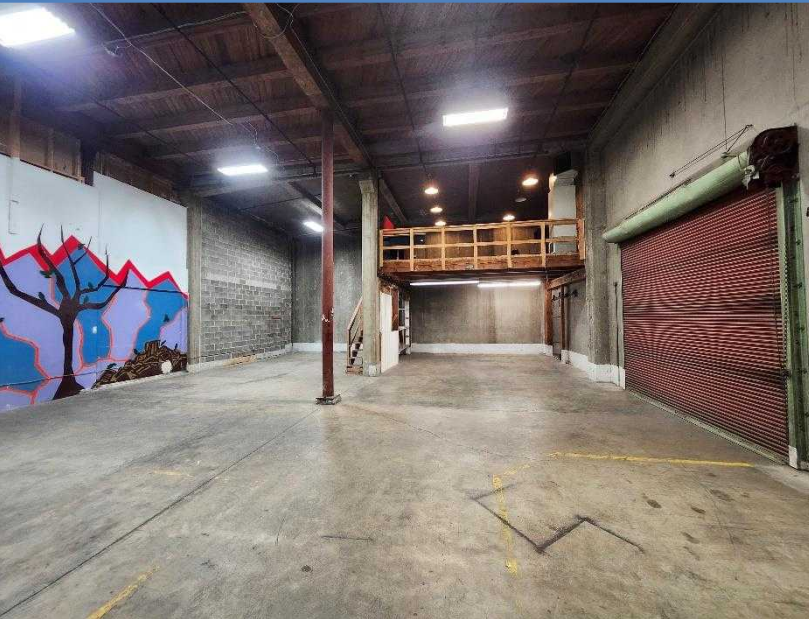
CONTACT:

MARK TEMMEL  
(206) 307-5726  
mark@temmelre.com  
Temmel Real Estate

# SPACE DETAILS

Industrial warehouse space available now. Unit 42 is 2,435 sq.ft. (usable). The space is roughly 40'x49' and includes 457 sq.ft. of mezzanine space. Access to the space is via a 12'x10' roll door or a 8'x8' swing door. Ceiling height is 21'4" and beams are 19'. The height under mezzanine is 10'. Asking rate of \$3,385/month (\$1.13/blended sq.ft.) + NNN. NNN charges include utilities. Located one block from the SODO light rail station. There is free street parking around the building. Easy access to I-5, Hwy 99, and I-90.

[VIDEO TOUR](#)



Square Feet	2,989 (BOMA)
Base Rent	\$1.13/SF (Blended)
NNN	0.48¢/SF
Available	Now
Unit	42

