

FOR LEASE

# NICKERSON BUSINESS PARK

101 NICKERSON ST, SEATTLE, WA



## Suite 150

Flex space

3,455 square feet

Open plan, high ceilings

\$26.00/SF full service

Former Martial Arts studio



**NEAR SEATTLE  
PACIFIC UNIVERSITY**



**SIGNAGE  
POSSIBLE**



**FREE PARKING**



**EXCELLENT HWY  
99 N/S ACCESS**

**KEN HIRATA**

206.296.9625

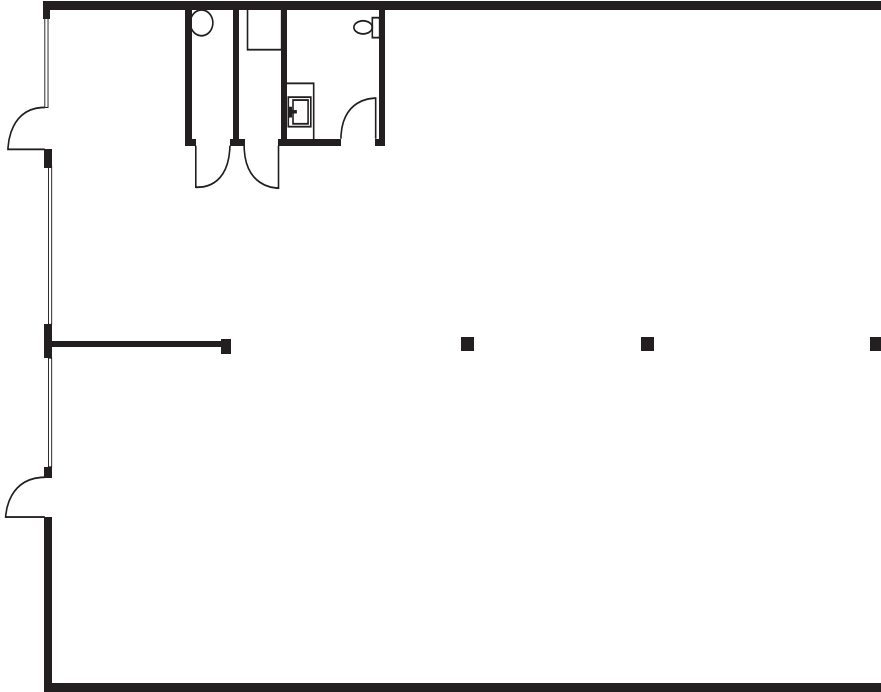
ken.hirata@kidder.com

**KIDDER.COM**

This information supplied herein is from sources we deem reliable. It is provided without any representation, warranty, or guarantee, expressed or implied as to its accuracy. Prospective Buyer or Tenant should conduct an independent investigation and verification of all matters deemed to be material, including, but not limited to, statements of income and expenses. Consult your attorney, accountant, or other professional advisor.



NICKERSON BUILDING



*3,455 SF*

AVAILABLE

*\$26.00*

LEASE RATE (SF/YR)

*4/1/2024*

AVAILABLE



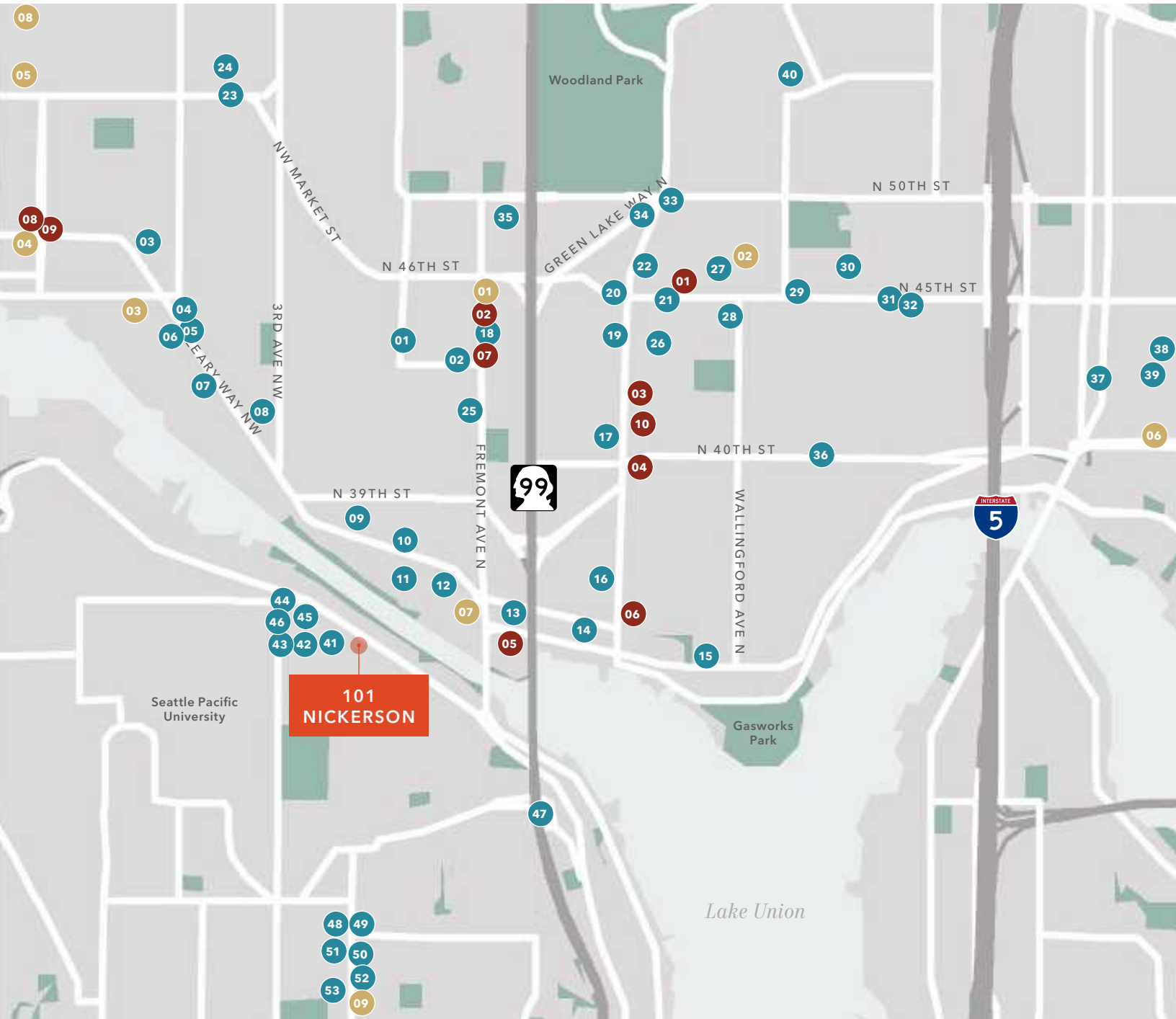
KEN HIRATA  
206.296.9625  
ken.hirata@kidder.com

**KIDDER.COM**

This information supplied herein is from sources we deem reliable. It is provided without any representation, warranty, or guarantee, expressed or implied as to its accuracy. Prospective Buyer or Tenant should conduct an independent investigation and verification of all matters deemed to be material, including, but not limited to, statements of income and expenses. Consult your attorney, accountant, or other professional advisor.



# AMENITIES MAP



**KEN HIRATA**  
206.296.9625  
ken.hirata@kidder.com

**KIDDER.COM**

This information supplied herein is from sources we deem reliable. It is provided without any representation, warranty, or guarantee, expressed or implied as to its accuracy. Prospective Buyer or Tenant should conduct an independent investigation and verification of all matters deemed to be material, including, but not limited to, statements of income and expenses. Consult your attorney, accountant, or other professional advisor.





# NICKERSON BUILDING

## EAT + DRINK

- 01 Lighthouse Roasters
- 02 Paseo Fremont
- 03 Giddy Up Burgers
- 04 Bad Jimmy's Berwing Co
- 05 4Bs - Ballard Grill & Alehouse
- 06 Hale's Brewery
- 07 Two Shoe BBQ
- 08 Frelard Pizza Company
- 09 The George & Dragon Pub
- 10 Nectar Lounge
- 11 Brouwer's Cafe
- 12 Fremont Coffee Company
- 13 Milstead & Co
- 14 Fremont Brewing Company
- 15 The Essential Baking Company
- 16 Monolin
- 17 Pagliacci Pizza
- 18 Uneeda Burger
- 19 Tutta Bella Neapolitan Pizzeria
- 20 Seattle Meowtropolitan
- 21 Tilth
- 22 Blue Star Cafe & Pub
- 23 Slate Coffee Bar
- 24 Veraci Pizza
- 25 Le Coin
- 26 Rocking Wok Taiwanese Cuisine

- 27 Molly Moon's Homemade Ice Cream
- 28 Julia's in Wallingford
- 29 The Octopus Bar
- 30 Ezell's Famous Chicken
- 31 Dick's Drive-In
- 32 Rancho Bravo Tacos
- 33 Bamboo Village
- 34 Kidd Valley
- 35 El Legendario Mexican
- 36 Irwin's Neighborhood Bakery
- 37 Portage Bay Cafe
- 38 Chipotle Mexican Grill
- 39 Starbucks
- 40 Mighty-O Donuts
- 41 206 Burger Company
- 42 Zeeks Pizza
- 43 Two Kicks coffee
- 44 Byen Bakaery
- 45 Thai Fusion Restaurant
- 46 7-Eleven
- 47 Canlis
- 48 Homegrown
- 49 Grappa
- 50 Bounty Kitchen
- 51 How to Cook a Wolf
- 52 El Mezcalito
- 53 Elliott Bay Pizza

## GROCERY + SHOPPING

- 01 Marketime Foods
- 02 QFC
- 03 Fred Meyer
- 04 Trader Joe's
- 05 Safeway
- 06 District Market
- 07 PCC Community Markets
- 08 Ballard Market
- 09 Trader Joes

## HEALTH + SERVICES

- 01 Neighborcare Health
- 02 Fremont Family Practice
- 03 Community Psychiatric Clinic
- 04 Emerald City Athletics
- 05 Anytime Ftiness
- 06 FUELhouse
- 07 The Yoga Tree
- 08 CorePower Yoga
- 09 Meridian Women's Health
- 10 Emerald City Emergency Clinic

## KEN HIRATA

206.296.9625

ken.hirata@kidder.com

## KIDDER.COM

This information supplied herein is from sources we deem reliable. It is provided without any representation, warranty, or guarantee, expressed or implied as to its accuracy. Prospective Buyer or Tenant should conduct an independent investigation and verification of all matters deemed to be material, including, but not limited to, statements of income and expenses. Consult your attorney, accountant, or other professional advisor.

