

Woodinville Corporate Center III

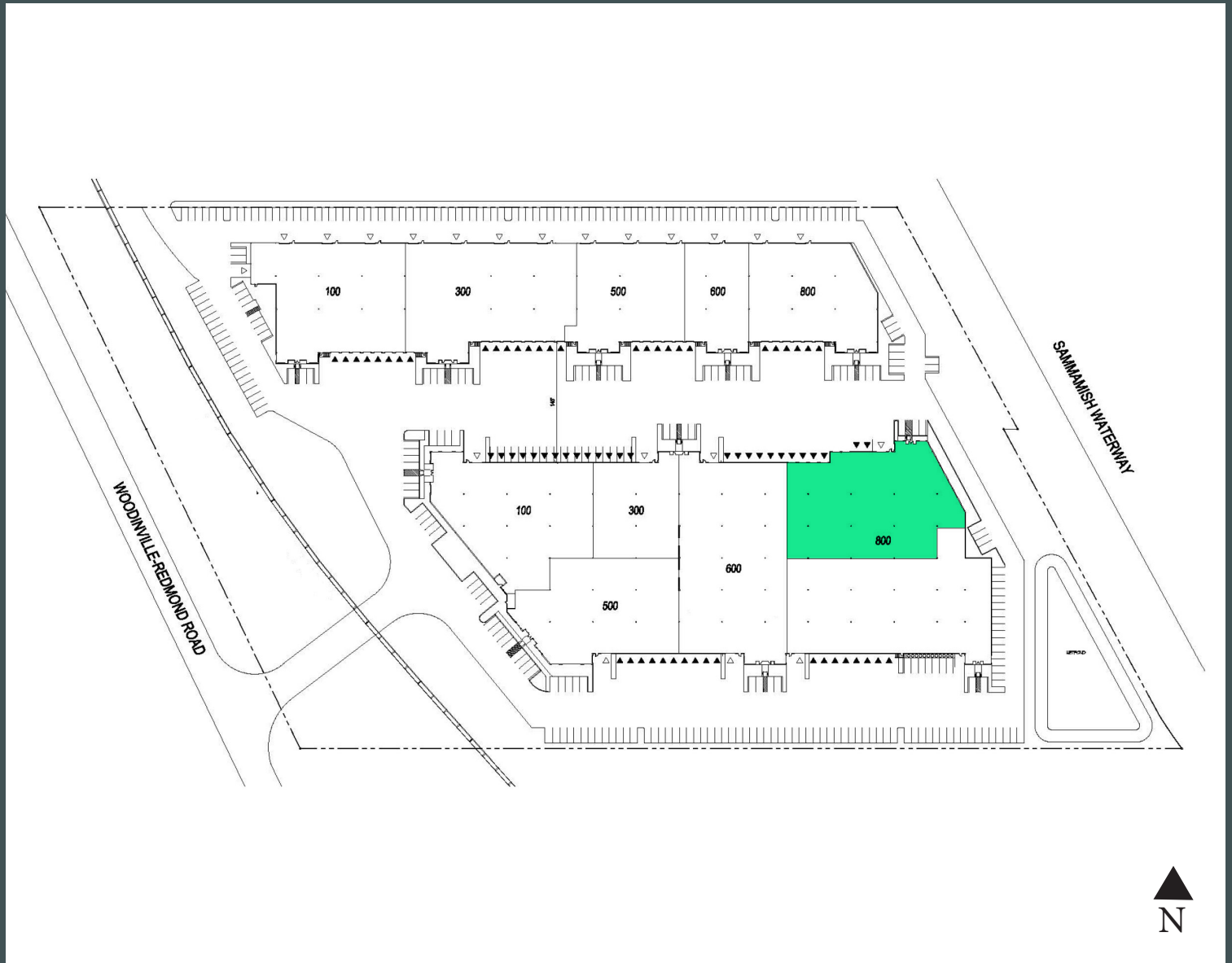
15000 Woodinville-Redmond Road
Suite B900
Woodinville, WA 98072

±25,210 Total SF including ±4,624 SF Office
Shorter Term Opportunity at Below Market Rates



Woodinville Corporate Center III

15000 Woodinville-Redmond Road Suite B900 | Woodinville, WA 98072



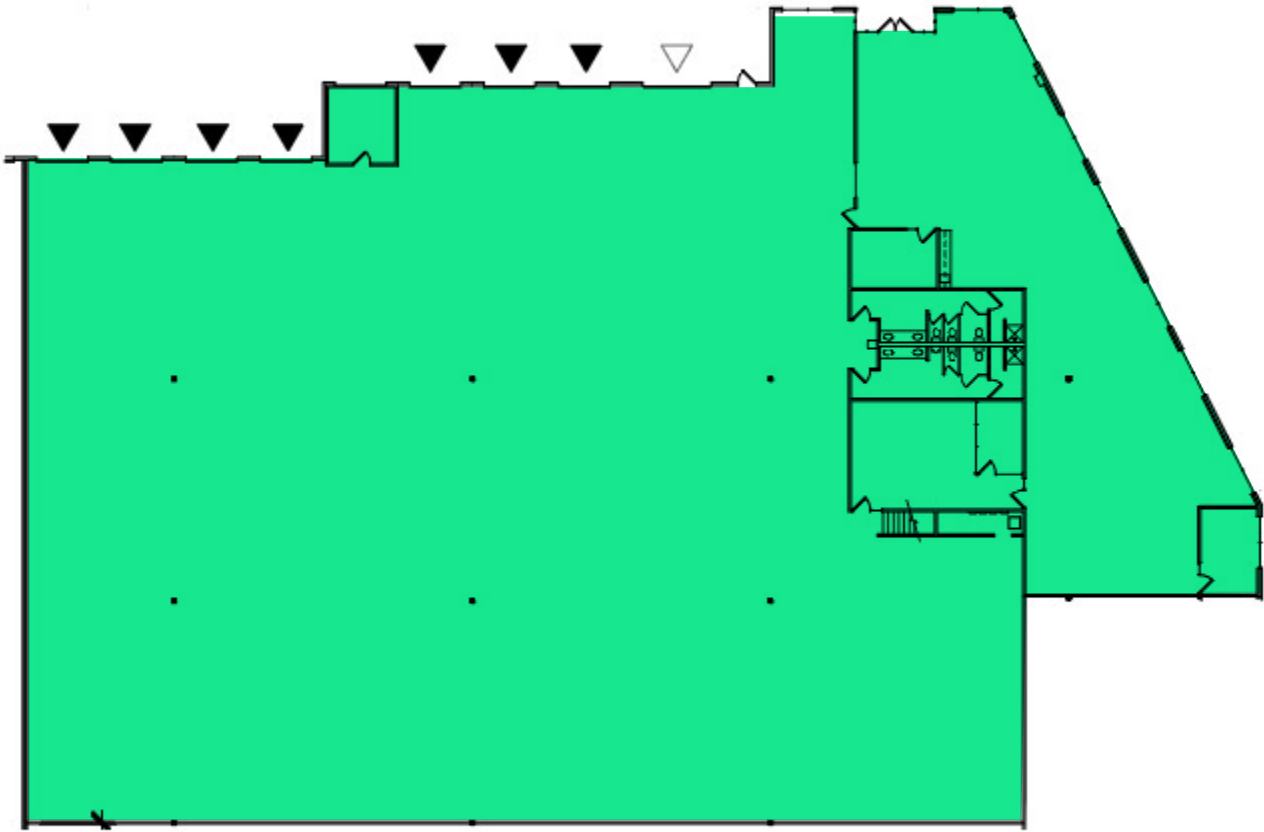
Property Details

- + High image concrete tilt-up construction
- + Located in Woodinville's premier industrial park
- + Convenient access to I-5 and SR-522
- + 24' clear height in warehouse
- + End cap space
- + Loading:
 - 7 Dock High
 - 1 Drive In
- + Excellent short term opportunity below market
- + Sublease Term: 6/30/2026
 - Available with 30 days' notice

Call Brokers for Rates

Floorplan

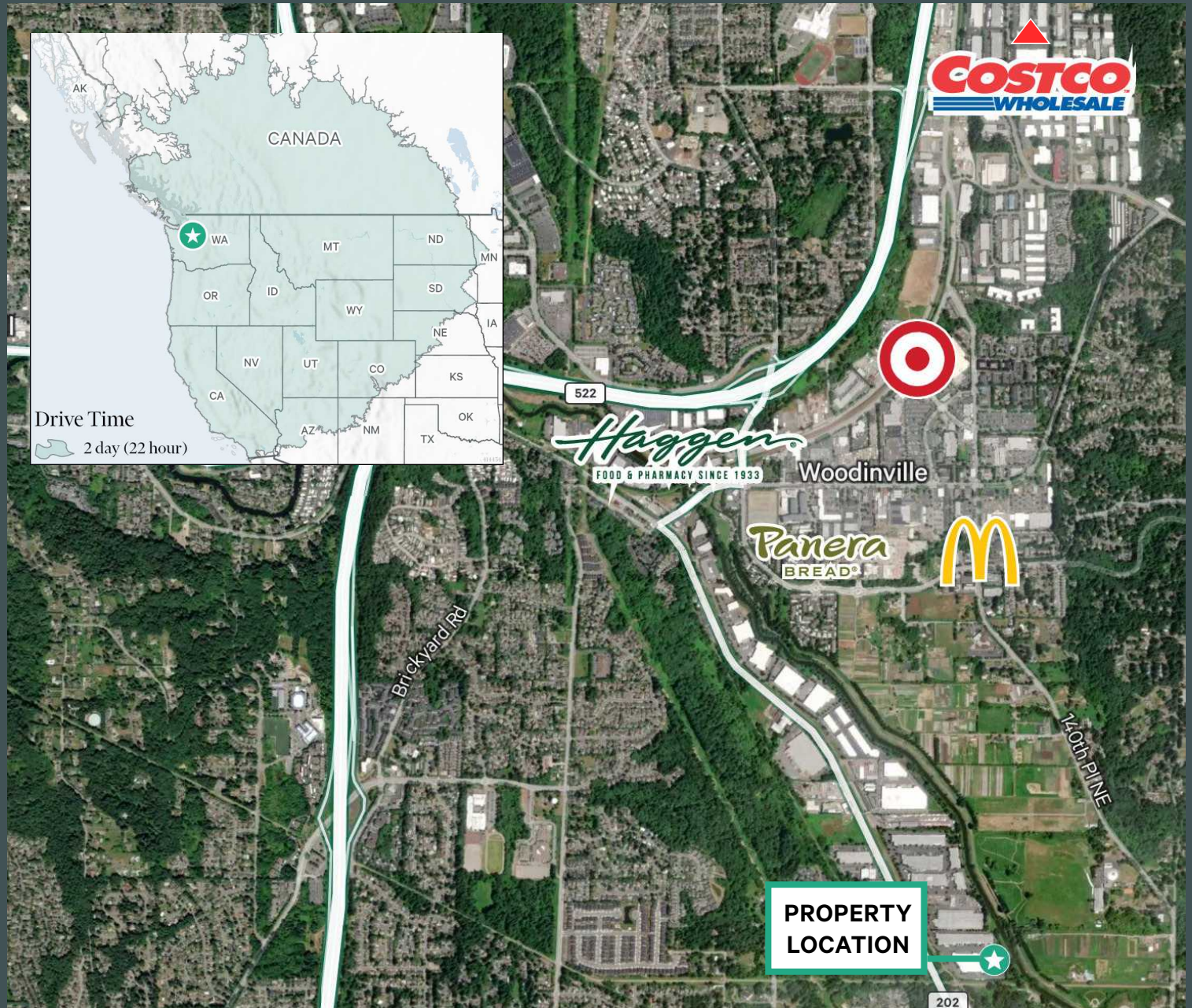
Suite B900: ±25,210 Total SF including ±4,624 SF Office



Woodinville Corporate Center III

15000 Woodinville-Redmond Road Suite B900 | Woodinville, WA 98072

For Lease



Contact Us

John Bauer

Senior Vice President
+1 425 462 6906
john.bauer@cbre.com

Erik Larson

First Vice President
+1 425 462 6954
erik.larson@cbre.com

CBRE, Inc.

929 108th Avenue NE
Suite 700
Bellevue, WA 98004

© 2023 CBRE, Inc. All rights reserved. This information has been obtained from sources believed reliable, but has not been verified for accuracy or completeness. You should conduct a careful, independent investigation of the property and verify all information. Any reliance on this information is solely at your own risk. CBRE and the CBRE logo are service marks of CBRE, Inc. All other marks displayed on this document are the property of their respective owners, and the use of such logos does not imply any affiliation with or endorsement of CBRE. Photos herein are the property of their respective owners. Use of these images without the express written consent of the owner is prohibited. 8-11-23 RP