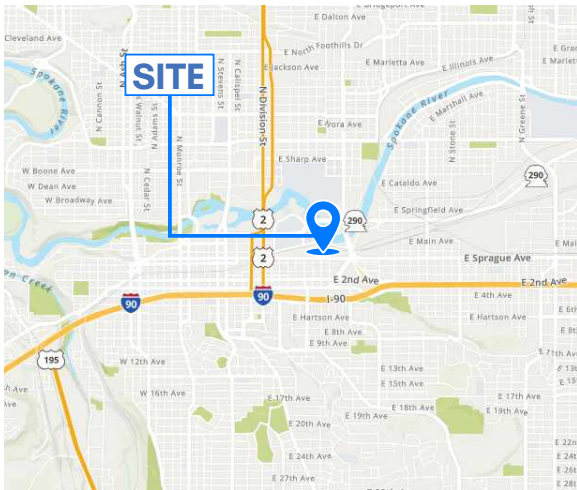


# For Lease

Scott Morris Center for Energy Innovation  
12 N Sheridan Street | Spokane, WA



## Property highlights

- Central energy plant onsite to power Morris Center and neighboring Catalyst buildings
- Low waterflow plumbing fixtures
- Smart building management system to maximize building operations efficiency

## Available space

- ±3,353 SF first floor retail space
- Parking lot adjacent to space

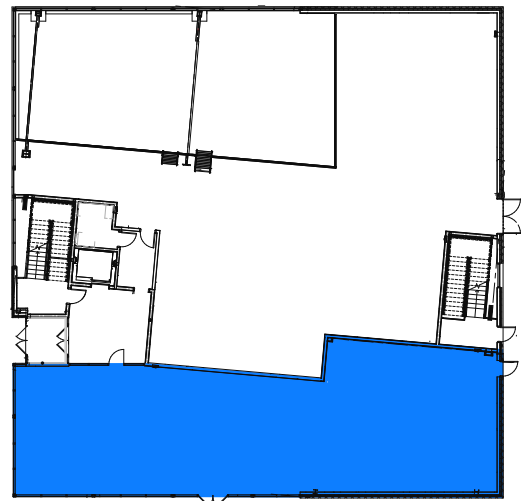
# For Lease

Scott Morris Center for Energy Innovation  
12 N Sheridan Street | Spokane, WA



## First Floor Retail | 3,353 SF

First floor retail with adjacent parking lot



■ Available space

### FOR LEASING INFORMATION:

**MICHAEL SHARAPATA**

+1 509 822 0088

michael.sharapata@jll.com

RE License #26565

**CHRIS BELL**

+1 509 622 3538

cbell@naiblack.com

RE License #17737