

*For Lease*

# COURT HOUSE SQUARE

1102 A STREET  
TACOMA, WA



**km** Kidder  
Mathews



# Court House Square

*Located on bustling A Street, Court House Square provides premier walkability to the most sought after retail, restaurants, and bars in Downtown Tacoma.*

Much more than a post office, Court House Square holds two restaurants, a coffee shop, two 2,000 sq. ft. event venues, a historic courtroom, and dozens of local businesses. We are proud to be a part of Downtown Tacoma's budding retail scene and boast some of the most unique and affordable office spaces.

COURT HOUSE SQUARE

E 12TH ST

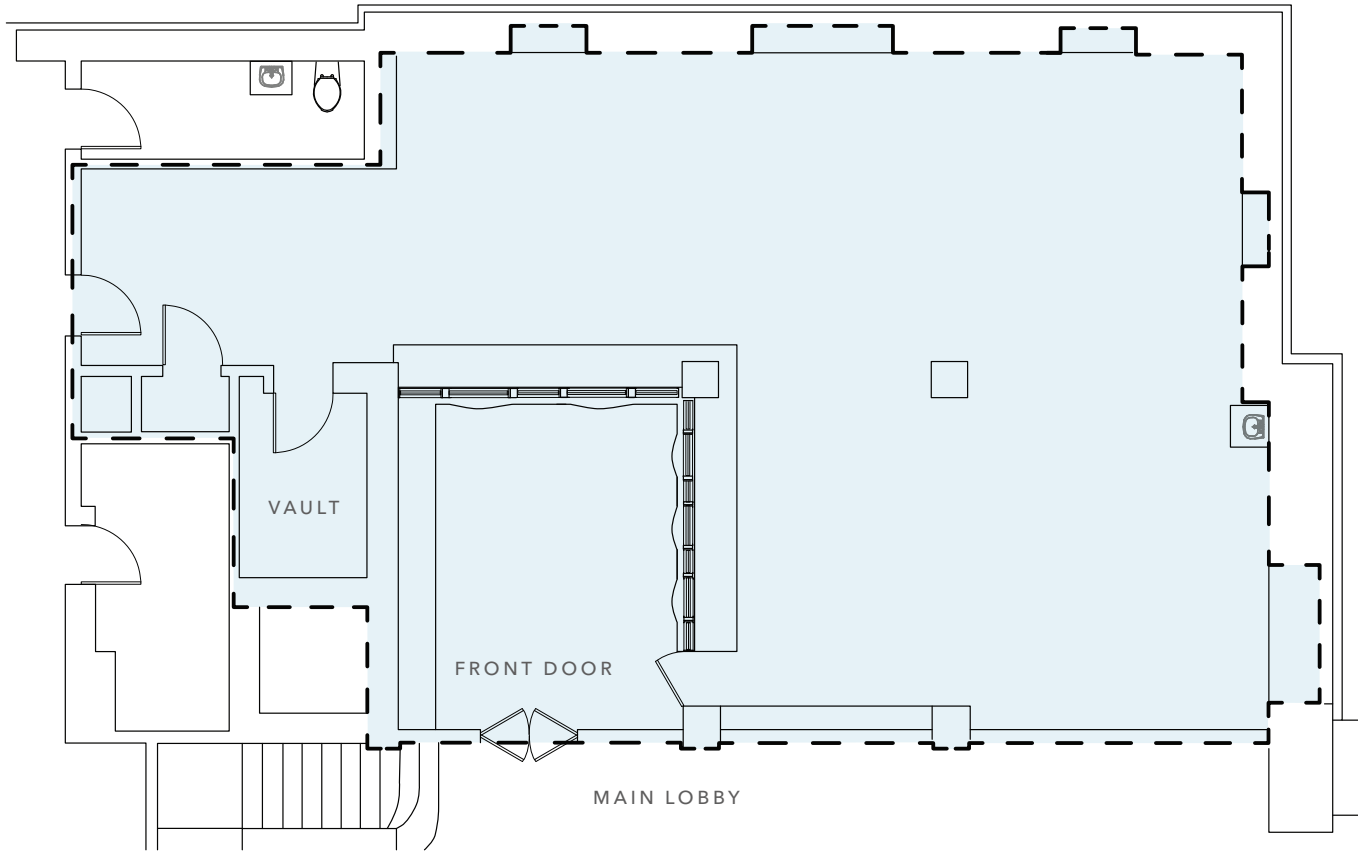


AVAILABLE FOR LEASE

KIDDER MATHEWS



# SUITE 210



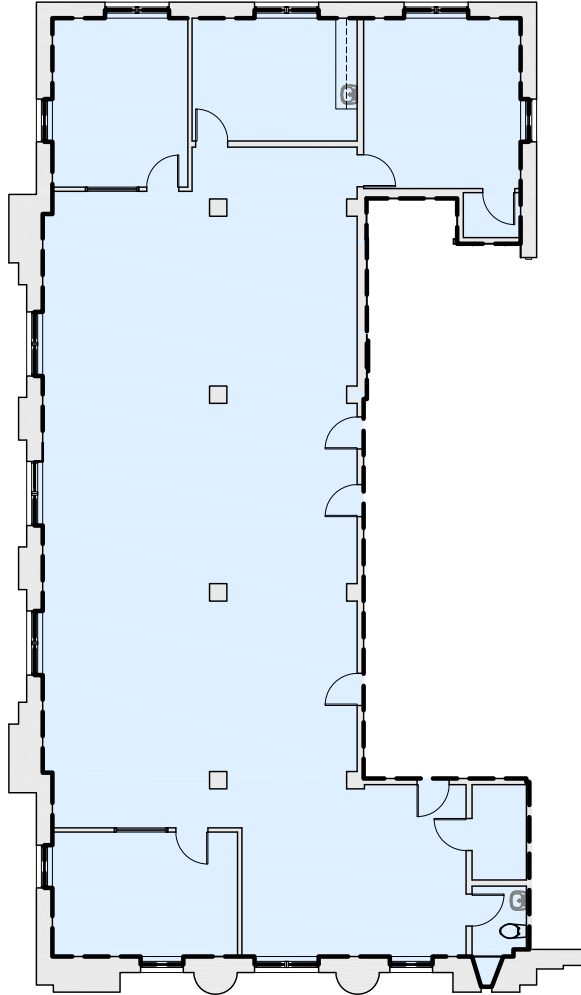
2,463SF

AVAILABLE

\$26.00

PSF, FULL SERVICE

# SUITE 300



---

*4,153 SF*

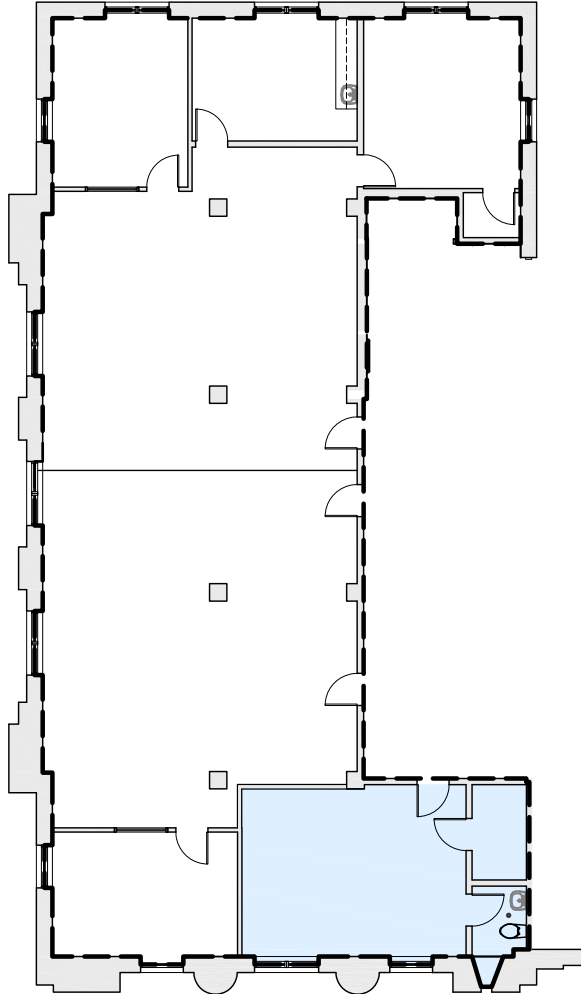
AVAILABLE

---

*\$26.00*

PSF, FULL SERVICE

# SUITE 325



---

*280 SF*

AVAILABLE

---

*\$850*

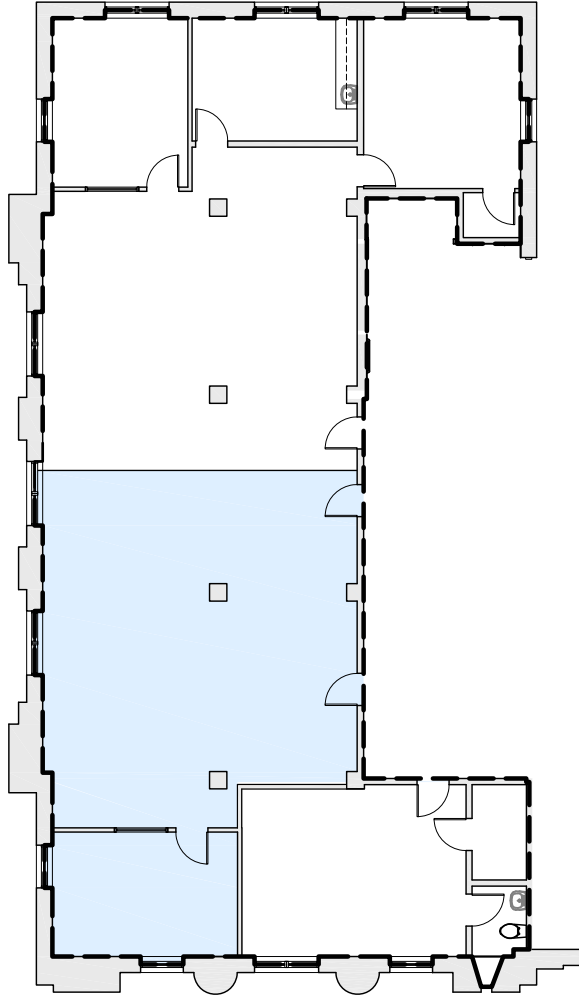
PER MONTH, FULL SERVICE

---

*\$36.43*

PSF, FULL SERVICE

# SUITE 326



---

*2,475 SF*

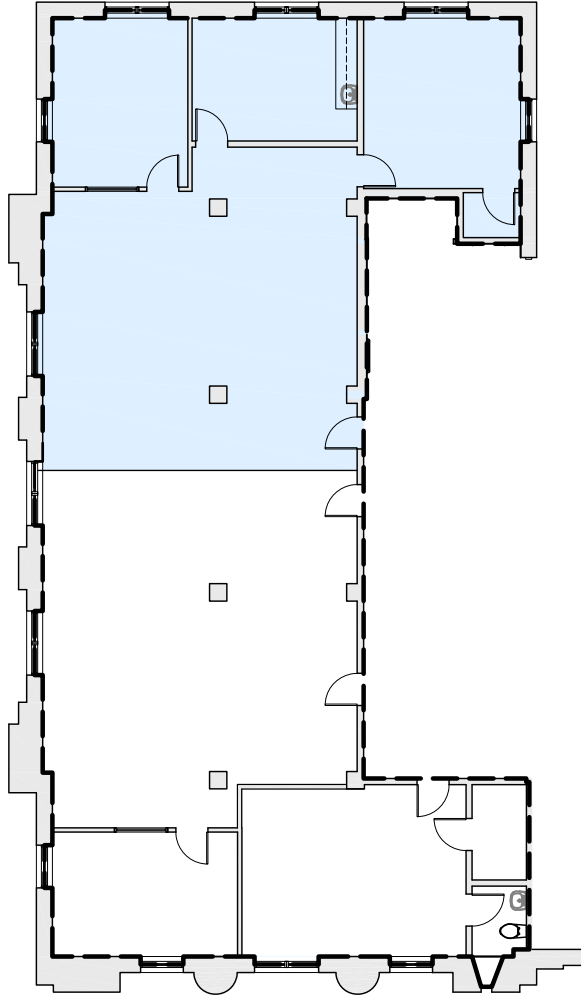
AVAILABLE

---

*\$26.00*

PSF, FULL SERVICE

# SUITE 328



---

*2,650 SF*

AVAILABLE

---

*\$26.00*

PSF, FULL SERVICE

# HIGHLY- ACCESSIBLE LOCATION IN DOWNTOWN TACOMA

Close proximity to popular suburbs

Immediate access to I-705 & I-5

The location your employees would covet  
and clients would appreciate

From coffee to cocktails & dinner,  
Court House Square has it all

**40 MIN**  
SEATTLE & BELLEVUE CBD

**15 MIN**  
GIG HARBOR







## NEARBY AMENITIES

### RESTAURANTS & BARS

- 01 Steel Creek Tacoma
- 02 Mexico Magico
- 03 Fujiya Japanese Restaurant
- 04 Happy Belly
- 05 Galanga Thai Cuisine
- 06 The Old Spaghetti Factory
- 07 Infinite Soups
- 08 Unique Baker
- 09 The Firwood Rock Lounge
- 10 The Deltan Club
- 11 Cans
- 12 Odd Otter Brewing Company
- 13 Encore

### GROCERIES & SHOPS

- 01 The Broadway Farmers Market
- 02 Terra Organics LLC
- 03 Safeway
- 04 M&H Market
- 05 Stadium Thriftway
- 06 Abby's On Broadway
- 07 Absolutely Flowers
- 08 Next To Nature
- 09 Art Shop
- 10 Tollefson Plaza
- 11 Johnson Candy Company
- 12 Black Door Wine Company
- 13 Handy Mart

### SCHOOLS

- 01 Tacoma School of the Arts
- 02 Bates Technical College
- 03 Community Montessori
- 04 McCarver
- 05 NW School of Innovative
- 06 Stanley

### RECREATION & PARKS

- 01 Fireman's Park
- 02 Neighbors Park
- 03 Peoples Park
- 04 Wright Park
- 05 McCarver Park
- 06 Stanley Part

# COURT HOUSE SQUARE

EXCLUSIVELY LEASED BY

**WILL FRAME**

Kidder Mathews

253.722.1412

[will.frame@kidder.com](mailto:will.frame@kidder.com)

**DREW FRAME**

Kidder Mathews

253.722.1433

[drew.frame@kidder.com](mailto:drew.frame@kidder.com)

This information supplied herein is from sources we deem reliable. It is provided without any representation, warranty, or guarantee, expressed or implied as to its accuracy. Prospective Buyer or Tenant should conduct an independent investigation and verification of all matters deemed to be material, including, but not limited to, statements of income and expenses. Consult your attorney, accountant, or other professional advisor.

**km** Kidder  
Mathews