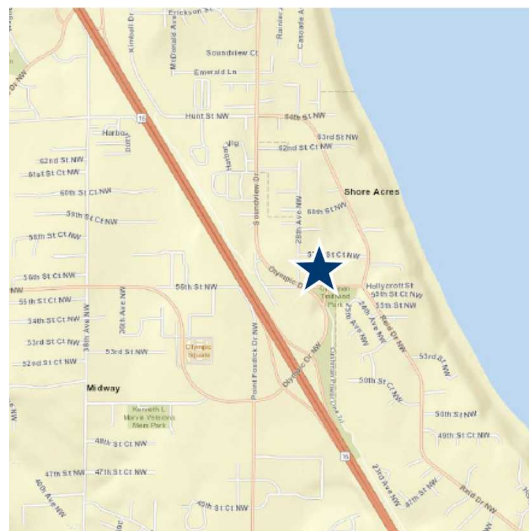
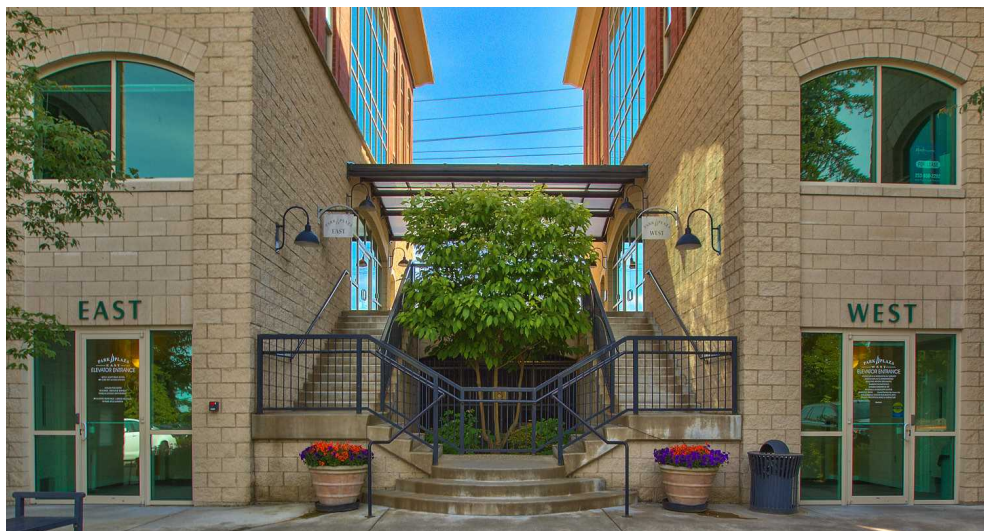




BUILDING AN  
EXCEPTIONAL  
FUTURE,  
TOGETHER.

# FOR LEASE

**PARK PLAZA**  
2727 HOLLYCROFT STREET, GIG HARBOR



## FEATURES

- Class A Office Building
- Mountain and Water Views Available
- Close to Olympic Village Retail
- Conveniently located off HWY 16
- Ample Parking Available
- Park Like Setting with Trail
- Professionally Managed by Rush Properties

## CURRENT AVAILABILITY

SUITE	SIZE	AVAILABLE
390	893	Now
460	2,228	July 2024
470	1,933	Q4 2024

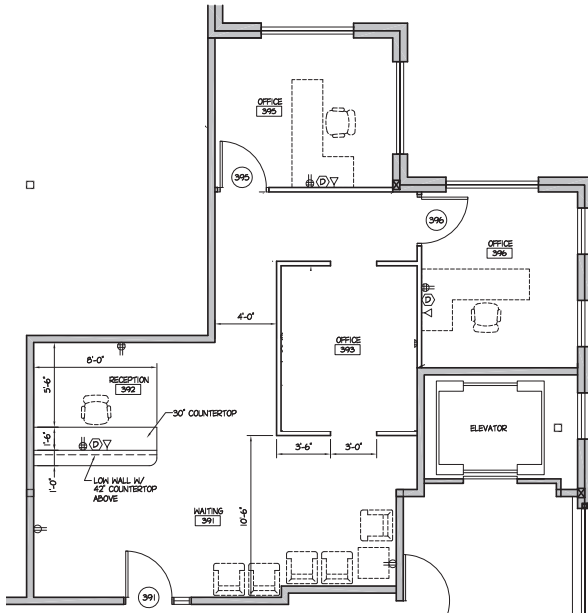
## CONTACT

**Karen Fairall, CCIM**

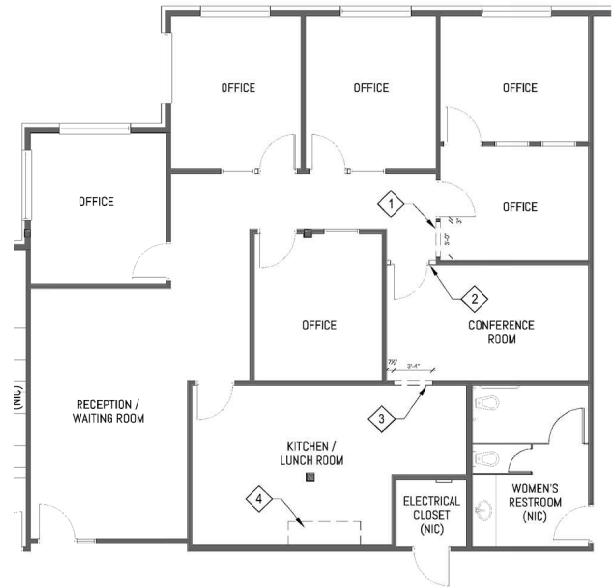
Director of Brokerage Services  
t 253.858.3636 / f 253.858.3188  
kfairall@therushcompanies.com

**Kayla Dyer**

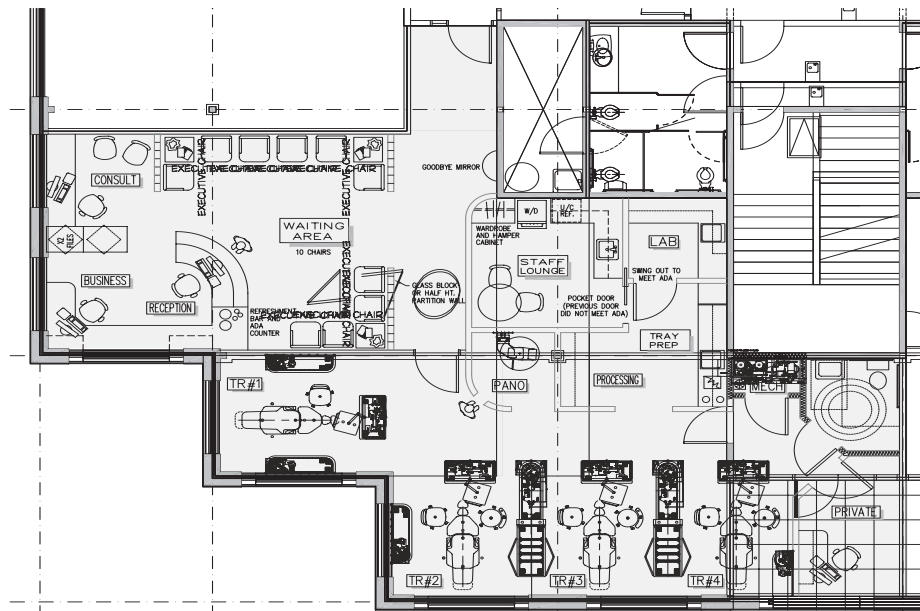
Associate Broker  
t 253.858.3636 / f 253.858.3188  
kdyer@therushcompanies.com



Suite 390 - 893 Rentable Square Feet



Suite 460 - 2,228 Rentable Square Feet



Suite 470 - 1,933 Rentable Square Feet