



FOR LEASE

# Gateway Corporate Center

12832 INTERURBAN AVENUE S, BUILDING 1, TUKWILA, WA



**Kidder  
Mathews**

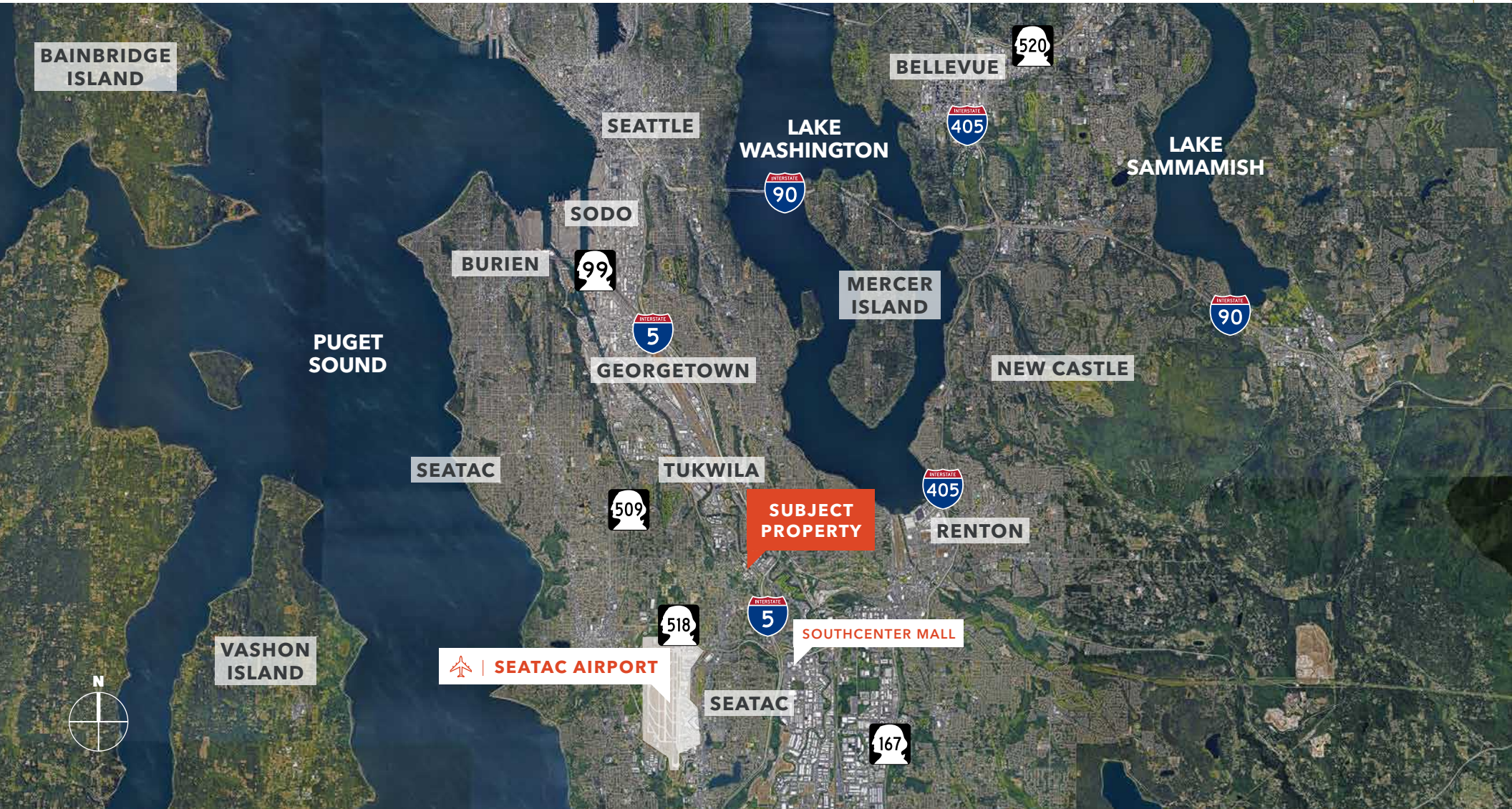
This information supplied herein is from sources we deem reliable. It is provided without any representation, warranty, or guarantee, expressed or implied as to its accuracy. Prospective Buyer or Tenant should conduct an independent investigation and verification of all matters deemed to be material, including, but not limited to, statements of income and expenses. Consult your attorney, accountant, or other professional advisor.

[KIDDER.COM](http://KIDDER.COM)

FOR LEASE

# Gateway Corporate Center

12832 INTERURBAN AVENUE S, BUILDING 1, TUKWILA, WA



KIDDER.COM

This information supplied herein is from sources we deem reliable. It is provided without any representation, warranty, or guarantee, expressed or implied as to its accuracy. Prospective Buyer or Tenant should conduct an independent investigation and verification of all matters deemed to be material, including, but not limited to, statements of income and expenses. Consult your attorney, accountant, or other professional advisor.

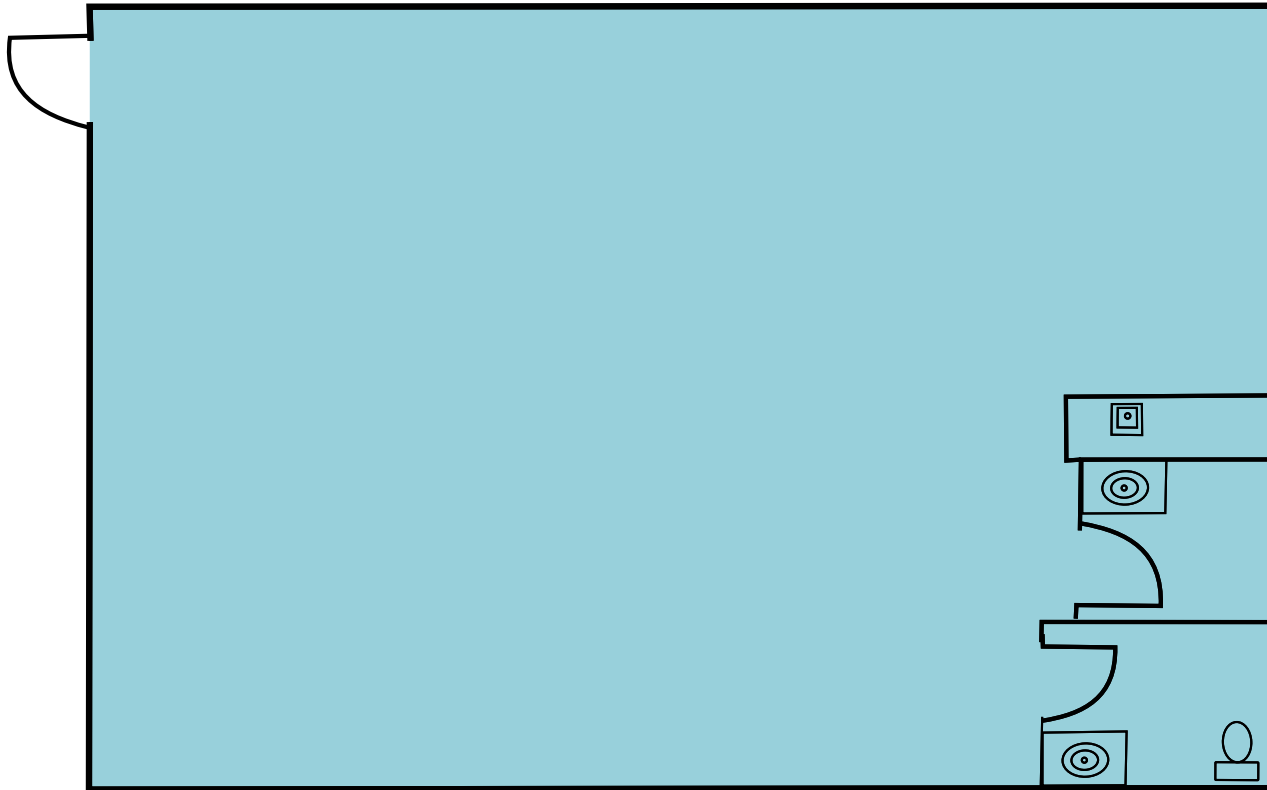


FOR LEASE

# Gateway Corporate Center

12832 INTERURBAN AVENUE S, BUILDING 1, TUKWILA, WA

## Building 1



1,481 RSF office

2024 estimated NNN \$0.52 PSF (excludes: separately metered utilities, janitorial and quarterly HVAC maintenance)

Outstanding freeway access to I-5 & I-405

Available immediately

Asking rate \$24 PSF per year, NNN

**BRIAN CLAPP**

206.248.7316

[brian.clapp@kidder.com](mailto:brian.clapp@kidder.com)

**SPENCER CLAPP**

206.248.7427

[spencer.clapp@kidder.com](mailto:spencer.clapp@kidder.com)

**RICHARD DAVIDSON**

206.248.7314

[richard.davidson@kidder.com](mailto:richard.davidson@kidder.com)

KIDDER.COM

This information supplied herein is from sources we deem reliable. It is provided without any representation, warranty, or guarantee, expressed or implied as to its accuracy. Prospective Buyer or Tenant should conduct an independent investigation and verification of all matters deemed to be material, including, but not limited to, statements of income and expenses. Consult your attorney, accountant, or other professional advisor.

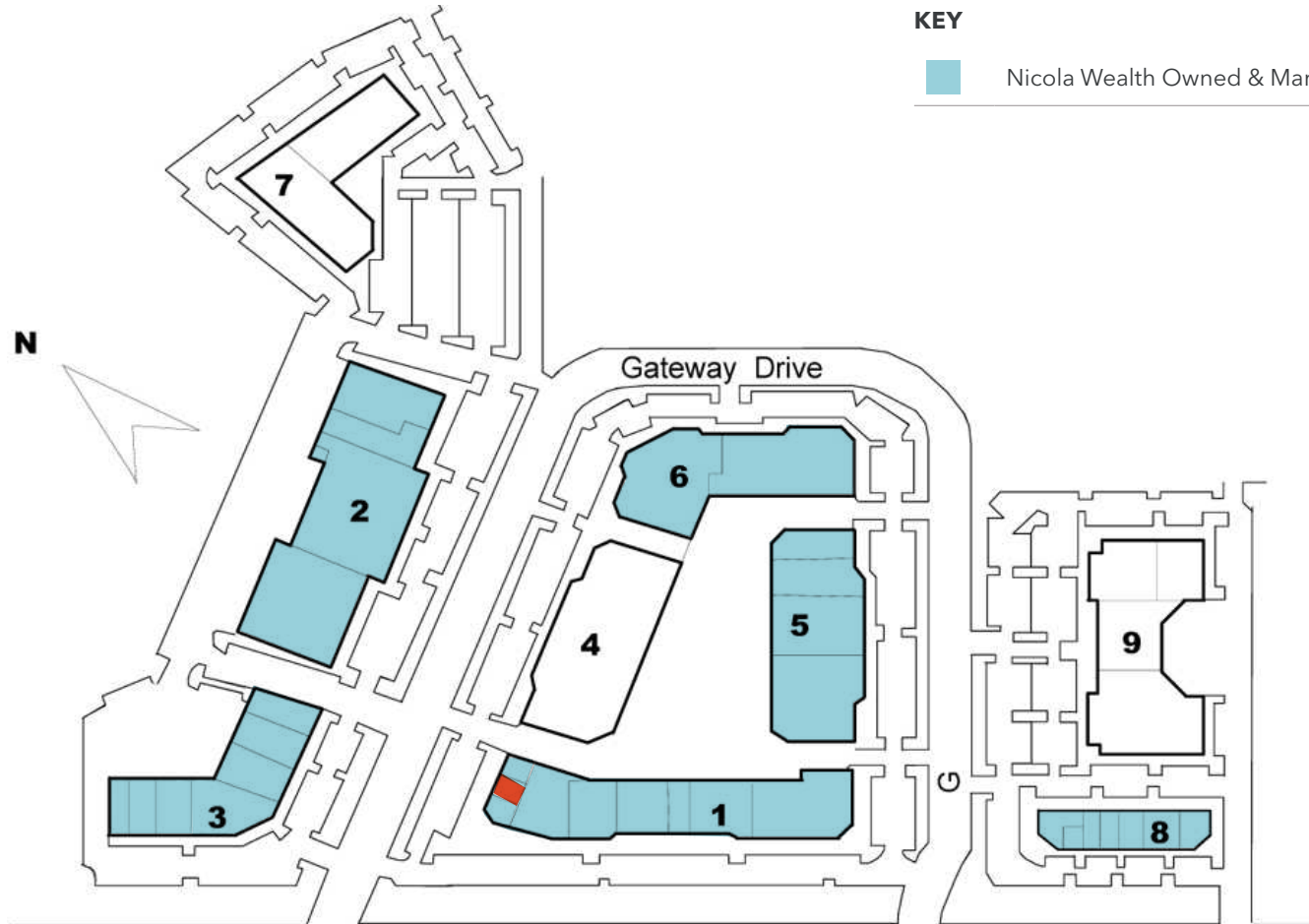


**FOR LEASE**


# Gateway Corporate Center

12832 INTERURBAN AVENUE S, BUILDING 1, TUKWILA, WA

## Site Plan



**KEY**

 Nicola Wealth Owned & Managed

**1,481**

TOTAL SF

**NOW**

AVAILABLE

**BRIAN CLAPP**  
206.248.7316  
[brian.clapp@kidder.com](mailto:brian.clapp@kidder.com)

**SPENCER CLAPP**  
206.248.7427  
[spencer.clapp@kidder.com](mailto:spencer.clapp@kidder.com)

**RICHARD DAVIDSON**  
206.248.7314  
[richard.davidson@kidder.com](mailto:richard.davidson@kidder.com)

**KIDDER.COM**

This information supplied herein is from sources we deem reliable. It is provided without any representation, warranty, or guarantee, expressed or implied as to its accuracy. Prospective Buyer or Tenant should conduct an independent investigation and verification of all matters deemed to be material, including, but not limited to, statements of income and expenses. Consult your attorney, accountant, or other professional advisor.

