



KENDALL LAKE BUILDING



**Kidder
Mathews**

Multiple Office Spaces For Lease 2,448-21,430 SF.

35030 SE DOUGLAS ST | SNOQUALMIE, WA

FOR LEASE

Kendall Lake Building

35030 SE DOUGLAS ST, SNOQUALMIE, WA



Property Features

56,000 SF total building size

CLASS-A two-story, suburban office building

CONTIGUOUS SPACE AVAILABLE 2,448 SF - 21,430 SF

CEILING HEIGHT 9'

RESERVED PARKING RATIO 4.0/1,000 SF

EXCELLENT floor plan with perimeter offices and open cube area

LOCATED within the heart of Snoqualmie Ridge Business Park, adjacent to Retail Center

AVAILABLE now

CALL BROKERS FOR RATES

KIDDER.COM

This information supplied herein is from sources we deem reliable. It is provided without any representation, warranty, or guarantee, expressed or implied as to its accuracy. Prospective Buyer or Tenant should conduct an independent investigation and verification of all matters deemed to be material, including, but not limited to, statements of income and expenses. Consult your attorney, accountant, or other professional advisor.

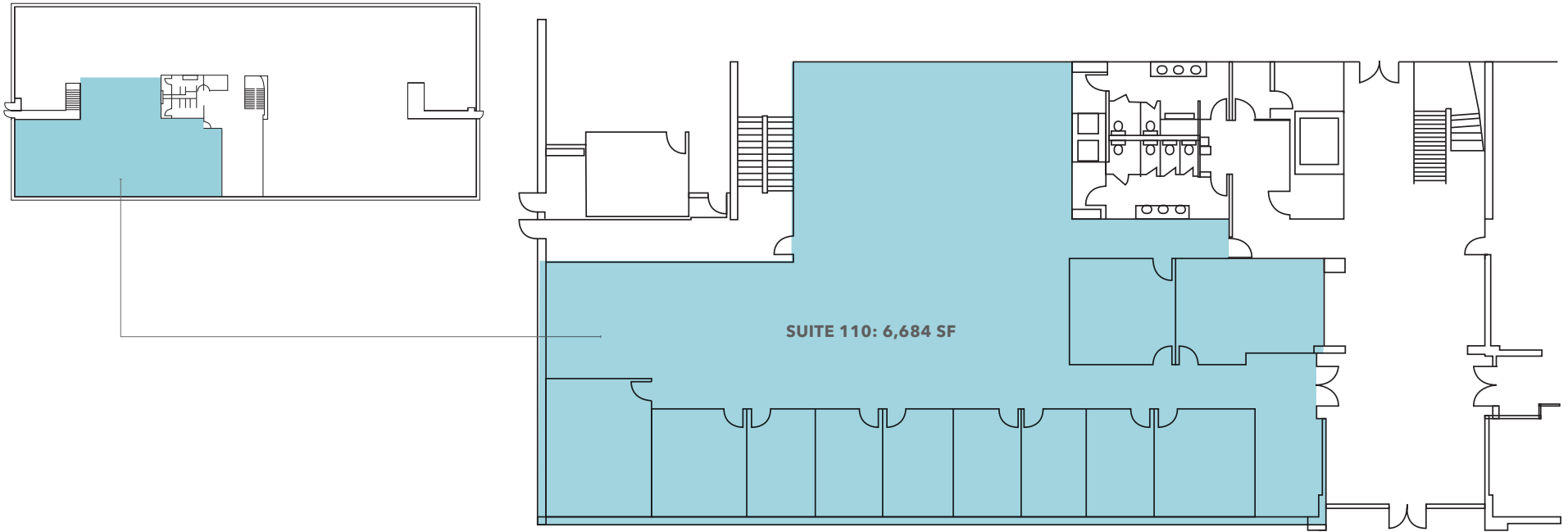
km Kidder Mathews

FOR LEASE

Kendall Lake Building

35030 SE DOUGLAS ST, SNOQUALMIE, WA

Suite 110



6,684 SF

AVAILABLE

ZACH VALL-SPINOSA

425.450.1115

zach.vallspinosa@kidder.com

RYAN FOSTER

425.450.1124

ryan.foster@kidder.com

KIDDER.COM

This information supplied herein is from sources we deem reliable. It is provided without any representation, warranty, or guarantee, expressed or implied as to its accuracy. Prospective Buyer or Tenant should conduct an independent investigation and verification of all matters deemed to be material, including, but not limited to, statements of income and expenses. Consult your attorney, accountant, or other professional advisor.

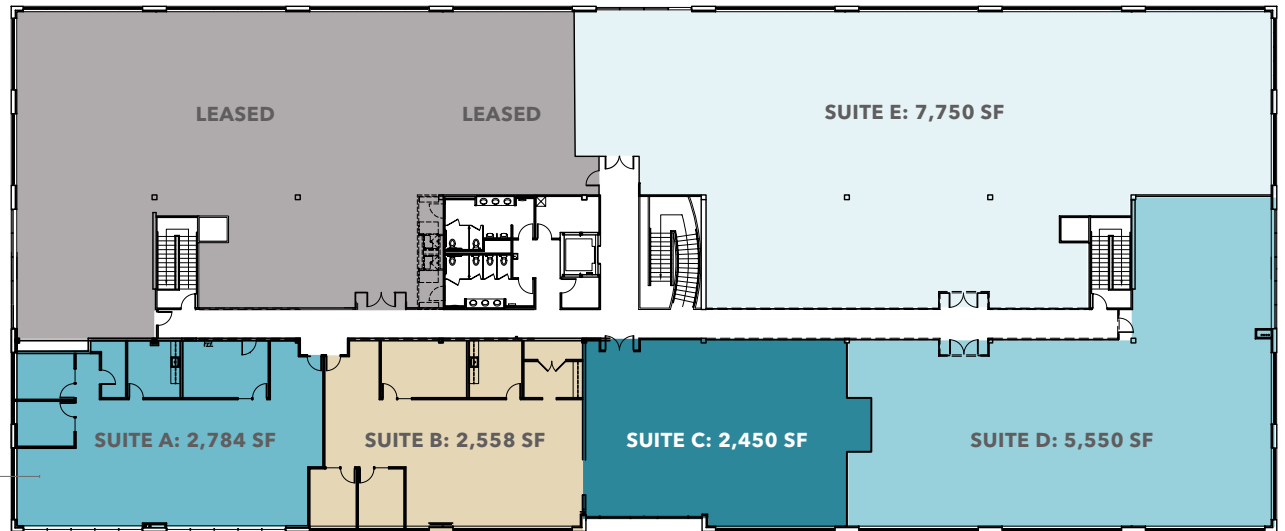
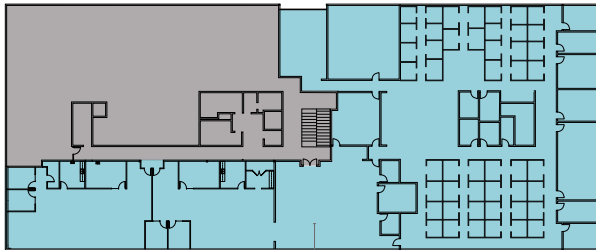
km Kidder Mathews

FOR LEASE

Kendall Lake Building

35030 SE DOUGLAS ST, SNOQUALMIE, WA

Second Floor - Suites A - F



2,450 – 21,430 SF

AVAILABLE

ZACH VALL-SPINOSA

425.450.1115

zach.vallspinosa@kidder.com

RYAN FOSTER

425.450.1124

ryan.foster@kidder.com

KIDDER.COM

This information supplied herein is from sources we deem reliable. It is provided without any representation, warranty, or guarantee, expressed or implied as to its accuracy. Prospective Buyer or Tenant should conduct an independent investigation and verification of all matters deemed to be material, including, but not limited to, statements of income and expenses. Consult your attorney, accountant, or other professional advisor.

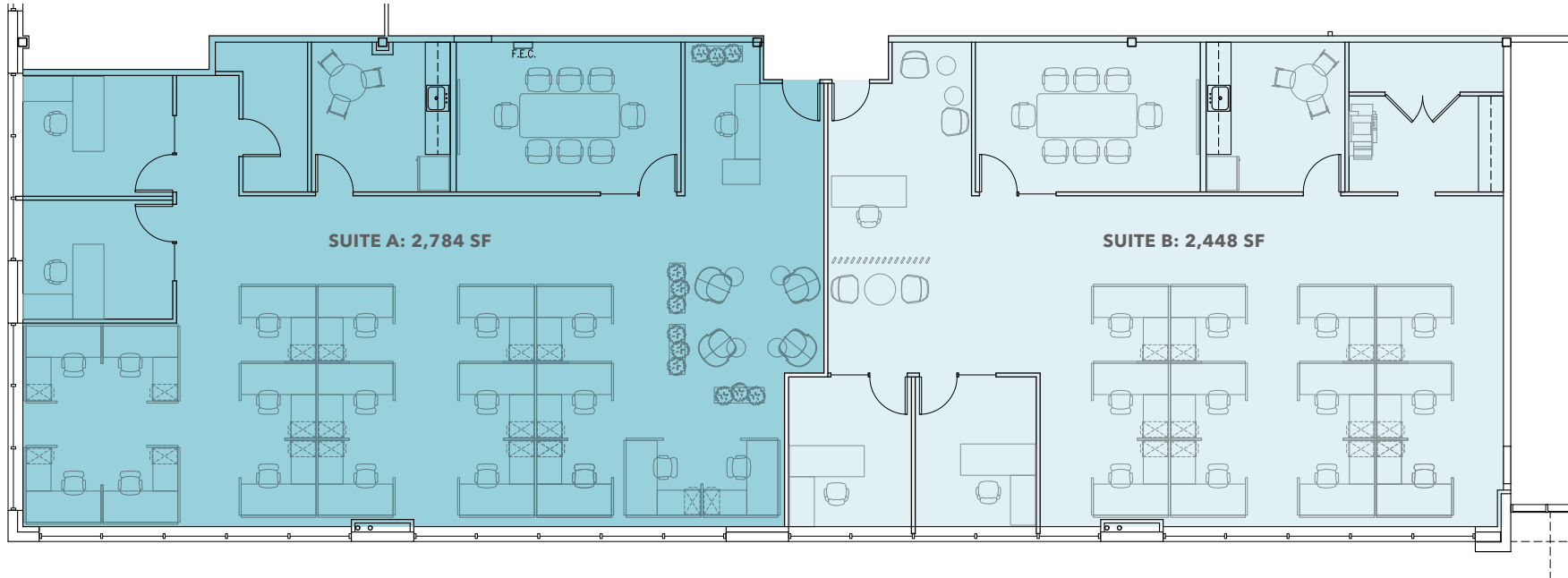


FOR LEASE

Kendall Lake Building

35030 SE DOUGLAS ST, SNOQUALMIE, WA

Suite A & B



SUITE A

2,784 SF

AVAILABLE

SUITE B

2,448 SF

AVAILABLE

KIDDER.COM

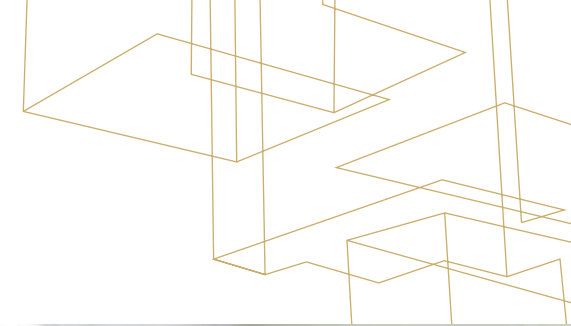
This information supplied herein is from sources we deem reliable. It is provided without any representation, warranty, or guarantee, expressed or implied as to its accuracy. Prospective Buyer or Tenant should conduct an independent investigation and verification of all matters deemed to be material, including, but not limited to, statements of income and expenses. Consult your attorney, accountant, or other professional advisor.



FOR LEASE

Kendall Lake Building

35030 SE DOUGLAS ST, SNOQUALMIE, WA



KIDDER.COM

This information supplied herein is from sources we deem reliable. It is provided without any representation, warranty, or guarantee, expressed or implied as to its accuracy. Prospective Buyer or Tenant should conduct an independent investigation and verification of all matters deemed to be material, including, but not limited to, statements of income and expenses. Consult your attorney, accountant, or other professional advisor.

