

THE WELLER BUILDING

1225 S WELLER ST, SEATTLE, WA 98144



OFFERING SUMMARY

Available SF:	1,039 - 10,430 SF
Lease Rate:	\$16.00 SF/yr (NNN)
Lot Size:	26,850 SF
Year Built:	2001
Building Size:	70,332 SF
Zoning:	DMC 85/75-170
Market:	Seattle
Submarket:	International District

PROPERTY OVERVIEW

Second generation office built out with multiple privates, conference rooms and open areas. Secure building with secured covered and uncovered parking.

PROPERTY HIGHLIGHTS

- Covered and secure uncovered parking
- Built out with multiple privates, conference rooms and open areas
- Keycode building access
- Class A International District Office
- Territorial Views
- Minutes to Downtown, Sports Stadiums, Capitol Hill and Pioneer Square
- Spaces on the third floor can be combined for up to 10,430 RSF
- Parking ratio is 1/1,000s/f, \$150mo.



DAVID HALL, CCIM, CPM CANDIDATE

206.381.3883 x107

david@corecommercialproperties.com

VINCE VONADA

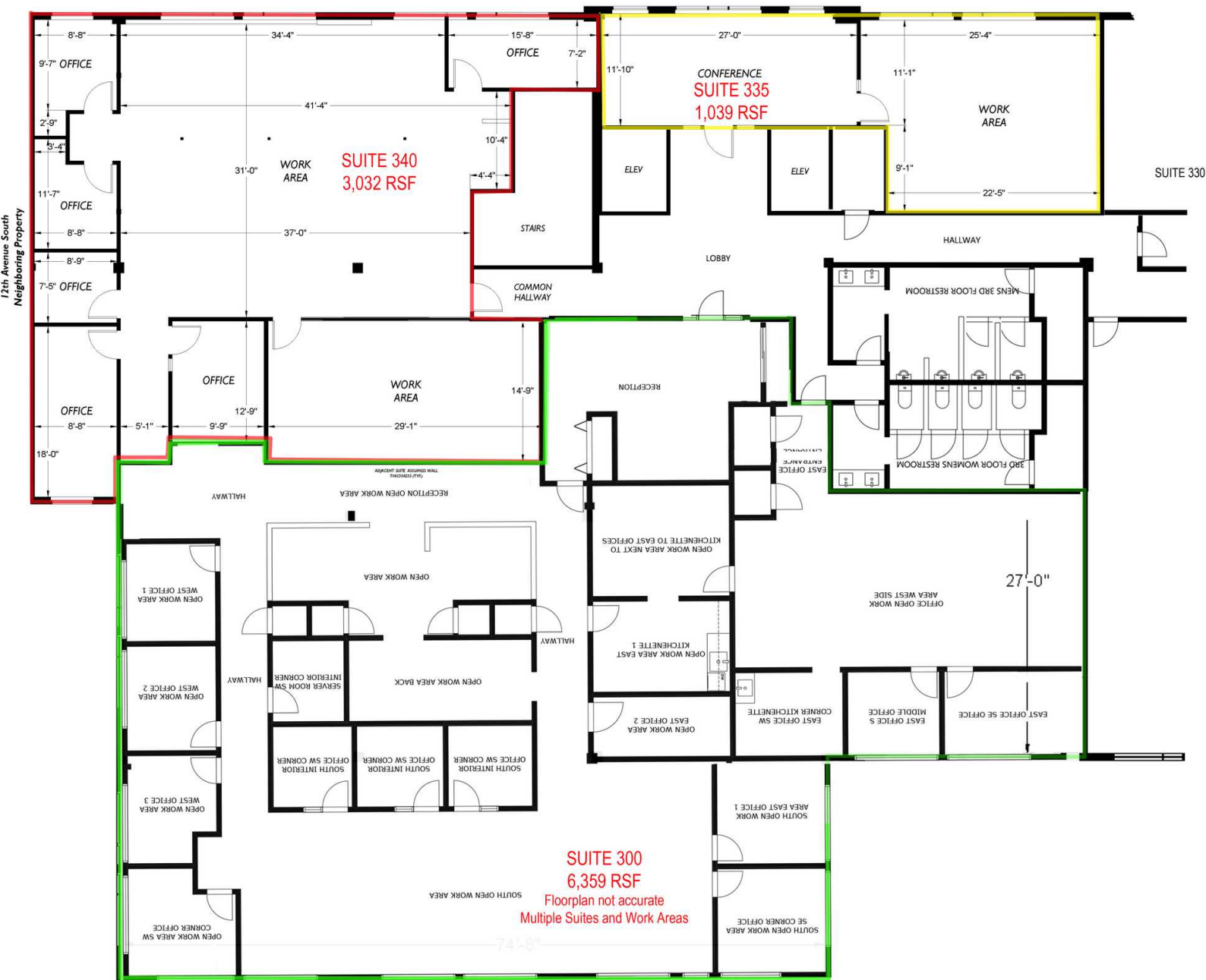
206.381.3810 x102

vince@corecommercialproperties.com

THE WELLER BUILDING

1225 S WELLER ST, SEATTLE, WA 98144

South Weller Street



Suite 335 + Suite 340 = 4,071 RSF | Suite 340 + Suite 300 = 9,391 RSF | Suite 335 + Suite 340 + Suite 300 = 10,430 RSF



DAVID HALL, CCIM, CPM CANDIDATE
206.381.3883 x107
david@corecommercialproperties.com

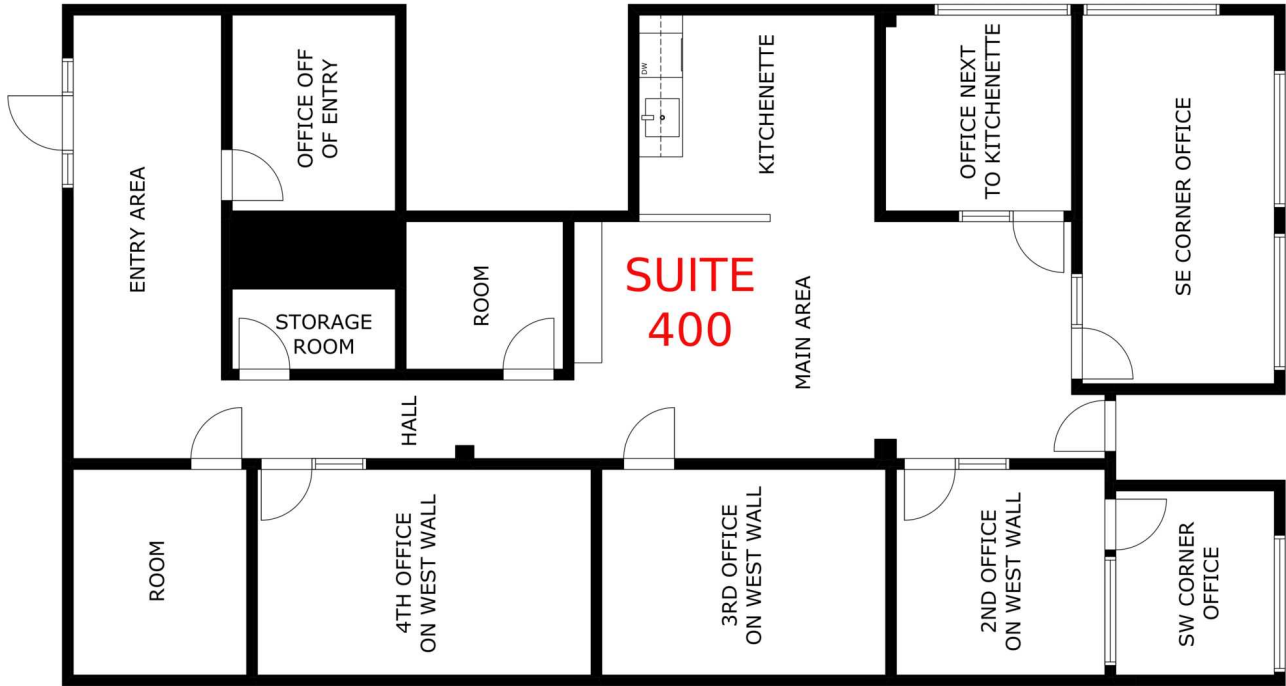
VINCE VONADA
206.381.3810 x102
vince@corecommercialproperties.com

CORE Commercial Properties, Inc. | 10 East Allison Street | Seattle, WA 98102 | 206.381.3800 | corecommercialproperties.com

The information herein comes from sources deemed reliable but has not been independently verified by CORE Commercial Properties, Inc. No warranty or representation, expressed or implied is made as to the accuracy of the information herein, and it is submitted subject to errors, omissions, change of price, rental, or other conditions, withdrawal without notice, and to any special listing conditions, imposed by our principals.

THE WELLER BUILDING

1225 S WELLER ST, SEATTLE, WA 98144



LEASE INFORMATION

Lease Type:	NNN	Lease Term:	Negotiable
Total Space:	1,039 - 10,430 SF	Lease Rate:	\$16.00 SF/yr

AVAILABLE SPACES

SUITE	TENANT	SIZE (SF)	LEASE TYPE	LEASE RATE	DESCRIPTION
Suite 340	Available	3,032 - 10,430 SF	NNN	\$16.00 SF/yr	6 Privates, Large Open Office. Can be combined with Suite 335 and/or Suite 300 for 4,071 RSF, 9,391 RSF and 10,430 RSF respectively. Available now.
Suite 335	Available	1,039 - 10,430 SF	NNN	\$16.00 SF/yr	Two open work areas/conference rooms/meeting rooms. Can be combined with Suite 340 and/or Suite 300 for 4,071 RSF, 9,391 RSF and 10,430 RSF respectively. Available now.
Suite 300	Available	6,359 - 10,430 SF	NNN	\$16.00 SF/yr	Multiple privates, conference rooms, kitchenette, open work areas. Territorial views. Can be combined with Suite 335 and/or Suite 340 for 9,391 RSF and 10,430 RSF respectively. Available August 1, 2023
Suite 400	Available	2,079 SF	NNN	\$16.00 SF/yr	Multiple privates, conference room, kitchenette, open work area. Territorial views. Available July 1, 2023.



DAVID HALL, CCIM, CPM CANDIDATE
206.381.3883 x107
david@corecommercialproperties.com

VINCE VONADA
206.381.3810 x102
vince@corecommercialproperties.com

THE WELLER BUILDING

1225 S WELLER ST, SEATTLE, WA 98144



DAVID HALL, CCIM, CPM CANDIDATE

206.381.3883 x107

david@corecommercialproperties.com

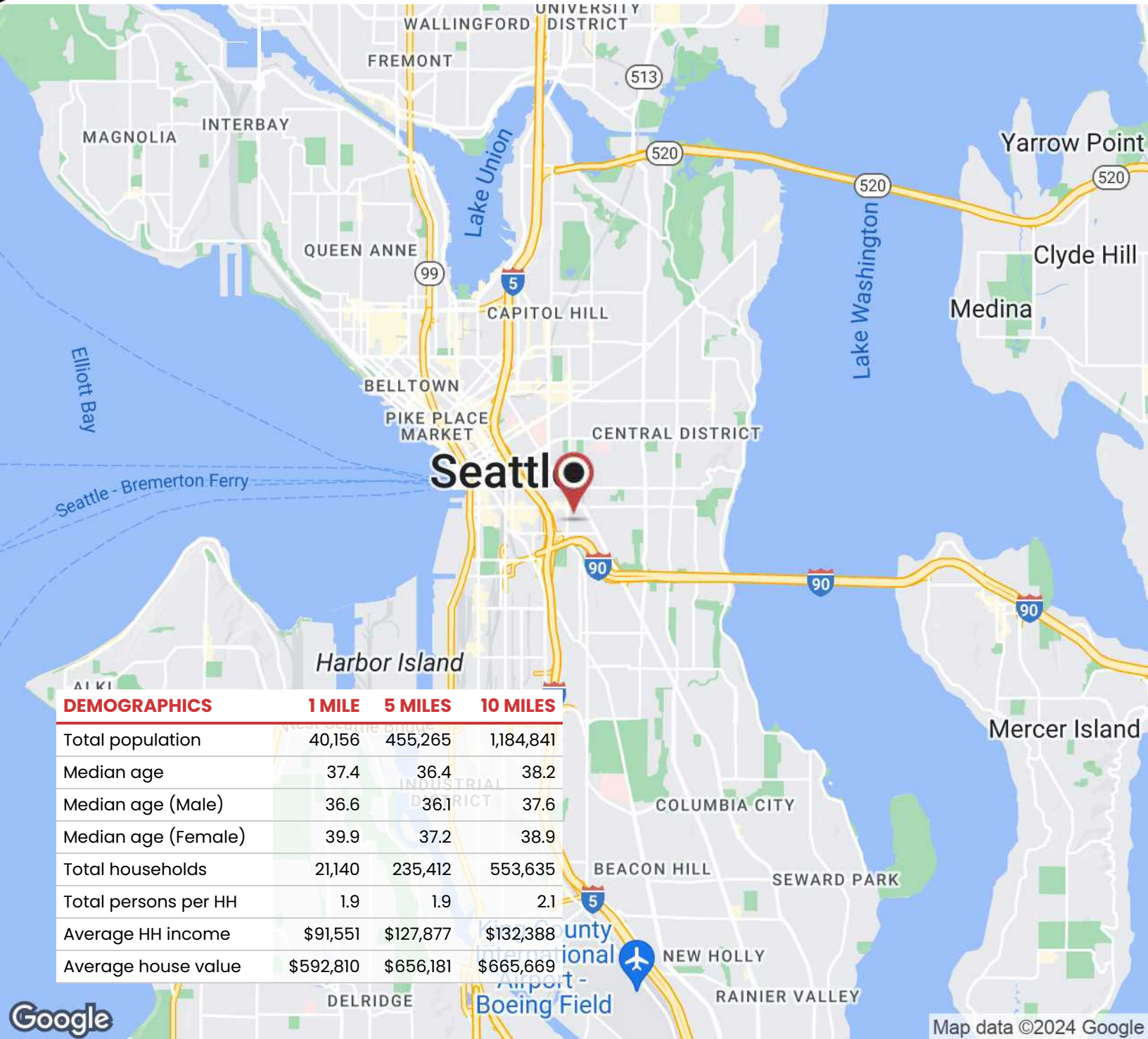
VINCE VONADA

206.381.3810 x102

vince@corecommercialproperties.com

THE WELLER BUILDING

1225 S WELLER ST, SEATTLE, WA 98144



DAVID HALL, CCIM, CPM CANDIDATE

206.381.3883 x107

david@corecommercialproperties.com

VINCE VONADA

206.381.3810 x102

vince@corecommercialproperties.com