

The Junction

19151 144TH AVE NE | WOODINVILLE, WA 98072

FOR LEASE



NEWMARK

Joe Lynch

Executive Managing Director

t 425-362-1399

joe.lynch@nrmk.com

Dan Harden

Senior Managing Director

t 425-362-1393

dan.harden@nrmk.com

Brendan Soelling

Associate Director

t 425-362-1389

brendan.soelling@nrmk.com

Property Highlights



Great Access to Hwy 522 and I-405 freeways



Neighbors include Locust Cider and Armstrong Family Winery



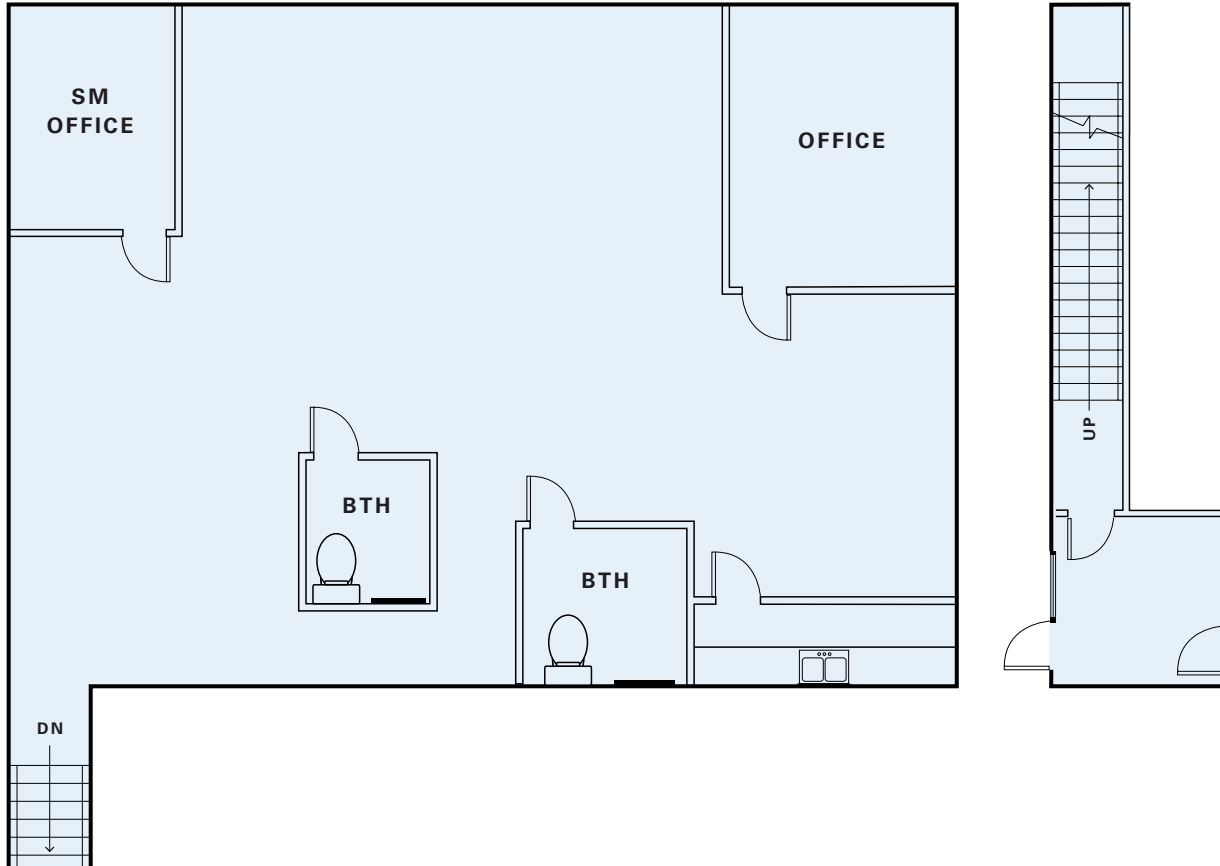
Office build-out with open workspace, private offices, 2 restrooms, shower, and kitchen



Abundant nearby amenities including restaurants, retail, wineries, grocery, and more

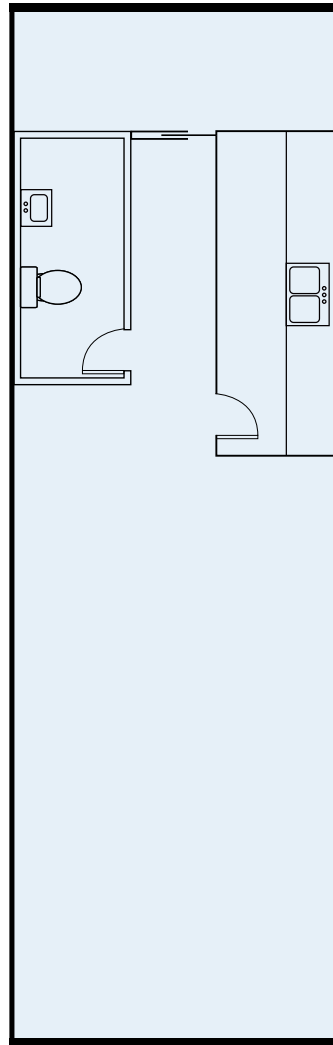


2,280 SF | Available Now

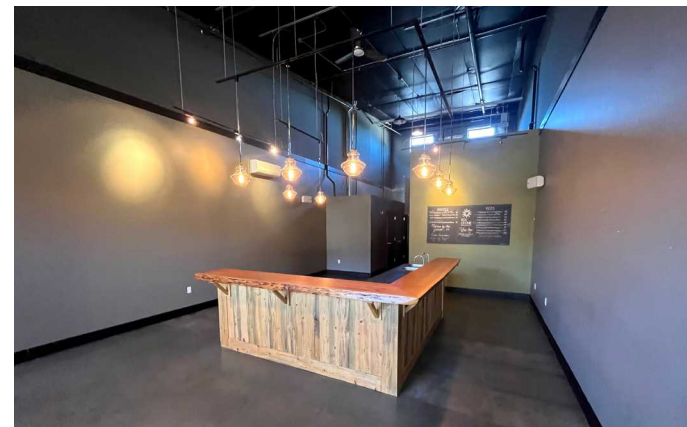


19151 144TH AVE NE | WOODINVILLE, WA 98072

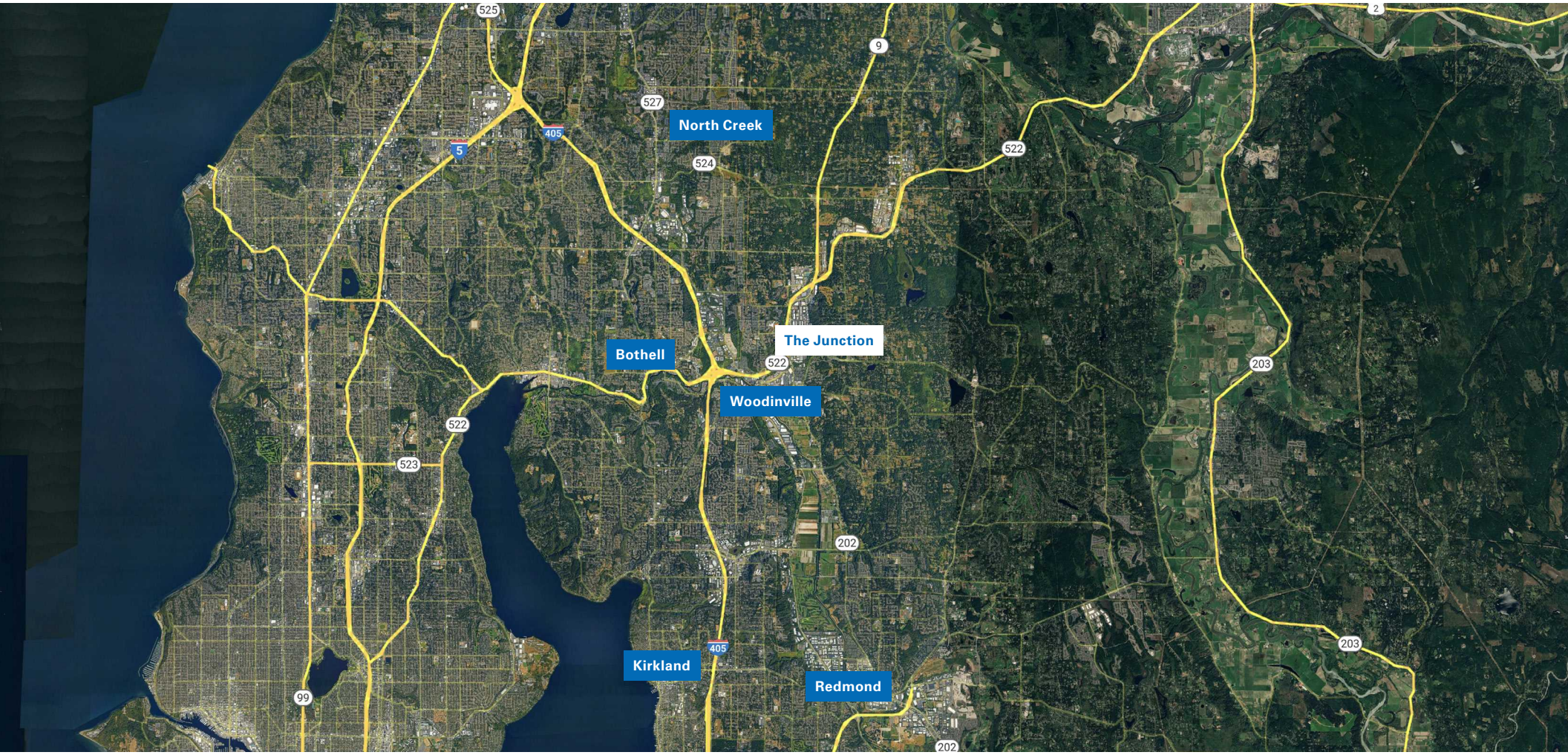
1,300 SF | Available Now



ROLL UP DOOR



Location Map



The Neighborhood

Woodinville is a picturesque area nestled in the verdant landscapes of Washington State. Located just northeast of Seattle, this charming town offers a serene and welcoming ambiance that attracts visitors and residents alike. Woodinville is renowned for its thriving wine industry, boasting over 130 wineries and tasting rooms that produce a diverse array of award-winning wines. Beyond the vineyards, Woodinville offers a delightful blend of natural beauty and recreational opportunities. Its proximity to the stunning Cascade Mountains allows for breathtaking hikes and outdoor adventures. Additionally, the town hosts vibrant farmers markets, art galleries, and boutique shops, contributing to its vibrant cultural scene. Whether indulging in the finest wines or immersing oneself in the beauty of nature, Woodinville captivates visitors with its charm and allure.





NEWMARK

Joe Lynch
Executive Managing Director
t 425-362-1399
joe.lynch@nmrk.com

Dan Harden
Senior Managing Director
t 425-362-1393
dan.harden@nmrk.com

Brendan Soelling
Associate Director
t 425-362-1389
brendan.soelling@nmrk.com

The distributor of this communication is performing acts for which a real estate license is required. The information contained herein has been obtained from sources deemed reliable but has not been verified and no guarantee, warranty or representation, either express or implied, is made with respect to such information. Terms of sale or lease and availability are subject to change or withdrawal without notice. 18-1023