

# SOUTH KENYON STREET INDUSTRIAL SITE

823 - 827 S KENYON ST | SEATTLE, WA

## OWNER/USER SITE FOR SALE OR LEASE

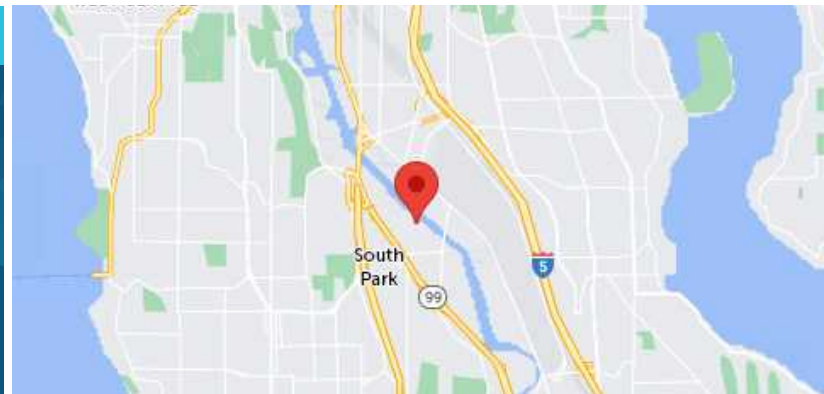


### SALE & LEASE INFORMATION

Land Size	Building Size	Divisible	Parcels	Year Built	Lease Rate	Sale Price
15,000 SF	1,010 SF	No	2	1919	Call Broker	\$1,500,000

### PROPERTY HIGHLIGHTS

- Rare contractor yard opportunity in South Park
- Industrial zoning IG2-U65
- Small building with adjacent yard



**KERMIT JORGENSEN**  
206.787.1475  
kjorgensen@neilwalter.com

**JOHN BLEDSOE**  
206.787.1460  
jbledsoe@neilwalter.com

**SPENCER MEAD**  
206.787.1476  
smead@neilwalter.com

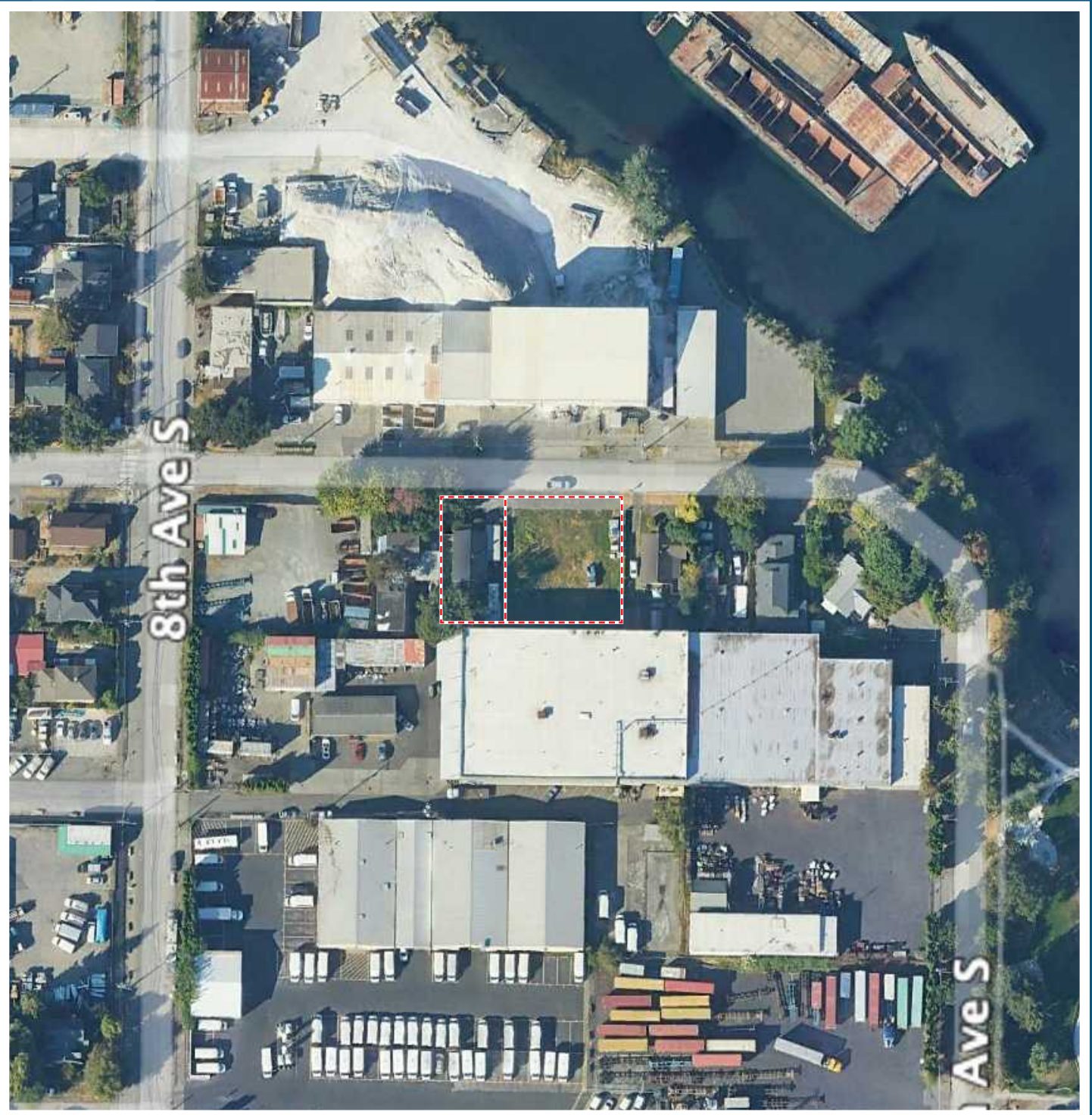
All information references in this document are approximate. The information contained herein is contained from sources deemed reliable. It is provided without representation, warranty, or guarantee, expressed or implied as to accuracy. Prospective buyer or tenant should conduct its own independent investigation relating to the property, government codes and regulations, allowed uses, and all other matters, regardless of whether they are referred to or contained in this document.

# SOUTH KENYON STREET INDUSTRIAL SITE

823 - 827 S KENYON ST | SEATTLE, WA



NEIL WALTER  
COMPANY



**KERMIT JORGENSEN**  
206.787.1475  
kjorgensen@neilwalter.com

**JOHN BLEDSOE**  
206.787.1460  
jbledsoe@neilwalter.com

**SPENCER MEAD**  
206.787.1476  
smead@neilwalter.com

550 S Michigan St  
Seattle, WA 98108  
206.787.1800  
www.neilwalter.com

All information references in this document are approximate. The information contained herein is contained from sources deemed reliable. It is provided without representation, warranty, or guarantee, expressed or implied as to accuracy. Prospective buyer or tenant should conduct its own independent investigation relating to the property, government codes and regulations, allowed uses, and all other matters, regardless of whether they are referred to or contained in this document.