

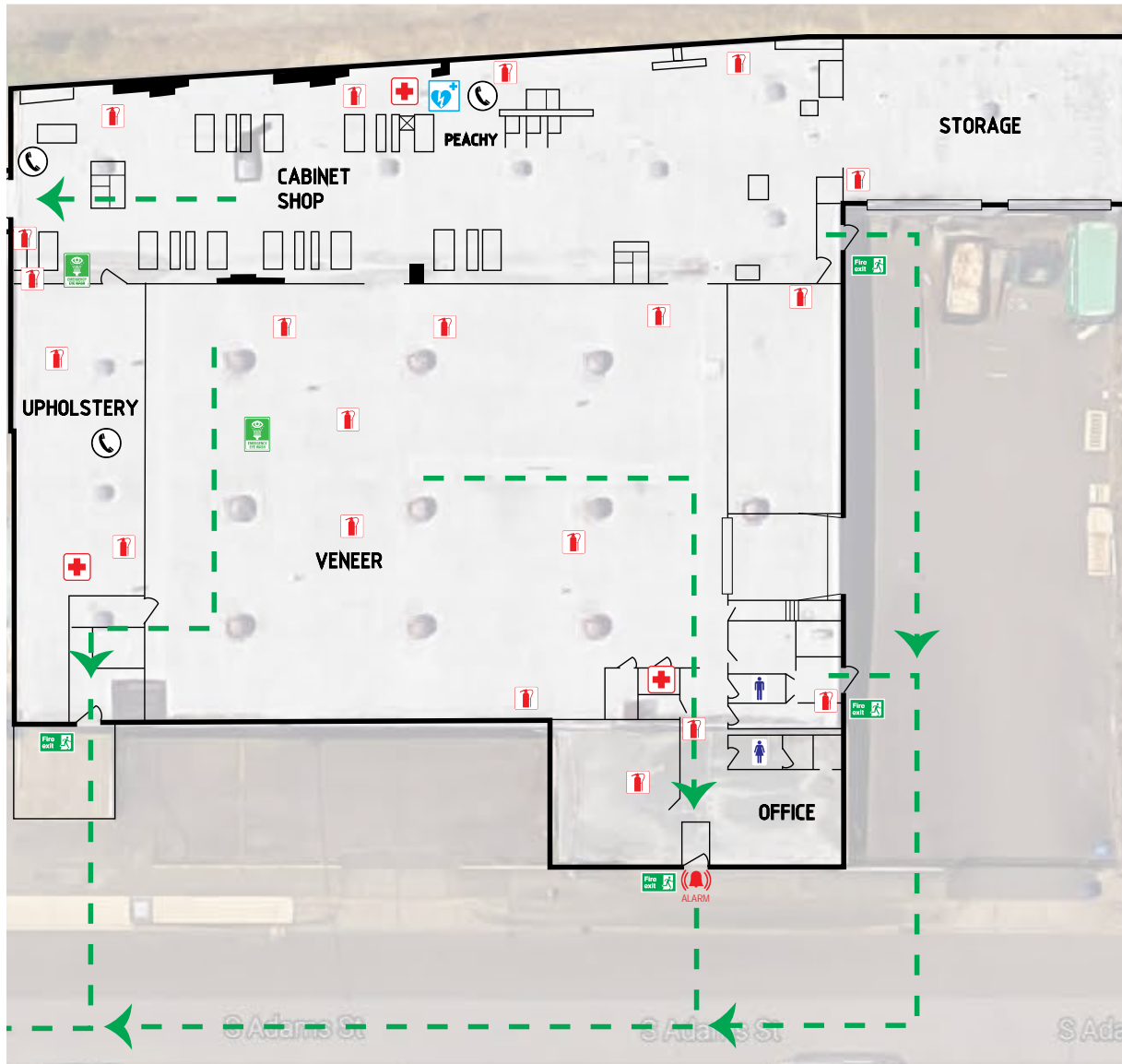
FOR SUBLEASE

±26,068 SF INDUSTRIAL BUILDING

4520 S ADAMS ST, TACOMA, WA

KIDDER.COM

 Kidder
Mathews



PROPERTY FEATURES

- 18 months remaining
- 26,068 SF building (per assessor)
- Office area \pm 1,275 SF
- 2 dock high doors & 2 "pony" docks
- 2 grade level doors
- Fenced/secured yard
- Heavy power | 800 amps, 3 phase, 480
- Zoned Heavy Industrial (M2)
- Sprinkler system
- Asking \$0.80/SF, NNN

BRANDON GATES
253.722.1429
brandon.gates@kidder.com





KIDDER.COM

This information supplied herein is from sources we deem reliable. It is provided without any representation, warranty, or guarantee, expressed or implied as to its accuracy. Prospective Buyer or Tenant should conduct an independent investigation and verification of all matters deemed to be material, including, but not limited to, statements of income and expenses. Consult your attorney, accountant, or other professional advisor.

