



Longacres

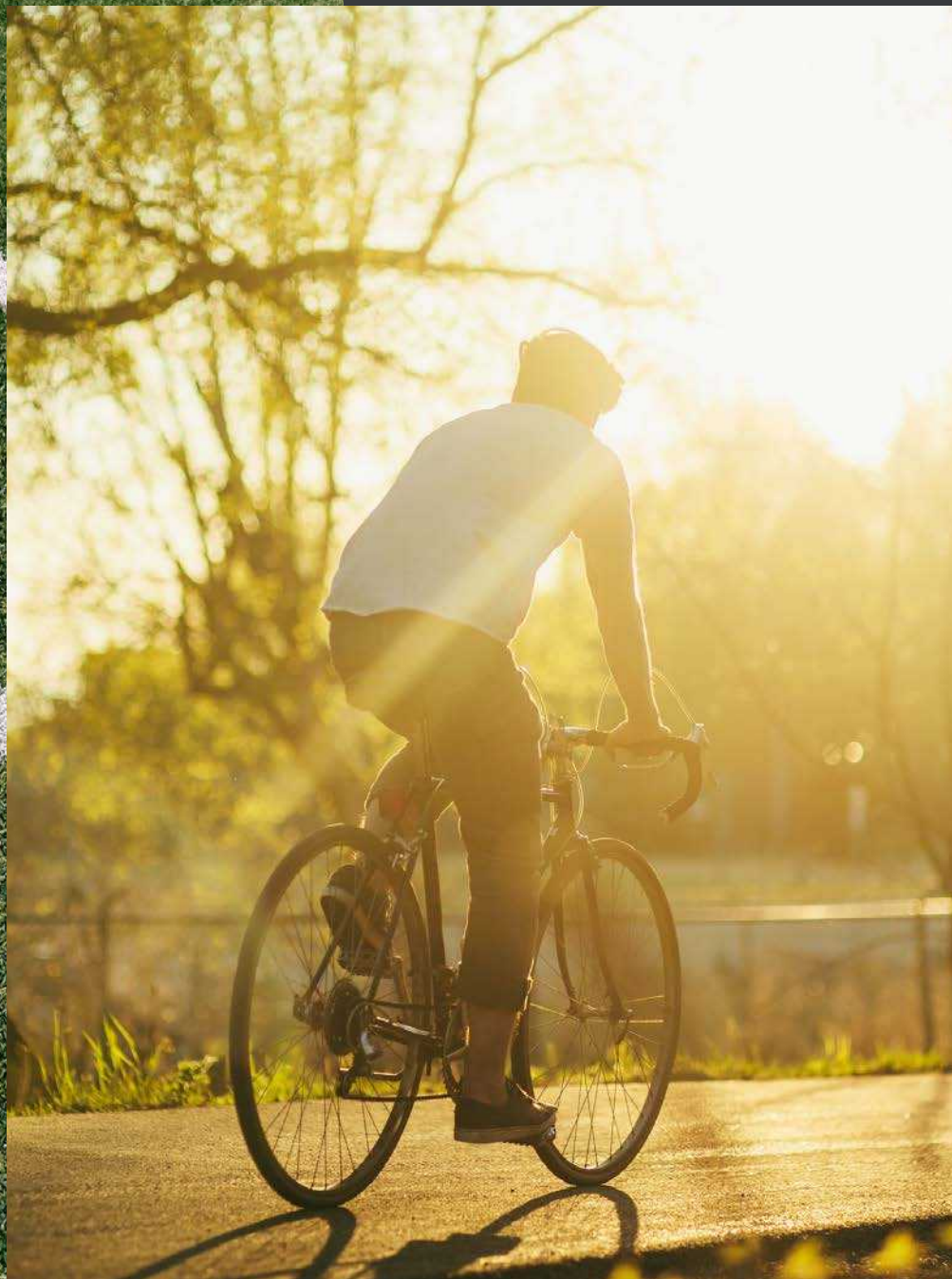
1901 OAKESDALE AVE SW RENTON, WA 98057



BE PART OF RENTON'S NEXT CHAPTER

Renton's visionary new district.

With a prime location in Renton's thriving new commercial district, Longacres is the perfect place to grow your business, lay down roots, connect with nature or gather with friends.



Overview

Longacres is a transit-connected destination within Renton—an innovative and creative space for energetic professionals and sports enthusiasts alike.

On-site Amenities



DAYCARE



CONFERENCE ROOM



GOURMONDO'S GRAB & GO CAFÉ



FITNESS CENTER



DEDICATED BIKE ACCESS WITH SECURED OUTDOOR STORAGE

Site Plan



Building Highlights

Anchored by the Seattle Sounders FC's new club headquarters, Longacres offers direct access to the Tukwila Station via a network of walking and bike trails and is conveniently located at the intersection of I-5 and I-405.

Boasting expansive floor plates and views of Mount Rainier, the district's natural landscape, and the Sounders four training fields, the first step to growing your business starts here.



BUILDING SIZE
±332,798 SF
on 5 floors



PARKING RATIO
3.5/1,000



TYPICAL FLOOR PLATE
±71,000



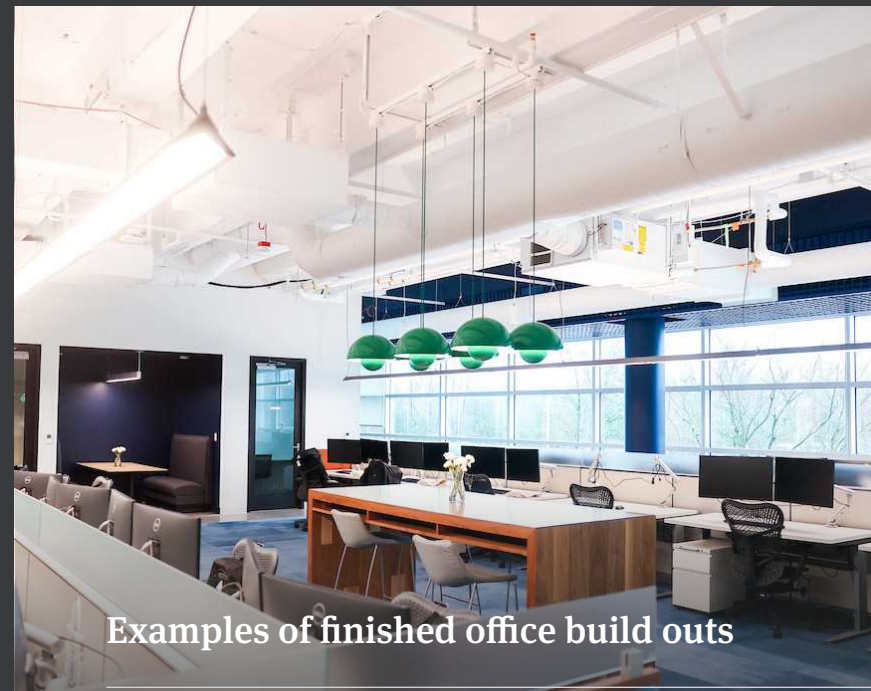
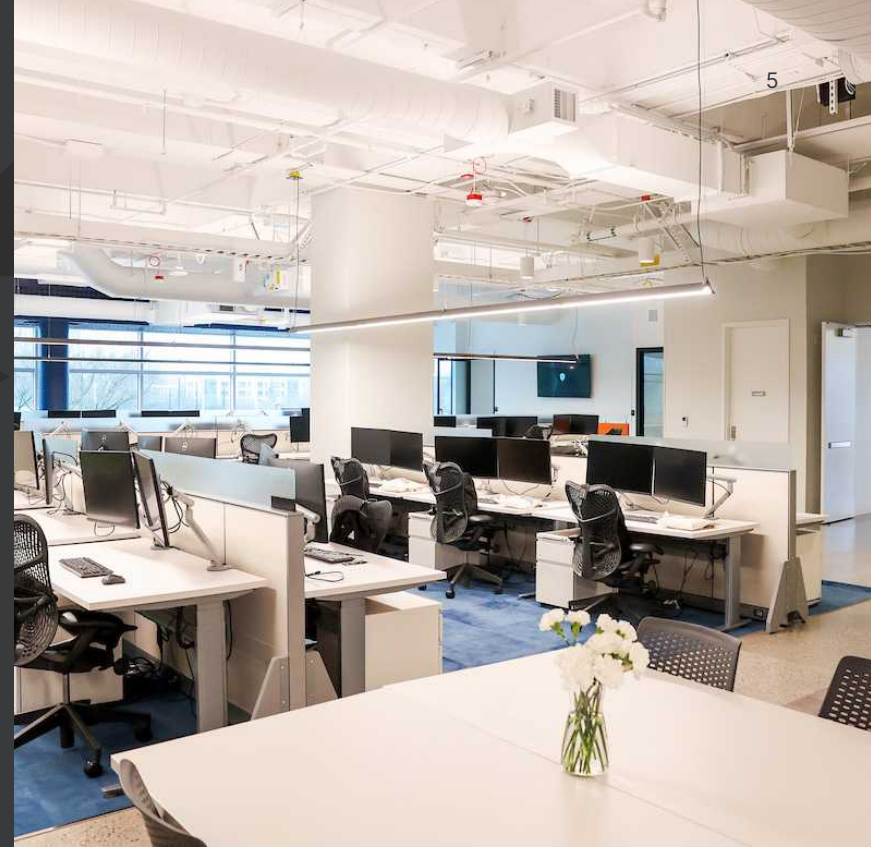
FLOOR TO FLOOR HEIGHT
14' 9"



CONSTRUCTION TIMELINE
Ready for TI's



PROPERTY MANAGEMENT
On-site



Examples of finished office build outs



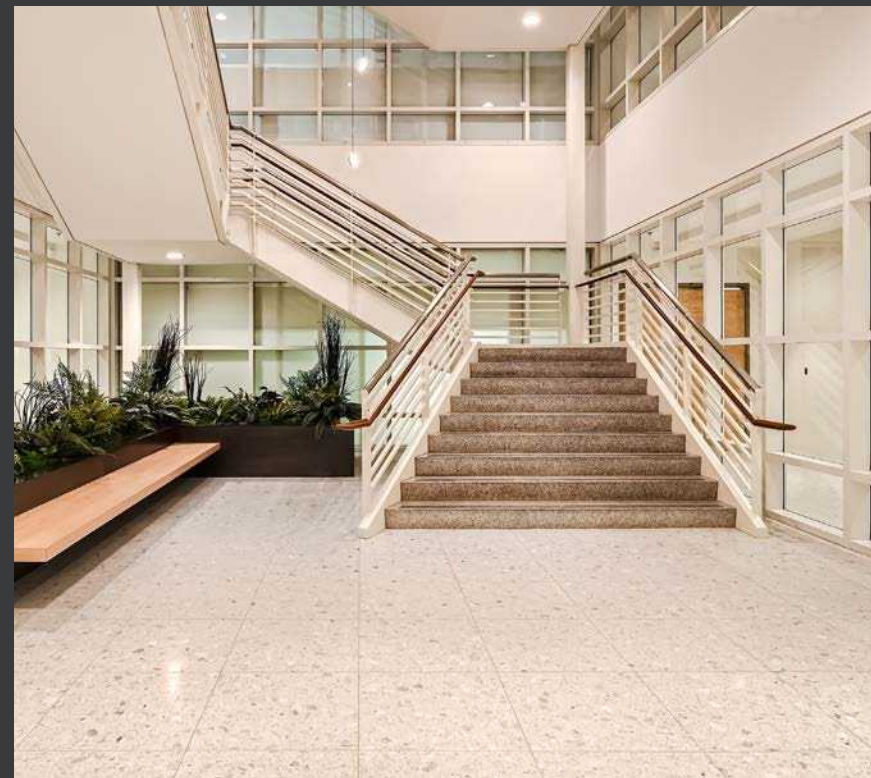
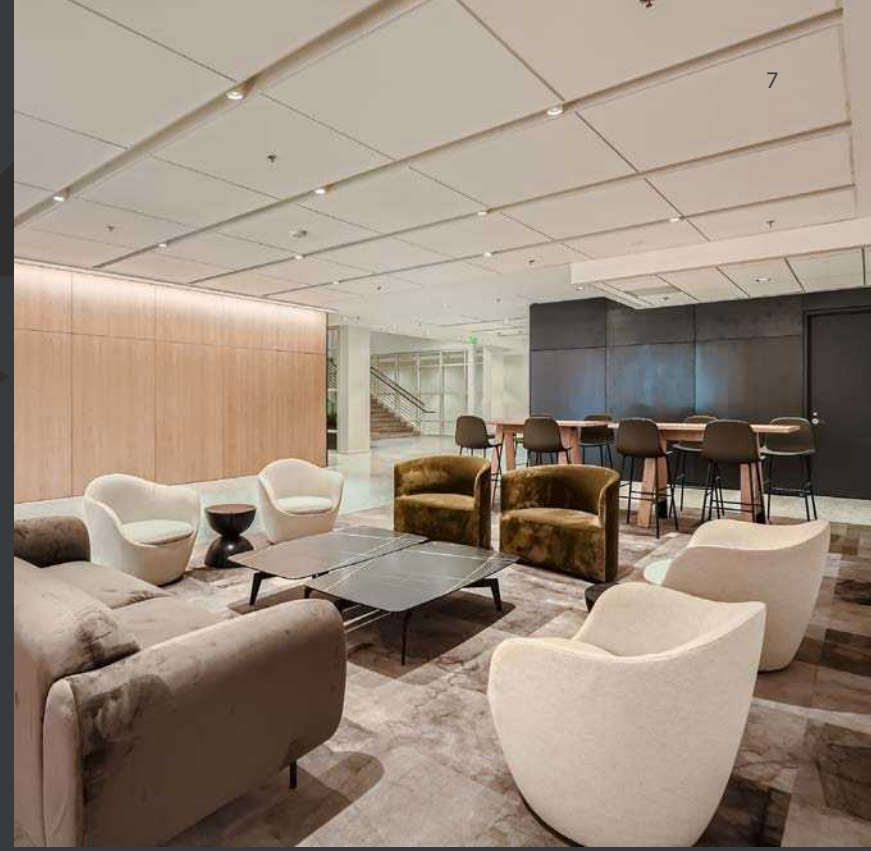
Southeast View of Longacres

Availability

Suite	RSF
SUITE 250	15,346*
SUITE 275	20,032*
SUITE 300	71,032
SUITE 400	71,033
SUITE 500	67,747**
Total	245,190

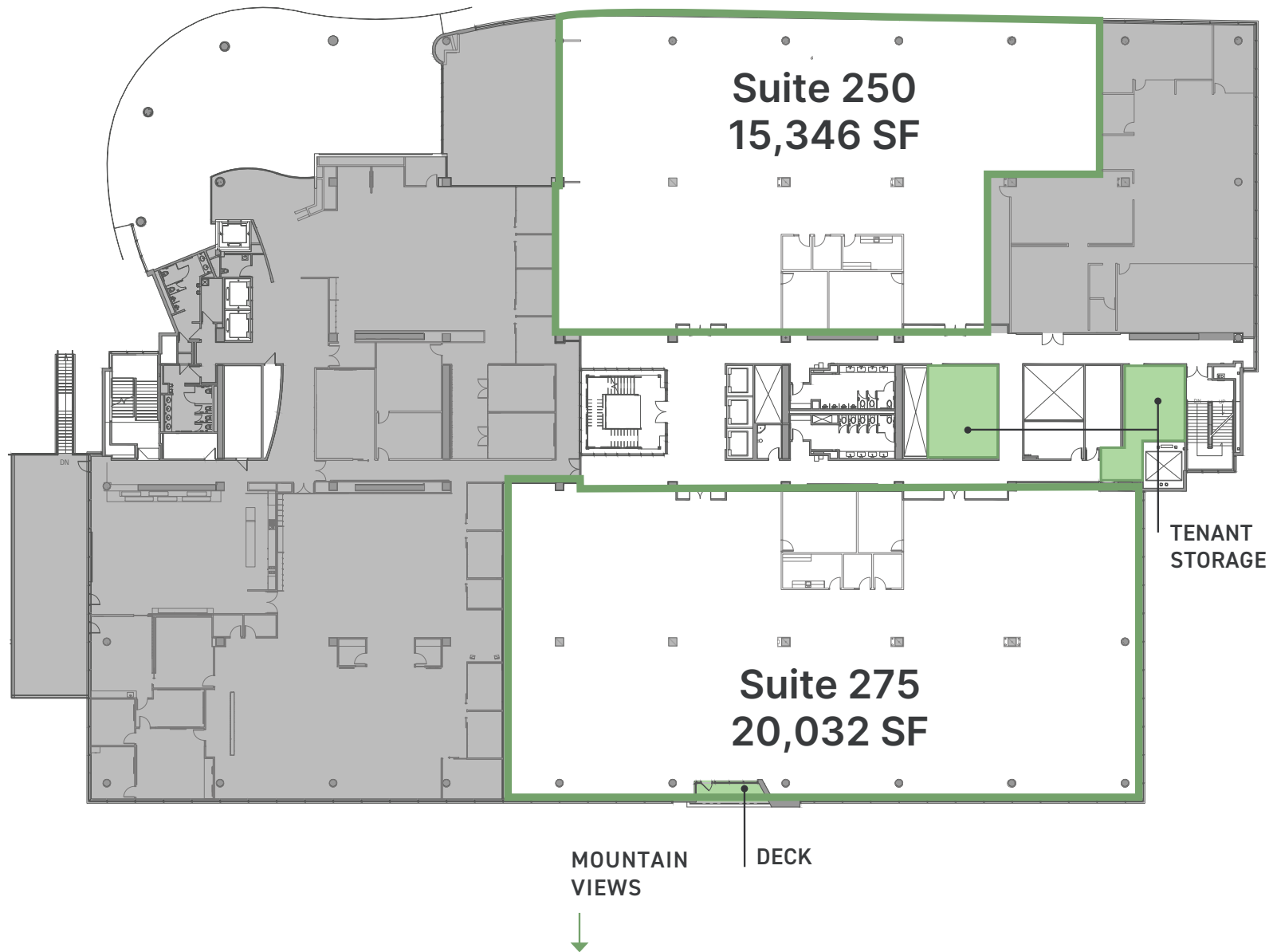
* Divisible to approximately 5,000 RSF

** Deck overlooking pond, trails, and soccer fields

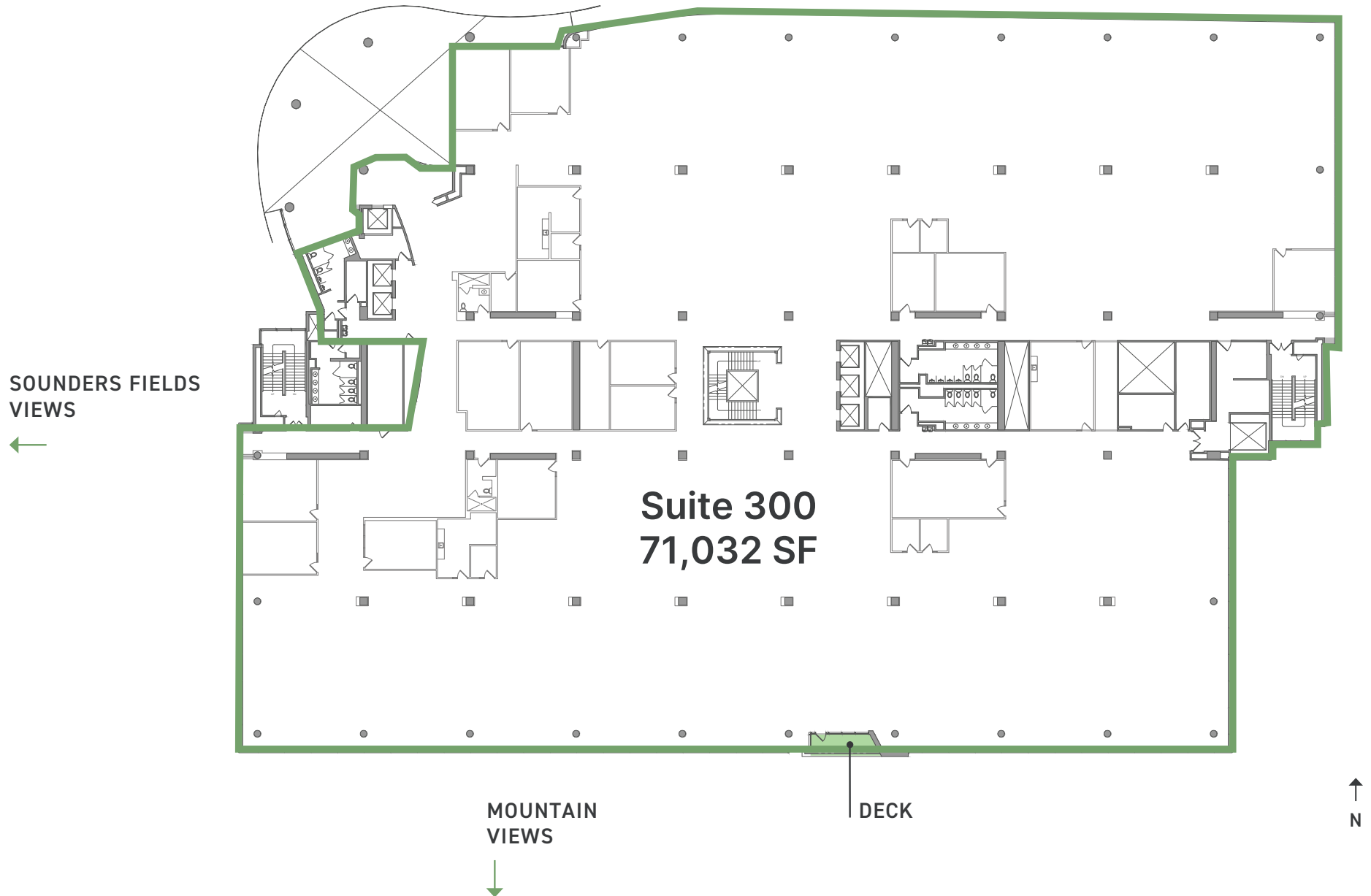


Floor 2

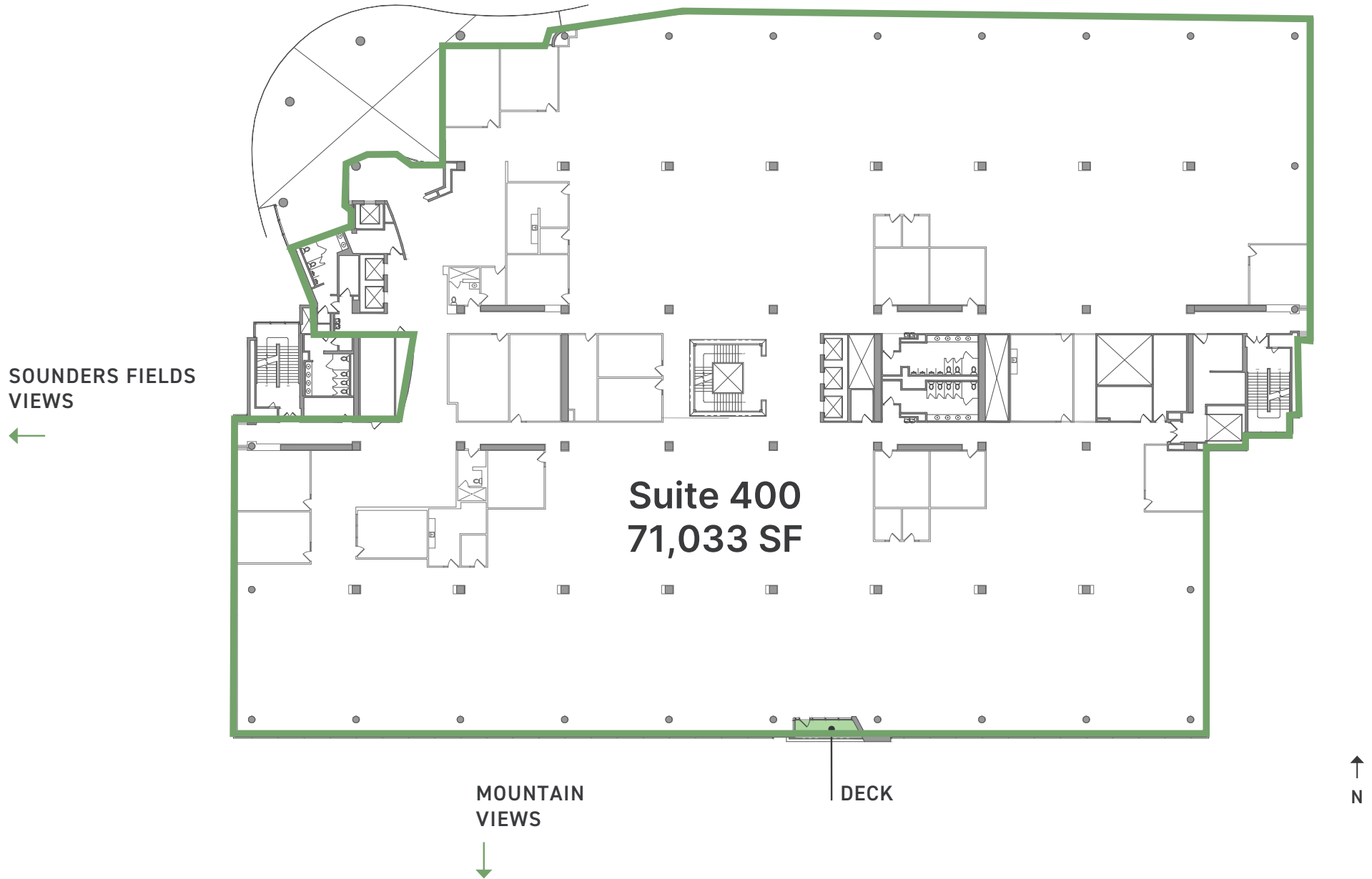
Suite 250 and 275 are divisible to 5K SF



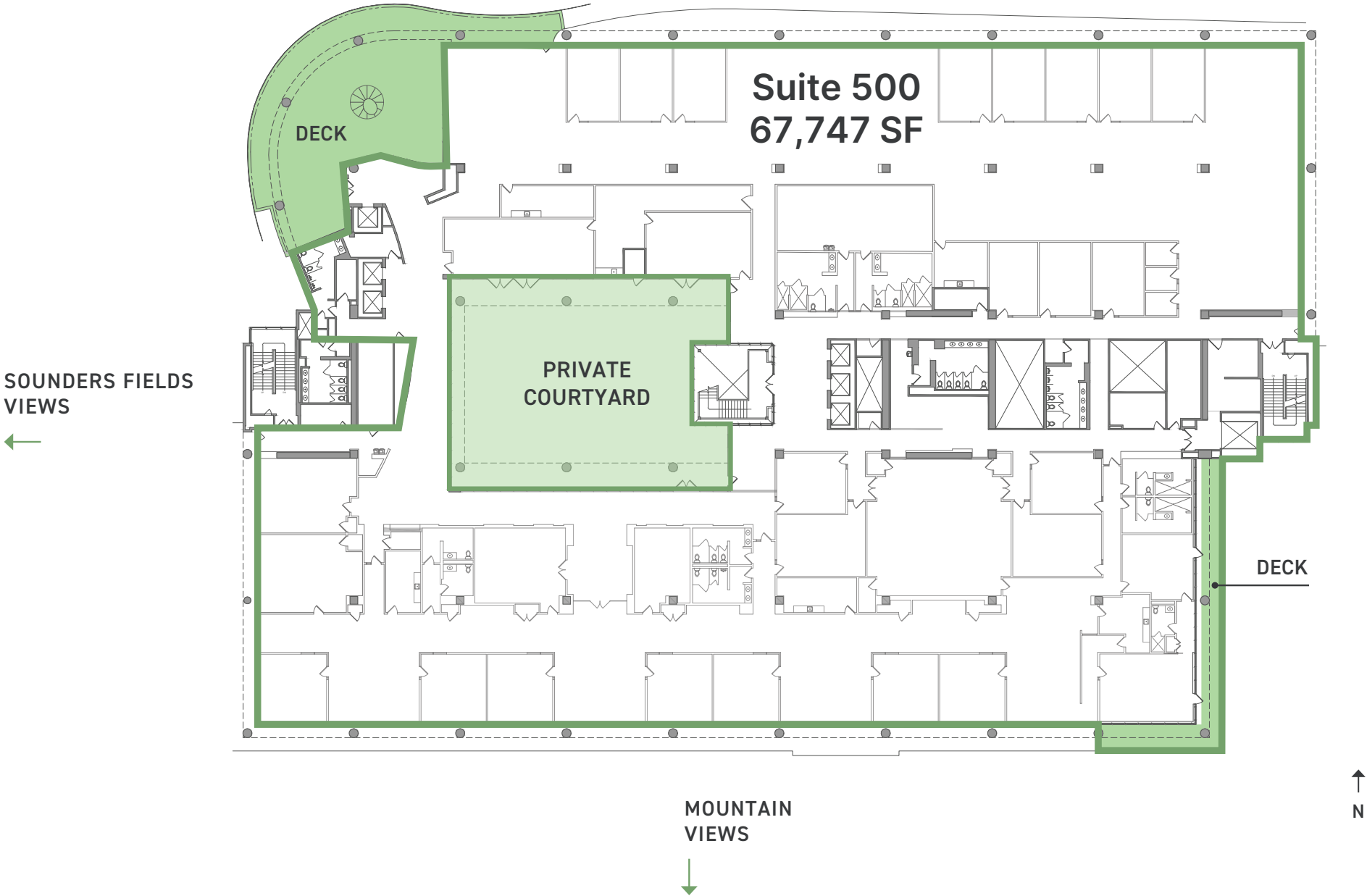
Floor 3



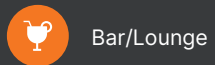
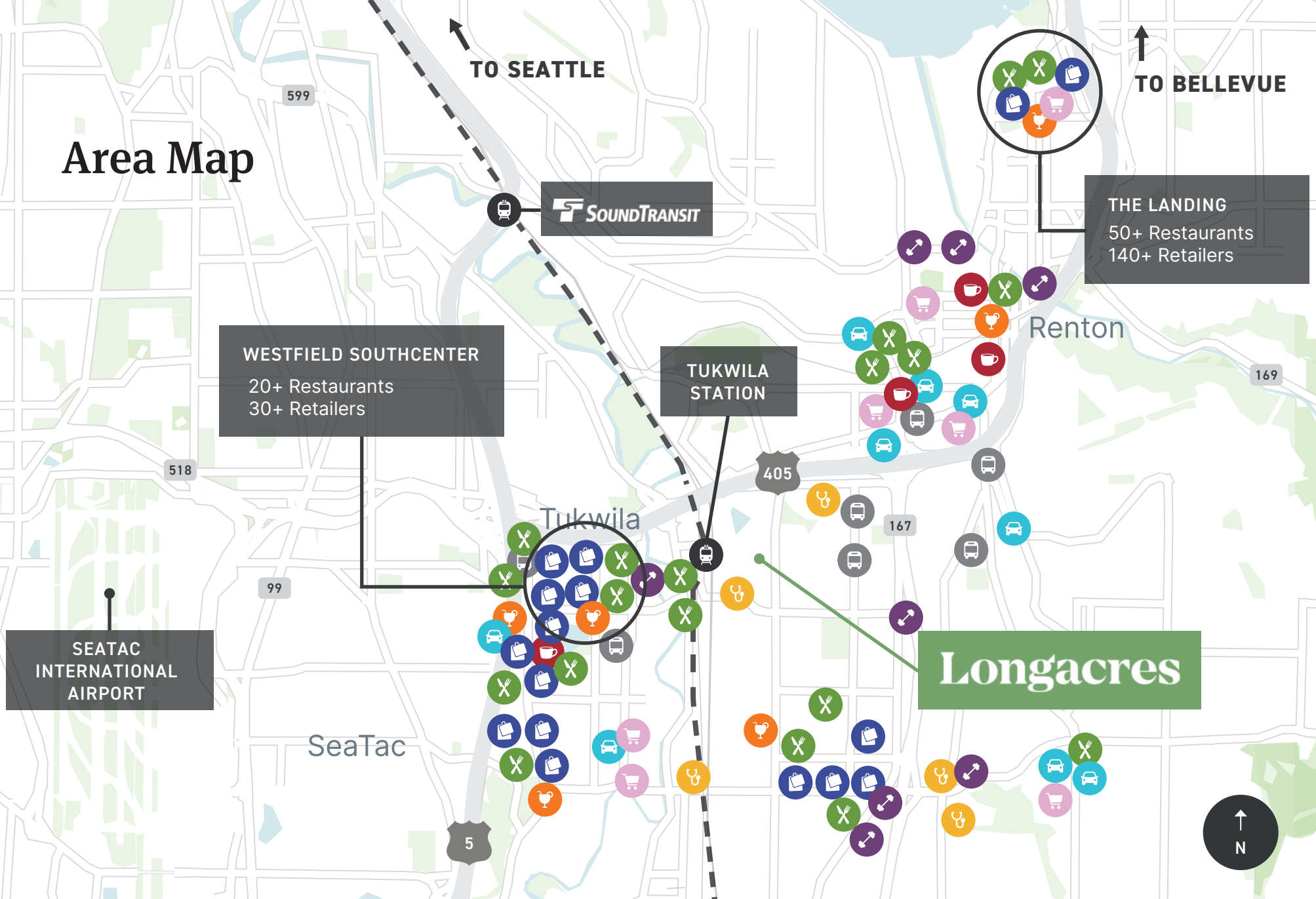
Floor 4



Floor 5



Area Map



Bar/Lounge



Pharmacy/Clinic



Retail



Gas Station



Transportation



Coffee



Restaurant



Gym/Fitness



Grocery Store





Photo Credit: SounderBruce Flickr



Transportation

Connecting cities along the I-5 corridor, the Tukwila Station provides daily access to Longacres all the way from Vancouver, B.C. to Portland, OR with 13 trains running north and southbound to Seattle and Tacoma daily.

Drive Times

Westfield Southcenter	5 MIN
SeaTac International Airport	9 MIN
Bellevue CBD	19 MIN
Seattle CBD	21 MIN

Walk Times

Sounder/Amtrak Station	5 MIN
Tukwila Station P & R	5 MIN
Renton Transit Center (KC Metro F Line and 153 Stop)	8 MIN

Longacres

Mike George

425.586.5618

mgeorge@nai-psp.com

Tony Rona

425.586.5634

trona@nai-psp.com

NAI Puget Sound Properties

10900 NE 8th St, Suite 1500

Bellevue, WA 98004

BELLEVUE | TACOMA

LONGACRESRENTON.COM



THE INFORMATION CONTAINED HEREIN HAS BEEN GIVEN TO US BY THE OWNER OF THE PROPERTY OR OTHER SOURCES WE DEEM RELIABLE, WE HAVE NO REASON TO DOUBT ITS ACCURACY, BUT WE DO NOT GUARANTEE IT. ALL INFORMATION SHOULD BE VERIFIED PRIOR TO PURCHASE OR LEASE.

